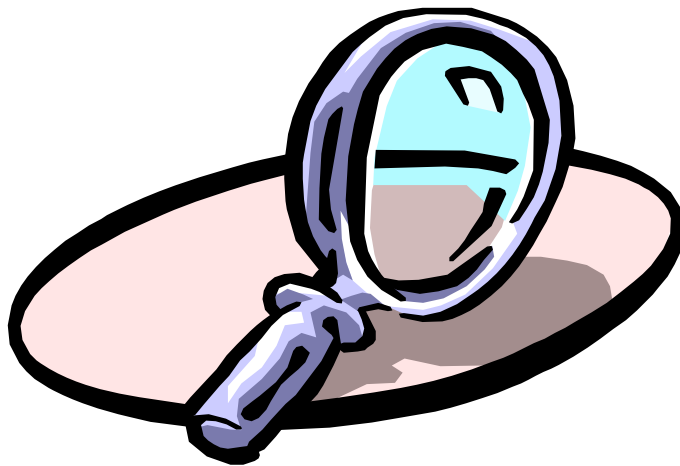


# Delgado

COMMUNITY COLLEGE

## Final Enrollment Report

Fall 2007



Published on March 31, 2008

By The Office of Institutional Research

## **Table of Contents**

## **Page no.**

Summary	
Enrollment by Gender	1
Enrollment by Ethnicity	2
Enrollment by Age	4
Enrollment by Admission Status	6
Enrollment by Classification	8
Full-time/Part-time Status, Headcount, FTE, SCH	9
Enrollment by Award Sought	11
Enrollment by Division	12
Enrollment by Online Status	13
Enrollment by Program, Full-time Status	14
Enrollment by Program, Part-time Status	15
Enrollment by Program	17
Enrollment by Program Ranked by Student Total	23
Enrollment by Parish	25
Top 50 "Feeder" High Schools of First Time Freshmen	27
Enrollment by Zip Code	28

## SUMMARY

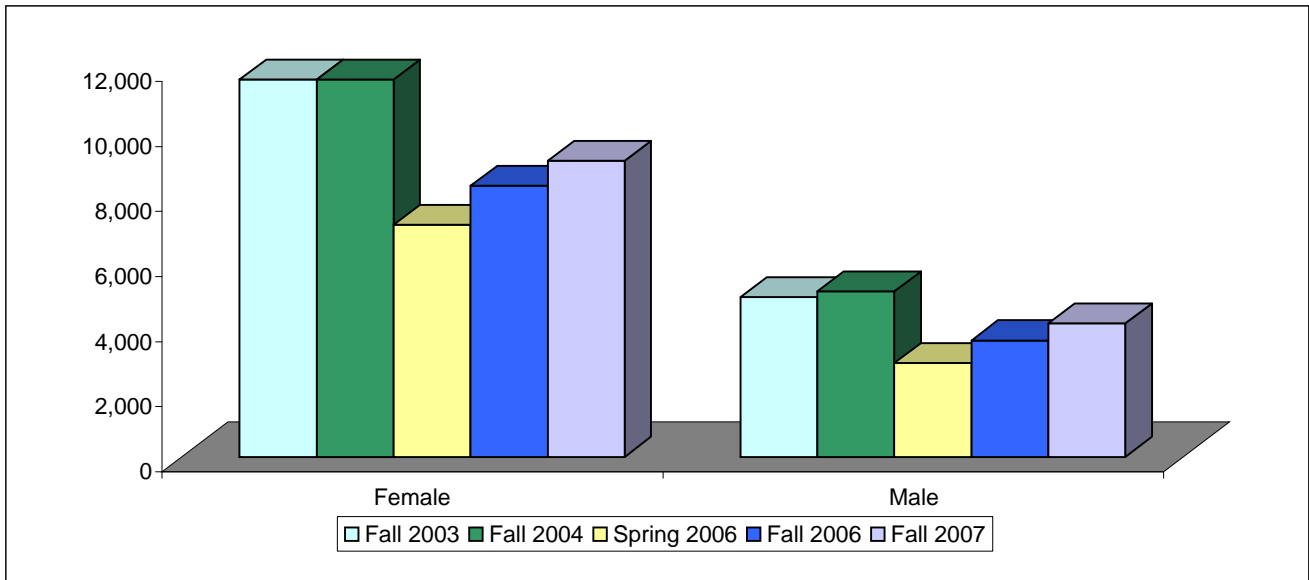
- ✓ Post-Katrina enrollment increased 10.9% from Fall 2006 (11,916) to Fall 2006 (13,211).
- ✓ Male students increased by 14.6% from Fall 2006; female students increased by 9.3%.  
Our female student enrollment continues to make up 70% of the total.
- ✓ African American enrollment increased by 14.2% from Fall 2006. Asian/Pacific Islander enrollment increased by 12.9%. Caucasian enrollment increased by 6.0%.  
African Americans now make up 37.1% of our enrollment, up from fall 2006 (36%), but still less than the pre-Katrina percentage of 42%.
- ✓ City Park Campus had the largest increase from Fall 2006 with 13.4% gain in enrollment. Northshore site increased by 12.1% over Fall 2006.
- ✓ Enrollment at the West Bank campus increased 8.0%, Charity campus decreased by -2.8%.
- ✓ Transfer students increases by 21.4% from Fall 2006; First-time freshman increased 19.7% from Fall 2006. Continuing students increased by 11.8%.
- ✓ Pre-Nursing and General Studies had the largest increases in enrollment since Fall 2006.
- ✓ Business Administration, General Science, Surgical Technology, Performace & Media Arts, Respiratory Care, Management, Culinary Arts, Computer Aided Drafting had significant increases in program enrollment from the Fall 2006 semester.
- ✓ Care & Development of Young Children, and Health Information Technology had significant decreases in program enrollment from the Fall 2006.

### Fall Enrollment History 2003-2007 by Gender

College Wide Gender	Fall 2003	Fall 2004	Spring 2006	Fall 2006	Fall 2007
Female	11,591	11,591	7,126	8,334	9,106
Male	4,909	5,078	2,875	3,582	4,105
<b>Total</b>	<b>16,500</b>	<b>16,669</b>	<b>10,001</b>	<b>11,916</b>	<b>13,211</b>
<b>Percentages</b>					
Female	70.2%	69.5%	71.3%	69.9%	68.9%
Male	29.8%	30.5%	28.7%	30.1%	31.1%

Number Change 2003 to 2007	% Change 2003 to 2007
-2,485	-21.4%
-804	-16.4%
<b>-3,289</b>	<b>-19.9%</b>

Number Change 2006 to 2007	% Change 2006 to 2007
772	9.3%
523	14.6%
<b>1,295</b>	<b>10.9%</b>



City Park Campus Gender	Fall 2003	Fall 2004	Spring 2006	Fall 2006	Fall 2007
Female	7,754	7,580	3,996	4,592	5,173
Male	3,801	3,806	1,930	2,486	2,852
<b>Total</b>	<b>11,555</b>	<b>11,386</b>	<b>5,926</b>	<b>7,078</b>	<b>8,025</b>
<b>West Bank Campus</b>					
Female	2,265	2,201	1,779	1,995	2,130
Male	721	744	590	637	712
<b>Total</b>	<b>2,986</b>	<b>2,945</b>	<b>2,369</b>	<b>2,632</b>	<b>2,842</b>
<b>Charity School of Nursing</b>					
Female	647	754	566	766	758
Male	75	106	92	102	86
<b>Total</b>	<b>722</b>	<b>860</b>	<b>658</b>	<b>868</b>	<b>844</b>
<b>Northshore Site</b>					
Female	925	1,056	785	981	1,045
Male	312	422	263	357	455
<b>Total</b>	<b>1,237</b>	<b>1,478</b>	<b>1,048</b>	<b>1,338</b>	<b>1,500</b>

Number Change 2003 to 2007	% Change 2003 to 2007
-2,581	-33.3%
-949	-25.0%
<b>-3,530</b>	<b>-30.5%</b>

Number Change 2006 to 2007	% Change 2006 to 2007
581	12.7%
366	14.7%
<b>947</b>	<b>13.4%</b>

Number Change 2003 to 2007	% Change 2003 to 2007
-135	-6.0%
-9	-1.2%
<b>-144</b>	<b>-4.8%</b>

Number Change 2006 to 2007	% Change 2006 to 2007
135	6.8%
75	11.8%
<b>210</b>	<b>8.0%</b>

Number Change 2003 to 2007	% Change 2003 to 2007
111	17.2%
11	14.7%
<b>122</b>	<b>16.9%</b>

Number Change 2006 to 2007	% Change 2006 to 2007
-8	-1.0%
-16	-15.7%
<b>-24</b>	<b>-2.8%</b>

Number Change 2003 to 2007	% Change 2003 to 2007
120	13.0%
143	45.8%
<b>263</b>	<b>21.3%</b>

Number Change 2006 to 2007	% Change 2006 to 2007
64	6.5%
98	27.5%
<b>162</b>	<b>12.1%</b>

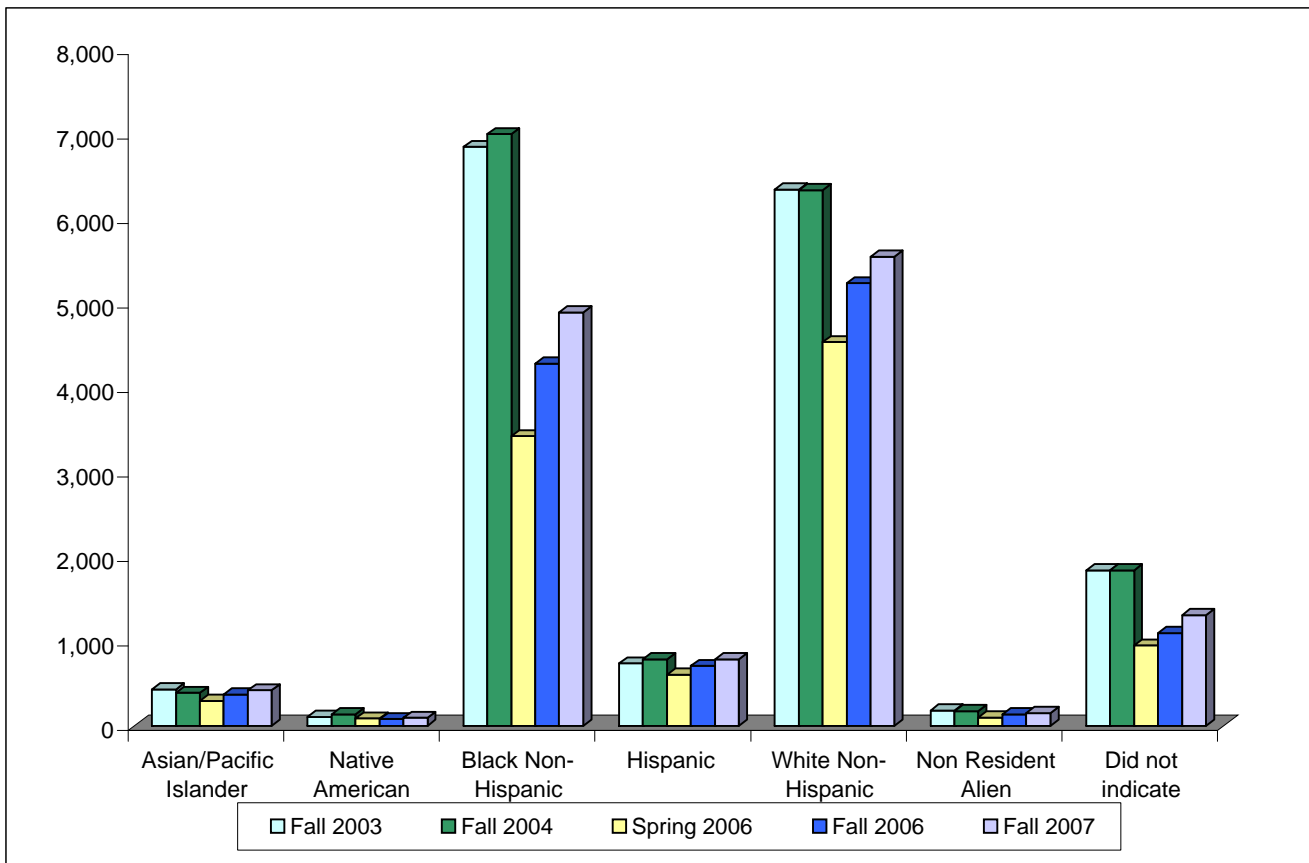
### Fall Enrollment History 2003-2007 by Ethnicity

College Wide Ethnicity	Fall 2003	Fall 2004	Spring 2006	Fall 2006	Fall 2007
Asian/Pacific Islander	432	389	293	372	420
Native American	106	136	87	78	93
Black Non-Hispanic	6,853	7,004	3,427	4,286	4,896
Hispanic	737	785	605	707	788
White Non-Hispanic	6,351	6,339	4,542	5,239	5,552
Non Resident Alien	179	175	97	134	150
Did not indicate	1,842	1,841	950	1,100	1,312
<b>Total</b>	<b>16,500</b>	<b>16,669</b>	<b>10,001</b>	<b>11,916</b>	<b>13,211</b>

Number Change 2003 to 2007	% Change 2003 to 2007
-12	-2.8%
-13	-12.3%
-1,957	-28.6%
51	6.9%
-799	-12.6%
-29	0.0%
-530	-28.8%
<b>-3,289</b>	<b>-19.9%</b>

Number Change 2006 to 2007	% Change 2006 to 2007
48	12.9%
15	19.2%
610	14.2%
81	11.5%
313	6.0%
16	11.9%
212	19.3%
<b>1,295</b>	<b>10.9%</b>

Percentages					
Asian/Pacific Islander	3%	2%	3%	3%	3.2%
Native American	1%	1%	1%	1%	0.7%
Black Non-Hispanic	42%	42%	34%	36%	37.1%
Hispanic	4%	5%	6%	6%	6.0%
White Non-Hispanic	38%	38%	45%	44%	42.0%
Non Resident Alien	1%	1%	1%	1%	1.1%
Did not indicate	11%	11%	9%	9%	9.9%



## Fall Enrollment History 2003-2007 Ethnicity by Campus

City Park Campus						Number Change	% Change	Number Change	% Change
	Fall 2003	Fall 2004	Spring 2006	Fall 2006	Fall 2007	2003 to 2007	2003 to 2007	2006 to 2007	2006 to 2007
Asian/Pacific Islander	344	293	181	225	278	-66	-19.2%	53	23.6%
Native American	50	74	45	41	56	6	12.0%	15	36.6%
Black Non-Hispanic	5,149	5,133	1,935	2484	2909	-2,240	-43.5%	425	17.1%
Hispanic	556	568	413	496	575	19	3.4%	79	15.9%
White Non-Hispanic	4,222	3,965	2,660	3020	3272	-950	-22.5%	252	8.3%
Non Resident Alien	172	167	94	126	138	-34	0.0%	12	9.5%
Did not indicate	1,062	1,186	598	686	797	-265	-25.0%	111	16.2%
<b>Total</b>	<b>11,555</b>	<b>11,386</b>	<b>5,926</b>	<b>7,078</b>	<b>8,025</b>	<b>-3,530</b>	<b>-30.5%</b>	<b>947</b>	<b>13.4%</b>

West Bank Campus									
	Fall 2003	Fall 2004	Spring 2006	Fall 2006	Fall 2007				
Asian/Pacific Islander	69	75	95	130	123	54	78.3%	-7	-5.4%
Native American	36	38	28	21	18	-18	-50.0%	-3	-14.3%
Black Non-Hispanic	1,374	1,407	1,100	1265	1387	13	0.9%	122	9.6%
Hispanic	122	142	126	125	120	-2	-1.6%	-5	-4.0%
White Non-Hispanic	945	934	797	857	860	-85	-9.0%	3	0.4%
Non Resident Alien	3	4	3	4	5	2	0.0%	1	25.0%
Did not indicate	437	345	220	230	329	-108	-24.7%	99	43.0%
<b>Total</b>	<b>2,986</b>	<b>2,945</b>	<b>2,369</b>	<b>2,632</b>	<b>2,842</b>	<b>-144</b>	<b>-4.8%</b>	<b>210</b>	<b>8.0%</b>

Charity School of Nursing									
	Fall 2003	Fall 2004	Spring 2006	Fall 2006	Fall 2007				
Asian/Pacific Islander	14	15	12	9	7	-7	-50.0%	-2	-22.2%
Native American	9	8	6	6	7	-2	-22.2%	1	16.7%
Black Non-Hispanic	175	233	171	254	263	88	50.3%	9	3.5%
Hispanic	29	37	38	43	38	9	31.0%	-5	-11.6%
White Non-Hispanic	397	457	374	477	440	43	10.8%	-37	-7.8%
Non Resident Alien	3	4	0	2	5	2	0.0%	3	0.0%
Did not indicate	95	106	57	77	84	-11	-11.6%	7	9.1%
<b>Total</b>	<b>722</b>	<b>860</b>	<b>658</b>	<b>868</b>	<b>844</b>	<b>122</b>	<b>16.9%</b>	<b>-24</b>	<b>-2.8%</b>

Northshore Site									
	Fall 2003	Fall 2004	Spring 2006	Fall 2006	Fall 2007				
Asian/Pacific Islander	5	6	5	8	12	7	140.0%	4	50.0%
Native American	11	16	8	10	12	1	9.1%	2	20.0%
Black Non-Hispanic	155	231	221	283	337	182	117.4%	54	19.1%
Hispanic	30	38	28	43	55	25	83.3%	12	27.9%
White Non-Hispanic	787	983	711	885	980	193	24.5%	95	10.7%
Non Resident Alien	1	0	0	2	2	1	100.0%	0	0.0%
Did not indicate	248	204	75	107	102	-146	-58.9%	-5	-4.7%
<b>Total</b>	<b>1,237</b>	<b>1,478</b>	<b>1,048</b>	<b>1,338</b>	<b>1,500</b>	<b>263</b>	<b>21.3%</b>	<b>162</b>	<b>12.1%</b>

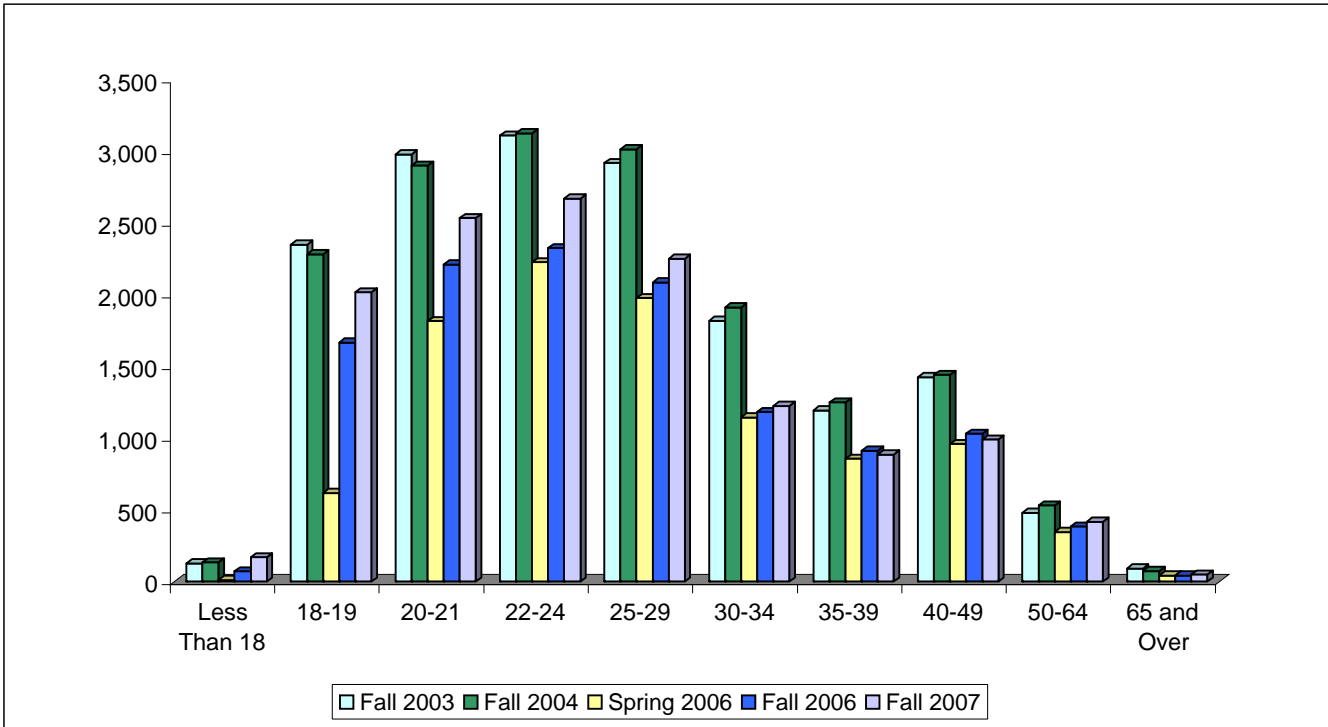
### Fall Enrollment History 2003-2007 by Age

College Wide	Fall 2003	Fall 2004	Spring 2006	Fall 2006	Fall 2007
Less Than 18	126	134	10	70	169
18-19	2,351	2,283	619	1,668	2,018
20-21	2,980	2,903	1,816	2,212	2,535
22-24	3,113	3,127	2,228	2,325	2,672
25-29	2,920	3,015	1,978	2,087	2,252
30-34	1,820	1,912	1,146	1,183	1,225
35-39	1,193	1,250	857	913	886
40-49	1,427	1,442	960	1,032	990
50-64	479	530	345	384	416
65 and Over	91	73	42	42	48
<b>Total</b>	<b>16,500</b>	<b>16,669</b>	<b>10,001</b>	<b>11,916</b>	<b>13,211</b>
<b>Average Age</b>	<b>28</b>	<b>28</b>	<b>28</b>	<b>29</b>	<b>27</b>

Number Change 2003 to 2007	% Change 2003 to 2007
43	34.1%
-333	-14.2%
-445	-14.9%
-441	-14.2%
-668	-22.9%
-595	-32.7%
-307	-25.7%
-437	-30.6%
-63	-13.2%
-43	-47.3%
<b>-3,289</b>	<b>-19.9%</b>

Number Change 2006 to 2007	% Change 2006 to 2007
99	141.4%
350	21.0%
323	14.6%
347	14.9%
165	7.9%
42	3.6%
-27	-3.0%
-42	-4.1%
32	8.3%
6	14.3%
<b>1,295</b>	<b>10.9%</b>

Percentages					
Less Than 18	1%	1%	0%	1%	1%
18-19	14%	14%	6%	14%	15%
20-21	18%	17%	18%	19%	19%
22-24	19%	19%	22%	20%	20%
25-29	18%	18%	20%	18%	17%
30-34	11%	11%	11%	10%	9%
35-39	7%	7%	9%	8%	7%
40-49	9%	9%	10%	9%	7%
50-64	3%	3%	3%	3%	3%
65 and Over	1%	0%	0%	0%	0%



## Fall Enrollment History 2003-2007 by Age by Campus

City Park Campus						Number Change	% Change	Number Change	% Change
	Fall 2003	Fall 2004	Spring 2006	Fall 2006	Fall 2007	2003 to 2007	2003 to 2007	2006 to 2007	2006 to 2007
Less Than 18	71	80	6	46	116	45	63.4%	70	152.2%
18-19	1,653	1,624	309	945	1,173	-480	-29.0%	228	24.1%
20-21	2,193	2,056	1,077	1,369	1,577	-616	-28.1%	208	15.2%
22-24	2,240	2,189	1,409	1,499	1,764	-476	-21.3%	265	17.7%
25-29	2,045	2,061	1,180	1,231	1,360	-685	-33.5%	129	10.5%
30-34	1,211	1,234	684	655	683	-528	-43.6%	28	4.3%
35-39	791	802	481	514	497	-294	-37.2%	-17	-3.3%
40-49	956	924	532	564	584	-372	-38.9%	20	3.5%
50-64	337	367	229	231	247	-90	-26.7%	16	6.9%
65 and Over	58	49	19	24	24	-34	-58.6%	0	0.0%
<b>Total</b>	<b>11,555</b>	<b>11,386</b>	<b>5,926</b>	<b>7,078</b>	<b>8,025</b>	<b>-3,530</b>	<b>-30.5%</b>	<b>947</b>	<b>13.4%</b>

West Bank Campus						Number Change	% Change	Number Change	% Change
	Fall 2003	Fall 2004	Spring 2006	Fall 2006	Fall 2007	2003 to 2007	2003 to 2007	2006 to 2007	2006 to 2007
Less Than 18	42	32	4	16	41	-1	-2.4%	25	156.3%
18-19	490	420	218	458	553	63	12.9%	95	20.7%
20-21	543	533	493	522	563	20	3.7%	41	7.9%
22-24	525	527	485	459	485	-40	-7.6%	26	5.7%
25-29	481	472	416	401	452	-29	-6.0%	51	12.7%
30-34	306	328	224	228	260	-46	-15.0%	32	14.0%
35-39	236	238	184	189	167	-69	-29.2%	-22	-11.6%
40-49	255	275	243	248	201	-54	-21.2%	-47	-19.0%
50-64	83	100	80	93	99	16	19.3%	6	6.5%
65 and Over	25	20	22	18	21	-4	-16.0%	3	16.7%
<b>Total</b>	<b>2,986</b>	<b>2,945</b>	<b>2,369</b>	<b>2,632</b>	<b>2,842</b>	<b>-144</b>	<b>-4.8%</b>	<b>210</b>	<b>8.0%</b>

Charity School of Nursing						Number Change	% Change	Number Change	% Change
	Fall 2003	Fall 2004	Spring 2006	Fall 2006	Fall 2007	2003 to 2007	2003 to 2007	2006 to 2007	2006 to 2007
Less Than 18	0	0	0	0	0	0	0.0%	0	0.0%
18-19	4	3	0	1	0	-4	-100.0%	-1	0.0%
20-21	47	50	7	36	28	-19	-40.4%	-8	-22.2%
22-24	154	175	115	154	184	30	19.5%	30	19.5%
25-29	216	239	193	247	229	13	6.0%	-18	-7.3%
30-34	143	181	138	168	158	15	10.5%	-10	-6.0%
35-39	72	103	106	132	125	53	73.6%	-7	-5.3%
40-49	67	88	83	110	101	34	50.7%	-9	-8.2%
50-64	19	21	16	20	19	0	0.0%	-1	-5.0%
65 and Over	0	0	0	0	0	0	0.0%	0	0.0%
<b>Total</b>	<b>722</b>	<b>860</b>	<b>658</b>	<b>868</b>	<b>844</b>	<b>122</b>	<b>16.9%</b>	<b>-24</b>	<b>-2.8%</b>

Northshore Site						Number Change	% Change	Number Change	% Change
	Fall 2003	Fall 2004	Spring 2006	Fall 2006	Fall 2007	2003 to 2007	2003 to 2007	2006 to 2007	2006 to 2007
Less Than 18	13	22	0	8	12	-1	-7.7%	4	0.0%
18-19	204	236	92	264	292	88	43.1%	28	10.6%
20-21	197	264	239	285	367	170	86.3%	82	28.8%
22-24	194	236	219	213	239	45	23.2%	26	12.2%
25-29	178	243	189	208	211	33	18.5%	3	1.4%
30-34	160	169	100	132	124	-36	-22.5%	-8	-6.1%
35-39	94	107	86	78	97	3	3.2%	19	24.4%
40-49	149	155	102	110	104	-45	-30.2%	-6	-5.5%
50-64	40	42	20	40	51	11	27.5%	11	27.5%
65 and Over	8	4	1	0	3	-5	-62.5%	3	0.0%
<b>Total</b>	<b>1,237</b>	<b>1,478</b>	<b>1,048</b>	<b>1,338</b>	<b>1,500</b>	<b>263</b>	<b>21.3%</b>	<b>162</b>	<b>12.1%</b>



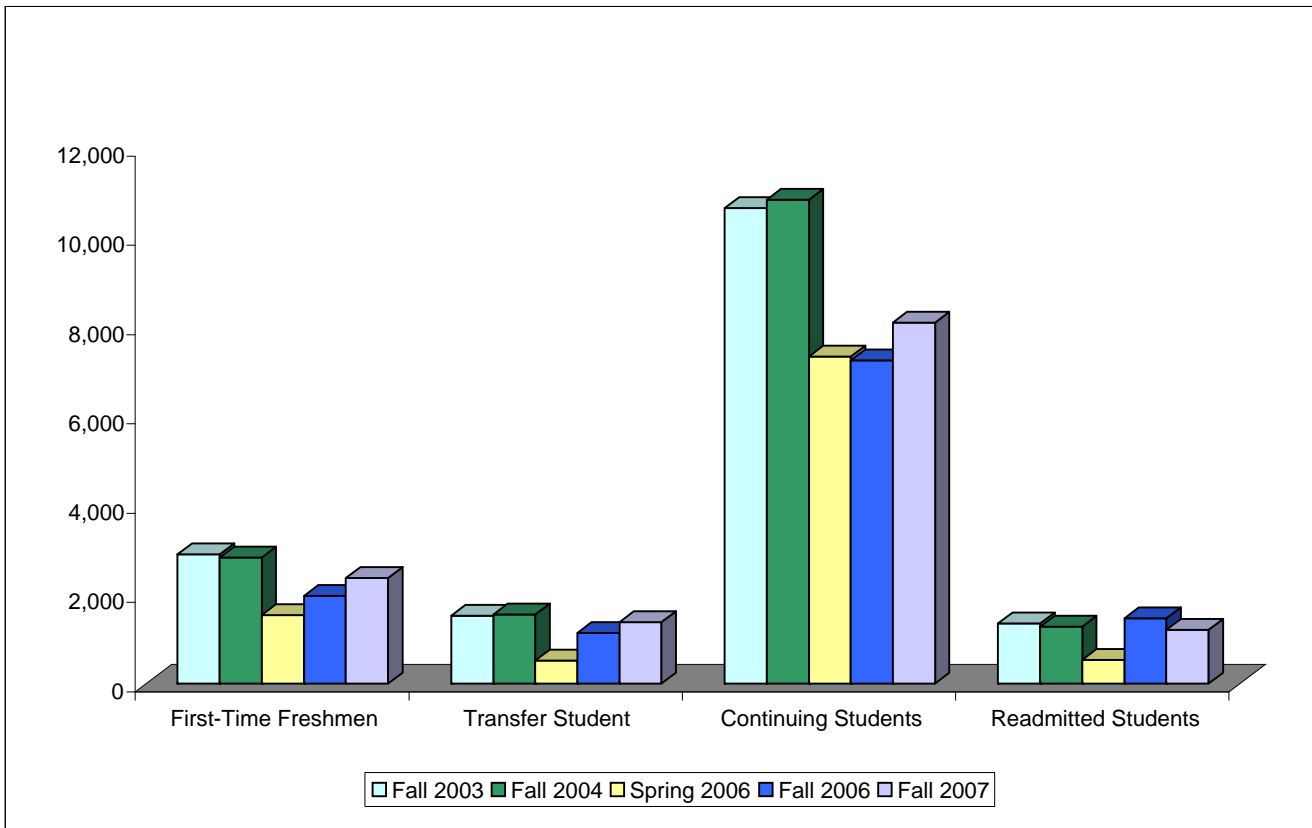
## Fall Enrollment History 2003-2007 by Admission Status

College Wide					
	Fall 2003	Fall 2004	Spring 2006	Fall 2006	Fall 2007
First-Time Freshmen	2,902	2,823	1,536	1,973	2,362
Transfer Student	1,526	1,547	518	1,140	1,384
Continuing Students	10,653	10,842	7,321	7,235	8,086
Readmitted Students	1,346	1,274	540	1,468	1,211
Exchange Students	72	65	86	98	163
Other Students	1	118	0	2	5
<b>Total</b>	<b>16,500</b>	<b>16,669</b>	<b>10,001</b>	<b>11,916</b>	<b>13,211</b>

Number Change	% Change
2003 to 2007	2003 to 2007
-540	-18.6%
-142	-9.3%
-2,567	-24.1%
-135	-10.0%
91	126.4%
4	0.0%
<b>-3,289</b>	<b>-19.9%</b>

Number Change	% Change
2006 to 2007	2006 to 2007
389	19.7%
244	21.4%
851	11.8%
-257	-17.5%
65	66.3%
3	0.0%
<b>1,295</b>	<b>10.9%</b>

Percentages					
First-Time Freshmen	18%	17%	15%	17%	18%
Transfer Student	9%	9%	5%	10%	10%
Continuing Students	65%	65%	73%	61%	61%
Readmitted Students	8%	8%	5%	12%	9%
Exchange Students	0%	0%	1%	1%	1%
Other Students	0%	1%	0%	0%	0%



## Fall Enrollment History 2003-2007 by Admission Status by Campus

City Park Campus						Number Change	% Change	Number Change	% Change
	Fall 2003	Fall 2004	Spring 2006	Fall 2006	Fall 2007	2003 to 2007	2003 to 2007	2006 to 2007	2006 to 2007
First-Time Freshmen	1,964	1,909	776	1,140	1,358	-606	-30.9%	218	19.1%
Transfer Student	1,142	1,122	302	745	910	-232	-20.3%	165	22.1%
Continuing Students	7,449	7,357	4,488	4,154	4,865	-2,584	-34.7%	711	17.1%
Readmitted Students	940	860	312	973	766	-174	-18.5%	-207	-21.3%
Exchange Students	60	56	48	66	121	61	101.7%	55	83.3%
Other Students	0	82	0	0	5	5	0.0%	5	0.0%
<b>Total</b>	<b>11,555</b>	<b>11,386</b>	<b>5,926</b>	<b>7,078</b>	<b>8,025</b>	<b>-3,530</b>	<b>-30.5%</b>	<b>947</b>	<b>13.4%</b>

West Bank Campus									
	Fall 2003	Fall 2004	Spring 2006	Fall 2006	Fall 2007				
First-Time Freshmen	568	517	482	479	588	20	3.5%	109	22.8%
Transfer Student	205	243	143	210	243	38	18.5%	33	15.7%
Continuing Students	1,931	1,909	1,535	1,598	1,701	-230	-11.9%	103	6.4%
Readmitted Students	271	249	174	321	274	3	1.1%	-47	-14.6%
Exchange Students	10	8	35	22	36	26	260.0%	14	63.6%
Other Students	1	19	0	2	0	-1	0.0%	-2	0.0%
<b>Total</b>	<b>2,986</b>	<b>2,945</b>	<b>2,369</b>	<b>2,632</b>	<b>2,842</b>	<b>-144</b>	<b>-4.8%</b>	<b>210</b>	<b>8.0%</b>

Charity School of Nursing									
	Fall 2003	Fall 2004	Spring 2006	Fall 2006	Fall 2007				
First-Time Freshmen	11	8	0	1	0	-11	-100.0%	-1	0.0%
Transfer Student	19	14	0	16	27	8	42.1%	11	0.0%
Continuing Students	646	784	641	808	775	129	20.0%	-33	-4.1%
Readmitted Students	46	54	16	43	42	-4	-8.7%	-1	-2.3%
Exchange Students	0	0	1	0	0	0	0.0%	0	0.0%
Other Students	0	0	0	0	0	0	0.0%	0	0.0%
<b>Total</b>	<b>722</b>	<b>860</b>	<b>658</b>	<b>868</b>	<b>844</b>	<b>122</b>	<b>16.9%</b>	<b>-24</b>	<b>-2.8%</b>

Northshore Site									
	Fall 2003	Fall 2004	Spring 2006	Fall 2006	Fall 2007				
First-Time Freshmen	359	389	278	353	416	57	15.9%	63	17.8%
Transfer Student	160	168	73	169	204	44	27.5%	35	20.7%
Continuing Students	627	792	657	675	745	118	18.8%	70	10.4%
Readmitted Students	89	111	38	131	129	40	44.9%	-2	-1.5%
Exchange Students	2	1	2	10	6	4	200.0%	-4	-40.0%
Other Students	0	17	0	0	0	0	0.0%	0	0.0%
<b>Total</b>	<b>1,237</b>	<b>1,478</b>	<b>1,048</b>	<b>1,338</b>	<b>1,500</b>	<b>263</b>	<b>21.3%</b>	<b>162</b>	<b>12.1%</b>

## Fall Enrollment History 2003-2007 by Classification

College Wide					
	Fall 2003	Fall 2004	Spring 2006	Fall 2006	Fall 2007
Freshmen	9,357	9,218	5,130	6,485	7,163
Sophomore	3,457	3,687	2,351	2,568	2,875
Other Undergraduates	3,604	3,640	2,455	2,790	3,036
Preparatory	82	124	65	73	137
<b>Total</b>	<b>16,500</b>	<b>16,669</b>	<b>10,001</b>	<b>11,916</b>	<b>13,211</b>

Number Change	% Change
2003 to 2007	2003 to 2007
-2,194	-23.4%
-582	-16.8%
-568	-15.8%
55	67.1%
<b>-3,289</b>	<b>-19.9%</b>

Number Change	% Change
2006 to 2007	2006 to 2007
678	10.5%
307	12.0%
246	8.8%
64	87.7%
<b>1,295</b>	<b>10.9%</b>

Percentages					
Freshmen	57%	55%	51%	54%	54%
Sophomore	21%	22%	24%	22%	22%
Other Undergraduates	22%	22%	25%	23%	23%
Preparatory	0%	1%	1%	1%	1%

## Fall Enrollment History 2003-2007 Classification by Campus

City Park Campus					
	Fall 2003	Fall 2004	Spring 2006	Fall 2006	Fall 2007
Freshmen	6,526	6,445	2,957	3,897	4,300
Sophomore	2,447	2,521	1,486	1,583	1,863
Other Undergraduates	2,508	2,334	1,443	1,549	1,759
Preparatory	74	86	40	49	103
<b>Total</b>	<b>11,555</b>	<b>11,386</b>	<b>5,926</b>	<b>7,078</b>	<b>8,025</b>

Number Change	% Change
2003 to 2007	2003 to 2007
-2,226	-34.1%
-584	-23.9%
-749	-29.9%
29	39.2%
<b>-3,530</b>	<b>-30.5%</b>

Number Change	% Change
2006 to 2007	2006 to 2007
403	10.3%
280	17.7%
210	13.6%
54	110.2%
<b>947</b>	<b>13.4%</b>

West Bank Campus					
Freshmen	1,897	1,716	1,400	1,592	1,717
Sophomore	663	753	560	601	633
Other Undergraduates	426	457	387	425	464
Preparatory	0	19	22	14	28
<b>Total</b>	<b>2,986</b>	<b>2,945</b>	<b>2,369</b>	<b>2,632</b>	<b>2,842</b>

-180	-9.5%
-30	-4.5%
38	8.9%
28	0.0%
<b>-144</b>	<b>-4.8%</b>

125	7.9%
32	5.3%
39	9.2%
14	100.0%
<b>210</b>	<b>8.0%</b>

Charity School of Nursing					
Freshmen	32	15	2	12	3
Sophomore	112	133	114	143	127
Other Undergraduates	578	711	541	713	714
Preparatory	0	1	1	0	0
<b>Total</b>	<b>722</b>	<b>860</b>	<b>658</b>	<b>868</b>	<b>844</b>

-29	-90.6%
15	13.4%
136	23.5%
0	0.0%
<b>122</b>	<b>16.9%</b>

-9	-75.0%
-16	-11.2%
1	0.1%
0	0.0%
<b>-24</b>	<b>-2.8%</b>

Northshore Site					
Freshmen	902	1,042	771	984	1,143
Sophomore	235	280	191	241	252
Other Undergraduates	92	138	84	103	99
Preparatory	8	18	2	10	6
<b>Total</b>	<b>1,237</b>	<b>1,478</b>	<b>1,048</b>	<b>1,338</b>	<b>1,500</b>

241	26.7%
17	7.2%
7	7.6%
-2	-25.0%
<b>263</b>	<b>21.3%</b>

159	16.2%
11	4.6%
-4	-3.9%
-4	-40.0%
<b>162</b>	<b>12.1%</b>

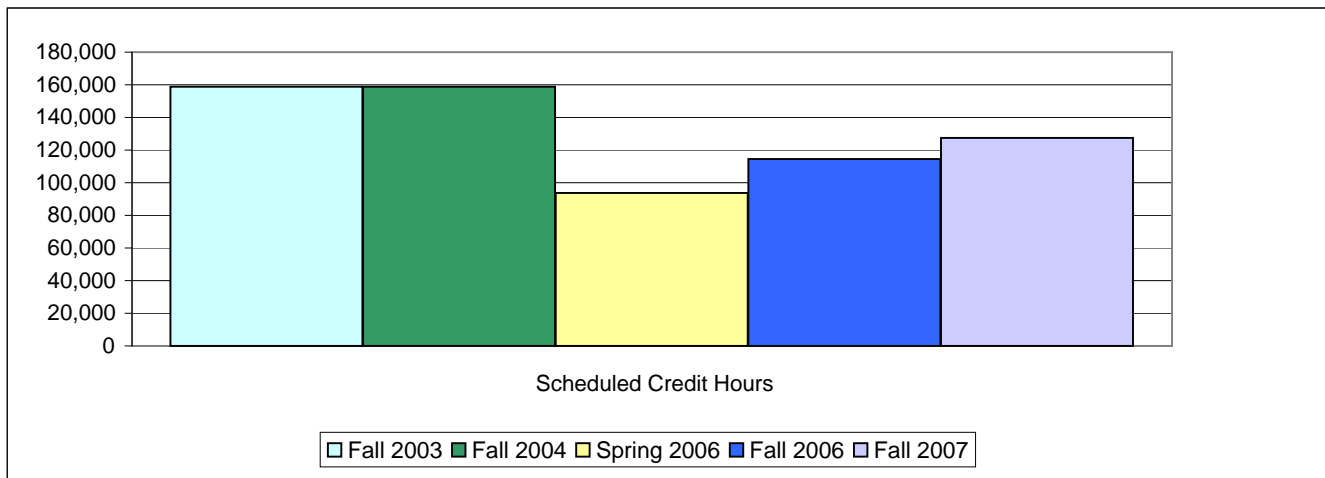
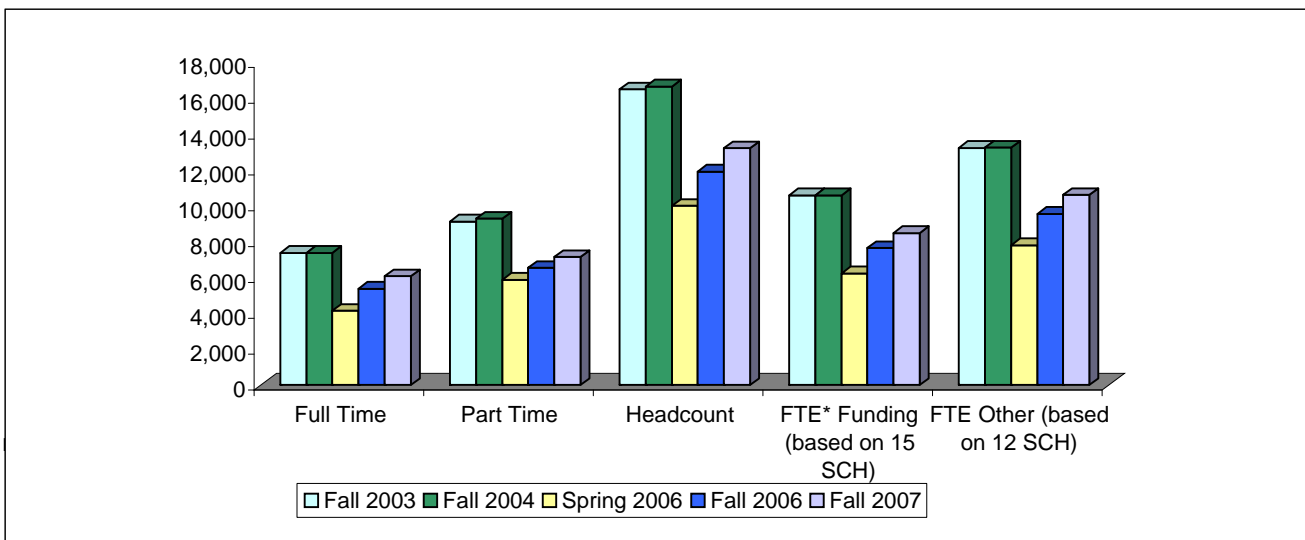
### Fall Enrollment History 2003-2007 by Enrollment Status, Headcount, FTE, SCH

College Wide	Fall 2003	Fall 2004	Spring 2006	Fall 2006	Fall 2007
Full Time	7,369	7,380	4,134	5,378	6,062
Part Time	9,131	9,289	5,867	6,538	7,149
Headcount	16,500	16,666	10,001	11,916	13,211
SCH	158,745	158,987	93,580	114,617	127,369
FTE* Funding (based on 15 SCH)	10,583	10,599	6,239	7,641	8,491
FTE Other (based on 12 SCH)	13,229	13,249	7,798	9,551	10,614

Number Change 2003 to 2007	% Change 2003 to 2007
-1,307	-17.7%
-1,982	-21.7%
-3,289	-19.9%
-31,376	-19.8%
-2,092	-19.8%
-2,615	-19.8%

Number Change 2006 to 2007	% Change 2006 to 2007
684	12.7%
611	9.3%
1,295	10.9%
12,752	11.1%
850	11.1%
1,063	11.1%

Percentages					
Full Time	45%	44%	41%	45%	46%
Part Time	55%	56%	59%	55%	54%



**Fall Enrollment History 2003-2007**  
**Enrollment Status, Headcount, FTE, SCH**

<b>City Park Campus</b>	<b>Fall 2003</b>	<b>Fall 2004</b>	<b>Spring 2006</b>	<b>Fall 2006</b>	<b>Fall 2007</b>
Full Time	5,344	5,262	2,565	3,369	3,787
Part Time	6,211	6,124	3,361	3,709	4,238
Headcount	11,555	11,383	5,926	7,078	8,025
SCH	112,408	109,793	56,407	69,139	77,863
FTE* Funding (based on 15 SCH)	7,494	7,320	3,760	4,609	5,191
FTE Other (based on 12 SCH)	9,367	9,149	4,701	5,762	6,489

<b>Number Change</b>	<b>% Change</b>
<b>2003 to 2007</b>	<b>2003 to 2007</b>
-1,557	-29.1%
-1,973	-31.8%
-3,530	-30.5%
-34,545	-30.7%
-2,303	-30.7%
-2,879	-30.7%

<b>Number Change</b>	<b>% Change</b>
<b>2006 to 2007</b>	<b>2006 to 2007</b>
418	12.4%
529	14.3%
947	13.4%
8,724	12.6%
582	12.6%
727	12.6%

<b>West Bank Campus</b>	<b>Fall 2003</b>	<b>Fall 2004</b>	<b>Spring 2006</b>	<b>Fall 2006</b>	<b>Fall 2007</b>
Full Time	1,277	1,274	970	1,204	1,329
Part Time	1,709	1,671	1,399	1,428	1,513
Headcount	2,986	2,945	2,369	2,632	2,842
SCH	27,728	27,284	21,326	24,348	26,655
FTE* Funding (based on 15 SCH)	1,849	1,819	1,422	1,623	1,777
FTE Other (based on 12 SCH)	2,311	2,274	1,777	2,029	2,221

52	4.1%
-196	-11.5%
-144	-4.8%
-1,073	-3.9%
-72	-3.9%
-89	-3.9%

125	10.4%
85	6.0%
210	8.0%
2,307	9.5%
154	9.5%
192	9.5%

<b>Charity School of Nursing</b>	<b>Fall 2003</b>	<b>Fall 2004</b>	<b>Spring 2006</b>	<b>Fall 2006</b>	<b>Fall 2007</b>
Full Time	233	279	200	272	268
Part Time	489	581	458	596	576
Headcount	722	860	658	868	844
SCH	7,468	8,939	6,587	9,128	8,798
FTE* Funding (based on 15 SCH)	498	596	439	609	587
FTE Other (based on 12 SCH)	622	745	549	761	733

35	15.0%
87	17.8%
122	16.9%
1,330	17.8%
89	17.8%
111	17.8%

-4	-1.5%
-20	-3.4%
-24	-2.8%
-330	-3.6%
-22	-3.6%
-28	-3.6%

<b>Northshore Site</b>	<b>Fall 2003</b>	<b>Fall 2004</b>	<b>Spring 2006</b>	<b>Fall 2006</b>	<b>Fall 2007</b>
Full Time	515	565	399	533	678
Part Time	722	913	649	805	822
Headcount	1,237	1,478	1,048	1,338	1,500
SCH	11,141	12,971	9,260	12,002	14,053
FTE* Funding (based on 15 SCH)	743	865	617	800	937
FTE Other (based on 12 SCH)	928	1,081	772	1,000	1,171

163	31.7%
100	13.9%
263	21.3%
2,912	26.1%
194	26.1%
243	26.1%

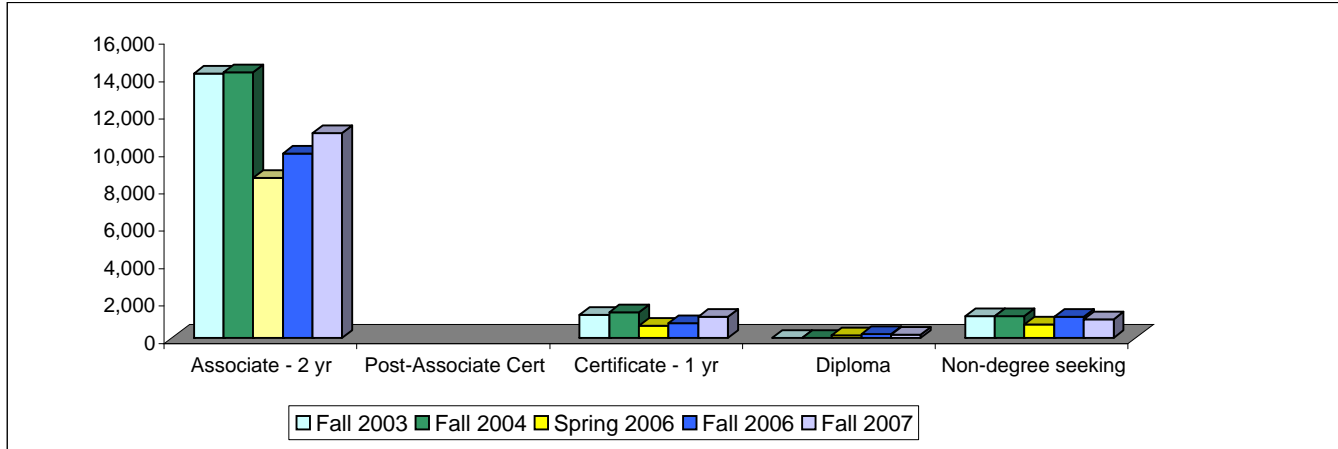
145	27.2%
17	2.1%
162	12.1%
2,051	17.1%
137	17.1%
171	17.1%

## Fall Enrollment History 2003-2007 by Award Sought

College Wide	Fall 2003	Fall 2004	Spring 2006	Fall 2006	Fall 2007
Associate - 2 yr	14,125	14,196	8,565	9,855	10,934
Post-Associate Cert					
Certificate - 1 yr	1,216	1,342	629	778	1,122
Diploma	0	0	117	176	164
Non-degree seeking	1,159	1,131	690	1,107	991
<b>Total</b>	<b>16,500</b>	<b>16,669</b>	<b>10,001</b>	<b>11,916</b>	<b>13,211</b>

Number Change	% Change
2003 to 2007	2003 to 2007
-3,191	-22.6%
-94	-7.7%
164	0.0%
-168	-14.5%
<b>-3,289</b>	<b>-19.9%</b>

Number Change	% Change
2006 to 2007	2006 to 2007
1,079	10.9%
344	0.0%
-12	-6.8%
-116	-10.5%
<b>1,295</b>	<b>10.9%</b>



City Park Campus	Fall 2003	Fall 2004	Spring 2006	Fall 2006	Fall 2007
Associate - 2 yr	9,742	9,484	4,956	5,741	6,415
Post-Associate Cert					
Certificate - 1 yr	877	970	435	533	798
Diploma	0	0	31	45	50
Non-degree seeking	936	932	504	759	762
<b>Total</b>	<b>11,555</b>	<b>11,386</b>	<b>5,926</b>	<b>7,078</b>	<b>8,025</b>

Number Change	% Change
2003 to 2007	2003 to 2007
-3,327	-34.2%
-79	-9.0%
50	0.0%
-174	-18.6%
<b>-3,530</b>	<b>-30.5%</b>

Number Change	% Change
2006 to 2007	2006 to 2007
674	11.7%
265	49.7%
5	11.1%
3	0.4%
<b>947</b>	<b>13.4%</b>

West Bank Campus	Fall 2003	Fall 2004	Spring 2006	Fall 2006	Fall 2007
Associate - 2 yr	2,655	2,605	2,033	2,214	2,413
Post-Associate Cert					
Certificate - 1 yr	191	201	141	174	208
Diploma	0	0	33	37	34
Non-degree seeking	140	139	162	207	187
<b>Total</b>	<b>2,986</b>	<b>2,945</b>	<b>2,369</b>	<b>2,632</b>	<b>2,842</b>

Number Change	% Change
2003 to 2007	2003 to 2007
-242	-9.1%
17	8.9%
34	0.0%
47	33.6%
<b>-144</b>	<b>-4.8%</b>

Number Change	% Change
2006 to 2007	2006 to 2007
199	9.0%
34	19.5%
-3	-8.1%
-20	-9.7%
<b>210</b>	<b>8.0%</b>

Charity School of Nursing	Fall 2003	Fall 2004	Spring 2006	Fall 2006	Fall 2007
Associate - 2 yr	646	785	619	788	776
Post-Associate Cert					
Certificate - 1 yr	69	75	0	0	0
Diploma	0	0	39	80	68
Non-degree seeking	7	0	0	0	0
<b>Total</b>	<b>722</b>	<b>860</b>	<b>658</b>	<b>868</b>	<b>844</b>

Number Change	% Change
2003 to 2007	2003 to 2007
130	20.1%
-69	-100.0%
68	0.0%
-7	-100.0%
<b>122</b>	<b>16.9%</b>

Number Change	% Change
2006 to 2007	2006 to 2007
-12	-1.5%
0	0.0%
-12	-15.0%
0	0.0%
<b>-24</b>	<b>-2.8%</b>

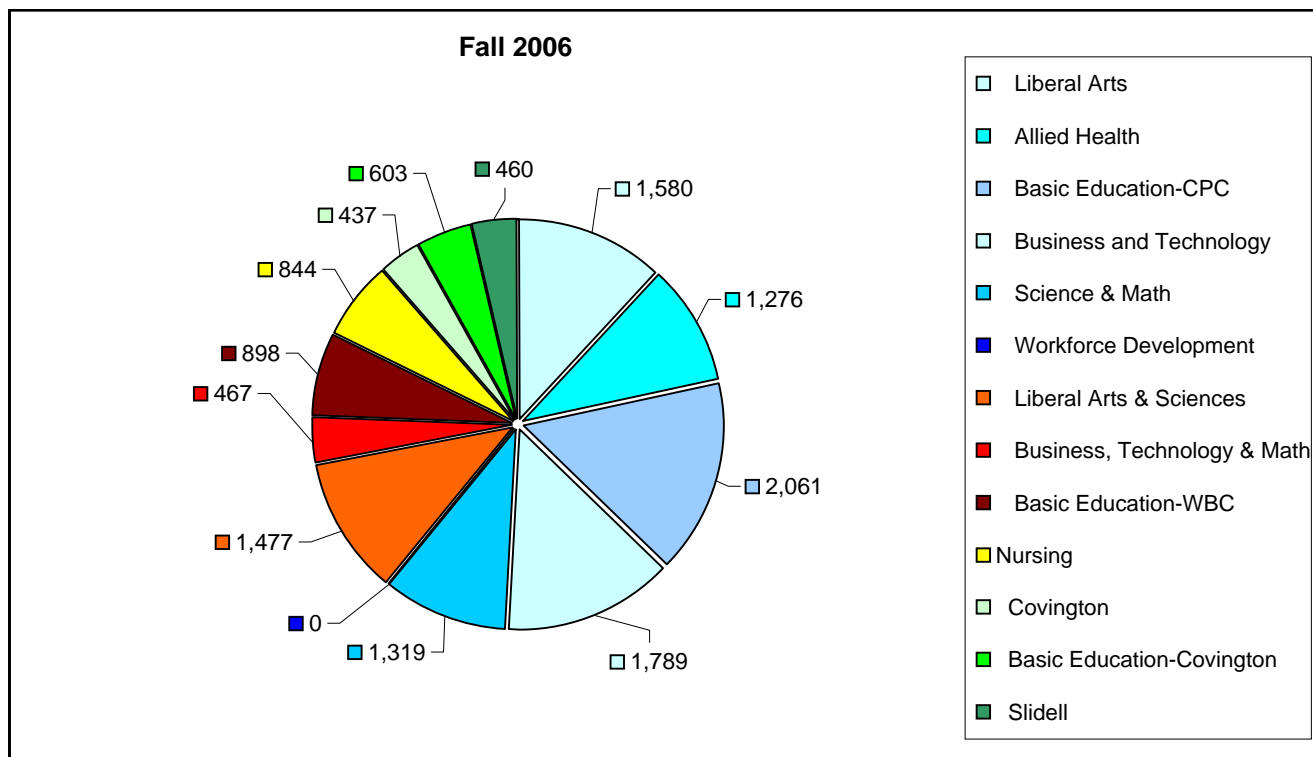
Northshore Site	Fall 2003	Fall 2004	Spring 2006	Fall 2006	Fall 2007
Associate - 2 yr	1,082	1,322	957	1,112	1,330
Post-Associate Cert					
Certificate - 1 yr	79	96	53	71	116
Diploma	0	0	14	14	12
Non-degree seeking	76	60	24	141	42
<b>Total</b>	<b>1,237</b>	<b>1,478</b>	<b>1,048</b>	<b>1,338</b>	<b>1,500</b>

Number Change	% Change
2003 to 2007	2003 to 2007
248	22.9%
37	46.8%
12	0.0%
-34	-44.7%
<b>263</b>	<b>21.3%</b>

Number Change	% Change
2006 to 2007	2006 to 2007
218	19.6%
45	63.4%
-2	-14.3%
-99	-70.2%
<b>162</b>	<b>12.1%</b>

### Fall Enrollment History 2003-2007 by Division

	Fall 2003	Fall 2004	Spring 2006	Fall 2006	Fall 2007	Number Change 2003 to 2007	% Change 2003 to 2007	Number Change 2006 to 2007	% Change 2006 to 2007
<b>City Park Campus</b>									
Liberal Arts	2,771	2,526	1,316	1,400	1,580	-1,191	-43.0%	180	12.9%
Allied Health	2,073	1,904	1,067	1,133	1,276	-797	-38.4%	143	12.6%
Basic Education-CPC	1,796	2,436	1,098	1,806	2,061	265	14.8%	255	14.1%
Business and Technology	2,652	2,543	1,324	1,565	1,789	-863	-32.5%	224	14.3%
Science & Math	2,066	1,946	1,121	1,164	1,319	-747	-36.2%	155	13.3%
Workforce Development	197	31	0	10	0	-197	-100.0%	-10	-100.0%
<b>Campus Total</b>	<b>11,555</b>	<b>11,386</b>	<b>5,926</b>	<b>7,078</b>	<b>8,025</b>	<b>-3,530</b>	<b>-30.5%</b>	<b>947</b>	<b>13.4%</b>
<b>West Bank Campus</b>									
Liberal Arts & Sciences	1948	1,723	1,271	1,407	1,477	-471	-24.2%	70	5.0%
Business, Technology & Math	582	456	399	408	467	-115	-19.8%	59	14.5%
Basic Education-WBC	456	766	699	817	898	442	96.9%	81	9.9%
<b>Campus Total</b>	<b>2,986</b>	<b>2,945</b>	<b>2,369</b>	<b>2,632</b>	<b>2,842</b>	<b>-144</b>	<b>-4.8%</b>	<b>210</b>	<b>8.0%</b>
<b>Nursing</b>	<b>722</b>	<b>860</b>	<b>658</b>	<b>868</b>	<b>844</b>	<b>122</b>	<b>16.9%</b>	<b>-24</b>	<b>-2.8%</b>
<b>Northshore Site</b>									
Covington	283	333	311	464	437	154	54.4%	-27	-5.8%
Basic Education-Covington		390	360	377	603	N/A	N/A	226	59.9%
Slidell	954	755	377	497	460	-494	-51.8%	-37	-7.4%
<b>Site Total</b>	<b>1,237</b>	<b>1,478</b>	<b>1,048</b>	<b>1,338</b>	<b>1,500</b>	<b>263</b>	<b>21.3%</b>	<b>162</b>	<b>12.1%</b>
<b>College Total</b>	<b>16,500</b>	<b>16,669</b>	<b>10,001</b>	<b>11,916</b>	<b>13,211</b>	<b>-3,289</b>	<b>-19.9%</b>	<b>1,295</b>	<b>10.9%</b>



## Fall Enrollment History 2003-2007 by Course Location

Course Location Enrollment						Number Change	% Change	Number Change	% Change
	Fall 2003	Fall 2004	Spring 2006	Fall 2006	Fall 2007	2003 to 2007	2003 to 2007	2006 to 2007	2006 to 2007
City Park Campus									
West Bank Campus									
Charity School of Nursing									
Northshore Site									

Note: Student enrollment by course location is a duplicated enrollment count based on the location of courses taken that semester. The combined figures will not equal the college-wide total.

## Fall Enrollment History 2003-2007 by Online Status

College Wide						Number Change	% Change	Number Change	% Change
	Fall 2003	Fall 2004	Spring 2006	Fall 2006	Fall 2007	2003 to 2007	2003 to 2007	2006 to 2007	2006 to 2007
No. of students taking a web class			2,471	2,781	3,176			395	14.2%
Students taking only web classes			879	758	789			31	4.1%
Average no. of web courses taken				1.8	1.8			0	0.0%
Students in only F2F classes			7,531	9,135	10,034			899	9.8%
<b>Total</b>			<b>10,001</b>	<b>11,916</b>	<b>13,210</b>			<b>1,294</b>	<b>10.9%</b>

Note: F2F = Face to Face

Percentages					
Students taking a web class			24.7%	23.3%	24.0%
Students taking only web classes			8.8%	6.4%	6.0%
Average no. of web courses taken					
Students in only F2F classes			75.3%	76.7%	76.0%

Note: Percentages will not add up to 100%.

City Park						2003 to 2007	2003 to 2007	2006 to 2007	2006 to 2007
	Fall 2003	Fall 2004	Spring 2006	Fall 2006	Fall 2007				
No. of students taking a web class			1,826	1,890	2,042			152	8.0%
Students taking only web classes			767	606	573			-33	-5.4%
Average no. of web courses taken			2.0	1.9	1.8			-0.1	0.0%
Students in only F2F classes			4,092	5,196	5,982			786	15.1%
<b>Total</b>			<b>5,926</b>	<b>7,086</b>	<b>8,024</b>			<b>938</b>	<b>13.2%</b>

West Bank						to 2007	to 2007	to 2007	to 2007
	Fall 2003	Fall 2004	Spring 2006	Fall 2006	Fall 2007				
No. of students taking a web class			447	587	791			204	34.8%
Students taking only web classes			101	139	199			60	43.2%
Average no. of web courses taken			1.7	1.7	1.8			0.2	0.0%
Students in only F2F classes			1,920	2,045	2,051			6	0.3%
<b>Total</b>			<b>2,369</b>	<b>2,632</b>	<b>2,842</b>			<b>210</b>	<b>8.0%</b>

Charity School of Nursing						to 2007	to 2007	to 2007	to 2007
	Fall 2003	Fall 2004	Spring 2006	Fall 2006	Fall 2007				
No. of students taking a web class			17	47	27			-20	-42.6%
Students taking only web classes			1	0	0			0	0.0%
Average no. of web courses taken			1.1	1.0	1.0			0.0	0.0%
Students in only F2F classes			641	821	817			-4	-0.5%
<b>Total</b>			<b>658</b>	<b>868</b>	<b>844</b>			<b>-24</b>	<b>-2.8%</b>

Northshore site						to 2007	to 2007	to 2007	to 2007
	Fall 2003	Fall 2004	Spring 2006	Fall 2006	Fall 2007				
No of students taking a web class			180	257	316			59	23.0%
Students taking only web classes			9	13	17			4	30.8%
Average no. of web courses taken			1.3	1.3	1.3			0	0.0
Students in only F2F classes			868	1,081	1,184			103	9.5%
<b>Total</b>			<b>1,048</b>	<b>1,338</b>	<b>1,500</b>			<b>162</b>	<b>12.1%</b>



### Fall Full-time Enrollment History 2003-2007 by Program

College Wide						Number	%	Number	%
	Fall	Fall	Spring	Fall	Fall	Change	Change	Change	Change
	2003	2004	2006	2006	2007	2004	2004	2006	2006
						to 2007	to 2007	to 2007	to 2007
Accounting		251	105	151	197	-54	-21.5%	46	30.5%
Administrative Office Tech		55	33	36	39	-16	-29.1%	3	8.3%
Air Conditioning & Refrigeration						N/A	N/A	N/A	N/A
American Sign Language Interpreting		20	11	18	19	-1	-5.0%	1	5.6%
American Sign Language Studies		11	5	13	10	-1	-9.1%	-3	-23.1%
Business Administration		551	322	472	586	35	6.4%	114	24.2%
Business Training		1				N/A	N/A	N/A	N/A
Care & Development of Young Children		325	179	184	149	-176	-54.2%	-35	-19.0%
Carpentry		1	1	1	0	-1	-100.0%	-1	-100.0%
Certified Nurse Assistant		0	0	0	0	0	0.0%	0	0.0%
CET-Architectural Engineering		79	52	62	61	-18	-22.8%	-1	-1.6%
CET-Civil Construction Technology		26	7	12	16	-10	-38.5%	4	33.3%
CET-Construction Management		20	10	20	23	3	15.0%	3	15.0%
Computer Aided Drafting & Design -CADD		42	18	35	39	-3	-7.1%	4	11.4%
Computer Information Technology		198	84	115	124	-74	-37.4%	9	7.8%
Computer Network Technology		110	66	65	48	-62	-56.4%	-17	-26.2%
Computer Repair (Certificate)		22	6	7	18	-4	-18.2%	11	157.1%
Construction Management Technology		10	0	0	0	-10	-100.0%	0	0.0%
Criminal Justice		285	186	210	210	-75	-26.3%	0	0.0%
Culinary Arts		101	52	72	86	-15	-14.9%	14	19.4%
Dental Hygiene		2	2	1	0	-2	-100.0%	-1	-100.0%
Dental Laboratory Technology		14	0	0	0	-14	-100.0%	0	0.0%
Diagnostic Medical Sonography		42	41	56	59	17	40.5%	3	5.4%
Dietetic Technician		26	9	14	16	-10	-38.5%	2	14.3%
Drafting (Certificate)		3	1	1	0	-3	-100.0%	-1	-100.0%
Electrical Construction Technician		7	14	20	21	14	200.0%	1	5.0%
Electrical Electronics Engineering Technology		66	35	57	61	-5	-7.6%	4	7.0%
Electronics Repair		6				N/A	N/A	N/A	N/A
Emergency Medical Technology		75	30	48	50	-25	-33.3%	2	4.2%
English as a Second Language		174	146	179	199	25	14.4%	20	11.2%
EST-Biomedical Equip Repair Technology		26	25	23	16	-10	-38.5%	-7	-30.4%
EST-Computer Repair Technology		21	13	16	18	-3	-14.3%	2	12.5%
EST-Electronics Repair Technology		7	2	2	0	-7	-100.0%	-2	-100.0%
Fine Arts		58	35	37	47	-11	-19.0%	10	27.0%
Fire Protection Technology		21	7	20	10	-11	-52.4%	-10	-50.0%
Food Service Careers		1	0	0	0	-1	-100.0%	0	0.0%
Funeral Service Education		78	41	55	52	-26	-33.3%	-3	-5.5%
General Science		167	86	113	185	18	10.8%	72	63.7%
General Studies		852	474	630	766	-86	-10.1%	136	21.6%
Health Information Technology		47	24	33	18	-29	-61.7%	-15	-45.5%
Homeland Security					0	N/A	N/A	N/A	N/A
Horticulture		11	8	8	17	6	54.5%	9	112.5%
Hospitality Management		52	31	35	36	-16	-30.8%	1	2.9%
Interior Design		92	51	62	59	-33	-35.9%	-3	-4.8%
IT- Machine Tool Technology		5				N/A	N/A	N/A	N/A
Legal Secretary		35	17	15	17	-18	-51.4%	2	13.3%
Management		121	92	132	130	N/A	N/A	-2	-1.5%
Manufacturing		0				N/A	N/A	N/A	N/A

### Fall Full-time Enrollment History 2003-2007 by Program

College Wide						Number Change	% Change	Number Change	% Change
	Fall 2003	Fall 2004	Spring 2006	Fall 2006	Fall 2007	2004 to 2007	2004 to 2007	2006 to 2007	2006 to 2007
Massage Therapy		6	8	13	13	7	116.7%	0	0.0%
Medical Coding - Certificate		21	11	25	38	17	81.0%	13	52.0%
Medical Laboratory Technician		52	28	20	29	-23	-44.2%	9	45.0%
Motor Vehicle Technology		135	86	107	111	-24	-17.8%	4	3.7%
Music		72	29	49	48	-24	-33.3%	-1	-2.0%
Nuclear Medicine Technology		19	15	11	19	0	0.0%	8	72.7%
Nursing		209	168	196	201	-8	-3.8%	5	2.6%
Occupational Therapy Assistant		30	12	18	23	-7	-23.3%	5	27.8%
Ophthalmic Medical Assistant		6	4	4	15	9	150.0%	11	275.0%
Pastry Art - Certificate		4	2	0	2	-2	-50.0%	2	0.0%
Performance & Media Arts		127	72	74	97	-30	-23.6%	23	31.1%
Pharmacy Technician		135	49	67	73	-62	-45.9%	6	9.0%
Physical Therapist Assisting		174	98	129	134	-40	-23.0%	5	3.9%
Practical Nursing		117	59	108	101	-16	-13.7%	-7	-6.5%
Pre-Nursing		1,332	755	1001	1088	-244	-18.3%	87	8.7%
Radiation Therapy (Certificate)		2	6	6	11	9	450.0%	5	83.3%
Radiologic Technology		571	271	371	358	-213	-37.3%	-13	-3.5%
Real Estate Agent				0	4	N/A	N/A	N/A	N/A
Respiratory Care Technology		73	36	23	62	-11	-15.1%	39	169.6%
Safety & Health Technology		7	15	7	11	4	57.1%	4	57.1%
Surgical Technology		74	23	35	42	-32	-43.2%	7	20.0%
Teaching Grades 1-5					40	N/A	N/A	N/A	N/A
Veterinary Technology			18	33	53	N/A	N/A	20	60.6%
Visual Communications		97	48	56	80	-17	-17.5%	24	42.9%
Website Developer				0	7	N/A	N/A	N/A	N/A
Welding Technology		0	0	0	0	0	0.0%	0	0.0%
Workforce		0	0	0	0	0	0.0%	0	0.0%
<b>Total</b>		<b>7,380</b>	<b>4,134</b>	<b>5,383</b>	<b>6,062</b>	<b>6,062</b>	<b>-17.9%</b>	<b>679</b>	<b>12.6%</b>

\* Formerly named Early Childhood Education

### Fall Part-time Enrollment History 2003-2007 by Program

College Wide						Number Change	% Change	Number Change	% Change
	Fall 2003	Fall 2004	Spring 2006	Fall 2006	Fall 2007	2004 to 2007	2004 to 2007	2006 to 2007	2006 to 2007
Accounting		252	149	159	195	-57	-22.6%	36	22.6%
Administrative Office Tech		73	52	54	39	-34	-46.6%	-15	-27.8%
Air Conditioning & Refrigeration		2	1	1	0	-2	-100.0%	-1	-100.0%
American Sign Language Interpreting		30	17	18	21	-9	-30.0%	3	16.7%
American Sign Language Studies		25	13	16	9	-16	-64.0%	-7	-43.8%
Business Administration		555	320	381	428	-127	-22.9%	47	12.3%
Business Training		2	0	0	0	-2	-100.0%	0	0.0%
Care & Development of Young Children		521	224	257	193	-328	-63.0%	-64	-24.9%
Carpentry		7	0	0	0	-7	-100.0%	0	0.0%
Certified Nurse Assistant		0	0	0	0	0	0.0%	0	0.0%
CET-Architectural Engineering		51	38	44	55	4	7.8%	11	25.0%
CET-Civil Construction Technology		27	15	18	22	-5	-18.5%	4	22.2%
CET-Construction Management		21	15	18	27	6	28.6%	9	50.0%
Computer Aided Drafting & Design -CADD		51	45	53	82	31	60.8%	29	54.7%
Computer Information Technology		237	119	101	102	-135	-57.0%	1	1.0%
Computer Network Technology		104	65	56	56	-48	-46.2%	0	0.0%
Computer Repair (Certificate)		20	7	13	15	-5	-25.0%	2	15.4%
Construction Management Technology		12	3	1	0	-12	-100.0%	-1	-100.0%

## Fall Part-time Enrollment History 2003-2007 by Program

College Wide						Number Change	% Change	Number Change	% Change
	Fall 2003	Fall 2004	Spring 2006	Fall 2006	Fall 2007	2004 to 2007	2004 to 2007	2006 to 2007	2006 to 2007
Criminal Justice		243	175	167	184	-59	-24.3%	17	10.2%
Culinary Arts		123	65	84	120	-3	-2.4%	36	42.9%
Dental Hygiene		4	2	1	0	-4	-100.0%	-1	-100.0%
Dental Laboratory Technology		7	1	0	0	-7	-100.0%	0	0.0%
Diagnostic Medical Sonography		68	39	47	70	2	2.9%	23	48.9%
Dietetic Technician		40	18	16	21	-19	-47.5%	5	31.3%
Drafting (Certificate)		3	1	0	0	-3	-100.0%	0	0.0%
Electrical Construction Technician		15	9	24	39	24	160.0%	15	62.5%
Electrical Electronics Engineering Technology		85	40	54	63	-22	-25.9%	9	16.7%
Electronics Repair		2	1	0	0	-2	-100.0%	0	0.0%
Emergency Medical Technology		107	68	77	72	-35	-32.7%	-5	-6.5%
English as a Second Language		85	49	63	76	-9	-10.6%	13	20.6%
EST-Biomedical Equip Repair Technology		35	10	18	14	-21	-60.0%	-4	-22.2%
EST-Computer Repair Technology		28	9	16	19	-9	-32.1%	3	18.8%
EST-Electronics Repair Technology		10	2	0	0	-10	-100.0%	0	0.0%
Fine Arts		84	55	70	81	-3	-3.6%	11	15.7%
Fire Protection Technology		103	61	73	72	-31	-30.1%	-1	-1.4%
Food Service Careers		4	0	0	0	-4	-100.0%	0	0.0%
Funeral Service Education		85	54	50	44	-41	-48.2%	-6	-12.0%
General Science		189	110	108	159	-30	-15.9%	51	47.2%
General Studies		1,089	708	726	829	-260	-23.9%	103	14.2%
Health Information Technology		114	57	130	51	-63	-55.3%	-79	-60.8%
Homeland Security					1	N/A	N/A	1	0.0%
Horticulture		49	27	33	41	-8	-16.3%	8	24.2%
Hospitality Management		37	19	23	32	-5	-13.5%	9	39.1%
Interior Design		99	51	62	71	-28	-28.3%	9	14.5%
IT- Machine Tool Technology		11	2	2	0	-11	-100.0%	-2	-100.0%
Legal Secretary		41	19	27	22	-19	-46.3%	-5	-18.5%
Management		140	72	66	107	-33	-23.6%	41	62.1%
Manufacturing		2		0	0	-2	-100.0%	0	0.0%
Massage Therapy		19	22	25	37	18	94.7%	12	48.0%
Medical Coding - Certificate		17	53	46	65	48	282.4%	19	41.3%
Medical Laboratory Technician		98	51	56	62	-36	-36.7%	6	10.7%
Motor Vehicle Technology		131	56	65	86	-45	-34.4%	21	32.3%
Music		65	24	30	45	-20	-30.8%	15	50.0%
Nuclear Medicine Technology		25	13	25	12	-13	-52.0%	-13	-52.0%
Nursing		576	451	592	575	-1	-0.2%	-17	-2.9%
Occupational Therapy Assistant		40	16	20	23	-17	-42.5%	3	15.0%
Ophthalmic Medical Assistant		4	0	2	1	-3	-75.0%	-1	0.0%
Pastry Art - Certificate		2	3	5	1	-1	-50.0%	-4	-80.0%
Performance & Media Arts		80	46	44	68	-12	-15.0%	24	54.5%
Pharmacy Technician		135	65	68	67	-68	-50.4%	-1	-1.5%
Physical Therapist Assisting		133	112	121	115	-18	-13.5%	-6	-5.0%
Practical Nursing		109	60	69	63	-46	-42.2%	-6	-8.7%
Pre-Nursing		1,925	1395	1504	1597	-328	-17.0%	93	6.2%
Radiation Therapy (Certificate)		7	9	13	15	8	114.3%	2	15.4%
Radiologic Technology		652	435	434	486	-166	-25.5%	52	12.0%
Real Estate Agent				4	2	N/A	N/A	N/A	N/A
Respiratory Care Technology		96	67	86	92	-4	-4.2%	6	7.0%

\* Formerly named Early Childhood Education

### Fall Part-time Enrollment History 2003-2007 by Program

College Wide						Number Change	% Change	Number Change	% Change
	Fall 2003	Fall 2004	Spring 2006	Fall 2006	Fall 2007	2004 to 2007	2004 to 2007	2006 to 2007	2006 to 2007
Safety & Health Technology		24	17	16	14	-10	-41.7%	-2	-12.5%
Surgical Technology		178	100	92	135	-43	-24.2%	43	46.7%
Teaching Grades 1-5					28	N/A	N/A	28	0.0%
Veterinary Technology			13	29	48	N/A	N/A	19	65.5%
Visual Communications		82	53	66	70	-12	-14.6%	4	6.1%
Website Developer				5	10	N/A	N/A	N/A	N/A
Welding Technology		0	0	0	0	0	0.0%	0	0.0%
Workforce		0	0	0	0	0	0.0%	0	0.0%
<b>Total</b>		<b>9,290</b>	<b>5,868</b>	<b>6,544</b>	<b>7,149</b>	<b>-2,141</b>	<b>-23.0%</b>	<b>605</b>	<b>9.2%</b>

### Fall Enrollment History 2003-2007 by Program

College Wide						Number Change	% Change	Number Change	% Change
	Fall 2003	Fall 2004	Spring 2006	Fall 2006	Fall 2007	2003 to 2007	2003 to 2007	2006 to 2007	2006 to 2007
Accounting	501	518	254	310	392	-109	-21.8%	82	26.5%
Administrative Office Technology*	145	130	85	90	78	-67	-46.2%	-12	-13.3%
Air Conditioning & Refrigeration	9	2	1	1	0	-9	-100.0%	-1	-100.0%
American Sign Language Interpreting	63	57	28	36	40	-23	-36.5%	4	11.1%
American Sign Language Studies	43	36	18	29	19	-24	-55.8%	-10	-34.5%
Business Administration	1,024	1,109	641	853	1,014	-10	-1.0%	161	18.9%
Business Training	6	3	0	0	0	-6	-100.0%	0	0.0%
CADD (Drafting-ITMF)	65	93	63	87	121	56	86.2%	34	39.1%
Care & Development of Young Children*	814	845	403	440	342	-472	-58.0%	-98	-22.3%
Carpentry	20	7	1	1	0	-20	-100.0%	-1	-100.0%
Certified Nurse Assistant	7	0	0	1	0	-7	-100.0%	-1	0.0%
CET-Architectural Technology	110	131	90	106	116	6	5.5%	10	9.4%
CET-Civil Construction Technology	68	52	22	30	38	-30	-44.1%	8	26.7%
CET-Construction Management	33	42	25	38	50	17	51.5%	12	31.6%
Computer Information Technology	572	432	203	216	226	-346	-60.5%	10	4.6%
Computer Network Technology	278	211	131	120	104	-174	-62.6%	-16	-13.3%
Computer Repair	38	39	13	20	33	-5	-13.2%	13	65.0%
Construction Management	17	20	3			N/A	N/A	N/A	N/A
Criminal Justice	579	543	361	377	394	-185	-32.0%	17	4.5%
Culinary Arts	219	218	117	157	206	-13	-5.9%	49	31.2%
Culinary Management**	17	4	0	0	0	-17	-100.0%	0	#DIV/0!
Dental Hygiene	22	6	4	2	0	-22	-100.0%	-2	0.0%
Dental Laboratory Technology	24	18	1	0	129	105	437.5%	129	#DIV/0!
Diagnostic Medical Sonography	98	111	80	103	37	-61	-62.2%	-66	-64.1%
Dietetic Technician	58	67	27	30	0	-58	-100.0%	-30	-100.0%
Drafting (Certificate)	34	6	2	1	0	-34	-100.0%	-1	-100.0%
Electrical Construction Technician	6	22	23	44	60	54	900.0%	16	36.4%
Electrical Electronics Engineering Technology	159	144	75	111	124	-35	-22.0%	13	0.0%
Electronics Repair	11	7	1	0	0	-11	-100.0%	0	0.0%
Emergency Medical Technology	102	186	98	124	122	20	19.6%	-2	-1.6%
English as a Second Language	261	246	195	241	275	14	5.4%	34	14.1%
EST-Biomedical Equip Repair Technology	52	66	35	41	30	-22	-42.3%	-11	-26.8%
EST-Computer Repair Technology	41	54	22	32	37	-4	-9.8%	5	15.6%
EST-Electronics Repair Technology	31	16	4	2	0	-31	-100.0%	-2	-100.0%
Fine Arts	169	140	90	107	128	-41	-24.3%	21	19.6%
Fire Protection Technology	145	125	68	93	82	-63	-43.4%	-11	0.0%
Funeral Service Education	176	163	95	105	96	-80	-45.5%	-9	-8.6%

### Fall Enrollment History 2003-2007 by Program (cont.)

College Wide						Number Change	% Change	Number Change	% Change
	Fall 2003	Fall 2004	Spring 2006	Fall 2006	Fall 2007	2003 to 2007	2003 to 2007	2006 to 2007	2006 to 2007
General Science	331	365	196	221	344	13	3.9%	123	55.7%
General Studies	2,009	1,894	1182	1,353	1,595	-414	-20.6%	242	17.9%
Health Information Technology	196	166	81	163	69	-127	-64.8%	-94	-57.7%
Homeland Security					1	N/A	N/A	N/A	N/A
Horticulture	58	59	35	41	58	0	0.0%	17	41.5%
Hospitality Management	83	96	50	58	68	-15	-18.1%	10	17.2%
Interior Design	203	188	102	124	130	-73	-36.0%	6	4.8%
Legal Secretary	90	80	36	42	39	-51	-56.7%	-3	-7.1%
Machine Tool Technology	13	15	0	2	0	-13	-100.0%	-2	-100.0%
Management	249	272	164	197	237	-12	-4.8%	40	0.0%
Manufacturing	3	2	2	0	0	-3	-100.0%	0	0.0%
Massage Therapy	7	28	30	38	50	43	614.3%	12	0.0%
Medical Coding		40	64	71	103	N/A	N/A	32	45.1%
Medical Laboratory Technician	160	160	79	75	91	-69	-43.1%	16	0.0%
Motor Vehicle Technology	175	268	142	172	197	22	12.6%	25	0.0%
Music	135	140	53	79	93	-42	-31.1%	14	0.0%
Nuclear Medicine Technology	36	43	28	36	31	-5	-13.9%	-5	0.0%
Nursing	646	784	619	788	776	130	20.1%	-12	0.0%
Occupational Therapy Assistant	52	72	28	38	46	-6	-11.5%	8	0.0%
Ophthalmic Medical Assistant	16	11	4	6	16	0	0.0%	10	0.0%
Pastry Assistant-Certificate		9	5	5	3	N/A	N/A	-2	-40.0%
Performance & Media Arts	196	213	118	117	165	-31	-15.8%	48	0.0%
Pharmacy Technician	229	266	114	135	140	-89	-38.9%	5	0.0%
Physical Therapist Assisting	302	303	210	250	249	-53	-17.5%	-1	0.0%
Practical Nursing	231	225	119	176	164	-67	-29.0%	-12	0.0%
Pre-Nursing	3,053	3,256	2150	2,504	2,685	-368	-12.1%	181	0.0%
Radiation Therapy-Certificate	3	10	15	19	26	23	766.7%	7	0.0%
Radiologic Technology	1,359	1,202	706	805	844	-515	-37.9%	39	0.0%
Real Estate Agent				4	6	N/A	N/A	N/A	N/A
Respiratory Care Technology	173	171	103	109	154	-19	-11.0%	45	0.0%
Safety & Health Technology	29	31	32	23	25	-4	-13.8%	2	0.0%
Surgical Technology	237	248	123	127	177	-60	-25.3%	50	0.0%
Teaching Grades 1-5					68	N/A	N/A	N/A	N/A
Veterinary Technology			31	62	101	N/A	N/A	39	0.0%
Visual Communications	209	183	101	122	150	-59	-28.2%	28	0.0%
Web Site Developer				5	17	N/A	N/A	12	240.0%
Welding Technology	0	0	0	0	0	0	0.0%	0	0.0%
Workforce	0	0	0	1	0	0	0.0%	-1	0.0%
<b>Total</b>	<b>16,500</b>	<b>16,669</b>	<b>10,001</b>	<b>11,916</b>	<b>13,211</b>	<b>-3,289</b>	<b>-19.9%</b>	<b>1,295</b>	<b>0.0%</b>

\*Formerly Early Childhood Education \*\* Culinary Management

### Fall Enrollment History 2003-2007 by Campus

City Park Campus						Number Change	% Change	Number Change	% Change
	Fall 2003	Fall 2004	Spring 2006	Fall 2006	Fall 2007	2003 to 2007	2003 to 2007	2006 to 2007	2006 to 2007
Accounting	340	377	164	199	244	-96	-28.2%	45	22.6%
Administrative Office Technology	98	94	53	56	54	-44	-44.9%	-2	-3.6%
Air Conditioning & Refrigeration	9	2	1	1	0	-9	-100.0%	-1	-100.0%
American Sign Language Interpreting	53	46	20	24	29	-24	-45.3%	5	20.8%
American Sign Language Studies	30	29	10	20	15	-15	-50.0%	-5	-25.0%
Business Administration	713	778	393	575	692	-21	-2.9%	117	20.3%
Business Training	4	1	0	0	0	-4	-100.0%	0	0.0%
CADD (Drafting-ITMF)	50	69	39	60	89	39	78.0%	29	48.3%
Care & Development of Young Children	524	544	230	254	204	-320	-61.1%	-50	-19.7%

City Park Campus, continued						Number Change	% Change	Number Change	% Change
	Fall 2003	Fall 2004	Spring 2006	Fall 2006	Fall 2007	2003 to 2007	2003 to 2007	2006 to 2007	2006 to 2007
Carpentry	19	7	1	1	0	-19	-100.0%	-1	-100.0%
Certified Nurse Assistant	0	0	0	1	0	0	0.0%	-1	0.0%
CET-Architectural Technology	96	110	66	72	93	-3	-3.1%	21	29.2%
CET-Civil Construction Technology	50	43	18	21	32	-18	-36.0%	11	52.4%
CET-Construction Management	28	37	18	26	36	8	28.6%	10	38.5%
Computer Information Technology	426	327	148	146	155	-271	-63.6%	9	6.2%
Computer Network Technology	215	183	107	96	86	-129	-60.0%	-10	-10.4%
Computer Repair	30	36	8	17	28	-2	-6.7%	11	64.7%
Construction Management	10	19	3			-10	-100.0%	N/A	N/A
Criminal Justice	392	377	202	231	240	-152	-38.8%	9	3.9%
Culinary Arts	202	197	107	140	175	-27	-13.4%	35	25.0%
Dental Hygiene	8	3	1	0	0	-8	-100.0%	0	0.0%
Dental Laboratory Technology	17	11	0	0	0	-17	-100.0%	0	0.0%
Diagnostic Medical Sonography	80	91	53	71	95	15	18.8%	24	33.8%
Dietetic Technician	47	56	22	24	31	-16	-34.0%	7	29.2%
Drafting (Certificate)	27	4	1	0	0	-27	-100.0%	0	0.0%
Electrical Construction Technician	5	21	21	41	54	49	980.0%	13	31.7%
Electrical Electronics Engineering Technology	138	121	58	94	97	-41	-29.7%	3	3.2%
Electronics Repair	10	7	1	0	0	-10	-100.0%	0	0.0%
Emergency Medical Technology	86	156	86	90	96	10	11.6%	6	6.7%
English as a Second Language	260	244	195	241	273	13	5.0%	32	13.3%
EST-Biomedical Equip Repair Technology	49	60	31	36	26	-23	-46.9%	-10	-27.8%
EST-Computer Repair Technology	32	42	10	24	27	-5	-15.6%	3	12.5%
EST-Electronics Repair Technology	25	14	4	2	0	-25	-100.0%	-2	-100.0%
Fine Arts	119	98	49	60	78	-41	-34.5%	18	30.0%
Fire Protection Technology	135	79	63	83	52	-83	-61.5%	-31	-37.3%
Culinary Management**	16	4	0	0	0	-16	-100.0%	0	0.0%
Funeral Service Education	159	141	74	80	74	-85	-53.5%	-6	-7.5%
General Science	259	260	128	139	210	-49	-18.9%	71	51.1%
General Studies	1,325	1,281	638	757	910	-415	-31.3%	153	20.2%
Health Information Technology	169	128	70	76	53	-116	-68.6%	-23	-30.3%
Homeland Security					0	N/A	N/A	N/A	N/A
Horticulture	55	56	34	40	46	-9	-16.4%	6	15.0%
Hospitality Management	78	88	47	54	63	-15	-19.2%	9	16.7%
Interior Design	184	164	81	103	105	-79	-42.9%	2	1.9%
Legal Secretary	63	60	26	26	31	-32	-50.8%	5	19.2%
Machine Tool Technology	12	15	0	2	0	-12	-100.0%	-2	0.0%
Management	172	196	99	138	168	-4	-2.3%	30	21.7%
Manufacturing	3	2	2	0	0	-3	-100.0%	0	0.0%
Massage Therapy	1	0	5	4	5	4	400.0%	1	25.0%
Medical Coding		36	47	51	77	N/A	N/A	26	51.0%
Medical Laboratory Technician	133	121	51	51	68	-65	-48.9%	17	33.3%
Motor Vehicle Technology	167	251	129	161	177	10	6.0%	16	9.9%
Music	123	129	40	67	77	-46	-37.4%	10	14.9%
Nuclear Medicine Technology	31	32	16	26	22	-9	-29.0%	-4	-15.4%
Nursing	0	0	0	0	0	0	0.0%	0	0.0%
Occupational Therapy Assistant	37	58	24	30	35	-2	-5.4%	5	16.7%
Ophthalmic Medical Assistant	13	10	4	5	15	2	15.4%	10	200.0%
Pastry Assistant		9	5	5	3	N/A	N/A	-2	-40.0%
Performance & Media Arts	159	176	88	83	122	-37	-23.3%	39	47.0%
Pharmacy Technician	175	197	69	85	91	-84	-48.0%	6	7.1%
Physical Therapist Assisting	230	225	133	160	146	-84	-36.5%	-14	-8.8%
Practical Nursing	107	89	32	45	50	-57	-53.3%	5	11.1%
Pre-Nursing	2,067	2,067	1,171	1,362	1,496	-571	-27.6%	134	9.8%
Radiation Therapy-Certificate	3	10	12	13	17	N/A	N/A	4	30.8%
Radiologic Technology	977	805	426	488	509	-468	-47.9%	21	4.3%
Real Estate Agent				4	6	N/A	N/A	N/A	N/A
Respiratory Care Technology	137	127	67	74	100	-37	-27.0%	26	35.1%

City Park Campus, continued					
	Fall 2003	Fall 2004	Spring 2006	Fall 2006	Fall 2007
Safety & Health Technology	28	29	27	22	21
Surgical Technology	178	182	88	82	107
Teaching Grades 1-5					34
Veterinary Technology			28	45	66
Visual Communications	167	155	82	90	107
Web Site Developer				3	13
Welding Technology	0	0	0	0	0
Workforce	0	0	0	1	0
<b>Total</b>	<b>11,555</b>	<b>11,386</b>	<b>5,926</b>	<b>7,078</b>	<b>8,025</b>

Number Change	% Change
2003 to 2007	2003 to 2007
-7	-25.0%
-71	-39.9%
N/A	N/A
N/A	N/A
-60	-35.9%
N/A	N/A
0	0.0%
0	0.0%
-3,530	-30.5%

Number Change	% Change
2006 to 2007	2006 to 2007
-1	-4.5%
25	30.5%
N/A	N/A
21	46.7%
17	18.9%
10	333.3%
0	0.0%
-1	0.0%
947	13.4%

West Bank Campus					
	Fall 2003	Fall 2004	Spring 2006	Fall 2006	Fall 2007
Accounting	113	100	71	79	111
Administrative Office Technology*	38	28	25	26	21
Air Conditioning & Refrigeration	0	0	0	0	0
American Sign Language Interpreting	6	7	6	8	7
American Sign Language Studies	5	4	7	8	3
Business Administration	217	225	187	184	197
Business Training	1	1	0	0	0
CADD (Drafting-ITMF)	11	18	22	20	25
Care & Development of Young Children*	226	223	122	119	98
Carpentry	1	0	0	0	0
Certified Nurse Assistant	0	0	0	0	0
CET-Architectural Technology	9	17	15	24	18
CET-Civil Construction Technology	12	6	3	7	5
CET-Construction Management	3	4	5	7	8
Computer Information Technology	119	82	43	49	57
Computer Network Technology	45	21	16	19	12
Computer Repair	6	1	5	2	2
Construction Management	5	1	0	0	0
Criminal Justice	150	126	131	113	113
Culinary Arts	15	13	7	10	22
Culinary Management**	1	0	0	0	0
Dental Hygiene	14	3	3	2	0
Dental Laboratory Technology	1	2	0	0	0
Diagnostic Medical Sonography	12	9	13	17	16
Dietetic Technician	6	7	5	2	4
Drafting (Certificate)	7	2	1	1	0
Electrical Construction Technician	1	1	2	3	5
Electrical Electronics Engineering Technology	14	15	16	15	22
Electronics Repair	1	0	0	0	0
Emergency Medical Technology	4	25	9	28	17
English as a Second Language	0	1	0	0	1
EST-Biomedical Equip Repair Technology	2	1	1	2	1
EST-Computer Repair Technology	8	8	9	7	6
EST-Electronics Repair Technology	5	2	0	0	0
Fine Arts	43	40	39	41	37
Fire Protection Technology	3	4	1	4	4
Funeral Service Education	13	16	17	18	16
General Science	54	71	59	68	107
General Studies	507	424	391	385	401
Health Information Technology	15	25	10	13	10

Number Change	% Change
2003 to 2007	2003 to 2007
-2	-1.8%
-17	-44.7%
0	0.0%
1	16.7%
-2	-40.0%
-20	-9.2%
-1	-100.0%
14	127.3%
-128	-56.6%
-1	-100.0%
0	0.0%
9	100.0%
-7	-58.3%
5	166.7%
-62	-52.1%
-33	-73.3%
-4	-66.7%
-5	-100.0%
-37	-24.7%
7	46.7%
-1	-100.0%
-14	-100.0%
-1	0.0%
4	33.3%
-2	-33.3%
-7	-100.0%
4	400.0%
8	57.1%
-1	-100.0%
13	325.0%
1	0.0%
-1	-50.0%
-2	-25.0%
-5	-100.0%
-6	-14.0%
1	33.3%
3	23.1%
53	98.1%
-106	-20.9%
-5	-33.3%

Number Change	% Change
2006 to 2007	2006 to 2007
32	40.5%
-5	-19.2%
0	0.0%
-1	-12.5%
-5	-62.5%
13	7.1%
0	0.0%
5	25.0%
-21	-17.6%
0	0.0%
0	0.0%
-6	-25.0%
-2	-28.6%
1	14.3%
8	16.3%
-7	-36.8%
0	0.0%
0	0.0%
0	0.0%
12	120.0%
0	0.0%
-2	-100.0%
0	0.0%
-1	-5.9%
2	100.0%
-1	-100.0%
2	66.7%
7	46.7%
0	0.0%
-11	-39.3%
1	0.0%
-1	-50.0%
-1	-14.3%
0	0.0%
-2	-11.1%
39	57.4%
16	4.2%
-3	-23.1%

West Bank Campus, continued					
	Fall 2003	Fall 2004	Spring 2006	Fall 2006	Fall 2007
Homeland Security					1
Horticulture	2	2	0	0	2
Hospitality Management	4	5	1	4	4
Interior Design	11	16	17	13	14
Legal Secretary	23	17	7	12	7
Machine Tool Technology	1	0	0	0	0
Management	47	54	48	46	49
Manufacturing	0	0	0	0	0
Massage Therapy	6	27	24	32	45
Medical Coding		1	11	12	17
Medical Laboratory Technician	24	22	21	16	15
Motor Vehicle Technology	7	13	11	9	15
Music	7	10	8	6	11
Nuclear Medicine Technology	2	6	4	2	4
Nursing	0	0	0	0	0
Occupational Therapy Assistant	9	9	3	5	5
Ophthalmic Medical Assistant	1	1	0	1	0
Pastry Assistant		0	0	0	0
Performance & Media Arts	28	28	20	24	28
Pharmacy Technician	37	55	37	40	40
Physical Therapist Assisting	52	55	50	59	70
Practical Nursing	46	35	34	37	34
Pre-Nursing	676	760	620	768	801
Radiation Therapy-Certificate	0	0	2	5	6
Radiologic Technology	218	208	153	180	190
Real Estate Agent					0
Respiratory Care Technology	27	30	18	26	33
Safety & Health Technology	1	1	4	1	2
Surgical Technology	33	36	24	27	37
Teaching Grades 1-5					21
Veterinary Technology			1	10	17
Visual Communications	31	21	10	15	26
Web Site Design				1	2
Welding Technology	0	0	0	0	0
Workforce	0	0	0	0	0
<b>Total</b>	<b>2,986</b>	<b>2,945</b>	<b>2,369</b>	<b>2,632</b>	<b>2,842</b>

Number Change 2003 to 2007	% Change 2003 to 2007
N/A	N/A
0	0.0%
0	0.0%
3	27.3%
-16	-69.6%
-1	-100.0%
2	4.3%
0	0.0%
N/A	N/A
N/A	N/A
-9	-37.5%
8	114.3%
4	57.1%
2	100.0%
0	0.0%
-4	-44.4%
-1	-100.0%
N/A	N/A
0	0.0%
3	8.1%
18	34.6%
-12	-26.1%
125	18.5%
N/A	N/A
-28	-12.8%
N/A	N/A
6	22.2%
1	100.0%
4	12.1%
N/A	N/A
N/A	N/A
-5	-16.1%
N/A	N/A
0	0.0%
0	0.0%
-144	-4.8%

Number Change 2006 to 2007	% Change 2006 to 2007
N/A	N/A
2	0.0%
0	0.0%
1	7.7%
-5	-41.7%
0	0.0%
3	6.5%
0	0.0%
13	40.6%
5	41.7%
-1	-6.3%
6	66.7%
5	83.3%
2	100.0%
0	0.0%
0	0.0%
4	16.7%
0	0.0%
11	18.6%
-3	-8.1%
33	4.3%
1	20.0%
10	5.6%
N/A	N/A
7	26.9%
1	100.0%
10	37.0%
N/A	N/A
7	70.0%
11	73.3%
N/A	N/A
0	0.0%
0	0.0%
210	8.0%

Charity Campus					
	Fall 2003	Fall 2004	Spring 2006	Fall 2006	Fall 2007
Certified Nurse Assistant	7	0	0	0	0
Nursing	646	785	619	788	776
Practical Nursing	69	75	39	80	68
<b>Total</b>	<b>722</b>	<b>860</b>	<b>658</b>	<b>868</b>	<b>844</b>

Number Change 2003 to 2007	% Change 2003 to 2007
-7	-100.0%
130	20.1%
-1	-1.4%
122	16.9%

Number Change 2006 to 2007	% Change 2006 to 2007
0	0.0%
-12	-1.5%
-12	-15.0%
-24	-2.8%

Northshore Site					
	Fall 2003	Fall 2004	Spring 2006	Fall 2006	Fall 2007
Accounting	48	41	19	32	37
Administrative Office Technology*	9	8	7	8	3
Air Conditioning & Refrigeration	0	0	0	0	0
American Sign Language Interpreting	4	4	2	4	4

Number Change 2003 to 2007	% Change 2003 to 2007
-11	-22.9%
-6	-66.7%
0	0.0%
0	0.0%

Number Change 2006 to 2007	% Change 2006 to 2007
5	15.6%
-5	-62.5%
0	0.0%
0	0.0%



Northshore Site						Number Change	% Change	Number Change	% Change
	Fall 2003	Fall 2004	Spring 2006	Fall 2006	Fall 2007	2003 to 2007	2003 to 2007	2006 to 2007	2006 to 2007
American Sign Language Studies	8	3	1	1	1	-7	-87.5%	0	0.0%
Business Administration	94	106	61	94	125	31	33.0%	31	33.0%
Business Training	1	1	0	0	0	-1	-100.0%	0	0.0%
CADD (Drafting-ITMF)	4	6	2	7	7	3	75.0%	0	0.0%
Carpentry	0	0	0	0	0	0	0.0%	0	0.0%
Certified Nurse Assistant	0	0	0	0	0	0	0.0%	0	0.0%
CET-Architectural Technology	5	4	9	10	5	0	0.0%	-5	-50.0%
CET-Civil Construction Technology	6	3	1	2	1	-5	-83.3%	-1	-50.0%
CET-Construction Management	2	1	2	5	6	4	200.0%	1	20.0%
Computer Information Technology	27	23	12	21	14	-13	-48.1%	-7	-33.3%
Computer Network Technology	18	7	8	5	6	-12	-66.7%	1	20.0%
Computer Repair	2	2	0	1	3	1	50.0%	2	0.0%
Construction Management	2	0	0	0	0	-2	-100.0%	0	0.0%
Care & Development of Young Children *	64	78	51	67	40	-24	-37.5%	-27	-40.3%
Criminal Justice	37	40	28	33	41	4	10.8%	8	24.2%
Culinary Arts	2	8	3	7	9	7	350.0%	2	28.6%
Dental Hygiene	0	0	0	0	0	0	0.0%	0	0.0%
Dental Laboratory Technology	6	5	1	0	0	-6	-100.0%	0	0.0%
Diagnostic Medical Sonography	6	11	14	15	18	12	200.0%	3	20.0%
Dietetic Technician	5	4	0	4	2	-3	-60.0%	-2	0.0%
Drafting (Certificate)	0	0	0	0	0	0	0.0%	0	0.0%
Electrical Construction Technician	0	0	0	0	1	1	0.0%	1	0.0%
Electrical Electronics Engineering Technology	7	8	1	2	5	-2	-28.6%	3	150.0%
Electronics Repair	0	0	0	0	0	0	0.0%	0	0.0%
Emergency Medical Technology	12	5	3	6	9	-3	-25.0%	3	50.0%
English as a Second Language	1	1	0	0	1	0	0.0%	1	0.0%
EST-Biomedical Equip Repair Technology	1	5	3	3	3	2	200.0%	0	0.0%
EST-Computer Repair Technology	1	4	3	1	4	3	300.0%	3	300.0%
EST-Electronics Repair Technology	1	0	0	0	0	-1	-100.0%	0	0.0%
Fine Arts	7	2	2	6	13	6	85.7%	7	116.7%
Fire Protection Technology	7	42	4	6	26	19	271.4%	20	333.3%
Food Service Careers	0	0	0		0	0	0.0%	0	0.0%
Funeral Service Education	4	6	4	7	6	2	50.0%	-1	-14.3%
General Science	18	33	9	14	27	9	50.0%	13	92.9%
General Studies	177	189	153	211	284	107	60.5%	73	34.6%
Health Information Technology	12	13	1	74	6	-6	-50.0%	-68	-91.9%
Horticulture	1	1	1	1	10	9	900.0%	9	900.0%
Hospitality Management	1	3	2	0	1	0	0.0%	1	0.0%
Interior Design	8	8	4	8	11	3	37.5%	3	37.5%
Legal Secretary	4	3	3	4	1	-3	-75.0%	-3	-75.0%
Machine Tool Technology	0	0	0	0	0	0	0.0%	0	0.0%
Management	30	22	17	13	20	-10	-33.3%	7	53.8%
Manufacturing	0	0	0	0	0	0	0.0%	0	0.0%
Massage Therapy	0	1	1	2	0	0	0.0%	-2	-100.0%
Medical Coding	////	3	6	8	9	N/A	N/A	1	12.5%
Medical Laboratory Technician	3	17	7	8	8	5	166.7%	0	0.0%
Motor Vehicle Technology	1	4	2	2	5	4	400.0%	3	150.0%
Music	5	1	5	6	5	0	0.0%	-1	-16.7%
Nuclear Medicine Technology	3	5	8	8	5	2	66.7%	-3	-37.5%
Nursing	0	0	0	0	0	0	0.0%	0	0.0%
Occupational Therapy Assistant	6	5	1	3	6	0	0.0%	3	100.0%
Ophthalmic Medical Assistant	2	0	0	0	1	-1	-50.0%	1	0.0%
Pastry Assistant	////	0	0	0	0	N/A	N/A	0	0.0%
Performance & Media Arts	9	9	10	10	15	6	66.7%	5	50.0%
Pharmacy Technician	17	14	8	10	9	-8	-47.1%	-1	-10.0%
Physical Therapist Assisting	20	23	27	31	33	13	65.0%	2	6.5%
Practical Nursing	9	26	14	14	12	3	33.3%	-2	-14.3%

Northshore Site					
	Fall 2003	Fall 2004	Spring 2006	Fall 2006	Fall 2007
Pre-Nursing	310	429	359	374	388
Radiation Therapy-Certificate	0	0	1	1	3
Radiologic Technology	164	189	127	137	145
Real Estate Agent					0
Respiratory Care Technology	9	14	18	9	21
Safety & Health Technology	0	1	1	0	2
Surgical Technology	26	30	11	18	33
Teaching Grades 1-5					13
Veterinary Technology			2	7	18
Visual Communications	11	7	9	17	17
Web Site Design				1	2
Welding Technology	0	0	0	0	0
Workforce	0	0	0	0	0
<b>Total</b>	<b>1,237</b>	<b>1,478</b>	<b>1,048</b>	<b>1,338</b>	<b>1,500</b>

Number Change 2003 to 2007	% Change 2003 to 2007
78	25.2%
3	0.0%
-19	-11.6%
N/A	N/A
12	133.3%
2	0.0%
7	26.9%
N/A	N/A
N/A	N/A
6	54.5%
N/A	N/A
0	0.0%
0	0.0%
<b>263</b>	<b>21.3%</b>

Number Change 2006 to 2007	% Change 2006 to 2007
14	3.7%
2	200.0%
8	5.8%
N/A	N/A
12	133.3%
2	0.0%
15	83.3%
N/A	N/A
11	157.1%
0	0.0%
1	0.0%
0	0.0%
0	0.0%
<b>162</b>	<b>12.1%</b>

**Fall Enrollment History 2003-2007 by Program  
Ranked by Student Total**

College Wide					
	Fall 2003	Fall 2004	Spring 2006	Fall 2006	Fall 2007
Pre-Nursing	3,053	3,256	2150	2,504	2,685
General Studies	2,009	1,894	1182	1,353	1,595
Business Administration	1,024	1,109	641	853	1,014
Radiologic Technology	1,359	1,202	706	805	844
Nursing	646	784	619	788	776
Criminal Justice	579	543	361	377	394
Accounting	501	518	254	310	392
General Science	331	365	196	221	344
Care & Development of Young Children	814	845	403	440	342
English as a Second Language	261	246	195	241	275
Physical Therapist Assisting	302	303	210	250	249
Management	249	272	164	197	237
Computer Information Technology	572	432	203	216	226
Culinary Arts	219	218	117	157	206
Motor Vehicle Technology	175	268	142	172	197
Surgical Technology	237	248	123	127	177
Performance & Media Arts	196	213	118	117	165
Practical Nursing	231	225	119	176	164
Respiratory Care Technology	173	171	103	109	154
Visual Communications	209	183	101	122	150
Pharmacy Technician	229	266	114	135	140
Interior Design	203	188	102	124	130
Dental Laboratory Technology	24	18	1	0	129
Fine Arts	169	140	90	107	128
Electrical Electronics Engineering Technology	159	144	75	111	124
Emergency Medical Technology	102	186	98	124	122
CADD (Drafting-ITMF)	65	93	63	87	121
CET-Architectural Technology	110	131	90	106	116
Computer Network Technology	278	211	131	120	104
Medical Coding		40	64	71	103
Veterinary Technology			31	62	101
Funeral Service Education	176	163	95	105	96
Music	135	140	53	79	93
Medical Laboratory Technician	160	160	79	75	91
Fire Protection Technology	145	125	68	93	82
Administrative Office Technology*	145	130	85	90	78
Health Information Technology	196	166	81	163	69
Hospitality Management	83	96	50	58	68

Number Change 2003 to 2007	% Change 2003 to 2007
-368	-12.1%
-414	-20.6%
-10	-1.0%
-515	-37.9%
130	20.1%
-185	-32.0%
-109	-21.8%
13	3.9%
-472	-58.0%
14	5.4%
-53	-17.5%
-12	-4.8%
-346	-60.5%
-13	-5.9%
22	12.6%
-60	-25.3%
-31	-15.8%
-67	-29.0%
-19	-11.0%
-59	-28.2%
-89	-38.9%
-73	-36.0%
105	437.5%
-41	-24.3%
-35	-22.0%
20	19.6%
56	86.2%
6	5.5%
-174	-62.6%
N/A	N/A
N/A	N/A
-80	-45.5%
-42	-31.1%
-69	-43.1%
-63	-43.4%
-67	0.0%
-127	0.0%
-15	-18.1%

Number Change 2006 to 2007	% Change 2006 to 2007
181	7.2%
242	17.9%
161	18.9%
39	4.8%
-12	-1.5%
17	4.5%
82	26.5%
123	55.7%
-98	-22.3%
34	14.1%
-1	-0.4%
40	20.3%
10	4.6%
49	31.2%
25	14.5%
50	39.4%
48	41.0%
-12	-6.8%
45	41.3%
28	23.0%
5	3.7%
6	4.8%
129	0.0%
21	19.6%
13	11.7%
-2	-1.6%
34	39.1%
10	9.4%
-16	-13.3%
32	45.1%
39	62.9%
-9	-8.6%
14	17.7%
16	21.3%
-11	-11.8%
-12	-13.3%
-94	-57.7%
10	17.2%

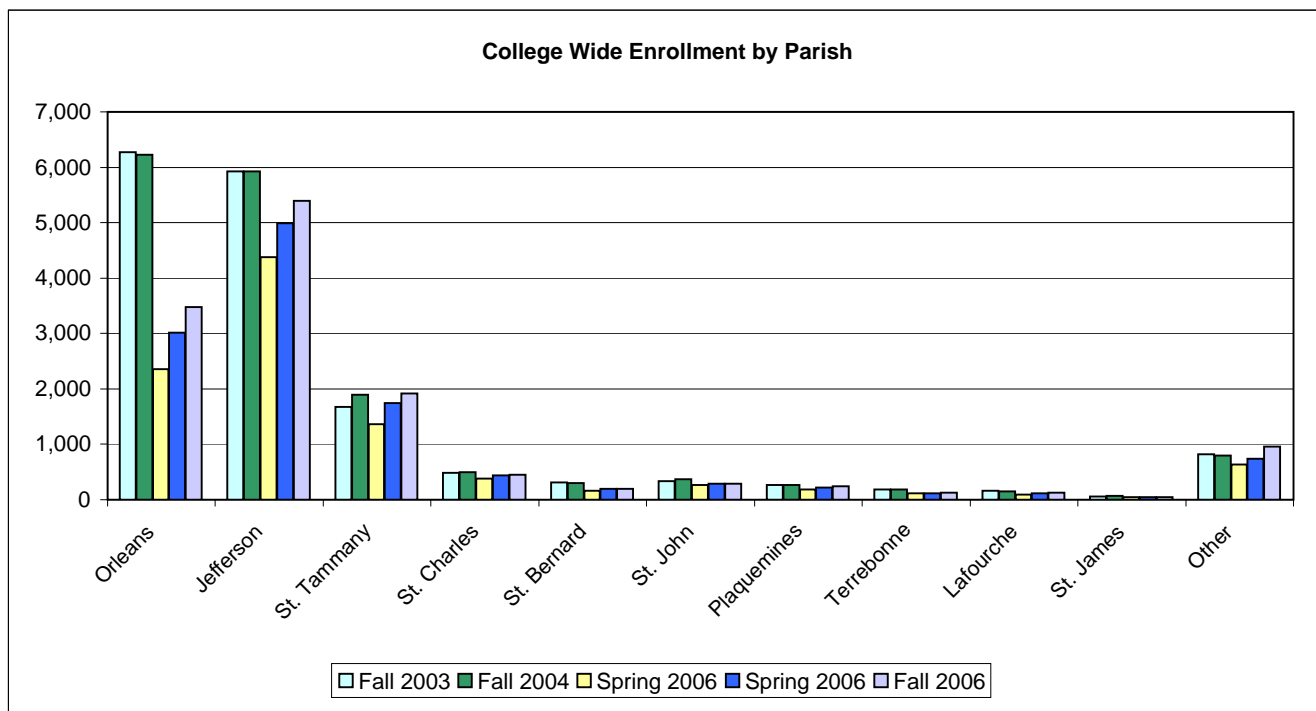


### Fall Enrollment History 2003-2007 by Parish

College Wide					
	Fall 2003	Fall 2004	Spring 2006	Fall 2006	Fall 2007
Orleans	6,278	6,224	2362	3,017	3,479
Jefferson	5,925	5,925	4382	4,989	5,392
St. Tammany	1,671	1,889	1362	1,741	1,915
St. Charles	487	495	380	441	446
St. Bernard	316	296	166	201	197
St. John	334	370	266	292	289
Plaquemines	262	270	188	216	238
Terrebonne	189	183	118	114	130
Lafourche	160	155	95	116	123
St. James	62	64	49	49	41
Other	816	798	633	740	961
<b>Total</b>	<b>16,500</b>	<b>16,669</b>	<b>10,001</b>	<b>11,916</b>	<b>13,211</b>

Number Change	% Change
2003 to 2007	2003 to 2007
-2,799	-44.6%
-533	-9.0%
244	14.6%
-41	-8.4%
-119	-37.7%
-45	-13.5%
-24	-9.2%
-59	-31.2%
-37	-23.1%
-21	-33.9%
145	17.8%
<b>-3,289</b>	<b>-19.9%</b>

Number Change	% Change
2006 to 2007	2006 to 2007
462	15.3%
403	8.1%
174	10.0%
5	1.1%
-4	-2.0%
-3	-1.0%
22	10.2%
16	14.0%
7	6.0%
-8	-16.3%
221	29.9%
<b>1,295</b>	<b>10.9%</b>



### Fall Enrollment History 2003-2007 by Parish

City Park					
	Fall 2003	Fall 2004	Spring 2006	Fall 2006	Fall 2007
Orleans	5,322	5,179	1644	2,187	2,592
Jefferson	3,700	3,727	2581	2,931	3,261
St. Tammany	449	467	417	507	572
St. Charles	440	446	315	353	367
St. Bernard	255	236	102	135	138
St. John	314	346	242	264	254
Plaquemines	64	71	51	60	66
Terrebonne	170	162	98	90	97
Lafourche	143	133	84	96	100
St. James	61	61	45	43	34
Other	637	558	347	412	544
<b>Total</b>	<b>11,555</b>	<b>11,386</b>	<b>5,926</b>	<b>7,078</b>	<b>8,025</b>

Number Change	% Change
2003 to 2007	2003 to 2007
-2,730	-51.3%
-439	-11.9%
123	27.4%
-73	-16.6%
-117	-45.9%
-60	-19.1%
2	3.1%
-73	-42.9%
-43	-30.1%
-27	-44.3%
-93	-14.6%
<b>-3,530</b>	<b>-30.5%</b>

Number Change	% Change
2006 to 2007	2006 to 2007
405	18.5%
330	11.3%
65	12.8%
14	4.0%
3	2.2%
-10	-3.8%
6	10.0%
7	7.8%
4	4.2%
-9	-20.9%
132	32.0%
<b>947</b>	<b>13.4%</b>

### Fall Enrollment History 2003-2007 by Parish

<b>West Bank</b>					
Orleans	706	759	543	607	691
Jefferson	1,940	1,846	1527	1,697	1,753
St. Tammany	5	15	20	24	41
St. Charles	30	26	41	48	33
St. Bernard	11	10	13	8	7
St. John	5	6	11	13	14
Plaquemines	187	183	118	128	156
Terrebonne	14	13	13	9	17
Lafourche	8	15	9	16	14
St. James	1	1	1	1	2
Other	79	71	73	81	114
<b>Total</b>	<b>2,986</b>	<b>2,945</b>	<b>2,369</b>	<b>2,632</b>	<b>2,842</b>

	-15	-2.1%
	-187	-9.6%
	36	720.0%
	3	10.0%
	-4	-36.4%
	9	180.0%
	-31	-16.6%
	3	21.4%
	6	75.0%
	1	0.0%
	35	44.3%
	-144	-4.8%

	84	13.8%
	56	3.3%
	17	70.8%
	-15	-31.3%
	-1	-12.5%
	1	7.7%
	28	21.9%
	8	88.9%
	-2	-12.5%
	1	100.0%
	33	40.7%
	<b>210</b>	<b>8.0%</b>

<b>Charity School of Nursing</b>					
Orleans	239	267	153	195	181
Jefferson	278	333	258	342	349
St. Tammany	89	116	113	139	128
St. Charles	17	20	22	38	45
St. Bernard	49	47	45	50	45
St. John	15	16	13	14	19
Plaquemines	11	16	18	26	13
Terrebonne	3	6	7	14	15
Lafourche	7	6	1	4	9
St. James	0	2	3	5	5
Other	14	31	25	41	35
<b>Total</b>	<b>722</b>	<b>860</b>	<b>658</b>	<b>868</b>	<b>844</b>

	-58	-24.3%
	71	25.5%
	39	43.8%
	28	164.7%
	-4	-8.2%
	4	26.7%
	2	18.2%
	12	400.0%
	2	28.6%
	5	0.0%
	21	150.0%
	<b>122</b>	<b>16.9%</b>

	-14	-7.2%
	7	2.0%
	-11	-7.9%
	7	18.4%
	-5	-10.0%
	5	35.7%
	-13	-50.0%
	1	7.1%
	5	125.0%
	0	0.0%
	-6	-14.6%
	<b>-24</b>	<b>-2.8%</b>

<b>Slidell/Northshore</b>					
Orleans	11	19	22	23	15
Jefferson	7	19	16	19	25
St. Tammany	1,128	1,291	812	1,067	1,174
St. Charles	1	3	2	2	1
St. Bernard	1	3	6	8	7
St. John	0	2	0	1	2
Plaquemines	0	0	1	2	3
Tangemphoa	32	62	84	107	131
Terrebonne	2	2	0	1	1
Lafourche	2	1	1	0	0
St. James	0	0	0	0	0
Washington	31	47	76	69	97
Other	22	29	28	39	44
<b>Total</b>	<b>1,237</b>	<b>1,478</b>	<b>1,048</b>	<b>1,338</b>	<b>1,500</b>

	-4	-21.1%
	6	31.6%
	-117	-9.1%
	-2	-66.7%
	4	133.3%
	0	0.0%
	3	0.0%
	69	111.3%
	-1	-50.0%
	-1	-100.0%
	0	0.0%
	50	106.4%
	15	51.7%
	<b>22</b>	<b>1.5%</b>

	-8	-34.8%
	6	31.6%
	107	10.0%
	-1	-50.0%
	-1	-12.5%
	1	0.0%
	1	50.0%
	24	22.4%
	0	0.0%
	0	0.0%
	0	0.0%
	28	40.6%
	5	12.8%
	<b>162</b>	<b>12.1%</b>

## Fall Enrollment History 2003-2007 by Top "Feeder" High Schools

College Wide						Number Change	% Change	Number Change	% Change
	Fall 2003	Fall 2004	Spring 2006	Fall 2006	Fall 2007	2003 to 2007	2003 to 2007	2006 to 2007	2006 to 2007
<b>TOTAL First Time Freshman</b>	<b>2,309</b>	<b>2,941</b>	<b>1,546</b>	<b>1,977</b>	<b>2,365</b>	<b>56</b>	<b>2.4%</b>	<b>388</b>	<b>19.6%</b>
Alcee Fortier	25	34	7	5	12	-13	-52.0%	7	140.0%
Alfred T. Bonnabel	51	74	54	59	47	-4	-7.8%	-12	-20.3%
Archbishop Blenk	9	10	12	12	11	2	22.2%	-1	-8.3%
Archbishop Chapelle	24	19	18	21	27	3	12.5%	6	28.6%
Archbishop Rummel	10	37	20	31	29	19	190.0%	-2	-6.5%
Archbishop Shaw	10	18	30	17	23	13	130.0%	6	35.3%
Belle Chasse	32	28	19	31	32	0	0.0%	1	3.2%
Brother Martin	8	12	7	17	14	6	75.0%	-3	-17.6%
Chalmette	6	11	4	14	16	10	166.7%	2	14.3%
Covington	30	32	27	29	35	5	16.7%	6	20.7%
De la Salle	19	20	17	25	18	-1	-5.3%	-7	-28.0%
Destrehan	30	38	36	31	47	17	56.7%	16	51.6%
East Jefferson	36	47	23	50	45	9	25.0%	-5	-10.0%
East Saint John	12	16	19	17	26	14	116.7%	9	52.9%
Ecole Classique	0	13	6	8	8	8	0.0%	0	0.0%
Edna Karr Magnet	17	9	12	9	22	5	29.4%	13	144.4%
Fisher Middle	10	16	17	20	14	4	40.0%	-6	-30.0%
Fountainbleau	13	24	18	32	34	21	161.5%	2	6.3%
Grace King	32	60	35	45	59	27	84.4%	14	31.1%
Hahnville	17	35	19	33	30	13	76.5%	-3	-9.1%
Hammond High	3	4	5	12	13	10	333.3%	1	8.3%
Helen Cox	0	4	0	0	25	25	0.0%	25	0.0%
Holy Cross	9	15	5	7	14	5	55.6%	7	100.0%
Immaculata	6	12	18	16	29	23	383.3%	13	81.3%
John Curtis Christian					8	8	0.0%	8	0.0%
John Ehret	69	88	71	103	97	28	40.6%	-6	-5.8%
John F. Kennedy Senior	89	90	8	16	12	-77	-86.5%	-4	-25.0%
John McDonogh Senior	45	52	6	11	28	-17	-37.8%	17	154.5%
J.S. Clark Senior	27	30	7	4	12	-15	-55.6%	8	200.0%
L.E. Rabouin Voc	41	52	11	13	19	-22	-53.7%	6	46.2%
L.W. Higgins	58	61	59	65	76	18	31.0%	11	16.9%
Mandeville	12	11	7	26	24	12	100.0%	-2	-7.7%
Marion Abramson	50	71	15	25	12	-38	-76.0%	-13	-52.0%
Mc Donogh 35 Senior	19	27	13	26	26	7	36.8%	0	0.0%
McMain Magnet	7	13	7	14	24	17	242.9%	10	71.4%
Northshore	23	28	28	33	31	8	34.8%	-2	-6.1%
O.Perry Walker Senior	28	41	36	22	46	18	64.3%	24	109.1%
Pearl River	13	19	6	13	22	9	69.2%	9	69.2%
Pine High School	3	2	1	3	9	6	200.0%	6	200.0%
Riverdale	29	27	17	34	44	15	0.0%	10	29.4%
St. Mary's Academy	11	15	4	3	12	1	9.1%	9	300.0%
Salmen	21	39	19	20	30	9	42.9%	10	50.0%
Sarah Reed	52	54	9	17	18	-34	-65.4%	1	5.9%
Slidell	52	49	40	38	61	9	17.3%	23	60.5%
South Lafourche	6	10	4	9	9	3	50.0%	0	0.0%
St. Augustine	8	17	5	17	25	17	212.5%	8	47.1%
Walter L. Cohen	20	27	9	10	11	-9	-45.0%	1	10.0%
Warren Easton Fundamental	49	57	14	18	40	-9	-18.4%	22	122.2%
West Jefferson	53	73	64	67	78	25	47.2%	11	16.4%
Xavier Preparatory	13	13	2	13	9	-4	-30.8%	-4	-30.8%
Unknown	279	306	71	103	156	-123	-44.1%	53	51.5%
G.E.D.	256	425	200	220	274	18	7.0%	54	24.5%
Non-High School Grads	38	1	1	1	0	-38	-100.0%	-1	-100.0%
Other	558	712	391	432	522	-36	-6.5%	90	20.8%

### Fall Enrollment History 2003-2007 by Zip Code (zip code order)

College Wide							Number Change	% Change	Number Change	% Change
	Zip Code	Fall 2003	Fall 2004	Spring 2006	Fall 2006	Fall 2007	2003 to 2007	2003 to 2007	2006 to 2007	2006 to 2007
Metairie S of I-10	70001	545	574	357	441	482	-63	-11.6%	41	9.3%
Metairie	70002	249	226	141	174	211	-38	-15.3%	37	21.3%
West Metairie	70003	522	504	354	463	522	0	0.0%	59	12.7%
Old Metairie-Bucktown	70005	256	251	180	227	217	-39	-15.2%	-10	-4.4%
Metairie Clearview N of I-10	70006	204	199	124	151	173	-31	-15.2%	22	14.6%
Belle Chasse	70037	187	137	147	178	190	3	1.6%	12	6.7%
Chalmette	70043	143	142	45	50	63	-80	-55.9%	13	26.0%
Destrehan	70047	139	131	103	135	136	-3	-2.2%	1	0.7%
Gretna	70053	230	217	171	197	178	-52	-22.6%	-19	-9.6%
Gretna/S of Whitney	70056	599	619	446	541	596	-3	-0.5%	55	10.2%
Harvey	70058	729	711	555	595	644	-85	-11.7%	49	8.2%
South Kenner	70062	196	233	180	211	204	8	4.1%	-7	-3.3%
North Kenner	70065	742	736	559	645	723	-19	-2.6%	78	12.1%
LaPlace	70068	265	286	204	261	276	11	4.2%	15	5.7%
Marrero	70072	862	825	739	818	860	-2	-0.2%	42	5.1%
Westwego	70094	405	409	348	374	410	5	1.2%	36	9.6%
Algiers	70114	471	439	290	301	359	-112	-23.8%	58	19.3%
Uptown	70115	331	334	137	184	226	-105	-31.7%	42	22.8%
French Quarter-Marigny	70116	127	140	57	91	98	-29	-22.8%	7	7.7%
Bywater/ Lower 9th Ward	70117	638	597	120	115	155	-483	-75.7%	40	34.8%
Carrollton/Riverbend	70118	363	380	140	178	224	-139	-38.3%	46	25.8%
Mid City	70119	635	629	167	249	296	-339	-53.4%	47	18.9%
N.O. Postal Box Zone	70121	150	165	120	115	146	-4	-2.7%	31	27.0%
Lakefront/Gentilly	70122	670	634	109	157	232	-438	-65.4%	75	47.8%
Harahan-Jefferson	70123	283	276	222	279	288	5	1.8%	9	3.2%
Lakefront/Lakeview	70124	243	222	57	53	92	-151	-62.1%	39	73.6%
Broadmoor	70125	219	221	41	74	109	-110	-50.2%	35	47.3%
N.O. East Crowder	70126	627	613	67	85	162	-465	-74.2%	77	90.6%
N.O. East Crowder to Wright Rd	70127	479	459	85	100	198	-281	-58.7%	98	98.0%
N.O. East Wright Rd to I-510	70128	331	342	64	87	172	-159	-48.0%	85	97.7%
N.O. East Past I-510	70129	255	251	63	100	137	-118	-46.3%	37	37.0%
N.O. CBD Lower Garden District	70130	141	137	72	110	95	-46	-32.6%	-15	-13.6%
Lower Coast Algiers	70131	390	435	333	376	421	31	7.9%	45	12.0%
Slidell	70458	413	411	262	331	382	-31	-7.5%	51	15.4%
Slidell	70460	282	304	193	247	263	-19	-6.7%	16	6.5%
Slidell	70461	294	340	207	320	340	46	15.6%	20	6.3%
Subtotal		13,615	13,529	7,459	9,013	10,280	-3,335	-24.5%	1,267	14.1%
Other Louisiana		2,783	3,062	2,311	2,686	2,807	24	0.9%	121	4.5%
Total Louisiana		16,398	16,591	9,770	11,699	13,087	-3,311	-20.2%	1,388	11.9%
Out-of-State/Unknown		103	78	231	217	124	21	20.4%	-93	-42.9%
<b>Total</b>		<b>16,501</b>	<b>16,669</b>	<b>10,001</b>	<b>11,916</b>	<b>13,211</b>	<b>-3,290</b>	<b>-19.9%</b>	<b>1,295</b>	<b>10.9%</b>

City Park							Number Change	% Change	Number Change	% Change
	Zip Code	Fall 2003	Fall 2004	Spring 2006	Fall 2006	Fall 2007	2003 to 2007	2003 to 2007	2006 to 2007	2006 to 2007
Metairie S of I-10	70001	505	523	314	389	424	-81	-19.1%	35	8.3%
Metairie	70002	238	205	129	157	193	-45	-23.3%	36	18.7%
West Metairie	70003	475	504	321	418	479	4	0.8%	61	12.7%
Old Metairie-Bucktown	70005	240	236	158	194	184	-56	-30.4%	-10	-5.4%
Metairie Clearview N of I-10	70006	194	199	117	137	156	-38	-24.4%	19	12.2%
Belle Chasse	70037	45	45	40	48	40	-5	-12.5%	-8	-20.0%
Chalmette	70043	117	114	33	40	44	-73	-165.9%	4	9.1%
Destrehan	70047	130	123	86	108	116	-14	-12.1%	8	6.9%
Gretna	70053	68	65	54	63	62	-6	-9.7%	-1	-1.6%
Gretna/S of Whitney	70056	194	214	144	182	231	37	16.0%	49	21.2%
Harvey	70058	212	232	173	195	221	9	4.1%	26	11.8%
South Kenner	70062	186	219	168	190	181	-5	-2.8%	-9	-5.0%
North Kenner	70065	709	671	496	573	652	-57	-8.7%	79	12.1%
LaPlace	70068	250	268	204	240	241	-9	-3.7%	1	0.4%
Marrero	70072	235	240	233	221	222	-13	-5.9%	1	0.5%
Westwego	70094	160	160	131	139	156	-4	-2.6%	17	10.9%
Algiers	70114	135	135	86	95	113	-22	-19.5%	18	15.9%
Uptown	70115	301	296	116	158	206	-95	-46.1%	48	23.3%
French Quarter-Marigny	70116	125	130	50	80	89	-36	-40.4%	9	10.1%
Bywater/ Lower 9th Ward	70117	609	556	107	103	142	-467	-328.9%	39	27.5%
Carrollton/Riverbend	70118	341	350	121	156	205	-136	-66.3%	49	23.9%
Mid City	70119	612	601	151	225	264	-348	-131.8%	39	14.8%
N.O. Postal Box Zone	70121	138	145	105	100	133	-5	-3.8%	33	24.8%
Lakefront/Gentilly	70122	634	591	89	139	209	-425	-203.3%	70	33.5%
Harahan-Jefferson	70123	259	249	188	229	247	-12	-4.9%	18	7.3%
Lakefront/Lakeview	70124	229	202	51	50	78	-151	-193.6%	28	35.9%
Broadmoor	70125	208	206	35	65	97	-111	-114.4%	32	33.0%
N.O. East Crowder	70126	590	576	57	69	149	-441	-296.0%	80	53.7%
N.O. East Crowder to Wright Rd	70127	456	435	70	88	172	-284	-165.1%	84	48.8%
N.O. East Wright Rd to I-510	70128	304	316	54	78	154	-150	-97.4%	76	49.4%
N.O. East Past I-510	70129	240	236	54	89	122	-118	-96.7%	33	27.0%
N.O. CBD Lower Garden District	70130	129	116	62	96	76	-53	-69.7%	-20	-26.3%
Lower Coast Algiers	70131	131	146	109	106	121	-10	-8.3%	15	12.4%
Slidell	70458	92	96	82	106	118	26	22.0%	12	10.2%
Slidell	70460	69	76	66	66	79	10	12.7%	13	16.5%
Slidell	70461	89	100	72	85	115	26	22.6%	30	26.1%
Subtotal		9,649	9,576	4,526	5,477	6,491	-3,158	-48.7%	1,014	15.6%
Other Louisiana		1,835	1,760	1,241	1,443	1,453	-382	-26.3%	10	0.7%
Total Louisiana		11,484	11,336	5,767	6,920	7,944	-3,540	-44.6%	1,024	12.9%
Out-of-State/Unknown		83	50	160	158	81	-2	-2.5%	-77	-95.1%
<b>Total</b>		<b>11,567</b>	<b>11,386</b>	<b>5,927</b>	<b>7,078</b>	<b>8,025</b>	<b>-3,542</b>	<b>-44.1%</b>	<b>947</b>	<b>11.8%</b>



West Bank							Number Change	% Change	Number Change	% Change
	Zip Code	Fall 2003	Fall 2004	Spring 2006	Fall 2006	Fall 2007	2003 to 2007	2003 to 2007	2006 to 2007	2006 to 2007
Metairie S of I-10	70001	1	6	18	15	16	15	93.8%	1	6.3%
Metairie	70002	2	8	5	8	12	10	83.3%	4	33.3%
West Metairie	70003	6	8	10	16	13	7	53.8%	-3	-23.1%
Old Metairie-Bucktown	70005	3	4	8	9	10	7	70.0%	1	10.0%
Metairie Clearview N of I-10	70006	0	0	3	6	6	6	100.0%	0	0.0%
Belle Chasse	70037	135	137	96	113	137	2	1.5%	24	17.5%
Chalmette	70043	3	2	1	0	2	-1	0.0%	2	0.0%
Destrehan	70047	1	1	8	13	8	7	87.5%	-5	-62.5%
Gretna	70053	153	141	106	123	111	-42	-37.8%	-12	-10.8%
Gretna/S of Whitney	70056	380	374	271	321	329	-51	-15.5%	8	2.4%
Harvey	70058	495	440	344	350	386	-109	-28.2%	36	9.3%
South Kenner	70062	1	7	5	14	9	8	88.9%	-5	-55.6%
North Kenner	70065	5	15	15	18	16	11	68.8%	-2	-12.5%
Jean Lafitte	70067	48	45	22	20	18	-30	-166.7%	-2	-11.1%
LaPlace	70068	4	6	7	7	9	5	55.6%	2	22.2%
Marrero	70072	583	548	475	549	586	3	0.5%	37	6.3%
Plaquemines	70083	35	33	16	13	25	-10	-40.0%	12	48.0%
Westwego	70094	229	231	199	211	227	-2	-0.9%	16	7.0%
Algiers	70114	323	285	195	192	236	-87	-36.9%	44	18.6%
Uptown	70115	8	18	13	20	15	7	46.7%	-5	-33.3%
French Quarter-Marigny	70116	0	4	2	3	5	5	100.0%	2	40.0%
Bywater/ Lower 9th Ward	70117	14	16	7	10	7	-7	-100.0%	-3	-42.9%
Carrollton/Riverbend	70118	4	15	14	13	11	7	63.6%	-2	-18.2%
Mid City	70119	6	10	6	9	18	12	66.7%	9	50.0%
N.O. Postal Box Zone	70121	5	3	9	5	8	3	37.5%	3	37.5%
Lakefront/Gentilly	70122	13	16	10	9	11	-2	-18.2%	2	18.2%
Harahan-Jefferson	70123	6	14	11	24	15	9	60.0%	-9	-60.0%
Lakefront/Lakeview	70124	2	4	1	1	6	4	66.7%	5	83.3%
Broadmoor	70125	3	10	6	6	6	3	50.0%	0	0.0%
N.O. East Crowder	70126	14	15	5	7	7	-7	-100.0%	0	0.0%
N.O. East Crowder to Wright Rd	70127	8	7	8	4	14	6	42.9%	10	71.4%
N.O. East Wright Rd to I-510	70128	8	7	4	5	9	1	11.1%	4	44.4%
N.O. East Past I-510	70129	4	6	7	5	12	8	66.7%	7	58.3%
N.O. CBD Lower Garden District	70130	6	13	8	9	16	10	62.5%	7	43.8%
Lower Coast Algiers	70131	247	271	209	242	279	32	11.5%	37	13.3%
Slidell	70458	0	4	2	4	5	5	100.0%	1	20.0%
Slidell	70460	0	1	4	4	3	3	100.0%	-1	-33.3%
Slidell	70461	1	0	2	3	6	5	83.3%	3	50.0%
Subtotal		2,756	2,725	2,132	2,381	2,609	-147	-5.6%	228	8.7%
Other Louisiana		223	211	204	231	214	-9	-4.2%	-17	-7.9%
Total Louisiana		2,979	2,936	2,336	2,612	2,823	-156	-5.5%	211	7.5%
Out-of-State/Unknown		10	9	33	20	19	9	47.4%	-1	-5.3%
<b>Total</b>		<b>2,989</b>	<b>2,945</b>	<b>2,369</b>	<b>2,632</b>	<b>2,842</b>	<b>-147</b>	<b>-5.2%</b>	<b>210</b>	<b>7.4%</b>

Charity School of Nursing							Number Change	% Change	Number Change	% Change
	Zip Code	Fall 2003	Fall 2004	Spring 2006	Fall 2006	Fall 2007	2003 to 2007	2003 to 2007	2006 to 2007	2006 to 2007
Metairie S of I-10	70001	33	44	23	35	38	5	15.2%	3	8.6%
Metairie	70002	9	13	7	9	6	-3	-33.3%	-3	-33.3%
West Metairie	70003	41	47	23	28	29	-12	-29.3%	1	3.6%
Old Metairie-Bucktown	70005	11	10	13	22	22	11	100.0%	0	0.0%
Metairie Clearview N of I-10	70006	10	7	4	7	10	0	0.0%	3	42.9%
Belle Chasse	70037	7	7	11	17	10	3	42.9%	-7	-41.2%
Chalmette	70043	22	26	9	10	16	-6	-27.3%	6	60.0%
Destrehan	70047	8	6	9	13	11	3	37.5%	-2	-15.4%
Gretna	70053	9	11	11	11	5	-4	-44.4%	-6	-54.5%
Gretna/S of Whitney	70056	25	31	29	37	34	9	36.0%	-3	-8.1%
Harvey	70058	22	38	36	50	36	14	63.6%	-14	-28.0%
South Kenner	70062	8	7	7	7	14	6	75.0%	7	100.0%
North Kenner	70065	28	48	47	54	52	24	85.7%	-2	-3.7%
LaPlace	70068	11	11	9	13	25	14	127.3%	12	92.3%
Marrero	70072	44	37	30	46	51	7	15.9%	5	10.9%
Westwego	70094	16	16	18	23	26	10	62.5%	3	13.0%
Algiers	70114	13	18	8	13	10	-3	-23.1%	-3	-23.1%
Uptown	70115	21	20	8	6	5	-16	-76.2%	-1	-16.7%
French Quarter-Marigny	70116	2	5	5	8	4	2	100.0%	-4	-50.0%
Bywater/ Lower 9th Ward	70117	14	23	5	2	5	-9	-64.3%	3	150.0%
Carrollton/Riverbend	70118	18	14	5	8	8	-10	-55.6%	0	0.0%
Mid City	70119	16	18	9	15	14	-2	-12.5%	-1	-6.7%
N.O. Postal Box Zone	70121	7	17	6	10	5	-2	-28.6%	-5	-50.0%
Lakefront/Gentilly	70122	23	27	9	8	12	-11	-47.8%	4	50.0%
Harahan-Jefferson	70123	17	12	23	26	26	9	52.9%	0	0.0%
Lakefront/Lakeview	70124	12	16	4	2	8	-4	-33.3%	6	300.0%
Broadmoor	70125	8	5	0	3	5	-3	-37.5%	2	0.0%
N.O. East Crowder	70126	23	22	4	9	5	-18	-78.3%	-4	-44.4%
N.O. East Crowder to Wright Rd	70127	14	16	6	8	11	-3	-21.4%	3	37.5%
N.O. East Wright Rd to I-510	70128	19	19	4	4	7	-12	-63.2%	3	75.0%
N.O. East Past I-510	70129	10	6	2	4	1	-9	-90.0%	-3	-75.0%
N.O. CBD Lower Garden District	70130	6	8	2	4	2	-4	-66.7%	-2	-50.0%
Lower Coast Algiers	70131	12	17	13	29	21	9	75.0%	-8	-27.6%
Slidell	70458	27	32	21	29	26	-1	-3.7%	-3	-10.3%
Slidell	70460	11	21	21	27	22	11	100.0%	-5	-18.5%
Slidell	70461	17	15	16	23	18	1	5.9%	-5	-21.7%
Subtotal		594	690	457	620	600	6	1.0%	-20	-3.2%
Other Louisiana		128	162	179	229	228	100	78.1%	-1	-0.4%
Total Louisiana		722	852	636	849	828	106	14.7%	-21	-2.5%
Out-of-State/Unknown		3	8	22	19	16	13	433.3%	-3	-15.8%
<b>Total</b>		<b>725</b>	<b>860</b>	<b>658</b>	<b>868</b>	<b>844</b>	<b>119</b>	<b>16.4%</b>	<b>-24</b>	<b>-2.8%</b>

Slidell/Northshore							Number Change	% Change	Number Change	% Change
	Zip Code	Fall 2003	Fall 2004	Spring 2006	Fall 2006	Fall 2007	2003 to 2007	2003 to 2007	2006 to 2007	2006 to 2007
Metairie S of I-10	70001	0	1	2	2	4	4	0.0%	2	100.0%
Metairie	70002	0	0	0	0	0	0	0.0%	0	0.0%
West Metairie	70003	0	3	1	1	1	1	0.0%	0	0.0%
Old Metairie-Bucktown	70005	2	1	1	1	1	-1	-50.0%	0	0.0%
Metairie Clearview N of I-10	70006	0	2	0	1	1	1	0.0%	0	0.0%
Belle Chasse	70037	0	0	0	0	3	3	0.0%	3	0.0%
Chalmette	70043	1	0	2	0	1	0	0.0%	1	0.0%
Destrehan	70047	0	1	0	1	1	1	0.0%	0	0.0%
Gretna	70053	0	0	0	0	0	0	0.0%	0	0.0%
Gretna/S of Whitney	70056	0		2	1	2	2	0.0%	1	100.0%
Harvey	70058	0	1	2	0	1	1	0.0%	1	0.0%
South Kenner	70062	1	0	0	0	0	-1	-100.0%	0	0.0%
North Kenner	70065	0	2	1	0	3	3	0.0%	3	0.0%
LaPlace	70068	0	1	0	1	1	1	0.0%	0	0.0%
Marrero	70072	0	0	1	3	1	1	0.0%	-2	-66.7%
Westwego	70094	0	2	0	1	1	1	0.0%	0	0.0%
Algiers	70114	0	1	1	1	0	0	0.0%	-1	-100.0%
Uptown	70115	1	0	0	0	0	-1	-100.0%	0	0.0%
French Quarter-Marigny	70116	0	1	0	0	0	0	0.0%	0	0.0%
Bywater/ Lower 9th Ward	70117	1	2	1	0	1	0	0.0%	1	0.0%
Carrollton/Riverbend	70118	0	1	0	1	0	0	0.0%	-1	-100.0%
Mid City	70119	1	0	1	0	0	-1	-100.0%	0	0.0%
N.O. Postal Box Zone	70121	0	0	0	0	0	0	0.0%	0	0.0%
Lakefront/Gentilly	70122	0	0	1	1	0	0	0.0%	-1	-100.0%
Harahan-Jefferson	70123	1	1	0	0	0	-1	-100.0%	0	0.0%
Lakefront/Lakeview	70124	0	0	1	0	0	0	0.0%	0	0.0%
Broadmoor	70125	0	0	0	0	1	1	0.0%	1	0.0%
N.O. East Crowder	70126	0		1	0	1	1	0.0%	1	0.0%
N.O. East Crowder to Wright Rd	70127	1	1	1	0	1	0	0.0%	1	0.0%
N.O. East Wright Rd to I-510	70128	0	0	2	0	2	2	0.0%	2	0.0%
N.O. East Past I-510	70129	1	3	0	2	2	1	100.0%	0	0.0%
N.O. CBD Lower Garden District	70130	0	0	0	1	1	1	0.0%	0	0.0%
Lower Coast Algiers	70131	0	1	2	0	0	0	0.0%	0	0.0%
St. Tammany	70420	32	45	30	39	31	-1	-3.1%	-8	-20.5%
Washington	70427	23	28	34	27	42	19	82.6%	15	55.6%
Covington	70433	83	111	94	111	116	33	39.8%	5	4.5%
Covington	70435	27	41	40	53	74	47	174.1%	21	39.6%
St. Tammany	70445	58	68	33	52	58	0	0.0%	6	11.5%
St. Tammany	70448	48	67	62	77	90	42	87.5%	13	16.9%
St. Tammany	70452	75	72	46	62	90	15	20.0%	28	45.2%
Slidell	70458	294	279	157	192	233	-61	-20.7%	41	21.4%
Slidell	70460	202	209	102	150	159	-43	-21.3%	9	6.0%
Slidell	70461	187	225	117	208	201	14	7.5%	-7	-3.4%
St. Tammany	70471	49	62	53	68	60	11	22.4%	-8	-11.8%
Subtotal		1,088	1,232	791	1,057	1,184	96	8.8%	127	12.0%
Other Louisiana		125	235	241	261	308	183	146.4%	47	18.0%
Total Louisiana		1,213	1,467	1,032	1,318	1,492	279	23.0%	174	13.2%
Out-of-State/Unknown		7	11	16	20	8	1	14.3%	-12	-60.0%
<b>Total</b>		<b>1,220</b>	<b>1,478</b>	<b>1,048</b>	<b>1,338</b>	<b>1,500</b>	<b>280</b>	<b>23.0%</b>	<b>162</b>	<b>12.1%</b>