

# Delgado

COMMUNITY COLLEGE

## Preliminary Enrollment Report

Spring 2009



Published on February 16, 2009

By The Office of Institutional Research

## **Table of Contents**

## **Page no.**

Summary	
Enrollment by Gender	1
Enrollment by Ethnicity	2
Enrollment by Age	4
Enrollment by Admission Status	6
Enrollment by Classification	8
Full-time/Part-time Status, Headcount, FTE, SCH	9
Enrollment by Award Sought	11
Enrollment by Division	12
Enrollment by Online Status	13
Enrollment by Program, Full-time Status	14
Enrollment by Program, Part-time Status	15
Enrollment by Program	17
Enrollment by Program Ranked by Student Total	23
Enrollment by Parish	25
Top 50 "Feeder" High Schools of First Time Freshmen	27
Enrollment by Zip Code	28

## SUMMARY

- ✓ Enrollment increased 11.4% from Spring 2008 (13,179) to Spring 2009 (14,678).
- ✓ Enrollment is down by 12.6% from Spring 2005 (pre-Katrina) to Spring 2009 (post-
- ✓ Enrollment at the City Park campus increased by 8.6% since Spring 2008.
- ✓ West Bank has grown increased by 15.4% since Spring 2008.
- ✓ The Northshore Site, created in Spring 2003, had the largest increased of 24.7% in the last year.
- ✓ Our male enrollment increased by 13.8% while female enrollment increased by 10.3%
- ✓ Asian enrollment increased by 31.4%, our Hispanic enrollment increased by 20.5%, our Non-Resident Alien enrollment has increased by 19.8%, and our African American enrollment by 9.5% in 1 year.
- ✓ First-time Freshman student enrollment increased 27.6%, Readmit students increased by 18.8% and Transfer students increased by 11.8%. While Continuing student enrollment increased by 9.0% from Spring 2008.
- ✓ Non-degree seekers increased by 23% and students seeking a 1-year certificate increased by 14.7% from Spring 2008.
- ✓ Business & Management, formerly named Management, had the largest increase of 324 students from last year. Teaching Grades 1-5, General Studies, General Science, and English as a Second Language had significant increases in program enrollment.
- ✓ Pre-nursing had a significant increase of 6.7%, 178 students, while the number of Students accepted into the Nursing program decreased by 1.7% from the last year.
- ✓ Basic Education on the West Bank campus has increased by 38.6% since Spring 2008.
  
- ✓ Enrollment of students residing in Orleans parish increased by 15.3%, St. Bernard parish by 11.5% and Jefferson parish by 11.2%.

### Spring Enrollment History 2005-2009 by Campus

College Wide	Each student is counted once college wide and assigned a campus.				
Enrollment Unduplicated <sup>1</sup>	2005	2006	2007	2008	2009
City Park	11,441	5,927	7,064	8,341	9,057
West Bank	3,011	2,369	2,656	2,577	2,974
Charity School of Nursing	870	658	788	756	770
Northshore	1,465	1,048	1,272	1,505	1,877
<b>Total</b>	<b>16,787</b>	<b>10,002</b>	<b>11,780</b>	<b>13,179</b>	<b>14,678</b>

Number Change	% Change
2005 to 2009	2005 to 2009
-2,384	-20.8%
-37	-1.2%
-100	-11.5%
412	28.1%
<b>-2,109</b>	<b>-12.6%</b>

Number Change	% Change
2008 to 2009	2008 to 2009
716	8.6%
397	15.4%
14	1.9%
372	24.7%
<b>1,499</b>	<b>11.4%</b>

<sup>1</sup> Students are counted once, on the campus that they are taking most of their classes.

Course Enrollment (Duplicated) <sup>2</sup>					
	2005	2006	2007	2008	2009
City Park	37,613	19,566	23,458	27,240	30,438
West Bank	9,849	7,848	8,847	8,755	9,360
Charity School of Nursing	1,355	1,022	1,168	1,098	1,213
Northshore	5,093	3,346	4,024	5,147	6,260

<sup>2</sup> Students are counted for each class taken.

Unduplicated Campus Headcount <sup>3</sup>					
	2005	2006	2007	2008	2009
City Park			7,638	8,948	9,789
West Bank			3,339	3,350	3,806
Charity School of Nursing			788	757	790
Northshore			1,479	1,857	2,223

<sup>3</sup> Students are counted once on each campus they are taking a class.

### Spring Enrollment History 2005-2009 by Gender

College Wide	2005	2006	2007	2008	2009
Gender	2005	2006	2007	2008	2009
Female	11,773	7,126	8,205	9,031	9,957
Male	5,014	2,876	3,575	4,148	4,721
<b>Total</b>	<b>16,787</b>	<b>10,002</b>	<b>11,780</b>	<b>13,179</b>	<b>14,678</b>

2005 to 2009	2005 to 2009
-1,816	-15.4%
-293	-5.8%
<b>-2,109</b>	<b>-12.6%</b>

2008 to 2009	2008 to 2009
926	10.3%
573	13.8%
<b>1,499</b>	<b>11.4%</b>

Percentages					
	2005	2006	2007	2008	2009
Female	70.1%	71.2%	69.7%	68.5%	67.8%
Male	29.9%	28.8%	30.3%	31.5%	32.2%

City Park Campus					
Gender	2005	2006	2007	2008	2009
Female	7,669	3,996	4,583	5,351	5,843
Male	3,772	1,931	2,481	2,990	3,214
<b>Total</b>	<b>11,441</b>	<b>5,927</b>	<b>7,064</b>	<b>8,341</b>	<b>9,057</b>
West Bank Campus					
Female	2,292	1,779	2,001	1,946	2,121
Male	719	590	655	631	853
<b>Total</b>	<b>3,011</b>	<b>2,369</b>	<b>2,656</b>	<b>2,577</b>	<b>2,974</b>
Charity School of Nursing					
Female	762	566	709	654	666
Male	108	92	79	102	104
<b>Total</b>	<b>870</b>	<b>658</b>	<b>788</b>	<b>756</b>	<b>770</b>
Northshore Site					
Female	1,050	785	912	1,080	1,327
Male	415	263	360	425	550
<b>Total</b>	<b>1,465</b>	<b>1,048</b>	<b>1,272</b>	<b>1,505</b>	<b>1,877</b>

Number Change	% Change
2005 to 2009	2005 to 2009
-1,826	-23.8%
-558	-14.8%
<b>-2,384</b>	<b>-20.8%</b>
-171	-7.5%
134	18.6%
<b>-37</b>	<b>-1.2%</b>
-96	-12.6%
-4	-3.7%
<b>-100</b>	<b>-11.5%</b>
277	26.4%
135	32.5%
<b>412</b>	<b>28.1%</b>

Number Change	% Change
2008 to 2009	2008 to 2009
492	9.2%
224	7.5%
<b>716</b>	<b>8.6%</b>
175	9.0%
222	35.2%
<b>397</b>	<b>15.4%</b>
12	1.8%
2	2.0%
<b>14</b>	<b>1.9%</b>
247	22.9%
125	29.4%
<b>372</b>	<b>24.7%</b>

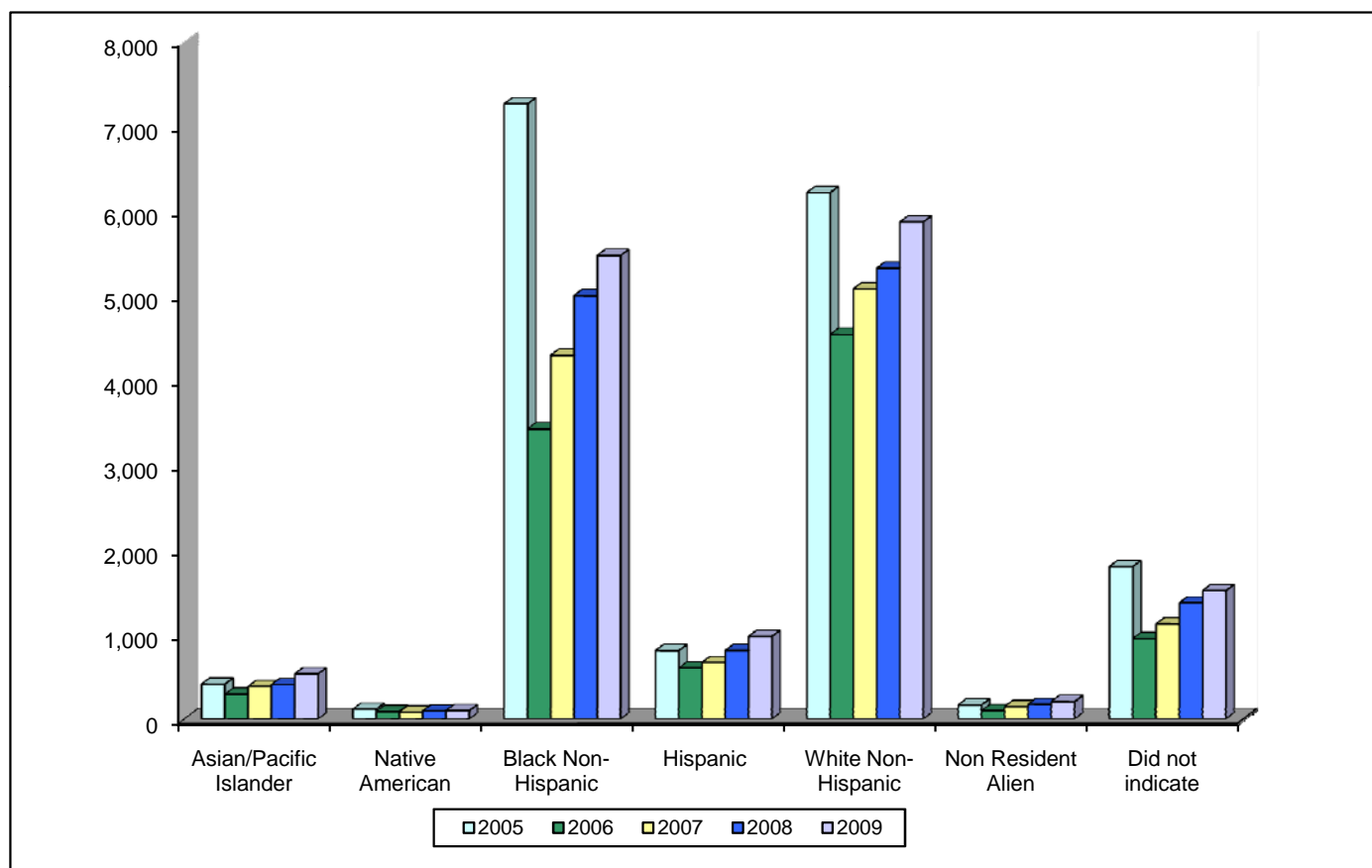
### Spring Enrollment History 2005-2009 by Ethnicity

College Wide					
Ethnicity	2005	2006	2007	2008	2009
Asian/Pacific Islander	412	293	383	405	532
Native American	115	87	81	92	98
Black Non-Hispanic	7,267	3,427	4,297	5,002	5,476
Hispanic	808	605	668	810	976
White Non-Hispanic	6,218	4,543	5,082	5,326	5,874
Non Resident Alien	166	97	147	172	206
Did not indicate	1,801	950	1,122	1,372	1,516
<b>Total</b>	<b>16,787</b>	<b>10,002</b>	<b>11,780</b>	<b>13,179</b>	<b>14,678</b>

Number Change	% Change
2005 to 2009	2005 to 2009
120	29.1%
-17	-14.8%
-1,791	-24.6%
168	20.8%
-344	-5.5%
40	24.1%
-285	-15.8%
<b>-2,109</b>	<b>-12.6%</b>

Number Change	% Change
2008 to 2009	2008 to 2009
127	31.4%
6	6.5%
474	9.5%
166	20.5%
548	10.3%
34	19.8%
144	10.5%
<b>1,499</b>	<b>11.4%</b>

Percentages					
Asian/Pacific Islander	2%	3%	3%	3%	3.6%
Native American	1%	1%	1%	1%	0.7%
Black Non-Hispanic	43%	34%	36%	38%	37.3%
Hispanic	5%	6%	6%	6%	6.6%
White Non-Hispanic	37%	45%	43%	40%	40.0%
Non Resident Alien	1%	1%	1%	1%	1.4%
Did not indicate	11%	9%	10%	10%	10.3%



## Spring Enrollment History 2005-2009 Ethnicity by Campus

City Park Campus					
	2005	2006	2007	2008	2009
Asian/Pacific Islander	300	181	236	285	371
Native American	64	45	47	52	56
Black Non-Hispanic	5,247	1,935	2,526	3,154	3,330
Hispanic	585	413	465	603	710
White Non-Hispanic	3,864	2,661	2,945	3,245	3,480
Non Resident Alien	159	94	132	164	191
Did not indicate	1,222	598	713	838	919
<b>Total</b>	<b>11,441</b>	<b>5,927</b>	<b>7,064</b>	<b>8,341</b>	<b>9,057</b>

Number Change	% Change
2005 to 2009	2005 to 2009
71	23.7%
-8	-12.5%
-1,917	-36.5%
125	21.4%
-384	-9.9%
32	20.1%
-303	-24.8%
<b>-2,384</b>	<b>-20.8%</b>

Number Change	% Change
2008 to 2009	2008 to 2009
86	30.2%
4	7.7%
176	5.6%
107	17.7%
235	7.2%
27	16.5%
81	9.7%
<b>716</b>	<b>8.6%</b>

West Bank Campus					
	2005	2006	2007	2008	2009
Asian/Pacific Islander	87	95	133	98	126
Native American	33	28	20	22	21
Black Non-Hispanic	1,549	1,100	1,264	1,290	1,547
Hispanic	146	126	125	105	159
White Non-Hispanic	896	797	853	743	795
Non Resident Alien	2	3	10	3	4
Did not indicate	298	220	251	316	322
<b>Total</b>	<b>3,011</b>	<b>2,369</b>	<b>2,656</b>	<b>2,577</b>	<b>2,974</b>

39	44.8%
-12	-36.4%
-2	-0.1%
13	8.9%
-101	-11.3%
2	100.0%
24	8.1%
<b>-37</b>	<b>-1.2%</b>

28	28.6%
-1	-4.5%
257	19.9%
54	51.4%
52	7.0%
1	33.3%
6	1.9%
<b>397</b>	<b>15.4%</b>

Charity School of Nursing					
	2005	2006	2007	2008	2009
Asian/Pacific Islander	18	12	6	10	15
Native American	8	6	4	6	6
Black Non-Hispanic	214	171	232	216	202
Hispanic	37	38	40	43	47
White Non-Hispanic	490	374	433	394	428
Non Resident Alien	4	0	4	4	9
Did not indicate	99	57	69	83	63
<b>Total</b>	<b>870</b>	<b>658</b>	<b>788</b>	<b>756</b>	<b>770</b>

-3	-16.7%
-2	-25.0%
-12	-5.6%
10	27.0%
-62	-12.7%
5	125.0%
-36	-36.4%
<b>-100</b>	<b>-11.5%</b>

5	50.0%
0	0.0%
-14	-6.5%
4	9.3%
34	8.6%
5	0.0%
-20	-24.1%
<b>14</b>	<b>1.9%</b>

Northshore Site					
	2005	2006	2007	2008	2009
Asian/Pacific Islander	7	5	8	12	20
Native American	10	8	10	12	15
Black Non-Hispanic	257	221	275	342	397
Hispanic	40	28	38	59	60
White Non-Hispanic	968	711	851	944	1171
Non Resident Alien	1	0	1	1	2
Did not indicate	182	75	89	135	212
<b>Total</b>	<b>1,465</b>	<b>1,048</b>	<b>1,272</b>	<b>1,505</b>	<b>1,877</b>

13	185.7%
5	50.0%
140	54.5%
20	50.0%
203	21.0%
1	0.0%
30	16.5%
<b>412</b>	<b>28.1%</b>

8	66.7%
3	25.0%
55	16.1%
1	1.7%
227	24.0%
1	0.0%
77	57.0%
<b>372</b>	<b>24.7%</b>

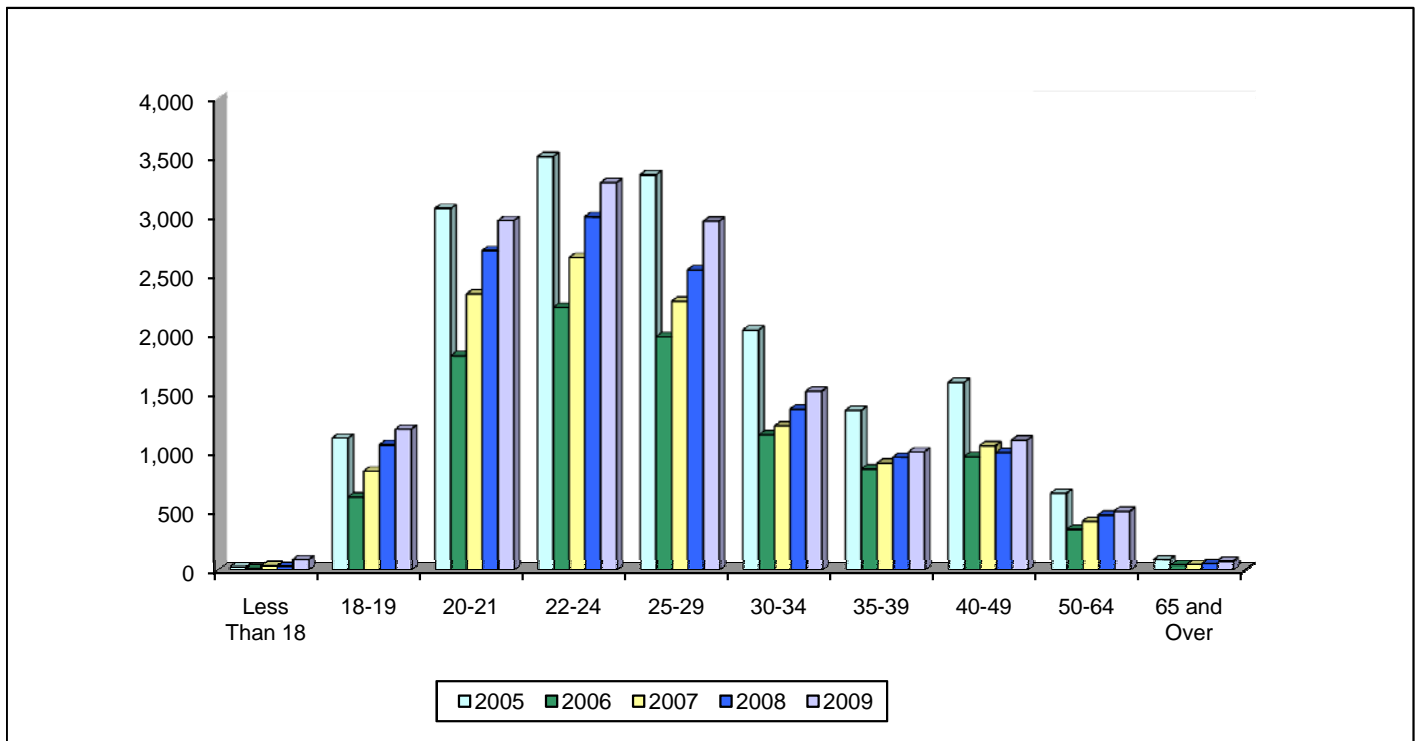
### Spring Enrollment History 2005-2009 by Age

College Wide	2005	2006	2007	2008	2009
	Less Than 18	24	10	35	28
18-19	1,119	619	838	1,063	1,194
20-21	3,067	1,817	2,342	2,709	2,964
22-24	3,507	2,228	2,650	2,997	3,286
25-29	3,353	1,978	2,280	2,546	2,958
30-34	2,036	1,146	1,221	1,365	1,517
35-39	1,354	857	906	955	1,002
40-49	1,592	960	1,054	995	1,101
50-64	650	345	411	467	498
65 and Over	85	42	43	54	72
<b>Total</b>	<b>16,787</b>	<b>10,002</b>	<b>11,780</b>	<b>13,179</b>	<b>14,678</b>
<b>Average Age</b>	28	28	28	28	28

Number Change	% Change
2005 to 2009	2005 to 2009
62	258.3%
75	6.7%
-103	-3.4%
-221	-6.3%
-395	-11.8%
-519	-25.5%
-352	-26.0%
-491	-30.8%
-152	-23.4%
-13	-15.3%
<b>-2,109</b>	<b>-12.6%</b>

Number Change	% Change
2008 to 2009	2008 to 2009
58	207.1%
131	12.3%
255	9.4%
289	9.6%
412	16.2%
152	11.1%
47	4.9%
106	10.7%
31	6.6%
18	33.3%
<b>1,499</b>	<b>11.4%</b>

Percentages					
Less Than 18	0%	0%	0%	0%	1%
18-19	7%	6%	7%	8%	8%
20-21	18%	18%	20%	21%	20%
22-24	21%	22%	22%	23%	22%
25-29	20%	20%	19%	19%	20%
30-34	12%	11%	10%	10%	10%
35-39	8%	9%	8%	7%	7%
40-49	9%	10%	9%	8%	8%
50-64	4%	3%	3%	4%	3%
65 and Over	1%	0%	0%	0%	0%



## Spring Enrollment History 2005-2009 by Age by Campus

City Park Campus					
	2005	2006	2007	2008	2009
Less Than 18	17	6	17	18	72
18-19	822	309	480	671	788
20-21	2,183	1,078	1,441	1,683	1,819
22-24	2,456	1,409	1,700	2,010	2,138
25-29	2,289	1,180	1,370	1,627	1,844
30-34	1,300	684	686	843	874
35-39	844	481	499	552	569
40-49	1,031	532	601	606	612
50-64	439	229	249	303	303
65 and Over	60	19	21	28	38
<b>Total</b>	<b>11,441</b>	<b>5,927</b>	<b>7,064</b>	<b>8,341</b>	<b>9,057</b>

Number Change	% Change
2005 to 2009	2005 to 2009
55	323.5%
-34	-4.1%
-364	-16.7%
-318	-12.9%
-445	-19.4%
-426	-32.8%
-275	-32.6%
-419	-40.6%
-136	-31.0%
-22	-36.7%
<b>-2,384</b>	<b>-20.8%</b>

Number Change	% Change
2008 to 2009	2008 to 2009
54	300.0%
117	17.4%
136	8.1%
128	6.4%
217	13.3%
31	3.7%
17	3.1%
6	1.0%
0	0.0%
10	35.7%
<b>716</b>	<b>8.6%</b>

West Bank Campus					
	2005	2006	2007	2008	2009
Less Than 18	5	4	18	7	13
18-19	197	218	250	260	244
20-21	565	493	544	606	655
22-24	612	485	544	504	634
25-29	533	416	493	454	538
30-34	391	224	252	246	323
35-39	255	184	177	187	201
40-49	292	243	246	189	228
50-64	139	80	111	100	108
65 and Over	22	22	21	24	30
<b>Total</b>	<b>3,011</b>	<b>2,369</b>	<b>2,656</b>	<b>2,577</b>	<b>2,974</b>

8	160.0%
47	23.9%
90	15.9%
22	3.6%
5	0.9%
-68	-17.4%
-54	-21.2%
-64	-21.9%
-31	-22.3%
8	36.4%
<b>-37</b>	<b>-1.2%</b>

6	85.7%
-16	-6.2%
49	8.1%
130	25.8%
84	18.5%
77	31.3%
14	7.5%
39	20.6%
8	8.0%
6	25.0%
<b>397</b>	<b>15.4%</b>

Charity School of Nursing					
	2005	2006	2007	2008	2009
Less Than 18	0	0	0	0	0
18-19	0	0	0	0	0
20-21	17	7	8	13	13
22-24	181	115	155	162	156
25-29	256	193	214	224	230
30-34	183	138	156	144	138
35-39	109	106	138	108	98
40-49	104	83	101	90	103
50-64	20	16	16	15	32
65 and Over	0	0	0	0	0
<b>Total</b>	<b>870</b>	<b>658</b>	<b>788</b>	<b>756</b>	<b>770</b>

0	0.0%
0	0.0%
-4	-23.5%
-25	-13.8%
-26	-10.2%
-45	-24.6%
-11	-10.1%
-1	-1.0%
12	60.0%
0	0.0%
<b>-100</b>	<b>-11.5%</b>

0	0.0%
0	0.0%
0	0.0%
-6	-3.7%
6	2.7%
-6	-4.2%
-10	-9.3%
13	14.4%
17	113.3%
0	0.0%
<b>14</b>	<b>1.9%</b>

Northshore Site					
	2005	2006	2007	2008	2009
Less Than 18	2	0	0	3	1
18-19	100	92	108	132	162
20-21	302	239	349	407	477
22-24	258	219	251	321	358
25-29	275	189	203	241	346
30-34	162	100	127	132	182
35-39	146	86	92	108	134
40-49	165	102	106	110	158
50-64	52	20	35	49	55
65 and Over	3	1	1	2	4
<b>Total</b>	<b>1,465</b>	<b>1,048</b>	<b>1,272</b>	<b>1,505</b>	<b>1,877</b>

-1	-50.0%
62	62.0%
175	57.9%
100	38.8%
71	25.8%
20	12.3%
-12	-8.2%
-7	-4.2%
3	5.8%
1	33.3%
<b>412</b>	<b>28.1%</b>

-2	0.0%
30	22.7%
70	17.2%
37	11.5%
105	43.6%
50	37.9%
26	24.1%
48	43.6%
6	12.2%
2	100.0%
<b>372</b>	<b>24.7%</b>



## Spring Enrollment History 2005-2009 by Admission Status

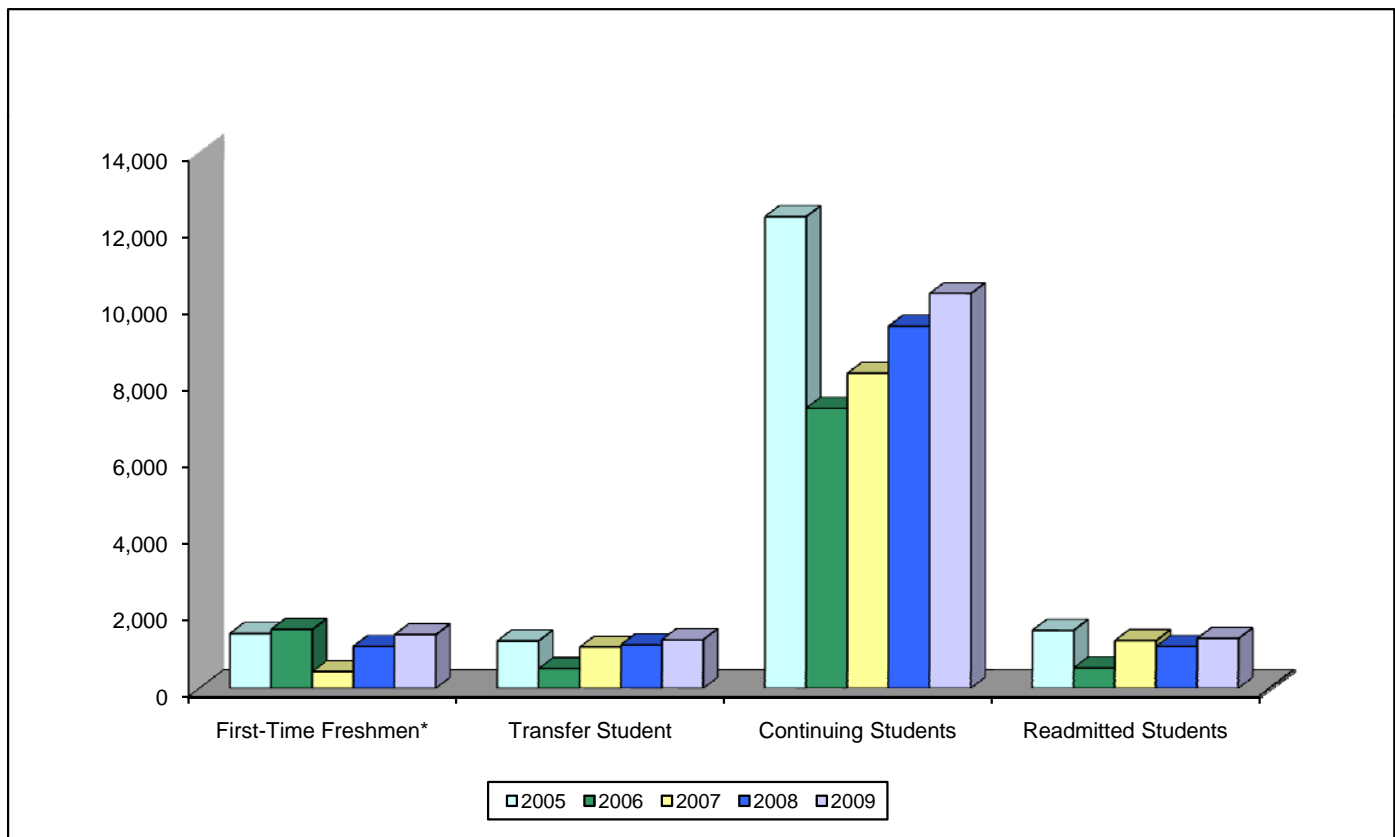
College Wide					
	2005	2006	2007	2008	2009
First-Time Freshmen*	1,432	1,536	434	1,098	1,401
Transfer Student	1,243	518	1,077	1,140	1,275
Continuing Students	12,323	7,322	8,226	9,461	10,313
Readmitted Students	1,518	540	1,251	1,097	1,303
Exchange Students	219	86	167	184	263
Other Students	52	0	0	199	123
<b>Total</b>	<b>16,787</b>	<b>10,002</b>	<b>11,155</b>	<b>13,179</b>	<b>14,678</b>

Number Change	% Change
2005 to 2009	2005 to 2009
-31	-2.2%
32	2.6%
-2,010	-16.3%
-215	-14.2%
44	20.1%
71	136.5%
<b>-2,109</b>	<b>-12.6%</b>

Number Change	% Change
2008 to 2009	2008 to 2009
303	27.6%
135	11.8%
852	9.0%
206	18.8%
79	42.9%
-76	-38.2%
<b>1,499</b>	<b>11.4%</b>

Percentages					
First-Time Freshmen	9%	15%	4%	8%	10%
Transfer Student	7%	5%	10%	9%	9%
Continuing Students	73%	73%	74%	72%	70%
Readmitted Students	9%	5%	11%	8%	9%
Exchange Students	1%	1%	1%	1%	2%
Other Students	0%	0%	0%	2%	1%

\* 1,043 were First-time Freshman in Fall 2005 who returned in Spring 2006; 483 are new first time freshman for Spring 2006



## Spring Enrollment History 2005-2009 by Admission Status by Campus

						Number Change	% Change	Number Change	% Change
						2005 to 2009	2005 to 2009	2008 to 2009	2008 to 2009
<b>City Park Campus</b>									
First-Time Freshmen	941	776		659	910	-31	-3.3%	251	38.1%
Transfer Student	863	302	698	725	859	-4	-0.5%	134	18.5%
Continuing Students	8,373	4,489	4,843	5,933	6,271	-2,102	-25.1%	338	5.7%
Readmitted Students	1,040	312	786	676	763	-277	-26.6%	87	12.9%
Exchange Students	172	48	112	149	207	35	20.3%	58	38.9%
Other Students	52	0	0	199	47	-5	-9.6%	-152	-76.4%
<b>Total</b>	<b>11,441</b>	<b>5,927</b>	<b>6,439</b>	<b>8,341</b>	<b>9,057</b>	<b>-2,384</b>	<b>-20.8%</b>	<b>716</b>	<b>8.6%</b>
<b>West Bank Campus</b>									
First-Time Freshmen	304	482	261	232	264	-40	-13.2%	32	13.8%
Transfer Student	200	143	208	170	180	-20	-10.0%	10	5.9%
Continuing Students	2,190	1,535	1,842	1,885	2,076	-114	-5.2%	191	10.1%
Readmitted Students	288	174	293	258	331	43	14.9%	73	28.3%
Exchange Students	29	35	52	32	47	18	62.1%	15	46.9%
Other Students	0	0	0	0	76	0	0.0%	76	0.0%
<b>Total</b>	<b>3,011</b>	<b>2,369</b>	<b>2,656</b>	<b>2,577</b>	<b>2,974</b>	<b>-37</b>	<b>-1.2%</b>	<b>397</b>	<b>15.4%</b>
<b>Charity School of Nursing</b>									
First-Time Freshmen	0	0	1	0	0	0	0.0%	0	0.0%
Transfer Student	23	0	15	50	5	-18	-78.3%	-45	-90.0%
Continuing Students	772	641	707	668	716	-56	-7.3%	48	7.2%
Readmitted Students	75	16	64	38	49	-26	-34.7%	11	28.9%
Exchange Students	0	1	1	0	0	0	0.0%	0	0.0%
Other Students	0	0	0	0	0	N/A	N/A	0	0.0%
<b>Total</b>	<b>870</b>	<b>658</b>	<b>788</b>	<b>756</b>	<b>770</b>	<b>-100</b>	<b>-11.5%</b>	<b>14</b>	<b>1.9%</b>
<b>Northshore Site</b>									
First-Time Freshmen	187	278	172	207	227	40	21.4%	20	9.7%
Transfer Student	157	73	156	195	231	74	47.1%	36	18.5%
Continuing Students	988	657	834	975	1,250	262	26.5%	275	28.2%
Readmitted Students	115	38	108	125	160	45	39.1%	35	28.0%
Exchange Students	18	2	2	3	9	-9	0.0%	6	200.0%
Other Students	0	0	0	0	0	0	0.0%	0	0.0%
<b>Total</b>	<b>1,465</b>	<b>1,048</b>	<b>1,272</b>	<b>1,505</b>	<b>1,877</b>	<b>412</b>	<b>28.1%</b>	<b>372</b>	<b>24.7%</b>

## Spring Enrollment History 2005-2009 by Classification

College Wide					
	2005	2006	2007	2008	2009
Freshmen	8,564	5,131	6,048	6,738	7,571
Sophomore	4,024	2,351	2,684	3,067	3,398
Other Undergraduates	4,035	2,455	2,906	3,209	3,473
Preparatory	164	65	142	165	236
<b>Total</b>	<b>16,787</b>	<b>10,002</b>	<b>11,780</b>	<b>13,179</b>	<b>14,678</b>

Number Change	% Change
2005 to 2009	2005 to 2009
-993	-11.6%
-626	-15.6%
-562	-13.9%
72	43.9%
<b>-2,109</b>	<b>-12.6%</b>

Number Change	% Change
2008 to 2009	2008 to 2009
833	12.4%
331	10.8%
264	8.2%
71	43.0%
<b>1,499</b>	<b>11.4%</b>

Percentages					
Freshmen	51%	51%	51%	51%	52%
Sophomore	24%	24%	23%	23%	23%
Other Undergraduates	24%	25%	25%	24%	24%
Preparatory	1%	1%	1%	1%	2%

## Spring Enrollment History 2005-2009 Classification by Campus

City Park Campus					
	2005	2006	2007	2008	2009
Freshmen	5,940	2,958	3,616	4,258	4,642
Sophomore	2,793	1,486	1,698	2,000	2,155
Other Undergraduates	2,573	1,443	1,655	1,948	2,067
Preparatory	135	40	95	135	193
<b>Total</b>	<b>11,441</b>	<b>5,927</b>	<b>7,064</b>	<b>8,341</b>	<b>9,057</b>

Number Change	% Change
2005 to 2009	2005 to 2009
-1,298	-21.9%
-638	-22.8%
-506	-19.7%
58	43.0%
<b>-2,384</b>	<b>-20.8%</b>

Number Change	% Change
2008 to 2009	2008 to 2009
384	9.0%
155	7.8%
119	6.1%
58	43.0%
<b>716</b>	<b>8.6%</b>

West Bank Campus					
	2005	2006	2007	2008	2009
Freshmen	1,631	1,400	1,488	1,415	1,693
Sophomore	788	560	643	660	713
Other Undergraduates	570	387	481	475	533
Preparatory	22	22	44	27	35
<b>Total</b>	<b>3,011</b>	<b>2,369</b>	<b>2,656</b>	<b>2,577</b>	<b>2,974</b>

Number Change	% Change
62	3.8%
-75	-9.5%
-37	-6.5%
13	59.1%
<b>-37</b>	<b>-1.2%</b>

Number Change	% Change
278	19.6%
53	8.0%
58	12.2%
8	29.6%
<b>397</b>	<b>15.4%</b>

Charity School of Nursing					
	2005	2006	2007	2008	2009
Freshmen	7	2	9	1	0
Sophomore	118	114	119	110	118
Other Undergraduates	745	541	659	645	652
Preparatory	0	1	1	0	0
<b>Total</b>	<b>870</b>	<b>658</b>	<b>788</b>	<b>756</b>	<b>770</b>

Number Change	% Change
-7	-100.0%
0	0.0%
-93	-12.5%
0	0.0%
<b>-100</b>	<b>-11.5%</b>

Number Change	% Change
-1	-100.0%
8	7.3%
7	1.1%
0	0.0%
<b>14</b>	<b>1.9%</b>

Northshore Site					
	2005	2006	2007	2008	2009
Freshmen	986	771	935	1,064	1,236
Sophomore	325	191	224	297	412
Other Undergraduates	147	84	111	141	221
Preparatory	7	2	2	3	8
<b>Total</b>	<b>1,465</b>	<b>1,048</b>	<b>1,272</b>	<b>1,505</b>	<b>1,877</b>

Number Change	% Change
250	25.4%
87	26.8%
74	50.3%
1	14.3%
<b>412</b>	<b>28.1%</b>

Number Change	% Change
172	16.2%
115	38.7%
80	56.7%
5	166.7%
<b>372</b>	<b>24.7%</b>

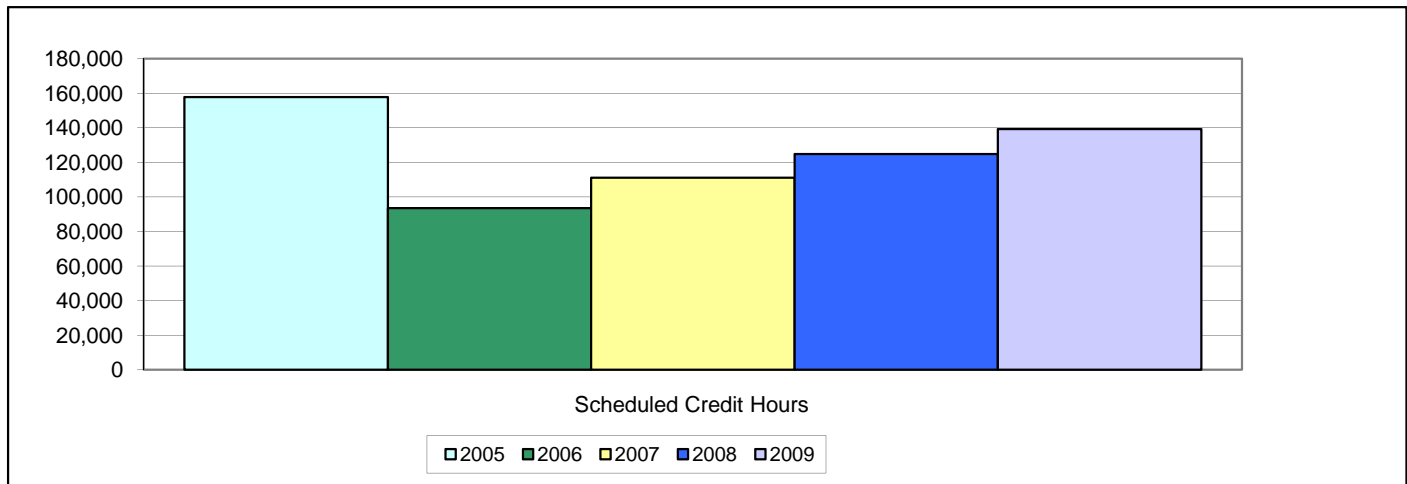
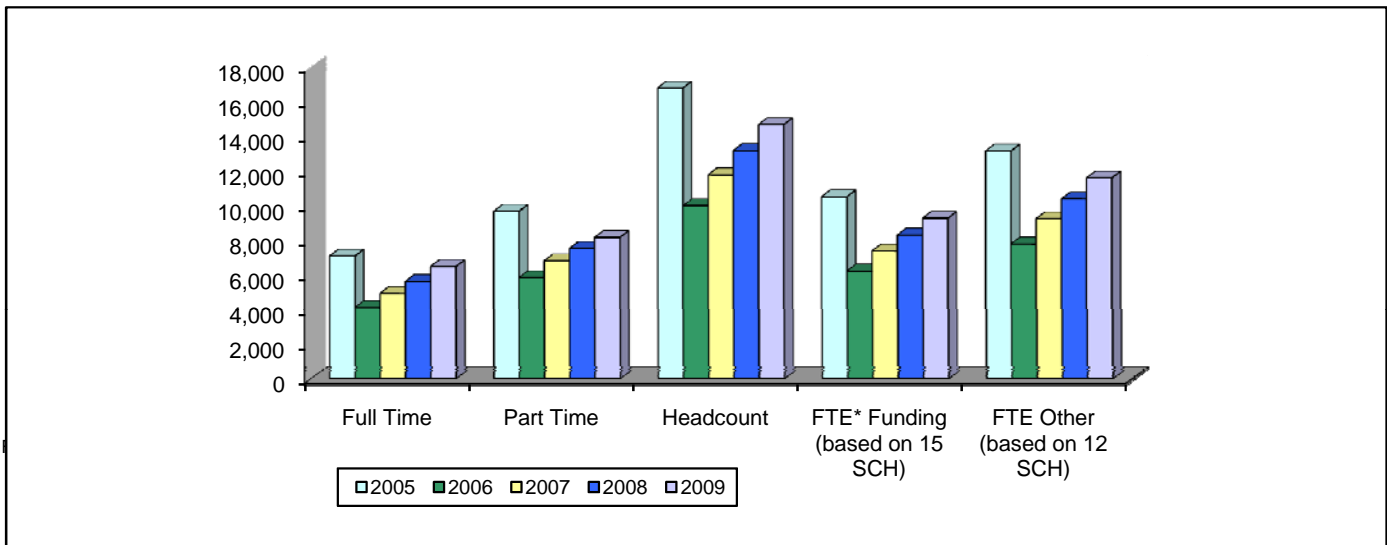
### Spring Enrollment History 2005-2009 by Full/Part Time Status, Headcount, FTE, SCH

College Wide					
	2005	2006	2007	2008	2009
Full Time	7,108	4,134	4,955	5,647	6,500
Part Time	9,679	5,868	6,825	7,532	8,178
Headcount	16,787	10,002	11,780	13,179	14,678
SCH	157,847	93,583	111,038	124,724	139,262
FTE* Funding (based on 15 SCH)	10,523	6,239	7,403	8,315	9,284
FTE Other (based on 12 SCH)	13,154	7,799	9,253	10,394	11,605

Number Change	% Change
2005 to 2009	2005 to 2009
-608	-8.6%
-1,501	-15.5%
-2,109	-12.6%
-18,585	-11.8%
-1,239	-11.8%
-1,549	-11.8%

Number Change	% Change
2008 to 2009	2008 to 2009
853	15.1%
646	8.6%
1,499	11.4%
14,538	11.7%
969	11.7%
1,212	11.7%

Percentages					
Full Time	42%	41%	42%	43%	44%
Part Time	58%	59%	58%	57%	56%



**Spring Enrollment History 2005-2009  
by Full/Part Time Status, Headcount, FTE, SCH by Campus**

<b>City Park Campus</b>					
	2005	2006	2007	2008	2009
Full Time	5,038	2,565	3,121	3,737	4,268
Part Time	6,403	3,362	3,943	4,604	4,789
Headcount	11,441	5,927	7,064	8,341	9,057
SCH	108,504	56,410	67,583	79,385	88,150
FTE* Funding (based on 15 SCH)	7,234	3,761	4,506	5,292	5,877
FTE Other (based on 12 SCH)	9,042	4,701	5,632	6,615	7,346

Number Change	% Change
2005 to 2009	2005 to 2009
-770	-15.3%
-1,614	-25.2%
-2,384	-20.8%
-20,354	-18.8%
-1,357	-18.8%
-1,696	-18.8%

Number Change	% Change
2008 to 2009	2008 to 2009
531	14.2%
185	4.0%
716	8.6%
8,765	11.0%
584	11.0%
730	11.0%

<b>West Bank Campus</b>					
	2005	2006	2007	2008	2009
Full Time	1,240	970	1,102	1,100	1,163
Part Time	1,771	1,399	1,554	1,477	1,811
Headcount	3,011	2,369	2,656	2,577	2,974
SCH	27,399	21,326	23,920	23,818	25,409
FTE* Funding (based on 15 SCH)	1,827	1,422	1,595	1,588	1,694
FTE Other (based on 12 SCH)	2,283	1,777	1,993	1,985	2,117

-77	-6.2%
40	2.3%
-37	-1.2%
-1,990	-7.3%
-133	-7.3%
-166	-7.3%

63	5.7%
334	22.6%
397	15.4%
1,591	6.7%
106	6.7%
133	6.7%

<b>Charity School of Nursing</b>					
	2005	2006	2007	2008	2009
Full Time	271	200	235	195	214
Part Time	599	458	553	561	556
Headcount	870	658	788	756	770
SCH	8,988	6,587	8,081	7,613	8,003
FTE* Funding (based on 15 SCH)	599	439	539	508	534
FTE Other (based on 12 SCH)	749	549	673	634	667

-57	-21.0%
-43	-7.2%
-100	-11.5%
-985	-11.0%
-66	-11.0%
-82	-11.0%

19	9.7%
-5	-0.9%
14	1.9%
390	5.1%
26	5.1%
33	5.1%

<b>Northshore Site</b>					
	2005	2006	2007	2008	2009
Full Time	559	399	497	615	855
Part Time	906	649	775	890	1,022
Headcount	1,465	1,048	1,272	1,505	1,877
SCH	12,956	9,260	11,454	13,908	17,700
FTE* Funding (based on 15 SCH)	864	617	764	927	1,180
FTE Other (based on 12 SCH)	1,080	772	955	1,159	1,475

296	53.0%
116	12.8%
412	28.1%
4,744	36.6%
316	36.6%
395	36.6%

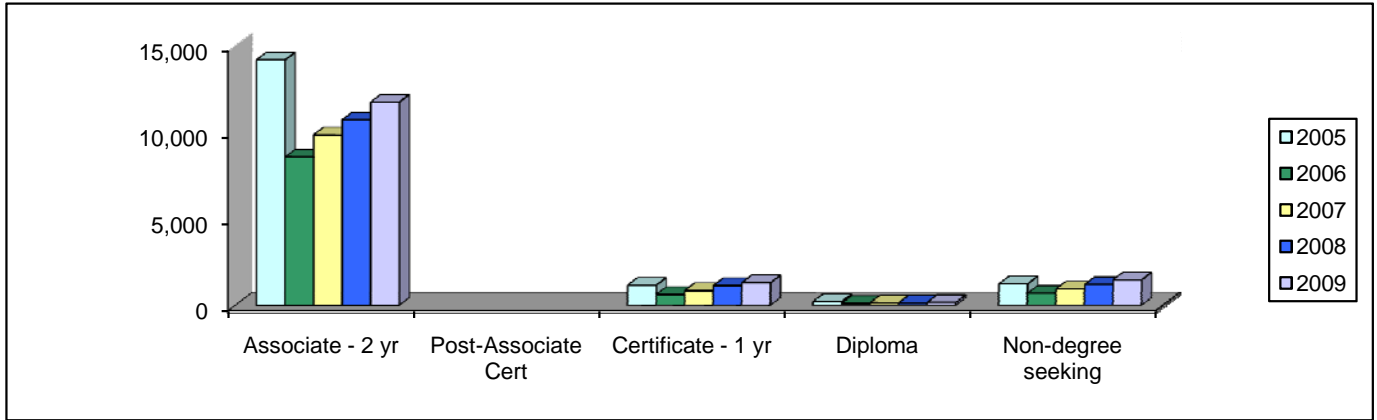
240	39.0%
132	14.8%
372	24.7%
3,792	27.3%
253	27.3%
316	27.3%

## Spring Enrollment History 2005-2009 by Award Sought

College Wide					
	2005	2006	2007	2008	2009
Associate - 2 yr	14,176	8,566	9,842	10,707	11,737
Post-Associate Cert					
Certificate - 1 yr	1,164	629	848	1,137	1,304
Diploma	213	117	145	138	165
Non-degree seeking	1,234	690	945	1,197	1,472
<b>Total</b>	<b>16,787</b>	<b>10,002</b>	<b>11,780</b>	<b>13,179</b>	<b>14,678</b>

Number Change	% Change
2005 to 2009	2005 to 2009
-2,439	-17.2%
N/A	N/A
140	12.0%
N/A	N/A
238	19.3%
<b>-2,109</b>	<b>-12.6%</b>

Number Change	% Change
2008 to 2009	2008 to 2009
1,030	9.6%
N/A	N/A
167	14.7%
27	19.6%
275	23.0%
<b>1,499</b>	<b>11.4%</b>



City Park Campus					
	2005	2006	2007	2008	2009
Associate - 2 yr	9,461	4,957	5,688	6,458	7,108
Post-Associate Cert					
Certificate - 1 yr	889	435	621	826	907
Diploma	94	31	42	54	51
Non-degree seeking	997	504	713	1,003	991
<b>Total</b>	<b>11,441</b>	<b>5,927</b>	<b>7,064</b>	<b>8,341</b>	<b>9,057</b>

Number Change	% Change
2005 to 2009	2005 to 2009
-2,353	-24.9%
N/A	N/A
18	2.0%
N/A	N/A
-6	-0.6%
<b>-2,384</b>	<b>-20.8%</b>

Number Change	% Change
2008 to 2009	2008 to 2009
650	10.1%
N/A	N/A
81	9.8%
-3	-5.6%
-12	-1.2%
<b>716</b>	<b>8.6%</b>

West Bank Campus					
	2005	2006	2007	2008	2009
Associate - 2 yr	2,606	2,033	2,251	2,193	2,280
Post-Associate Cert					
Certificate - 1 yr	188	141	175	188	210
Diploma	44	33	41	33	35
Non-degree seeking	173	162	189	163	449
<b>Total</b>	<b>3,011</b>	<b>2,369</b>	<b>2,656</b>	<b>2,577</b>	<b>2,974</b>

Number Change	% Change
2005 to 2009	2005 to 2009
-326	-12.5%
N/A	N/A
22	11.7%
N/A	N/A
276	159.5%
<b>-37</b>	<b>-1.2%</b>

Number Change	% Change
2008 to 2009	2008 to 2009
87	4.0%
N/A	N/A
22	11.7%
2	6.1%
286	175.5%
<b>397</b>	<b>15.4%</b>

Charity School of Nursing					
	2005	2006	2007	2008	2009
Associate - 2 yr	815	619	740	713	702
Post-Associate Cert					
Certificate - 1 yr	0	0	0	0	0
Diploma	54	39	48	42	68
Non-degree seeking	1	0	0	1	0
<b>Total</b>	<b>870</b>	<b>658</b>	<b>788</b>	<b>756</b>	<b>770</b>

Number Change	% Change
2005 to 2009	2005 to 2009
-113	-13.9%
N/A	N/A
0	0.0%
N/A	N/A
-1	-100.0%
<b>-100</b>	<b>-11.5%</b>

Number Change	% Change
2008 to 2009	2008 to 2009
-11	-1.5%
N/A	N/A
0	0.0%
26	61.9%
-1	0.0%
<b>14</b>	<b>1.9%</b>

Northshore Site					
	2005	2006	2007	2008	2009
Associate - 2 yr	1,294	957	1,163	1,343	1,647
Post-Associate Cert					
Certificate - 1 yr	87	53	52	123	187
Diploma	21	14	14	9	11
Non-degree seeking	63	24	43	30	32
<b>Total</b>	<b>1,465</b>	<b>1,048</b>	<b>1,272</b>	<b>1,505</b>	<b>1,877</b>

Number Change	% Change
2005 to 2009	2005 to 2009
353	27.3%
N/A	N/A
100	114.9%
N/A	N/A
-31	-49.2%
<b>412</b>	<b>28.1%</b>

Number Change	% Change
2008 to 2009	2008 to 2009
304	22.6%
N/A	N/A
64	52.0%
N/A	N/A
2	6.7%
<b>372</b>	<b>24.7%</b>

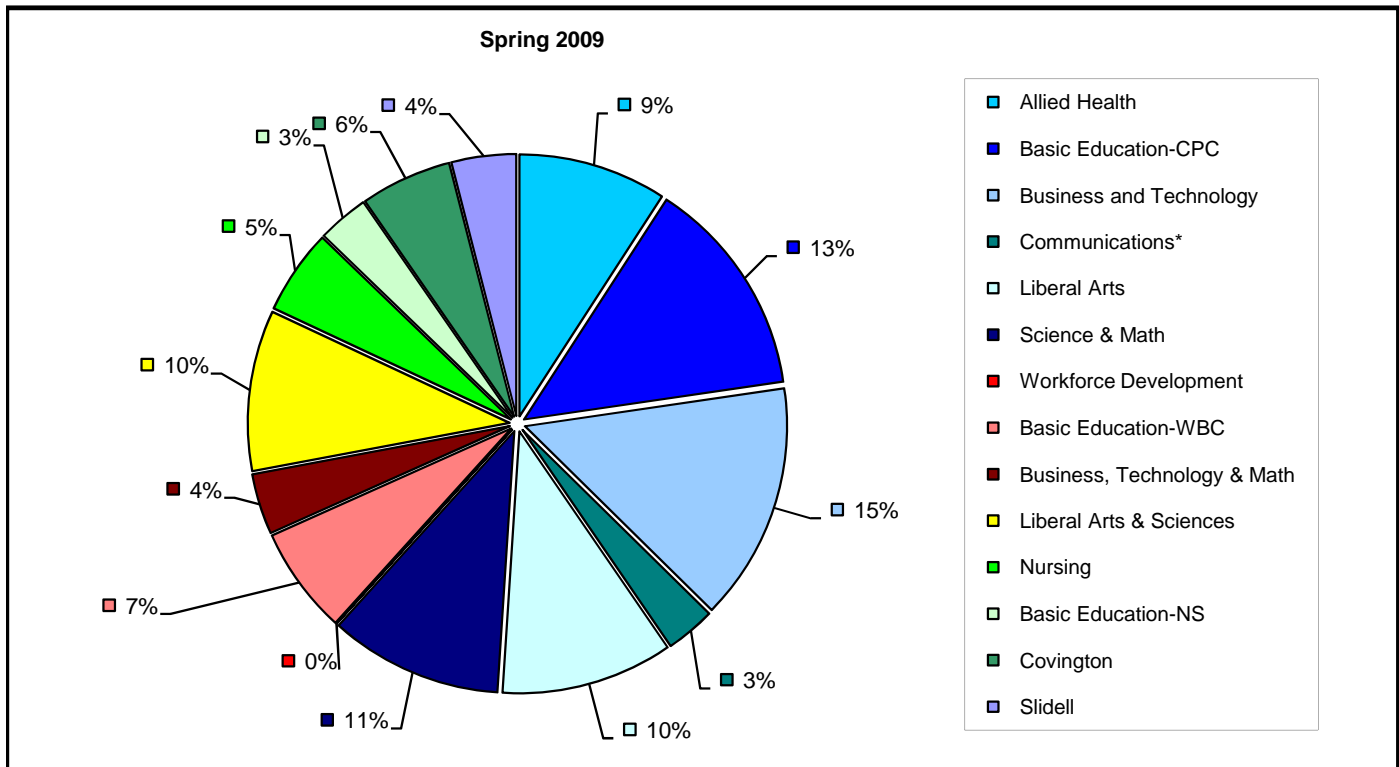
### Spring Enrollment History 2005-2009 by Division

	2005	2006	2007	2008	2009
<b>City Park Campus</b>					
Allied Health	1,951	1,067	1,187	1,347	1,342
Basic Education-CPC	2,362	1,098	1,547	1,955	1,989
Business and Technology	2,526	1,324	1,657	1,837	2,154
Communications*		223	275	332	450
Liberal Arts	2,571	1,093	1,144	1,423	1,554
Science & Math	1,901	1,121	1,253	1,447	1,567
Workforce Development	130	1	1	0	1
<b>Campus Total</b>	<b>11,441</b>	<b>5,927</b>	<b>7,064</b>	<b>8,341</b>	<b>9,057</b>
<b>West Bank Campus</b>					
Basic Education-WBC	648	699	669	699	969
Business, Technology & Math	462	399	482	483	549
Liberal Arts & Sciences	1,901	1,271	1,505	1,395	1,456
<b>Campus Total</b>	<b>3,011</b>	<b>2,369</b>	<b>2,656</b>	<b>2,577</b>	<b>2,974</b>
<b>Nursing</b>	<b>870</b>	<b>658</b>	<b>788</b>	<b>756</b>	<b>770</b>
<b>Northshore Site</b>					
Basic Education-NS	395	311	329	476	463
Covington	359	360	464	499	828
Slidell	711	377	479	530	586
<b>Site Total</b>	<b>1,465</b>	<b>1,048</b>	<b>1,272</b>	<b>1,505</b>	<b>1,877</b>
<b>College Total</b>	<b>16,787</b>	<b>10,002</b>	<b>11,780</b>	<b>13,179</b>	<b>14,678</b>

Number Change	% Change
2005 to 2009	2005 to 2009
-609	-31.2%
-373	-15.8%
-372	-14.7%
N/A	N/A
-1,017	-39.6%
-334	-17.6%
-129	-99.2%
<b>-2,384</b>	<b>-20.8%</b>
321	49.5%
87	18.8%
-445	-23.4%
<b>-37</b>	<b>-1.2%</b>
-100	-11.5%
N/A	N/A
469	130.6%
-125	-17.6%
<b>412</b>	<b>28.1%</b>
<b>-2,109</b>	<b>-12.6%</b>

Number Change	% Change
2008 to 2009	2008 to 2009
-5	-0.4%
34	1.7%
317	17.3%
118	35.5%
131	9.2%
120	8.3%
1	0.0%
<b>716</b>	<b>8.6%</b>
270	38.6%
66	13.7%
61	4.4%
<b>397</b>	<b>15.4%</b>
14	1.9%
-13	-2.7%
329	65.9%
56	10.6%
<b>372</b>	<b>24.7%</b>
<b>1,499</b>	<b>11.4%</b>

\*Spring 2005 data for Communications not available.



## Spring Enrollment History 2005-2009 by Online Status

College Wide	2005	2006	2007	2008	2009
No. of students taking a web class		2,471	2,833	3,199	3,507
Students taking only web classes		879	748	748	773
Average no. of web courses taken			1.8	1.8	1.7
Students in only F2F classes		7,531	8,947	9,980	11,171
<b>Total</b>		<b>10,002</b>	<b>11,780</b>	<b>13,179</b>	<b>14,678</b>

Note: F2F = Face to Face

Number Change 2005 to 2009	% Change 2005 to 2009

Number Change 2008 to 2009	% Change 2008 to 2009
308	9.6%
25	3.3%
0.0	0.0%
1,191	11.9%
<b>1,499</b>	<b>11.4%</b>

Percentages					
Students taking a web class		21.0%	24.0%	24.3%	23.9%
Students taking only web classes		7.5%	6.3%	5.7%	5.3%
Average no. of web courses taken					
Students in only F2F classes		63.9%	76.0%	75.7%	76.1%

Note: Percentages will not add up to 100%.

City Park	2005	2006	2007	2008	2009
No. of students taking a web class		1,826	1,805	2,195	2,188
Students taking only web classes		767	526	582	532
Average no. of web courses taken		2.0	1.9	1.8	1.8
Students in only F2F classes		4,093	5,259	6,146	6,869
<b>Total</b>		<b>5,927</b>	<b>7,064</b>	<b>8,341</b>	<b>9,057</b>

2005 to 2009	2005 to 2009

2008 to 2009	2008 to 2009
-7	-0.3%
-50	-8.6%
0.0	0.0%
723	11.8%
<b>716</b>	<b>8.6%</b>

West Bank	2005	2006	2007	2008	2009
No. of students taking a web class		447	721	666	781
Students taking only web classes		101	206	151	171
Average no. of web courses taken		1.7	1.8	1.7	1.7
Students in only F2F classes		1,920	1,935	1,911	2,193
<b>Total</b>		<b>2,369</b>	<b>2,656</b>	<b>2,577</b>	<b>2,974</b>

2005 to 2009	2005 to 2009

2008 to 2009	2008 to 2009
115	17.3%
20	13.2%
0.0	0.0%
282	14.8%
<b>397</b>	<b>15.4%</b>

Charity School of Nursing	2005	2006	2007	2008	2009
No. of students taking a web class		17	29	23	22
Students taking only web classes		1	0	0	0
Average no. of web courses taken		1.1	1.0	1.0	1.0
Students in only F2F classes		641	759	733	748
<b>Total</b>		<b>658</b>	<b>788</b>	<b>756</b>	<b>770</b>

2005 to 2009	2005 to 2009

2008 to 2009	2008 to 2009
-1	-4.3%
0	0.0%
0.0	0.0%
15	2.0%
<b>14</b>	<b>1.9%</b>

Northshore site	2005	2006	2007	2008	2009
No. of students taking a web class		180	278	315	516
Students taking only web classes		9	16	15	70
Average no. of web courses taken		1.3	1.4	1.3	1.6
Students in only F2F classes		868	994	1,190	1,361
<b>Total</b>		<b>1,048</b>	<b>1,272</b>	<b>1,505</b>	<b>1,877</b>

2005 to 2009	2005 to 2009

2008 to 2009	2008 to 2009
201	63.8%
55	366.7%
0	0.0
171	14.4%
<b>372</b>	<b>24.7%</b>



## Spring Full-time Enrollment History 2005-2009 by Program

College Wide						Number	%	Number	%
	2005	2006	2007	2008	2009	Change 2005 to 2009	Change 2005 to 2009	Change 2008 to 2009	Change 2008 to 2009
Accounting	258	105	169	183	213	-45	-17.4%	30	16.4%
Administrative Office Tech	57	33	37	43	37	-20	-35.1%	-6	-14.0%
Air Conditioning & Refrigeration	0	0	0	0	0	0	0.0%	0	0.0%
American Sign Language Studies	7	5	8	12	9	2	28.6%	-3	-25.0%
Business Administration	543	322	488	555	547	4	0.7%	-8	-1.4%
Business & Management*	136	92	102	127	328	192	141.2%	201	158.3%
Business Training	0	0	0	0	0	0	0.0%	0	0.0%
Care & Development of Young Children	322	179	157	138	153	-169	-52.5%	15	10.9%
Carpentry	0	1	0	0	0	0	0.0%	0	0.0%
Certified Nurse Assistant	0	0	0	0	0	0	0.0%	0	0.0%
CET-Architectural Engineering	72	52	46	58	61	-11	-15.3%	3	5.2%
CET-Civil Construction Technology	17	7	17	18	22	5	29.4%	4	22.2%
CET-Construction Management	28	10	27	25	34	6	21.4%	9	36.0%
Computer Aided Drafting & Design -CADD	44	18	32	46	60	16	36.4%	14	30.4%
Computer Information Technology	178	84	100	102	105	-73	-41.0%	3	2.9%
Computer Network Technology	114	66	46	49	64	-50	-43.9%	15	30.6%
Computer Repair (Certificate)	17	6	10	14	15	-2	-11.8%	1	7.1%
Construction Management Technology	3	0	0	0	0	-3	-100.0%	0	0.0%
Criminal Justice	293	186	206	205	274	-19	-6.5%	69	33.7%
Culinary Arts	103	52	79	70	81	-22	-21.4%	11	15.7%
Culinary Arts -Catering				1	11	N/A	N/A	N/A	N/A
Dental Hygiene	2	2	0	0		-2	-100.0%	0	0.0%
Dental Laboratory Technology	5	0	0	0		-5	-100.0%	0	0.0%
Diagnostic Medical Sonography	50	41	56	55	62	12	24.0%	7	12.7%
Dietetic Technician	27	9	15	20	18	-9	-33.3%	-2	-10.0%
Drafting (Certificate)	1	1	0	0		-1	-100.0%	0	0.0%
Educational Interpreting for the Deaf	27	11	16	10	15	-12	-44.4%	5	50.0%
Electrical Construction Technician	14	14	23	13	24	10	71.4%	11	84.6%
Electrical Electronics Engineering Technology	68	35	46	66	67	-1	-1.5%	1	1.5%
Electronics Repair	2	0	0	0		-2	-100.0%	0	0.0%
Emergency Medical Technology	57	30	43	69	60	3	5.3%	-9	-13.0%
English as a Second Language	166	146	174	215	267	101	60.8%	52	24.2%
Entrepreneurship				1	9	N/A	N/A	N/A	N/A
EST-Biomedical Equip Repair Technology	35	25	16	12	17	-18	-51.4%	5	41.7%
EST-Computer Repair Technology	35	13	14	14	20	-15	-42.9%	6	42.9%
EST-Electronics Repair Technology	7	2	0	0	0	-7	-100.0%	0	0.0%
Fine Arts	46	35	33	49	58	12	26.1%	9	18.4%
Fire Protection Technology	24	7	18	20	37	13	54.2%	17	85.0%
Food Service Careers	0	0	0	0	0	0	0.0%	0	0.0%
Funeral Service Education	99	41	49	33	39	-60	-60.6%	6	18.2%
General Science	163	86	128	170	215	52	31.9%	45	26.5%
General Studies	760	474	538	680	741	-19	-2.5%	61	9.0%
Health Information Technology	49	24	28	24	24	-25	-51.0%	0	0.0%
Horticulture	10	8	7	18	10	0	0.0%	-8	-44.4%
Hospitality Management	52	31	33	47	46	-6	-11.5%	-1	-2.1%
Interior Design	85	51	52	58	52	-33	-38.8%	-6	-10.3%
IT- Machine Tool Technology	1	0	0	0	0	-1	-100.0%	0	0.0%
Legal Secretary	30	17	10	14	21	-9	-30.0%	7	50.0%
Massage Therapy	12	8	12	8	19	N/A	N/A	11	137.5%
Medical Coding - Certificate	34	11	30	27	39	N/A	N/A	12	44.4%
Medical Laboratory Technician	53	28	26	26	30	-23	-43.4%	4	15.4%
Motor Vehicle Technology	131	86	87	86	79	-52	-39.7%	-7	-8.1%
Music	68	29	47	45	52	-16	-23.5%	7	15.6%
Nuclear Medicine Technology	19	15	11	13	13	-6	-31.6%	0	0.0%
Nursing	221	168	187	153	146	-75	-33.9%	-7	-4.6%

\* Formerly named Early Childhood Education

### Spring Full-time Enrollment History 2005-2009 by Program

College Wide						Number Change	% Change	Number Change	% Change
	2005	2006	2007	2008	2009	2005 to 2009	2005 to 2009	2008 to 2009	2008 to 2009
Occupational Therapy Assistant	27	12	11	28	30	3	11.1%	2	7.1%
Ophthalmic Medical Assistant	9	4	4	14	10	1	11.1%	-4	-28.6%
Pastry Art - Certificate	2	2	0	2	7	N/A	N/A	5	0.0%
Performance & Media Arts	108	72	77	104	135	27	25.0%	31	29.8%
Pharmacy Technician	135	49	68	74	80	-55	-40.7%	6	8.1%
Physical Therapist Assisting	176	98	111	123	127	-49	-27.8%	4	3.3%
Practical Nursing	102	59	74	74	105	3	2.9%	31	41.9%
Pre-Nursing	1,293	755	890	1016	1081	-212	-16.4%	65	6.4%
Radiation Therapy (Certificate)	6	6	7	7	12	N/A	N/A	5	71.4%
Radiologic Technology	458	271	331	320	345	-113	-24.7%	25	7.8%
Real Estate Agent			1	1	0	N/A	N/A	N/A	N/A
Respiratory Care Technology	65	36	21	50	54	-11	-16.9%	4	8.0%
Safety & Health Technology	13	15	9	14	12	-1	-7.7%	-2	-14.3%
Surgical Technology	71	23	31	43	44	-27	-38.0%	1	2.3%
Teaching Grades 1-5				60	114	N/A	N/A	54	0.0%
Veterinary Technology	6	18	38	47	58	N/A	N/A	11	23.4%
Visual Communications	92	48	55	70	75	-17	-18.5%	5	7.1%
Website Developer			4	8	14	N/A	N/A	N/A	N/A
Welding Technology	0	0	0	0	0	0	0.0%	0	0.0%
Workforce	0	0	0	0	3	3	0.0%	3	0.0%
<b>Total</b>	<b>7,108</b>	<b>4,134</b>	<b>4,955</b>	<b>5,647</b>	<b>6,500</b>	<b>-608</b>	<b>-8.6%</b>	<b>853</b>	<b>15.1%</b>

### Spring Part-time Enrollment History 2005-2009 by Program

College Wide						Number Change	% Change	Number Change	% Change
	2005	2006	2007	2008	2009	2005 to 2009	2005 to 2009	2008 to 2009	2008 to 2009
Accounting	231	149	162	184	195	-36	-15.6%	11	6.0%
Administrative Office Tech	80	52	41	39	38	-42	-52.5%	-1	-2.6%
Air Conditioning & Refrigeration	2	1	0	0	0	-2	-100.0%	0	0.0%
American Sign Language Studies	32	13	16	12	12	-20	-62.5%	0	0.0%
Business & Management*	134	72	88	97	220	86	64.2%	123	126.8%
Business Administration	565	320	424	448	357	-208	-36.8%	-91	-20.3%
Business Training	1	0	0	0	0	-1	-100.0%	0	0.0%
Care & Development of Young Children**	551	224	241	229	208	-343	-62.3%	-21	-9.2%
Carpentry	4	0	1	0	0	-4	-100.0%	0	0.0%
Certified Nurse Assistant	1	0	0	0	0	-1	-100.0%	0	0.0%
CET-Architectural Engineering	48	38	45	57	42	-6	-12.5%	-15	-26.3%
CET-Civil Construction Technology	29	15	13	22	23	-6	-20.7%	1	4.5%
CET-Construction Management	26	15	26	37	37	11	42.3%	0	0.0%
Computer Aided Drafting & Design -CADD	41	45	69	88	138	97	236.6%	50	56.8%
Computer Information Technology	198	119	102	116	122	-76	-38.4%	6	5.2%
Computer Network Technology	90	65	60	58	68	-22	-24.4%	10	17.2%
Computer Repair (Certificate)	22	7	13	19	20	-2	-9.1%	1	5.3%
Construction Management Technology	5	3	0	0	0	-5	-100.0%	0	0.0%
Criminal Justice	253	175	175	194	174	-79	-31.2%	-20	-10.3%
Culinary Arts	112	65	83	104	105	-7	-6.3%	1	1.0%
Culinary Arts -Catering				3	9	N/A	N/A	N/A	N/A
Dental Hygiene	4	2	2	0	0	-4	-100.0%	0	0.0%
Dental Laboratory Technology	3	1	0	0	0	-3	-100.0%	0	0.0%
Diagnostic Medical Sonography	65	39	61	61	82	17	26.2%	21	34.4%
Dietetic Technician	33	18	17	15	18	-15	-45.5%	3	20.0%

College Wide					
	2005	2006	2007	2008	2009
Drafting (Certificate)	5	1	0	0	0
Educational Interpreting for the Deaf	32	17	24	19	5
Electrical Construction Technician	15	9	32	30	31
Electrical Electronics Engineering	89	40	63	66	72
Electronics Repair	2	1	0	0	
Emergency Medical Technology	121	68	81	60	80
English as a Second Language	80	49	57	80	154
Entrepreneurship				0	5
EST-Biomedical Equip Repair Technology	34	10	20	13	9
EST-Computer Repair Technology	19	9	13	17	23
EST-Electronics Repair Technology	9	2	0	0	1
Fine Arts	111	55	78	85	103
Fire Protection Technology	154	61	75	71	60
Food Service Careers	3	0	0	0	0
Funeral Service Education	70	54	42	45	32
General Science	177	110	151	194	250
General Studies	1,244	708	783	866	943
Health Information Technology	103	57	41	49	45
Horticulture	38	27	30	23	33
Hospitality Management	30	19	24	22	33
Interior Design	92	51	60	59	58
IT- Machine Tool Technology	12	2	0	0	0
Legal Secretary	38	19	24	24	31
Massage Therapy	22	22	31	36	28
Medical Coding - Certificate	58	53	59	84	98
Medical Laboratory Technician	114	51	66	68	69
Motor Vehicle Technology	110	56	82	236	57
Music	65	24	27	37	52
Nuclear Medicine Technology	27	13	22	12	13
Nursing	594	451	553	561	556
Occupational Therapy Assistant	35	16	29	20	22
Ophthalmic Medical Assistant	4	0	1	5	1
Pastry Art - Certificate	3	3	0	3	13
Performance & Media Arts	92	46	57	72	55
Pharmacy Technician	141	65	60	79	101
Physical Therapist Assisting	170	112	115	123	128
Practical Nursing	112	60	72	64	58
Pre-Nursing	1,989	1395	1617	1641	1754
Radiation Therapy (Certificate)	8	9	16	18	29
Radiologic Technology	690	435	462	510	510
Real Estate Agent			6	3	0
Respiratory Care Technology	112	67	82	114	108
Safety & Health Technology	23	17	16	16	16
Surgical Technology	196	100	117	139	159
Teaching Grades 1-5				47	93
Veterinary Technology	9	13	29	57	63
Visual Communications	97	53	66	66	75
Website Developer			3	15	17
Welding Technology	0	0	0	0	0
Workforce	0	0	0	0	267
<b>Total</b>	<b>9,679</b>	<b>5,868</b>	<b>6,825</b>	<b>7,532</b>	<b>8,178</b>

Number Change	% Change
2005 to 2009	2005 to 2009
-5	-100.0%
-27	-84.4%
16	106.7%
-17	-19.1%
-2	-100.0%
-41	-33.9%
74	92.5%
N/A	N/A
-25	-73.5%
4	21.1%
-8	-88.9%
-8	-7.2%
-94	-61.0%
-3	-100.0%
-38	-54.3%
73	41.2%
-301	-24.2%
-58	-56.3%
-5	-13.2%
3	10.0%
-34	-37.0%
-12	-100.0%
-7	-18.4%
6	27.3%
40	69.0%
-45	-39.5%
-53	-48.2%
-13	-20.0%
-14	-51.9%
-38	-6.4%
-13	-37.1%
-3	-75.0%
10	333.3%
-37	-40.2%
-40	-28.4%
-42	-24.7%
-54	-48.2%
-235	-11.8%
21	262.5%
-180	-26.1%
N/A	N/A
-4	-3.6%
-7	-30.4%
-37	-18.9%
N/A	N/A
54	600.0%
-22	-22.7%
N/A	N/A
0	0.0%
267	0.0%
<b>-1,501</b>	<b>-15.5%</b>

Number Change	% Change
2008 to 2009	2008 to 2009
0	0.0%
-14	-73.7%
1	3.3%
6	9.1%
0	0.0%
20	33.3%
74	92.5%
N/A	N/A
-4	-30.8%
6	35.3%
1	0.0%
18	21.2%
-11	-15.5%
0	0.0%
-13	-28.9%
56	28.9%
77	8.9%
-4	-8.2%
10	43.5%
11	50.0%
-1	-1.7%
0	0.0%
7	29.2%
-8	-22.2%
14	16.7%
1	1.5%
-179	-75.8%
15	40.5%
1	8.3%
-5	-0.9%
2	10.0%
-4	0.0%
10	0.0%
-17	-23.6%
22	27.8%
5	4.1%
-6	-9.4%
113	6.9%
11	61.1%
0	0.0%
N/A	N/A
-6	-5.3%
0	0.0%
20	14.4%
46	0.0%
6	10.5%
9	13.6%
N/A	N/A
0	0.0%
267	0.0%
<b>646</b>	<b>8.6%</b>

\* Formerly named Management

\*\* Formerly named Early Childhood Education

Total College Wide					
	2005	2006	2007	2008	2009
Accounting	489	254	331	367	408
Administrative Office Tech	137	85	78	82	75
Air Conditioning & Refrigeration	2	1	0	0	0
American Sign Language Studies	39	18	24	24	21
Business Administration	1,108	642	912	1,003	904
Business & Management	270	164	190	224	548
Business Training	1	0	0	0	0
Care & Development of Young Children	873	403	398	367	361
Carpentry	4	1	1	0	0
Certified Nurse Assistant	1	0	0	0	0
CET-Architectural Engineering	120	90	91	115	103
CET-Civil Construction Technology	46	22	30	40	45
CET-Construction Management	54	25	53	62	71
Computer Aided Drafting & Design -CADD	85	63	101	134	198
Computer Information Technology	376	203	202	218	227
Computer Network Technology	204	131	106	107	132
Computer Repair (Certificate)	39	13	23	33	35
Construction Management Technology	8	3	0	0	0
Criminal Justice	546	361	381	399	448
Culinary Arts	215	117	162	174	186
Culinary Arts -Catering				4	20
Dental Hygiene	6	4	2	0	0
Dental Laboratory Technology	8	1	0	0	0
Diagnostic Medical Sonography	115	80	117	116	144
Dietetic Technician	60	27	32	35	36
Drafting (Certificate)	6	2	0	0	0
Educational Interpreting for the Deaf	59	28	40	29	20
Electrical Construction Technician	29	23	55	43	55
Electrical Electronics Engineering	157	75	109	132	139
Electronics Repair	4	1	0	0	0
Emergency Medical Technology	178	98	124	129	140
English as a Second Language	246	195	231	295	421
Entrepreneurship				1	14
EST-Biomedical Equip Repair Technology	69	35	36	25	26
EST-Computer Repair Technology	54	22	27	31	43
EST-Electronics Repair Technology	16	4	0	0	1
Fine Arts	157	90	111	134	161
Fire Protection Technology	178	68	93	91	97
Food Service Careers	3	0	0	0	0
Funeral Service Education	169	95	91	78	71
General Science	340	196	279	364	465
General Studies	2,004	1182	1321	1546	1684
Health Information Technology	152	81	69	73	69
Horticulture	48	35	37	41	43
Hospitality Management	82	50	57	69	79
Interior Design	177	102	112	117	110
IT- Machine Tool Technology	13	2	0	0	0
Legal Secretary	68	36	34	38	52
Massage Therapy	34	30	43	44	47
Medical Coding - Certificate	92	64	89	111	137
Medical Laboratory Technician	167	79	92	94	99
Motor Vehicle Technology	241	142	169	322	136
Music	133	53	74	82	104

Number Change	% Change
2005 to 2009	2005 to 2009
-81	-16.6%
-62	-45.3%
-2	-100.0%
-18	-46.2%
-204	-18.4%
278	103.0%
-1	-100.0%
-512	-58.6%
-4	-100.0%
-1	-100.0%
-17	-14.2%
-1	-2.2%
17	31.5%
113	132.9%
-149	-39.6%
-72	-35.3%
-4	-10.3%
-8	-100.0%
-98	-17.9%
-29	-13.5%
N/A	N/A
-6	-100.0%
-8	-100.0%
29	25.2%
-24	-40.0%
-6	-100.0%
-39	-66.1%
26	89.7%
-18	-11.5%
-4	-100.0%
-38	-21.3%
175	71.1%
N/A	N/A
-43	-62.3%
-11	-20.4%
-15	-93.8%
4	2.5%
-81	-45.5%
-3	-100.0%
-98	-58.0%
125	36.8%
-320	-16.0%
-83	-54.6%
-5	-10.4%
-3	-3.7%
-67	-37.9%
-13	-100.0%
-16	-23.5%
N/A	N/A
N/A	N/A
-68	-40.7%
-105	-43.6%
-29	-21.8%

Number Change	% Change
2008 to 2009	2008 to 2009
41	11.2%
-7	-8.5%
0	0.0%
-3	-12.5%
-99	-9.9%
324	144.6%
0	0.0%
-6	-1.6%
0	0.0%
0	0.0%
-12	-10.4%
5	12.5%
9	14.5%
64	47.8%
9	4.1%
25	23.4%
2	6.1%
0	0.0%
49	12.3%
12	6.9%
N/A	N/A
0	0.0%
0	0.0%
28	24.1%
1	2.9%
0	0.0%
-9	-31.0%
12	27.9%
7	5.3%
0	0.0%
11	8.5%
126	42.7%
N/A	N/A
1	4.0%
12	38.7%
1	0.0%
27	20.1%
6	6.6%
0	0.0%
-7	-9.0%
101	27.7%
138	8.9%
-4	-5.5%
2	4.9%
10	14.5%
-7	-6.0%
0	0.0%
14	36.8%
3	6.8%
26	23.4%
5	5.3%
-186	-57.8%
22	26.8%

### Spring Enrollment History 2005-2009 by Program (cont.)

Total College Wide						Number Change	% Change	Number Change	% Change
	2005	2006	2007	2008	2009	2005 to 2009	2005 to 2009	2008 to 2009	2008 to 2009
Nuclear Medicine Technology	46	28	33	25	26	-20	-43.5%	1	4.0%
Nursing	815	619	740	714	702	-113	-13.9%	-12	-1.7%
Occupational Therapy Assistant	62	28	40	48	52	-10	-16.1%	4	8.3%
Ophthalmic Medical Assistant	13	4	5	19	11	-2	-15.4%	-8	-42.1%
Pastry Art - Certificate	5	5	0	5	20	N/A	N/A	15	0.0%
Performance & Media Arts	200	118	134	176	190	-10	-5.0%	14	8.0%
Pharmacy Technician	276	114	128	153	181	-95	-34.4%	28	18.3%
Physical Therapist Assisting	346	210	226	246	255	-91	-26.3%	9	3.7%
Practical Nursing	214	119	146	138	163	-51	-23.8%	25	18.1%
Pre-Nursing	3,282	2150	2507	2657	2835	-447	-13.6%	178	6.7%
Radiologic Technology	1,148	706	793	830	855	-293	-25.5%	25	3.0%
Radiation Therapy (Certificate)	14	15	23	25	41	N/A	N/A	16	64.0%
Real Estate Agent			7	4	0	N/A	N/A	N/A	N/A
Respiratory Care Technology	177	103	103	164	162	-15	-8.5%	-2	-1.2%
Safety & Health Technology	36	32	25	30	28	-8	-22.2%	-2	-6.7%
Surgical Technology	267	123	148	182	203	-64	-24.0%	21	11.5%
Teaching Grades 1-5				107	207	N/A	N/A	100	0.0%
Veterinary Technology	15	31	67	104	121	N/A	N/A	17	16.3%
Visual Communications	189	101	121	136	150	-39	-20.6%	14	10.3%
Website Developer			7	23	31	N/A	N/A	N/A	N/A
Welding Technology	0	0	0	0	0	0	0.0%	0	0.0%
Workforce	0	0	0	0	270	N/A	N/A	N/A	N/A
<b>Total</b>	<b>16,787</b>	<b>10,002</b>	<b>11,780</b>	<b>13,179</b>	<b>14,678</b>	<b>-2,109</b>	<b>-12.6%</b>	<b>1,499</b>	<b>11.4%</b>

### Spring Enrollment History 2005-2009 by Campus

Total City Park Campus						Number Change	% Change	Number Change	% Change
	2005	2006	2007	2008	2009	2005 to 2009	2005 to 2009	2008 to 2009	2008 to 2009
Accounting	358	164	206	225	268	-90	-25.1%	43	19.1%
Administrative Office Technology	106	53	52	60	54	-52	-49.1%	-6	-10.0%
Air Conditioning & Refrigeration	2	1	0	0	0	-2	-100.0%	0	0.0%
American Sign Language Studies	30	10	20	20	18	-12	-40.0%	-2	-10.0%
Business & Management	193	99	126	164	370	177	91.7%	206	125.6%
Business Administration	803	394	618	655	611	-192	-23.9%	-44	-6.7%
Business Training	1	0	0	0	0	-1	-100.0%	0	0.0%
Carpentry	4	1	1	0	0	-4	-100.0%	0	0.0%
Certified Nurse Assistant	0	0	0	0	0	0	0.0%	0	0.0%
CET-Architectural Technology	104	66	70	89	79	-25	-24.0%	-10	-11.2%
CET-Civil Construction Technology	41	18	22	31	33	-8	-19.5%	2	6.5%
Care & Development of Young Children	578	230	223	242	239	-339	-58.7%	-3	-1.2%
CET-Construction Management	46	18	41	52	58	12	26.1%	6	11.5%
Computer Aided Drafting & Design -CADD	65	39	77	91	143	78	120.0%	52	57.1%
Computer Information Technology	281	148	138	163	156	-125	-44.5%	-7	-4.3%
Computer Network Technology	187	107	83	81	102	-85	-45.5%	21	25.9%
Computer Repair (Certificate)	34	8	21	28	25	-9	-26.5%	-3	-10.7%
Construction Management Technology	8	3	0	0	0	-8	-100.0%	0	0.0%
Criminal Justice	367	202	223	253	282	-85	-23.2%	29	11.5%
Culinary Arts	192	107	140	145	158	-34	-17.7%	13	9.0%
Culinary Arts -Catering				2	18	N/A	N/A	16	800.0%
Dental Hygiene	3	1	0	0	0	-3	-100.0%	0	0.0%
Dental Laboratory Technology	5	0	0	0	0	-5	-100.0%	0	0.0%

### Spring Enrollment History 2005-2009 by Campus (cont.)

City Park Campus, continued						Number Change	% Change	Number Change	% Change
	2005	2006	2007	2008	2009	2005 to 2009	2005 to 2009	2008 to 2009	2008 to 2009
Diagnostic Medical Sonography	89	53	87	82	103	14	15.7%	21	25.6%
Dietetic Technician	51	22	24	28	31	-20	-39.2%	3	10.7%
Drafting (Certificate)	4	1	0	0	0	-4	-100.0%	0	0.0%
Educational Interpreting for the Deaf	46	20	28	21	17	-29	-63.0%	-4	-19.0%
Electrical Construction Technician	28	21	51	41	52	24	85.7%	11	26.8%
Electrical Electronics Engineering	138	58	88	107	104	-34	-24.6%	-3	-2.8%
Electronics Repair	4	1	0	0	0	-4	-100.0%	0	0.0%
Emergency Medical Technology	151	86	98	77	87	-64	-42.4%	10	13.0%
English as a Second Language	244	195	230	294	417	173	70.9%	123	41.8%
Entrepreneurship				0	8	N/A	N/A	8	0.0%
EST-Biomedical Equip Repair Technology	62	31	34	22	25	-37	-59.7%	3	13.6%
EST-Computer Repair Technology	39	10	16	23	34	-5	-12.8%	11	47.8%
EST-Electronics Repair Technology	15	4	0	0	1	-14	-93.3%	1	0.0%
Fine Arts	106	49	63	85	99	-7	-6.6%	14	16.5%
Fire Protection Technology	119	63	56	84	85	-34	-28.6%	1	1.2%
Food Service Careers	3	0	0	0	0	-3	-100.0%	0	0.0%
Funeral Service Education	142	74	70	65	59	-83	-58.5%	-6	-9.2%
General Science	233	128	167	226	290	57	24.5%	64	28.3%
General Studies	1,358	638	754	911	1,033	-325	-23.9%	122	13.4%
Health Information Technology	118	70	57	55	41	-77	-65.3%	-14	-25.5%
Horticulture	46	34	33	39	42	-4	-8.7%	3	7.7%
Hospitality Management	77	47	51	62	70	-7	-9.1%	8	12.9%
Interior Design	153	81	91	102	99	-54	-35.3%	-3	-2.9%
IT- Machine Tool Technology	12	2	0	0	0	-12	-100.0%	0	0.0%
Legal Secretary	46	26	21	30	40	-6	-13.0%	10	33.3%
Manufacturing	1	0	0	0	0	-1	-100.0%	0	0.0%
Massage Therapy	4	5	6	10	8	N/A	N/A	-2	-20.0%
Medical Coding - Certificate	79	47	67	90	99	N/A	N/A	9	10.0%
Medical Laboratory Technician	123	51	69	68	77	-46	-37.4%	9	13.2%
Motor Vehicle Technology	225	129	158	309	129	-96	-42.7%	-180	-58.3%
Music	120	40	62	65	87	-33	-27.5%	22	33.8%
Nuclear Medicine Technology	32	16	22	20	17	-15	-46.9%	-3	-15.0%
Nursing	0	0	0	0	0	0	0.0%	0	0.0%
Occupational Therapy Assistant	46	24	32	36	37	-9	-19.6%	1	2.8%
Ophthalmic Medical Assistant	12	4	5	18	10	-2	-16.7%	-8	-44.4%
Pastry Art - Certificate	5	5	0	5	17	N/A	N/A	12	0.0%
Performance & Media Arts	176	88	102	143	150	-26	-14.8%	7	4.9%
Pharmacy Technician	207	69	87	105	110	-97	-46.9%	5	4.8%
Physical Therapist Assisting	247	133	135	168	163	-84	-34.0%	-5	-3.0%
Practical Nursing	94	32	42	54	50	-44	-46.8%	-4	-7.4%
Pre-Nursing	2,056	1,171	1,368	1,532	1,621	-435	-21.2%	89	5.8%
Radiation Therapy (Certificate)	14	12	20	12	27	N/A	N/A	15	125.0%
Radiologic Technology	783	426	466	518	541	-242	-30.9%	23	4.4%
Real Estate Agent			7	4	0	N/A	N/A	-4	-100.0%
Respiratory Care Technology	127	67	69	109	93	-34	-26.8%	-16	-14.7%
Safety & Health Technology	34	27	17	26	21	-13	-38.2%	-5	-19.2%
Surgical Technology	189	88	103	127	117	-72	-38.1%	-10	-7.9%
Teaching Grades 1-5				60	126	N/A	N/A	66	0.0%
Veterinary Technology	13	28	48	79	61	N/A	N/A	-18	-22.8%
Visual Communications	162	82	93	108	118	-44	-27.2%	10	9.3%
Website Developer			6	20	22	N/A	N/A	2	10.0%
Welding Technology	0	0	0	0	0	0	0.0%	0	0.0%
Workforce	0	0	0	0	5	N/A	N/A	N/A	N/A
<b>Total</b>	<b>11,441</b>	<b>5,927</b>	<b>7,064</b>	<b>8,341</b>	<b>9,057</b>	<b>-2,384</b>	<b>-20.8%</b>	<b>716</b>	<b>8.6%</b>

### Spring Enrollment History 2005-2009 by Campus (cont.)

Total West Bank Campus						Number Change		%	
	2005	2006	2007	2008	2009	2005 to 2009	2005 to 2009	2008 to 2009	2008 to 2009
Accounting	90	71	97	108	102	12	13.3%	-6	-5.6%
Administrative Office Technology*	29	25	20	16	17	-12	-41.4%	1	6.3%
Air Conditioning & Refrigeration	0	0	0	0	0	0	0.0%	0	0.0%
American Sign Language Studies	6	7	4	3	2	-4	-66.7%	-1	-33.3%
Business Administration	213	187	189	200	170	-43	-20.2%	-30	-15.0%
Business & Management	51	48	46	40	102	51	100.0%	62	155.0%
Business Training	0	0	0	0	0	0	0.0%	0	0.0%
Care & Development of Young Children	220	122	119	94	96	-124	-56.4%	2	2.1%
Carpentry	0	0	0	0	0	0	0.0%	0	0.0%
Certified Nurse Assistant	0	0	0	0	0	0	0.0%	0	0.0%
CET-Architectural Technology	13	15	12	19	20	7	53.8%	1	5.3%
CET-Civil Construction Technology	4	3	6	7	10	6	150.0%	3	42.9%
CET-Construction Management	4	5	10	6	7	3	75.0%	1	16.7%
Computer Aided Drafting & Design -CADD	16	22	21	34	45	29	181.3%	11	32.4%
Computer Information Technology	79	43	47	43	53	-26	-32.9%	10	23.3%
Computer Network Technology	11	16	16	12	16	5	45.5%	4	33.3%
Computer Repair (Certificate)	1	5	0	4	8	7	700.0%	4	0.0%
Construction Management Technology	0	0	0	0	0	0	0.0%	0	0.0%
Criminal Justice	143	131	121	109	117	-26	-18.2%	8	7.3%
Culinary Arts	16	7	14	17	19	3	18.8%	2	11.8%
Culinary Arts -Catering				2	1	N/A	N/A	-1	-50.0%
Dental Hygiene	3	3	2	0		-3	-100.0%	0	0.0%
Dental Laboratory Technology	0	0	0	0		0	0.0%	0	0.0%
Diagnostic Medical Sonography	10	13	19	17	22	12	120.0%	5	29.4%
Dietetic Technician	5	5	6	4	2	-3	-60.0%	-2	-50.0%
Drafting (Certificate)	2	1	0	0	0	-2	-100.0%	0	0.0%
Educational Interpreting for the Deaf	9	6	9	5	3	-6	-66.7%	-2	-40.0%
Electrical Construction Technician	0	2	3	1	2	2	0.0%	1	100.0%
Electrical Electronics Engineering	15	16	17	19	26	11	73.3%	7	36.8%
Electronics Repair	0	0	0	0	0	0	0.0%	0	0.0%
Emergency Medical Technology	25	9	22	21	19	-6	-24.0%	-2	-9.5%
English as a Second Language	1	0	1	0	4	3	0.0%	4	0.0%
Entrepreneurship				0	1	N/A	N/A	1	0.0%
EST-Biomedical Equip Repair Technology	2	1	0	2	1	-1	0.0%	-1	0.0%
EST-Computer Repair Technology	11	9	10	5	7	-4	-36.4%	2	40.0%
EST-Electronics Repair Technology	1	0	0	0	0	-1	-100.0%	0	0.0%
Fine Arts	47	39	39	41	46	-1	-2.1%	5	12.2%
Fire Protection Technology	10	1	3	2	1	-9	-90.0%	-1	-50.0%
Food Service Careers	0	0	0	0	0	0	0.0%	0	0.0%
Funeral Service Education	21	17	17	11	8	-13	-61.9%	-3	-27.3%
General Science	79	59	96	112	133	54	68.4%	21	18.8%
General Studies	442	391	364	376	333	-109	-24.7%	-43	-11.4%
Health Information Technology	23	10	8	9	21	-2	-8.7%	12	133.3%
Horticulture	1	0	1	2	0	-1	-100.0%	-2	0.0%
Hospitality Management	3	1	4	4	5	2	66.7%	1	25.0%
Interior Design	15	17	12	12	8	-7	-46.7%	-4	-33.3%
IT- Machine Tool Technology	0	0	0	0	0	0	0.0%	0	0.0%
Legal Secretary	20	7	11	8	9	-11	-55.0%	1	12.5%
Massage Therapy	30	24	36	34	35	5	16.7%	1	2.9%
Medical Coding - Certificate	5	11	20	12	16	11	220.0%	4	33.3%
Medical Laboratory Technician	28	21	14	19	10	-18	-64.3%	-9	-47.4%
Motor Vehicle Technology	8	11	10	7	4	-4	-50.0%	-3	-42.9%
Music	7	8	6	9	11	4	57.1%	2	22.2%
Nuclear Medicine Technology	7	4	6	2	4	-3	-42.9%	2	100.0%

Total West Bank Campus					
	2005	2006	2007	2008	2009
Nursing	0	0	0	0	0
Occupational Therapy Assistant	9	3	4	5	5
Ophthalmic Medical Assistant	0	0	0	0	0
Pastry Art - Certificate	0	0	0	0	1
Performance & Media Arts	17	20	25	22	27
Pharmacy Technician	54	37	35	37	41
Physical Therapist Assisting	69	50	62	49	51
Practical Nursing	45	34	41	33	34
Pre-Nursing	789	620	757	689	718
Radiation Therapy (Certificate)	0	2	2	9	7
Radiologic Technology	193	153	191	167	165
Real Estate Agent			0	0	0
Respiratory Care Technology	42	18	22	28	34
Safety & Health Technology	1	4	4	5	6
Surgical Technology	48	24	28	34	31
Teaching Grades 1-5				20	33
Veterinary Technology	1	1	10	11	14
Visual Communications*	17	10	16	19	22
Website Developer			1	1	5
Welding Technology	0	0	0	0	0
Workforce	0	0	0	0	264
<b>Total</b>	<b>3,011</b>	<b>2,369</b>	<b>2,656</b>	<b>2,577</b>	<b>2,974</b>

Number Change 2005 to 2009	% Change 2005 to 2009
0	0.0%
-4	-44.4%
0	0.0%
1	0.0%
10	58.8%
-13	-24.1%
-18	-26.1%
-11	-24.4%
-71	-9.0%
7	0
-28	-14.5%
N/A	N/A
-8	-19.0%
5	500.0%
-17	-35.4%
N/A	N/A
N/A	N/A
5	29.4%
N/A	N/A
0	0.0%
N/A	N/A
-37	-1.2%

Number Change 2008 to 2009	% Change 2008 to 2009
0	0.0%
0	0.0%
0	0.0%
1	0.0%
5	22.7%
4	10.8%
2	4.1%
1	3.0%
29	4.2%
-2	-22.2%
-2	-1.2%
0	0.0%
6	21.4%
1	20.0%
-3	-8.8%
13	0.0%
3	27.3%
3	15.8%
4	400.0%
0	0.0%
N/A	N/A
397	15.4%

Total Charity Campus					
	2005	2006	2007	2008	2009
Certified Nurse Assistant	1	0	0	0	0
Nursing	815	619	740	714	702
Practical Nursing	54	39	48	42	68
<b>Total</b>	<b>870</b>	<b>658</b>	<b>788</b>	<b>756</b>	<b>770</b>

Number Change 2005 to 2009	% Change 2005 to 2009
-1	-100.0%
-113	-13.9%
14	25.9%
-100	-11.5%

Number Change 2008 to 2009	% Change 2008 to 2009
0	0.0%
-12	-1.7%
26	61.9%
14	1.9%

Total Northshore Site					
	2005	2006	2007	2008	2009
Accounting	41	19	28	34	38
Administrative Office Technology*	2	7	6	6	4
Air Conditioning & Refrigeration	0	0	0	0	0
American Sign Language Studies	3	1	0	1	1
Business Administration	92	61	105	148	123
Business & Management	26	17	18	20	76
Business Training	0	0	0	0	0
Care & Development of Young Children	75	51	56	31	26
Carpentry	0	0	0	0	0
Certified Nurse Assistant	0	0	0	0	0
CET-Architectural Technology	3	9	9	7	4
CET-Civil Construction Technology	1	1	2	2	2
CET-Construction Management	4	2	2	4	6
Computer Aided Drafting & Design -CADD	4	2	3	9	10
Computer Information Technology	16	12	17	12	18
Computer Network Technology	6	8	7	14	14
Computer Repair (Certificate)	4	0	2	1	2
Construction Management Technology	0	0	0	0	0
Criminal Justice	36	28	37	37	49
Culinary Arts	7	3	8	12	9

Number Change 2005 to 2009	% Change 2005 to 2009
-3	-7.3%
2	100.0%
0	0.0%
-2	-66.7%
31	33.7%
50	192.3%
0	0.0%
-49	-65.3%
0	0.0%
0	0.0%
1	33.3%
1	100.0%
2	0.0%
6	150.0%
2	12.5%
8	133.3%
-2	0.0%
0	0.0%
13	36.1%
2	28.6%

Number Change 2008 to 2009	% Change 2008 to 2009
4	11.8%
-2	-33.3%
0	0.0%
0	0.0%
-25	-16.9%
0	0.0%
0	0.0%
0	0.0%
-3	-42.9%
0	0.0%
2	50.0%
1	11.1%
6	50.0%
0	0.0%
1	0.0%
0	0.0%
12	32.4%
-3	-25.0%



### Spring Enrollment History 2005-2009 by Campus (cont.)

Northshore Site						Number Change	% Change	Number Change	% Change
	2005	2006	2007	2008	2009	2005 to 2009	2005 to 2009	2008 to 2009	2008 to 2009
Culinary Arts -Catering				0	1	N/A	N/A	1	0.0%
Dental Hygiene	0	0	0	0	0	0	0.0%	0	0.0%
Dental Laboratory Technology	3	1	0	0	0	-3	-100.0%	0	0.0%
Diagnostic Medical Sonography	16	14	11	17	19	3	18.8%	2	11.8%
Dietetic Technician	4	0	2	3	3	-1	-25.0%	0	0.0%
Drafting (Certificate)	0	0	0	0	0	0	0.0%	0	0.0%
Educational Interpreting for the Deaf	4	2	3	3	0	-4	-100.0%	-3	-100.0%
Electrical Construction Technician	1	0	1	1	1	0	0.0%	0	0.0%
Electrical Electronics Engineering	4	1	4	6	9	5	125.0%	3	50.0%
Electronics Repair	0	0	0	0	0	0	0.0%	0	0.0%
Emergency Medical Technology	2	3	4	31	34	32	1600.0%	3	9.7%
English as a Second Language	1	0	0	1	0	-1	-100.0%	-1	0.0%
Entrepreneurship				1	5	N/A	N/A	4	400.0%
EST-Biomedical Equip Repair Technology	5	3	2	1	0	-5	-100.0%	-1	-100.0%
EST-Computer Repair Technology	4	3	1	3	2	-2	-50.0%	-1	-33.3%
EST-Electronics Repair Technology	0	0	0	0	0	0	0.0%	0	0.0%
Fine Arts	4	2	9	8	16	12	0.0%	8	100.0%
Fire Protection Technology	49	4	34	5	11	-38	-77.6%	6	120.0%
Food Service Careers	0	0	0	0	0	0	0.0%	0	0.0%
Funeral Service Education	6	4	4	2	4	-2	0.0%	2	100.0%
General Science	28	9	16	26	42	14	50.0%	16	61.5%
General Studies	204	153	203	259	318	114	55.9%	59	22.8%
Health Information Technology	11	1	4	9	7	-4	-36.4%	-2	-22.2%
Horticulture	1	1	3	0	1	0	0.0%	1	0.0%
Hospitality Management	2	2	2	3	4	2	100.0%	1	33.3%
Interior Design	9	4	9	3	3	-6	-66.7%	0	0.0%
IT- Machine Tool Technology	0	0	0	0	0	0	0.0%	0	0.0%
Legal Secretary	2	3	2	0	3	1	50.0%	3	0.0%
Machine Tool Technology (Certificate)*		0	0	0	0	N/A	N/A	0	0.0%
Massage Therapy	0	1	1	0	4	4	0.0%	4	0.0%
Medical Coding - Certificate	8	6	2	9	22	14	175.0%	13	144.4%
Medical Laboratory Technician	16	7	9	7	12	-4	-25.0%	5	71.4%
Motor Vehicle Technology	8	2	1	6	3	-5	0.0%	-3	-50.0%
Music	6	5	6	7	6	0	0.0%	-1	-14.3%
Nuclear Medicine Technology	7	8	5	3	5	-2	0.0%	2	66.7%
Nursing	0	0	0	0	0	0	0.0%	0	0.0%
Occupational Therapy Assistant	7	1	4	7	10	3	42.9%	3	42.9%
Ophthalmic Medical Assistant	1	0	0	1	1	0	0.0%	0	0.0%
Pastry Art - Certificate	0	0	0	0	2	2	0.0%	2	0.0%
Performance & Media Arts	7	10	7	11	13	6	85.7%	2	18.2%
Pharmacy Technician	15	8	6	11	30	15	100.0%	19	172.7%
Physical Therapist Assisting	30	27	29	29	41	11	36.7%	12	41.4%
Practical Nursing	21	14	15	9	11	-10	-47.6%	2	22.2%
Pre-Nursing	437	359	382	436	496	59	13.5%	60	13.8%
Radiation Therapy (Certificate)	0	1	1	4	7	7	0.0%	3	75.0%
Radiologic Technology	172	127	136	145	149	-23	-13.4%	4	2.8%
Real Estate Agent			0	0	0	N/A	N/A	0	0.0%
Respiratory Care Technology	8	18	12	27	35	27	337.5%	8	29.6%
Safety & Health Technology	1	1	4	0	1	0	0.0%	1	0.0%
Surgical Technology	30	11	17	21	55	25	83.3%	34	161.9%
Teaching Grades 1-5				27	48	N/A	N/A	21	77.8%
Veterinary Technology	1	2	9	14	46	N/A	N/A	32	228.6%
Visual Communications	10	9	12	9	10	0	0.0%	1	11.1%
Website Developer			0	2	4	N/A	N/A	2	0.0%
Welding Technology	0	0	0	0	0	0	0.0%	0	0.0%
Workforce	0	0	0	0	1	1	0.0%	1	0.0%
<b>Total</b>	<b>1,465</b>	<b>1,048</b>	<b>1,272</b>	<b>1,505</b>	<b>1,877</b>	<b>412</b>	<b>28.1%</b>	<b>372</b>	<b>24.7%</b>

### Spring Enrollment History 2005-2009 by Program Ranked by Student Total

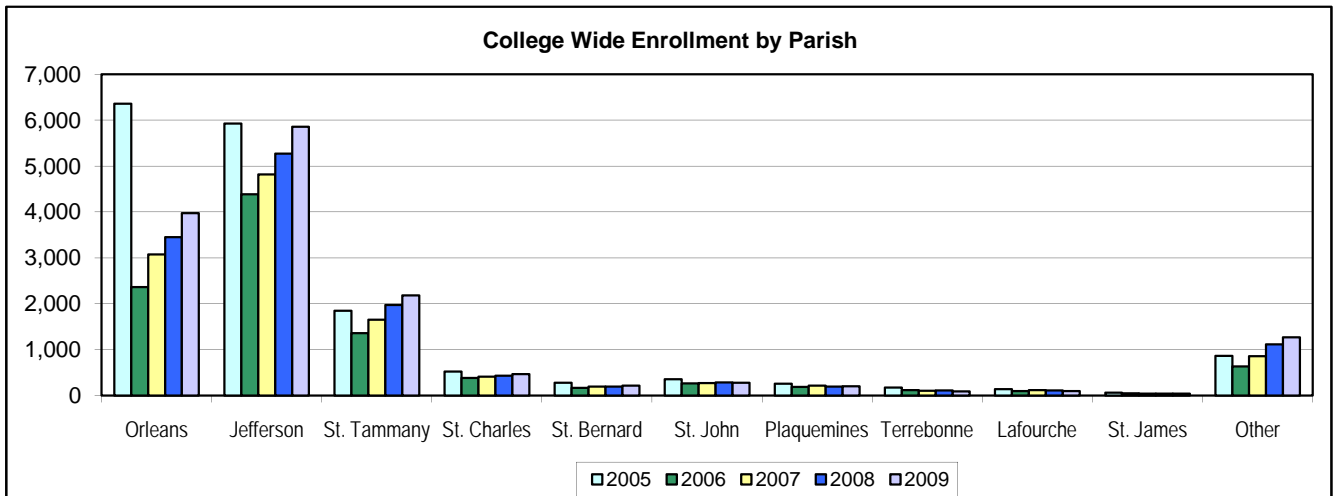
College Wide						Number	%	Number	%
	2005	2006	2007	2008	2009	Change 2005 to 2009	Change 2005 to 2009	Change 2008 to 2009	Change 2008 to 2009
Pre-Nursing	3,282	2150	2507	2657	2835	-447	-13.6%	178	6.7%
General Studies	2,004	1182	1321	1546	1684	-320	-16.0%	138	8.9%
Business Administration	1,108	642	912	1,003	904	-204	-18.4%	-99	-9.9%
Radiologic Technology	1,148	706	793	830	855	-293	-25.5%	25	3.0%
Nursing	815	619	740	714	702	-113	-13.9%	-12	-1.7%
Business & Management	270	164	190	224	548	278	103.0%	324	144.6%
General Science	340	196	279	364	465	125	36.8%	101	27.7%
Criminal Justice	546	361	381	399	448	-98	-17.9%	49	12.3%
English as a Second Language	246	195	231	295	421	175	71.1%	126	42.7%
Accounting	489	254	331	367	408	-81	-16.6%	41	11.2%
Care & Development of Young Children	873	403	398	367	361	-512	-58.6%	-6	-1.6%
Workforce	0	0	0	0	270	N/A	N/A	N/A	N/A
Physical Therapist Assisting	346	210	226	246	255	-91	-26.3%	9	3.7%
Computer Information Technology	376	203	202	218	227	-149	-39.6%	9	4.1%
Teaching Grades 1-5				107	207	N/A	N/A	100	93.5%
Surgical Technology	267	123	148	182	203	-64	-24.0%	21	11.5%
Computer Aided Drafting & Design -CADD	85	63	101	134	198	113	132.9%	64	47.8%
Performance & Media Arts	200	118	134	176	190	-10	-5.0%	14	8.0%
Culinary Arts	215	117	162	174	186	-29	-13.5%	12	6.9%
Pharmacy Technician	276	114	128	153	181	-95	-34.4%	28	18.3%
Practical Nursing	214	119	146	138	163	-51	-23.8%	25	18.1%
Respiratory Care Technology	177	103	103	164	162	-15	-8.5%	-2	-1.2%
Fine Arts	157	90	111	134	161	4	2.5%	27	20.1%
Visual Communications	189	101	121	136	150	-39	-20.6%	14	10.3%
Diagnostic Medical Sonography	115	80	117	116	144	29	25.2%	28	24.1%
Emergency Medical Technology	178	98	124	129	140	-38	-21.3%	11	8.5%
Electrical Electronics Engineering	157	75	109	132	139	-18	-11.5%	7	5.3%
Medical Coding - Certificate	92	64	89	111	137	45	48.9%	26	23.4%
Motor Vehicle Technology	241	142	169	322	136	-105	-43.6%	-186	-57.8%
Computer Network Technology	204	131	106	107	132	-72	-35.3%	25	23.4%
Veterinary Technology	15	31	67	104	121	106	706.7%	17	16.3%
Interior Design	177	102	112	117	110	-67	-37.9%	-7	-6.0%
Music	133	53	74	82	104	-29	-21.8%	22	26.8%
CET-Architectural Engineering	120	90	91	115	103	-17	-14.2%	-12	-10.4%
Medical Laboratory Technician	167	79	92	94	99	-68	-40.7%	5	5.3%
Fire Protection Technology	178	68	93	91	97	-81	-45.5%	6	6.6%
Hospitality Management	82	50	57	69	79	-3	-3.7%	10	14.5%
Administrative Office Tech	137	85	78	82	75	-62	-45.3%	-7	-8.5%
CET-Construction Management	54	25	53	62	71	17	31.5%	9	14.5%
Funeral Service Education	169	95	91	78	71	-98	-58.0%	-7	-9.0%
Health Information Technology	152	81	69	73	69	N/A	N/A	-4	-5.5%
Electrical Construction Technician	29	23	55	43	55	26	89.7%	12	27.9%
Legal Secretary	68	36	34	38	52	-16	-23.5%	14	36.8%
Occupational Therapy Assistant	62	28	40	48	52	-10	-16.1%	4	8.3%
Massage Therapy	34	30	43	44	47	13	38.2%	3	6.8%
CET-Civil Construction Technology	46	22	30	40	45	-1	-2.2%	5	12.5%
EST-Computer Repair Technology	54	22	27	31	43	-11	-20.4%	12	38.7%
Horticulture	48	35	37	41	43	-5	-10.4%	2	4.9%
Radiation Therapy (Certificate)	14	15	23	25	41	27	192.9%	16	64.0%
Dietetic Technician	60	27	32	35	36	-24	-40.0%	1	2.9%
Computer Repair (Certificate)	39	13	23	33	35	-4	-10.3%	2	6.1%
Website Developer			7	23	31	N/A	N/A	8	34.8%
Safety & Health Technology	36	32	25	30	28	-8	-22.2%	-2	-6.7%
EST-Biomedical Equip Repair Technology	69	35	36	25	26	-43	-62.3%	1	4.0%
Nuclear Medicine Technology	46	28	33	25	26	-20	-43.5%	1	4.0%
American Sign Language Studies	39	18	24	24	21	-18	-46.2%	-3	-12.5%
Culinary Arts -Catering				4	20	N/A	N/A	16	400.0%

### Spring Enrollment History 2005-2009 by Program Ranked by Student Total (cont.)

College Wide						Number Change	% Change	Number Change	% Change
	2005	2006	2007	2008	2009	2005 to 2009	2005 to 2009	2008 to 2009	2008 to 2009
Educational Interpreting for the Deaf	59	28	40	29	20	-39	-66.1%	-9	0.0%
Pastry Art - Certificate	5	5	0	5	20	N/A	N/A	15	300.0%
Entrepreneurship				1	14	N/A	N/A	13	1300.0%
Ophthalmic Medical Assistant	13	4	5	19	11	-2	-15.4%	-8	-42.1%
EST-Electronics Repair Technology	16	4	0	0	1	-15	-93.8%	1	0.0%
Air Conditioning & Refrigeration	2	1	0	0	0	-2	-100.0%	0	0.0%
Business Training	1	0	0	0	0	-1	-100.0%	0	0.0%
Carpentry	4	1	1	0	0	-4	-100.0%	0	0.0%
Certified Nurse Assistant	1	0	0	0	0	-1	-100.0%	0	0.0%
Construction Management Technology	8	3	0	0	0	-8	-100.0%	0	0.0%
Dental Hygiene	6	4	2	0	0	-6	-100.0%	0	0.0%
Dental Laboratory Technology	8	1	0	0	0	-8	-100.0%	0	0.0%
Electronics Repair	4	1	0	0	0	-4	-100.0%	0	0.0%
Food Service Careers	3	0	0	0	0	-3	-100.0%	0	0.0%
IT- Machine Tool Technology	13	2	0	0	0	-13	0.0%	0	0.0%
Real Estate Agent			7	4	0	N/A	N/A	-4	0.0%
Welding Technology	0	0	0	0	0	0	0.0%	0	0.0%
Drafting (Certificate)	6	2	0	0	0	-6	0.0%	0	0.0%
<b>Total</b>	<b>16,787</b>	<b>10,002</b>	<b>11,780</b>	<b>13,179</b>	<b>14,678</b>	<b>-2,109</b>	<b>-12.6%</b>	<b>1,499</b>	<b>11.4%</b>

### Spring Enrollment History 2005-2009 by Parish

College Wide						Number Change	% Change	Number Change	% Change
	2005	2006	2007	2008	2009	2005 to 2009	2005 to 2009	2008 to 2009	2008 to 2009
Orleans	6,357	2,362	3,078	3,448	3,976	-2,381	-37.5%	528	15.3%
Jefferson	5,925	4,383	4,820	5,271	5,860	-65	-1.1%	589	11.2%
St. Tammany	1,846	1,362	1,655	1,973	2,179	333	18.0%	206	10.4%
St. Charles	522	380	413	431	470	-52	-10.0%	39	9.0%
St. Bernard	281	166	197	192	214	-67	-23.8%	22	11.5%
St. John	353	266	274	287	278	-75	-21.2%	-9	-3.1%
Plaquemines	259	188	219	193	203	-56	-21.6%	10	5.2%
Terrebonne	177	118	103	112	89	-88	-49.7%	-23	-20.5%
Lafourche	139	95	116	112	99	-40	-28.8%	-13	-11.6%
St. James	66	49	44	42	39	-27	-40.9%	-3	-7.1%
Other	862	633	861	1,118	1,271	409	47.4%	153	13.7%
<b>Total</b>	<b>16,787</b>	<b>10,002</b>	<b>11,780</b>	<b>13,179</b>	<b>14,678</b>	<b>-2,109</b>	<b>-12.6%</b>	<b>1,499</b>	<b>11.4%</b>



### Spring Enrollment History 2005-2009 by Parish

City Park					
	2005	2006	2007	2008	2009
Orleans	5,333	1,644	2,254	2,701	3,119
Jefferson	3,649	2,582	2,831	3,286	3,629
St. Tammany	441	417	495	650	574
St. Charles	462	315	335	347	386
St. Bernard	208	102	129	140	158
St. John	332	242	249	259	239
Plaquemines	82	51	68	44	43
Terrebonne	156	98	80	92	70
Lafourche	123	84	95	89	69
St. James	63	45	37	37	24
Other	592	347	491	696	746
<b>Total</b>	<b>11,441</b>	<b>5,927</b>	<b>7,064</b>	<b>8,341</b>	<b>9,057</b>

Number Change to 2009	% Change to 2009
-2,214	-41.5%
-20	-0.5%
133	30.2%
-76	-16.5%
-50	-24.0%
-93	-28.0%
-39	-47.6%
-86	-55.1%
-54	-43.9%
-39	-61.9%
154	26.0%
<b>-2,384</b>	<b>-20.8%</b>

Number Change to 2009	% Change to 2009
418	15.5%
343	10.4%
-76	-11.7%
39	11.2%
18	12.9%
-20	-7.7%
-1	-2.3%
-22	-23.9%
-20	-22.5%
-13	-35.1%
50	7.2%
<b>716</b>	<b>8.6%</b>

West Bank					
	2005	2006	2007	2008	2009
Orleans	766	543	625	574	676
Jefferson	1,902	1,527	1,671	1,622	1,839
St. Tammany	11	20	38	34	34
St. Charles	36	41	39	43	52
St. Bernard	15	13	14	8	14
St. John	6	11	12	8	24
Plaquemines	163	118	132	138	147
Terrebonne	15	13	12	10	12
Lafourche	14	9	13	17	14
St. James	1	1	2	1	12
Other	82	73	98	122	150
<b>Total</b>	<b>3,011</b>	<b>2,369</b>	<b>2,656</b>	<b>2,577</b>	<b>2,974</b>

Number Change to 2009	% Change to 2009
-90	-11.7%
-63	-3.3%
23	209.1%
16	44.4%
-1	-6.7%
18	300.0%
-16	-9.8%
-3	-20.0%
0	0.0%
11	1100.0%
68	82.9%
<b>-37</b>	<b>-1.2%</b>

Number Change to 2009	% Change to 2009
102	17.8%
217	13.4%
0	0.0%
9	20.9%
6	75.0%
16	200.0%
9	6.5%
2	20.0%
-3	-17.6%
11	1100.0%
28	23.0%
<b>397</b>	<b>15.4%</b>

Charity School of Nursing					
	2005	2006	2007	2008	2009
Orleans	243	153	184	158	150
Jefferson	355	258	302	340	345
St. Tammany	127	113	130	111	126
St. Charles	22	22	37	40	29
St. Bernard	55	45	48	36	28
St. John	14	13	12	14	12
Plaquemines	14	18	19	9	12
Terrebonne	5	7	10	9	5
Lafourche	2	1	8	6	16
St. James	2	3	5	4	2
Other	31	25	33	29	45
<b>Total</b>	<b>870</b>	<b>658</b>	<b>788</b>	<b>756</b>	<b>770</b>

Number Change to 2009	% Change to 2009
-93	-38.3%
-10	-2.8%
-1	-0.8%
7	31.8%
-27	-49.1%
-2	-14.3%
-2	-14.3%
0	0.0%
14	700.0%
0	0.0%
14	45.2%
<b>-100</b>	<b>-11.5%</b>

Number Change to 2009	% Change to 2009
-8	-5.1%
5	1.5%
15	13.5%
-11	-27.5%
-8	-22.2%
-2	-14.3%
3	33.3%
-4	-44.4%
10	166.7%
-2	-50.0%
16	55.2%
<b>14</b>	<b>1.9%</b>

Slidell/Northshore					
	2005	2006	2007	2008	2009
Orleans	15	22	15	15	31
Jefferson	19	16	16	23	47
St. Tammany	1,267	812	992	1,178	1,445
St. Charles	2	2	2	1	3
St. Bernard	3	6	6	8	14
St. John	1	0	1	3	3
Plaquemines	0	1	0	2	1
Tangipahoa	71	84	115	143	164
Terrebonne	1	0	1	1	2
Lafourche	0	1	0	0	0
St. James	0	0	0	0	1
Washington	58	76	81	82	100
Other	28	28	43	49	66
<b>Total</b>	<b>1,465</b>	<b>1,048</b>	<b>1,272</b>	<b>1,505</b>	<b>1,877</b>

Number Change to 2009	% Change to 2009
16	106.7%
28	147.4%
178	14.0%
1	50.0%
11	366.7%
2	0.0%
1	0.0%
93	131.0%
1	100.0%
0	0.0%
1	0.0%
42	72.4%
38	135.7%
<b>412</b>	<b>28.1%</b>

Number Change to 2009	% Change to 2009
16	106.7%
24	104.3%
267	22.7%
2	200.0%
6	75.0%
0	0.0%
-1	0.0%
21	14.7%
1	100.0%
0	0.0%
1	0.0%
18	22.0%
17	34.7%
<b>372</b>	<b>24.7%</b>

### Spring Enrollment History 2005-2009 by Top "Feeder" High Schools

College Wide						Number Change	% Change	Number Change	% Change
	2005	2006	2007	2008	2009	2005 to 2009	2005 to 2009	2008 to 2009	2008 to 2009
Alfred T Bonnabel	35	54	23	15	35	0	0.0%	20	133.3%
Amite High School	2	2	3	5	4	2	100.0%	-1	-20.0%
Archbishop Chapelle	3	18	5	4	4	1	33.3%	0	0.0%
Archbishop Rummel	8	20	8	10	12	4	50.0%	2	20.0%
Archbishop Shaw	6	30	2	6	7	1	16.7%	1	16.7%
Belle Chasse	6	19	14	5	10	4	66.7%	5	100.0%
Bogalusa High School West	5	6	6	4	6	1	20.0%	2	50.0%
Booker T. Washington	19	2	8	4	8	-11	-57.9%	4	100.0%
Chalmette	4	4	6	4	10	6	150.0%	6	150.0%
Covington	15	27	12	14	17	2	13.3%	3	21.4%
Destrehan	16	36	13	9	12	-4	-25.0%	3	33.3%
East Jefferson	22	23	11	16	20	-2	-9.1%	4	25.0%
EAST SAINT JOHN	8	19	17	14	18	10	125.0%	4	28.6%
Ecole Classique	2	6	3	4	4	2	100.0%	0	0.0%
Edna Karr Magnet					13	13	0.0%	13	0.0%
Fisher Middle	1	17	3	4	4	3	300.0%	0	0.0%
Fontainebleau	9	18	9	14	14	5	55.6%	0	0.0%
Fredrick A Douglass Senior	14	4	3	3	8	-6	-42.9%	5	166.7%
F.T. Nicholls	13	0	3	4	5	-8	-61.5%	1	0.0%
George W. Carver Sr	20	1	9	4	10	-10	-50.0%	6	150.0%
Grace King	27	35	29	24	30	3	11.1%	6	25.0%
Hahnville	16	19	6	16	10	-6	-37.5%	-6	-37.5%
Hammond High	5	6	5	7	8	3	60.0%	1	14.3%
Helen Cox	0	0	0	8	16	16	0.0%	8	0.0%
Heritage Academy	5	5	0	3	5	0	0.0%	2	66.7%
John Ehret	49	71	33	47	39	-10	-20.4%	-8	-17.0%
John F Kennedy Senior	38	8	13	11	10	-28	-73.7%	-1	-9.1%
John Mc Donogh Senior	39	6	12	19	33	-6	-15.4%	14	73.7%
JS Clark Senior	23	7	3	6	12	-11	-47.8%	6	100.0%
Kentwood High	2	2	1	0	8	6	300.0%	8	0.0%
LB Landry	13	10	5	6	4	-9	-69.2%	-2	-33.3%
LE Rabouin Voc	21	11	13	9	20	-1	-4.8%	11	122.2%
LW Higgins	34	59	36	22	36	2	5.9%	14	63.6%
Mandeville	7	7	13	9	9	2	28.6%	0	0.0%
Marion Abramson	30	15	15	12	14	-16	-53.3%	2	16.7%
Mc Donogh 35 Senior	15	13	16	8	9	-6	-40.0%	1	12.5%
Mc Main Magnet	3	7	6	10	8	5	166.7%	-2	-20.0%
Northshore	11	28	9	13	8	-3	-27.3%	-5	-38.5%
O Pery Walker Senior	25	36	10	12	23	-2	-8.0%	11	91.7%
Pearl River	3	7	3	5	7	4	133.3%	2	40.0%
Ponchatoula High	4	6	5	5	5	1	25.0%	0	0.0%
Riverdale	14	17	17	17	24	10	71.4%	7	41.2%
Salmen	8	19	9	5	12	4	50.0%	7	140.0%
Sarah Reed	32	9	9	8	20	-12	-37.5%	12	150.0%
Slidell	17	40	17	26	17	0	0.0%	-9	-34.6%
St Augustine	12	5	4	7	6	-6	-50.0%	-1	-14.3%
Walter L Cohen	17	9	8	2	6	-11	-64.7%	4	200.0%
Warren Easton Fundamental	23	14	11	16	21	-2	-8.7%	5	31.3%
West Jefferson	48	64	42	35	37	-11	-22.9%	2	5.7%
West St John	1	1	1	1	4	3	300.0%	3	300.0%
Unknown	130	71	63	49	63	-67	-51.5%	14	28.6%
G.E.D.	260	200	160	182	242	-18	-6.9%	60	33.0%
Non-High School Grads	13	1	93	81	87	74	569.2%	6	7.4%
Other	284	427	229	277	327	43	15.1%	50	18.1%
<b>TOTAL First Time Freshman</b>	<b>1,437</b>	<b>1,541</b>	<b>1,054</b>	<b>1,101</b>	<b>1,401</b>	<b>-36</b>	<b>-2.5%</b>	<b>300</b>	<b>27.2%</b>

### Spring Enrollment History 2005-2009 by Zip Code (zip code order)

College Wide							Number Change	% Change	Number Change	% Change
	Zip Code	2005	2006	2007	2008	2009	2005 to 2009	2005 to 2009	2008 to 2009	2008 to 2009
Metairie S of I-10	70001	546	357	466	472	525	-21	-3.8%	53	11.2%
Metairie	70002	257	141	167	205	243	-14	-5.4%	38	18.5%
West Metairie	70003	559	355	443	506	583	24	4.3%	77	15.2%
Old Metairie-Bucktown	70005	229	180	213	229	265	36	15.7%	36	15.7%
Metairie Clearview N of I-10	70006	197	124	145	174	203	6	3.0%	29	16.7%
Belle Chasse	70037	191	147	171	164	172	-19	-9.9%	8	4.9%
Chalmette	70043	143	45	49	65	83	-60	-42.0%	18	27.7%
Destrehan	70047	149	103	128	124	139	-10	-6.7%	15	12.1%
Gretna	70053	213	171	182	177	176	-37	-17.4%	-1	-0.6%
Gretna/S of Whitney	70056	648	446	529	565	640	-8	-1.2%	75	13.3%
Harvey	70058	725	555	575	658	670	-55	-7.6%	12	1.8%
South Kenner	70062	235	180	190	219	217	-18	-7.7%	-2	-0.9%
North Kenner	70065	714	559	646	700	807	93	13.0%	107	15.3%
LaPlace	70068	282	204	252	282	266	-16	-5.7%	-16	-5.7%
Marrero	70072	833	739	766	814	879	46	5.5%	65	8.0%
Westwego	70094	420	348	390	431	498	78	18.6%	67	15.5%
Algiers	70114	448	290	332	327	319	-129	-28.8%	-8	-2.4%
Uptown	70115	324	137	220	222	262	-62	-19.1%	40	18.0%
French Quarter-Marigny	70116	155	57	100	94	103	-52	-33.5%	9	9.6%
Bywater/ Lower 9th Ward	70117	649	120	143	180	235	-414	-63.8%	55	30.6%
Carrollton/Riverbend	70118	403	140	185	255	261	-142	-35.2%	6	2.4%
Mid City	70119	646	167	228	295	393	-253	-39.2%	98	33.2%
N.O. Postal Box Zone	70121	150	120	136	133	143	-7	-4.7%	10	7.5%
Lakefront/Gentilly	70122	627	109	169	258	335	-292	-46.6%	77	29.8%
Harahan-Jefferson	70123	282	222	247	277	292	10	3.5%	15	5.4%
Lakefront/Lakeview	70124	211	57	60	104	168	-43	-20.4%	64	61.5%
Broadmoor	70125	233	41	81	115	136	-97	-41.6%	21	18.3%
N.O. East Crowder	70126	627	67	86	155	270	-357	-56.9%	115	74.2%
N.O. East Crowder to Wright Rd	70127	462	85	126	198	245	-217	-47.0%	47	23.7%
N.O. East Wright Rd to I-510	70128	359	64	106	195	257	-102	-28.4%	62	31.8%
N.O. East Past I-510	70129	265	63	104	157	173	-92	-34.7%	16	10.2%
N.O. CBD Lower Garden District	70130	131	72	100	92	104	-27	-20.6%	12	13.0%
Lower Coast Algiers	70131	445	333	383	386	424	-21	-4.7%	38	9.8%
Slidell	70458	417	262	337	384	410	-7	-1.7%	26	6.8%
Slidell	70460	298	193	225	283	302	4	1.3%	19	6.7%
Slidell	70461	336	207	306	341	361	25	7.4%	20	5.9%
Subtotal		13,809	7,460	8,986	10,236	11,559	-2,250	-16.3%	1,323	12.9%
Other Louisiana		2,899	2,311	2,613	2,856	3,027	128	4.4%	171	6.0%
Total Louisiana		16,708	9,771	11,599	13,092	14,586	-2,122	-12.7%	1,494	11.4%
Out-of-State/Unknown		79	231	181	87	92	13	16.5%	5	5.7%
<b>Total</b>		<b>16,787</b>	<b>10,002</b>	<b>11,780</b>	<b>13,179</b>	<b>14,678</b>	<b>-2,109</b>	<b>-12.6%</b>	<b>1,499</b>	<b>11.4%</b>

### Spring Enrollment History 2005-2009 by Zip Code (zip code order)

City Park	Zip Code						Number Change	% Change	Number Change	% Change
		2005	2006	2007	2008	2009	2005 to 2009	2005 to 2009	2008 to 2009	2008 to 2009
Metairie S of I-10	70001	491	314	410	416	463	-28	-5.7%	47	11.3%
Metairie	70002	231	129	154	188	223	-8	-3.5%	35	18.6%
West Metairie	70003	500	321	395	462	530	30	6.0%	68	14.7%
Old Metairie-Bucktown	70005	204	158	182	205	231	27	13.2%	26	12.7%
Metairie Clearview N of I-10	70006	186	117	132	156	182	-4	-2.2%	26	16.7%
Belle Chasse	70037	53	40	45	38	37	-16	-30.2%	-1	-2.6%
Chalmette	70043	104	33	34	52	61	-43	-41.3%	9	17.3%
Destrehan	70047	141	86	110	108	118	-23	-16.3%	10	9.3%
Gretna	70053	57	54	53	74	69	12	21.1%	-5	-6.8%
Gretna/S of Whitney	70056	219	144	181	214	237	18	8.2%	23	10.7%
Harvey	70058	219	173	183	255	230	11	5.0%	-25	-9.8%
South Kenner	70062	221	168	170	198	192	-29	-13.1%	-6	-3.0%
North Kenner	70065	653	496	584	637	726	73	11.2%	89	14.0%
LaPlace	70068	266	204	226	254	229	-37	-13.9%	-25	-9.8%
Marrero	70072	255	233	193	247	268	13	5.1%	21	8.5%
Westwego	70094	164	131	135	187	171	7	4.3%	-16	-8.6%
Algiers	70114	128	86	110	110	100	-28	-21.9%	-10	-9.1%
Uptown	70115	296	116	197	194	224	-72	-24.3%	30	15.5%
French Quarter-Marigny	70116	144	50	87	87	91	-53	-36.8%	4	4.6%
Bywater/ Lower 9th Ward	70117	608	107	127	162	217	-391	-64.3%	55	34.0%
Carrollton/Riverbend	70118	383	121	173	235	237	-146	-38.1%	2	0.9%
Mid City	70119	618	151	202	275	359	-259	-41.9%	84	30.5%
N.O. Postal Box Zone	70121	128	105	117	121	130	2	1.6%	9	7.4%
Lakefront/Gentilly	70122	585	89	154	240	308	-277	-47.4%	68	28.3%
Harahan-Jefferson	70123	251	188	210	236	249	-2	-0.8%	13	5.5%
Lakefront/Lakeview	70124	191	51	53	91	155	-36	-18.8%	64	70.3%
Broadmoor	70125	222	35	70	108	123	-99	-44.6%	15	13.9%
N.O. East Crowder	70126	591	57	72	140	248	-343	-58.0%	108	77.1%
N.O. East Crowder to Wright Rd	70127	435	70	104	180	220	-215	-49.4%	40	22.2%
N.O. East Wright Rd to I-510	70128	330	54	95	184	237	-93	-28.2%	53	28.8%
N.O. East Past I-510	70129	242	54	92	144	152	-90	-37.2%	8	5.6%
N.O. CBD Lower Garden District	70130	116	62	87	80	167	51	44.0%	87	108.8%
Lower Coast Algiers	70131	163	109	106	124	167	4	2.5%	43	34.7%
Slidell	70458	104	82	110	145	109	5	4.8%	-36	-24.8%
Slidell	70460	78	66	66	85	72	-6	-7.7%	-13	-15.3%
Slidell	70461	83	72	103	122	118	35	42.2%	-4	-3.3%
Subtotal		9,660	4,526	5,522	6,754	7,650	-2,010	-20.8%	896	13.3%
Other Louisiana		1,720	1,241	1,424	1,522	1,346	-374	-21.7%	-176	-11.6%
Total Louisiana		11,380	5,767	6,946	8,276	8,996	-2,384	-20.9%	720	8.7%
Out-of-State/Unknown		61	160	118	65	61	0	0.0%	-4	-6.2%
<b>Total</b>		<b>11,441</b>	<b>5,927</b>	<b>7,064</b>	<b>8,341</b>	<b>9,057</b>	<b>-2,384</b>	<b>-20.8%</b>	<b>716</b>	<b>8.6%</b>

### Spring Enrollment History 2005-2009 by Zip Code (zip code order)

West Bank							Number Change	% Change	Number Change	% Change
	Zip Code	2005	2006	2007	2008	2009	2005 to 2009	2005 to 2009	2008 to 2009	2008 to 2009
Metairie S of I-10	70001	13	18	19	17	27	14	107.7%	10	58.8%
Metairie	70002	7	5	8	11	11	4	0.0%	0	0.0%
West Metairie	70003	11	10	23	13	14	3	27.3%	1	7.7%
Old Metairie-Bucktown	70005	13	8	15	6	12	-1	0.0%	6	100.0%
Metairie Clearview N of I-10	70006	2	3	5	5	7	5	250.0%	2	40.0%
Belle Chasse	70037	130	96	114	116	121	-9	-6.9%	5	4.3%
Chalmette	70043	7	1	2	3	6	-1	-14.3%	3	100.0%
Destrehan	70047	2	8	8	7	8	6	300.0%	1	14.3%
Gretna	70053	144	106	122	96	100	-44	-30.6%	4	4.2%
Gretna/S of Whitney	70056	400	271	319	318	370	-30	-7.5%	52	16.4%
Harvey	70058	462	344	357	365	407	-55	-11.9%	42	11.5%
South Kenner	70062	10	5	12	6	13	3	0.0%	7	116.7%
North Kenner	70065	12	15	15	19	36	24	200.0%	17	89.5%
Jean Lafitte	70067	41	22	20	25	23	-18	-43.9%	-2	-8.0%
LaPlace	70068	7	7	7	4	18	11	157.1%	14	350.0%
Marrero	70072	535	475	524	512	554	19	3.6%	42	8.2%
Plaquemines	70083	28	16	14	28	27	-1	-3.6%	-1	-3.6%
Westwego	70094	238	199	230	218	298	60	25.2%	80	36.7%
Algiers	70114	303	195	212	207	206	-97	-32.0%	-1	-0.5%
Uptown	70115	10	13	15	20	25	15	150.0%	5	25.0%
French Quarter-Marigny	70116	6	2	6	3	7	1	16.7%	4	133.3%
Bywater/ Lower 9th Ward	70117	21	7	12	11	12	-9	-42.9%	1	9.1%
Carrollton/Riverbend	70118	12	14	6	11	17	5	41.7%	6	54.5%
Mid City	70119	9	6	11	10	17	8	88.9%	7	70.0%
N.O. Postal Box Zone	70121	6	9	10	5	7	1	16.7%	2	40.0%
Lakefront/Gentilly	70122	17	10	6	7	13	-4	-23.5%	6	85.7%
Harahan-Jefferson	70123	12	11	11	16	17	5	41.7%	1	6.3%
Lakefront/Lakeview	70124	2	1	3	4	3	1	0.0%	-1	-25.0%
Broadmoor	70125	6	6	6	3	6	0	0.0%	3	100.0%
N.O. East Crowder	70126	17	5	7	9	16	-1	-5.9%	7	77.8%
N.O. East Crowder to Wright Rd	70127	9	8	13	9	18	9	100.0%	9	100.0%
N.O. East Wright Rd to I-510	70128	12	4	2	3	10	-2	-16.7%	7	233.3%
N.O. East Past I-510	70129	13	7	6	10	10	-3	-23.1%	0	0.0%
N.O. CBD Lower Garden District	70130	7	8	11	6	13	6	85.7%	7	116.7%
Lower Coast Algiers	70131	263	209	255	244	236	-27	-10.3%	-8	-3.3%
Slidell	70458	1	2	8	5	7	6	600.0%	2	40.0%
Slidell	70460	2	4	4	4	4	2	0.0%	0	0.0%
Slidell	70461	1	2	7	6	6	5	0.0%	0	0.0%
Subtotal		2,791	2,132	2,425	2,362	2,702	-89	-3.2%	340	14.4%
Other Louisiana		216	204	205	203	252	36	16.7%	49	24.1%
Total Louisiana		3,007	2,336	2,630	2,565	2,954	-53	-1.8%	389	15.2%
Out-of-State/Unknown		4	33	26	12	20	16	0.0%	8	66.7%
<b>Total</b>		<b>3,011</b>	<b>2,369</b>	<b>2,656</b>	<b>2,577</b>	<b>2,974</b>	<b>-37</b>	<b>-1.2%</b>	<b>397</b>	<b>15.4%</b>



### Spring Enrollment History 2005-2009 by Zip Code (zip code order)

Charity School of Nursing							Number Change	% Change	Number Change	% Change
	Zip Code	2005	2006	2007	2008	2009	2005 to 2009	2005 to 2009	2008 to 2009	2008 to 2009
Metairie S of I-10	70001	42	23	35	35	28	-14	-33.3%	-7	-20.0%
Metairie	70002	17	7	5	5	8	-9	-52.9%	3	60.0%
West Metairie	70003	46	23	24	30	36	-10	-21.7%	6	20.0%
Old Metairie-Bucktown	70005	12	13	16	17	20	8	66.7%	3	17.6%
Metairie Clearview N of I-10	70006	9	4	7	13	13	4	44.4%	0	0.0%
Belle Chasse	70037	8	11	12	10	12	4	50.0%	2	20.0%
Chalmette	70043	32	9	13	9	11	-21	-65.6%	2	22.2%
Destrehan	70047	6	9	10	9	13	7	116.7%	4	44.4%
Gretna	70053	12	11	6	7	7	-5	-41.7%	0	0.0%
Gretna/S of Whitney	70056	28	29	28	33	32	4	14.3%	-1	-3.0%
Harvey	70058	42	36	35	37	29	-13	-31.0%	-8	-21.6%
South Kenner	70062	4	7	8	15	11	7	175.0%	-4	-26.7%
North Kenner	70065	47	47	47	43	44	-3	-6.4%	1	2.3%
LaPlace	70068	8	9	18	22	17	9	112.5%	-5	-22.7%
Marrero	70072	41	30	48	54	52	11	26.8%	-2	-3.7%
Westwego	70094	18	18	25	26	29	11	61.1%	3	11.5%
Algiers	70114	17	8	10	10	13	-4	-23.5%	3	30.0%
Uptown	70115	18	8	6	8	10	-8	-44.4%	2	25.0%
French Quarter-Marigny	70116	5	5	7	4	4	-1	-20.0%	0	0.0%
Bywater/ Lower 9th Ward	70117	19	5	4	6	5	-14	-73.7%	-1	-16.7%
Carrollton/Riverbend	70118	8	5	6	8	6	-2	-25.0%	-2	-25.0%
Mid City	70119	19	9	15	10	17	-2	-10.5%	7	70.0%
N.O. Postal Box Zone	70121	15	6	9	7	6	-9	-60.0%	-1	-14.3%
Lakefront/Gentilly	70122	23	9	9	10	12	-11	-47.8%	2	20.0%
Harahan-Jefferson	70123	18	23	26	25	24	6	33.3%	-1	-4.0%
Lakefront/Lakeview	70124	18	4	4	9	10	-8	-44.4%	1	11.1%
Broadmoor	70125	5	0	5	4	5	0	0.0%	1	0.0%
N.O. East Crowder	70126	18	4	7	5	3	-15	-83.3%	-2	-40.0%
N.O. East Crowder to Wright Rd	70127	17	6	9	8	7	-10	-58.8%	-1	-12.5%
N.O. East Wright Rd to I-510	70128	17	4	8	7	7	-10	-58.8%	0	0.0%
N.O. East Past I-510	70129	6	2	3	2	9	3	50.0%	7	350.0%
N.O. CBD Lower Garden District	70130	7	2	1	4	6	-1	-14.3%	2	50.0%
Lower Coast Algiers	70131	18	13	22	18	21	3	16.7%	3	16.7%
Slidell	70458	1	21	27	22	31	30	3000.0%	9	40.9%
Slidell	70460	2	21	21	27	20	18	900.0%	-7	-25.9%
Slidell	70461	1	16	25	15	22	21	2100.0%	7	46.7%
Subtotal		624	457	561	574	600	-24	-3.8%	26	4.5%
Other Louisiana		238	179	207	179	168	-70	-29.4%	-11	-6.1%
Total Louisiana		862	636	768	753	768	-94	-10.9%	15	2.0%
Out-of-State/Unknown		8	22	20	3	2	-6	-75.0%	-1	-33.3%
<b>Total</b>		<b>870</b>	<b>658</b>	<b>788</b>	<b>756</b>	<b>770</b>	<b>-100</b>	<b>-11.5%</b>	<b>14</b>	<b>1.9%</b>

### Spring Enrollment History 2005-2009 by Zip Code (zip code order)

Slidell/Northshore							Number Change	% Change	Number Change	% Change
	Zip Code	2005	2006	2007	2008	2009	2005 to 2009	2005 to 2009	2008 to 2009	2008 to 2009
Metairie S of I-10	70001	0	2	2	4	7	7	0.0%	3	75.0%
Metairie	70002	2	0	0	1	1	-1	0.0%	0	0.0%
West Metairie	70003	2	1	1	1	3	1	50.0%	2	200.0%
Old Metairie-Bucktown	70005	0	1	0	1	2	2	0.0%	1	0.0%
Metairie Clearview N of I-10	70006	0	0	1	0	1	1	0.0%	1	0.0%
Belle Chasse	70037	0	0	0	0	2	2	0.0%	2	0.0%
Chalmette	70043	0	2	0	1	5	5	0.0%	4	0.0%
Destrehan	70047	0	0	0	0	0	0	0.0%	0	0.0%
Gretna	70053	0	0	1	0	0	0	0.0%	0	0.0%
Gretna/S of Whitney	70056	0	2	1	0	1	1	0.0%	1	0.0%
Harvey	70058	0	2	0	1	4	4	0.0%	3	0.0%
South Kenner	70062	0	0	0	0	1	1	0.0%	1	0.0%
North Kenner	70065	2	1	0	1	1	-1	-50.0%	0	0.0%
LaPlace	70068	1	0	1	2	2	1	100.0%	0	0.0%
Marrero	70072	2	1	1	1	5	3	150.0%	4	400.0%
Westwego	70094	0	0	0	0	0	0	0.0%	0	0.0%
Algiers	70114	0	1	0	0	0	0	0.0%	0	0.0%
Uptown	70115	0	0	2	0	3	3	0.0%	3	0.0%
French Quarter-Marigny	70116	0	0	0	0	1	1	0.0%	1	0.0%
Bywater/ Lower 9th Ward	70117	1	1	0	1	1	0	0.0%	0	0.0%
Carrollton/Riverbend	70118	0	0	0	1	1	1	0.0%	0	0.0%
Mid City	70119	0	1	0	0	0	0	0.0%	0	0.0%
N.O. Postal Box Zone	70121	1	0	0	0	0	-1	0.0%	0	0.0%
Lakefront/Gentilly	70122	2	1	0	1	2	0	0.0%	1	0.0%
Harahan-Jefferson	70123	1	0	0	0	2	1	100.0%	2	0.0%
Lakefront/Lakeview	70124	0	1	0	0	0	0	0.0%	0	0.0%
Broadmoor	70125	0	0	0	0	2	2	0.0%	2	0.0%
N.O. East Crowder	70126	1	1	0	1	3	2	200.0%	2	0.0%
N.O. East Crowder to Wright Rd	70127	1	1	0	1	0	-1	-100.0%	-1	0.0%
N.O. East Wright Rd to I-510	70128	0	2	1	1	3	3	0.0%	2	0.0%
N.O. East Past I-510	70129	4	0	3	1	2	-2	-50.0%	1	0.0%
N.O. CBD Lower Garden District	70130	1	0	1	2	1	0	0.0%	-1	0.0%
Lower Coast Algiers	70131	1	2	0	0	0	-1	0.0%	0	0.0%
St. Tammany	70420	36	30	32	45	57	21	58.3%	12	26.7%
Washington	70427	27	34	35	33	44	17	63.0%	11	33.3%
Covington	70433	112	94	106	130	168	56	50.0%	38	29.2%
Covington	70435	48	40	47	81	89	41	85.4%	8	9.9%
St. Tammany	70445	57	33	55	64	75	18	31.6%	11	17.2%
St. Tammany	70448	56	62	70	88	109	53	94.6%	21	23.9%
St. Tammany	70452	72	46	59	87	75	3	4.2%	-12	-13.8%
Slidell	70458	282	157	192	212	263	-19	-6.7%	51	24.1%
Slidell	70460	199	102	134	167	206	7	3.5%	39	23.4%
Slidell	70461	230	117	171	198	215	-15	-6.5%	17	8.6%
St. Tammany	70471	70	53	70	60	90	20	28.6%	30	50.0%
Subtotal		1,211	791	986	1,187	1,447	236	19.5%	260	21.9%
Other Louisiana		211	248	241	269	421	210	99.5%	152	56.5%
Total Louisiana		1,422	1,039	1,227	1,456	1,868	446	31.4%	412	28.3%
Out-of-State/Unknown		11	6	16	17	9	-2	-18.2%	-8	-47.1%
<b>Total</b>		<b>1,433</b>	<b>1,045</b>	<b>1,243</b>	<b>1,473</b>	<b>1,877</b>	<b>832</b>	<b>79.6%</b>	<b>404</b>	<b>27.4%</b>