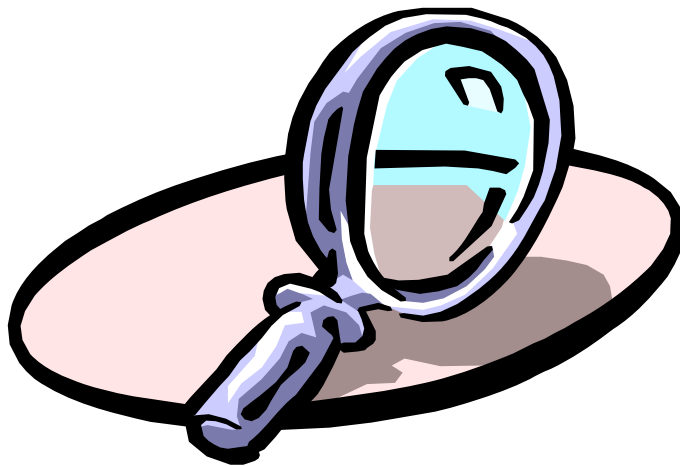


Delgado

COMMUNITY COLLEGE

Final Enrollment Report

Fall 2006



Published on May 1, 2007

By The Office of Institutional Research

Table of Contents	page no.
Summary	
Enrollment by Gender	1
Enrollment by Ethnicity	2
Enrollment by Age	4
Enrollment by Admission Status	6
Enrollment by Classification	8
Full-time/Part-time Status, Headcount, FTE, SCH	9
Enrollment by Award Sought	11
Enrollment by Division	12
Enrollment by Online Status	13
Enrollment by Program	14
Enrollment by Program Ranked by Student Total	20
Enrollment by Parish	21
Top 50 "Feeder" High Schools of First Time Freshmen	23
Enrollment by Zip Code	24

NOTE: Because Fall 2005 semester was cancelled due to Hurricane Katrina, we have substituted Spring 2006 in our comparison.

SUMMARY

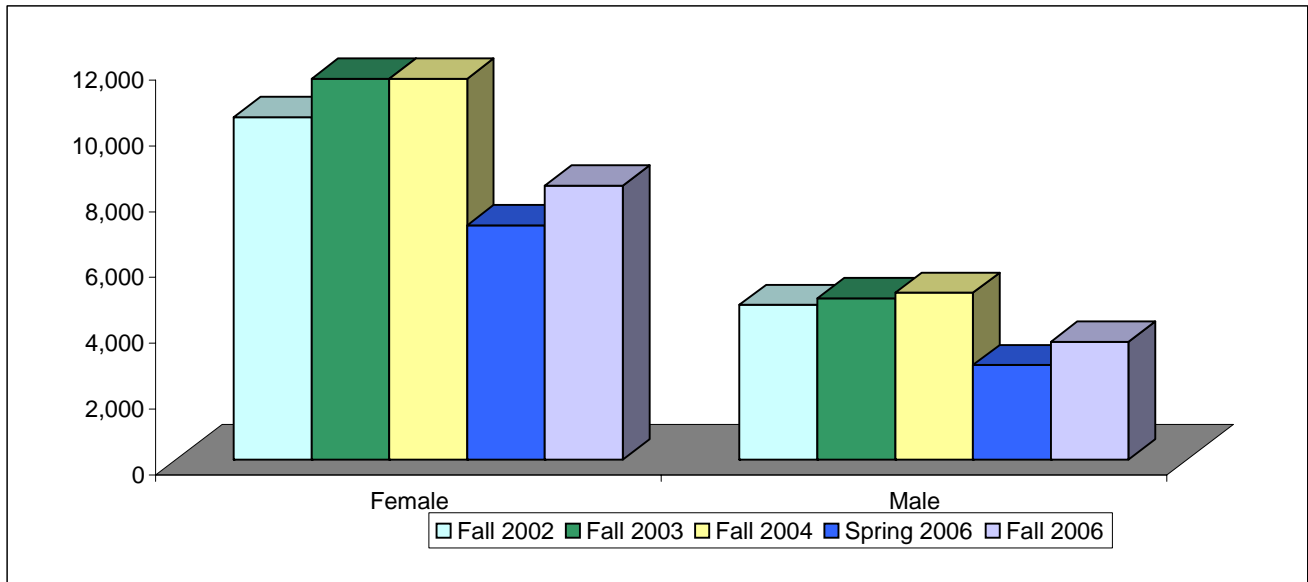
- ✓ Post-Katrina enrollment increased 19.1% from Spring 2006 (10,001) to Fall 2006 (11,916).
- ✓ Female students increased by 17.0% from Spring 2006; male students increased by 24.6%. Our female student enrollment continues to make up 70% of the total.
- ✓ African American enrollment increased by 25.1% from Spring 2006. Asian/Pacific Islander enrollment increased by 27%. Caucasian enrollment increased by 15.3%. African Americans now make up 36% of our enrollment, up from spring (34%), but still less than the pre-Katrina percentage of 42%.
- ✓ Charity Campus had the largest increase from Spring 2006 with 31.9% gain in enrollment. Northshore site increased by 27.7% over Spring 2006.
- ✓ Enrollment at the City Park campus increased 19.4%, and West Bank campus by 11.1%.
- ✓ Transfer students increases by 120.1% from Spring 2006; Readmitted students increased by 171.9%. First-time freshman increased 28.5% from Spring 2006.
- ✓ Pre-Nursing and General Studies had the largest increases in enrollment since Spring 2006.
- ✓ Business Administration, Health Information Technology, Practical Nursing, Electrical Construction Technology, CET-Construction Management, American Sign Language Studies, Veterinary Technology had significant increases in program enrollment from the Spring 2006 semester.
- ✓ Hospitality, and Safety & Health Technology had significant decreases in program enrollment from the Spring 2006.

Fall Enrollment History 2002-2006 by Gender

College Wide					
Gender	Fall 2002	Fall 2003	Fall 2004	Spring 2006	Fall 2006
Female	10,416	11,591	11,591	7,126	8,334
Male	4,705	4,909	5,078	2,875	3,582
Total	15,121	16,500	16,669	10,001	11,916
Percentages					
Female	68.9%	70.2%	69.5%	71.3%	69.9%
Male	31.1%	29.8%	30.5%	28.7%	30.1%

Number Change	% Change
2002 to 2006	2002 to 2006
-2,082	-20.0%
-1,123	-23.9%
-3,205	-21.2%

Number Change	% Change
SP2006 to FL2006	SP2006 to FL2006
1,208	17.0%
707	24.6%
1,915	19.1%



City Park Campus					
Gender	Fall 2002	Fall 2003	Fall 2004	Spring 2006	Fall 2006
Female	7,928	7,754	7,580	3,996	4,592
Male	3,979	3,801	3,806	1,930	2,486
Total	11,907	11,555	11,386	5,926	7,078
West Bank Campus					
Female	1,971	2,265	2,201	1,779	1,995
Male	662	721	744	590	637
Total	2,633	2,986	2,945	2,369	2,632
Charity School of Nursing					
Female	517	647	754	566	766
Male	64	75	106	92	102
Total	581	722	860	658	868
Northshore Site					
Female		925	1,056	785	981
Male		312	422	263	357
Total		1,237	1,478	1,048	1,338

Number Change	% Change
2002 to 2006	2002 to 2006
-3,336	-42.1%
-1,493	-37.5%
-4,829	-40.6%
24	1.2%
-25	-3.8%
-1	0.0%
249	48.2%
38	59.4%
287	49.4%
56	6.1%
45	14.4%
101	8.2%

Number Change	% Change
SP2006 to FL2006	SP2006 to FL2006
596	14.9%
556	28.8%
1,152	19.4%
216	12.1%
47	8.0%
263	11.1%
200	35.3%
10	10.9%
210	31.9%
196	25.0%
94	35.7%
290	27.7%

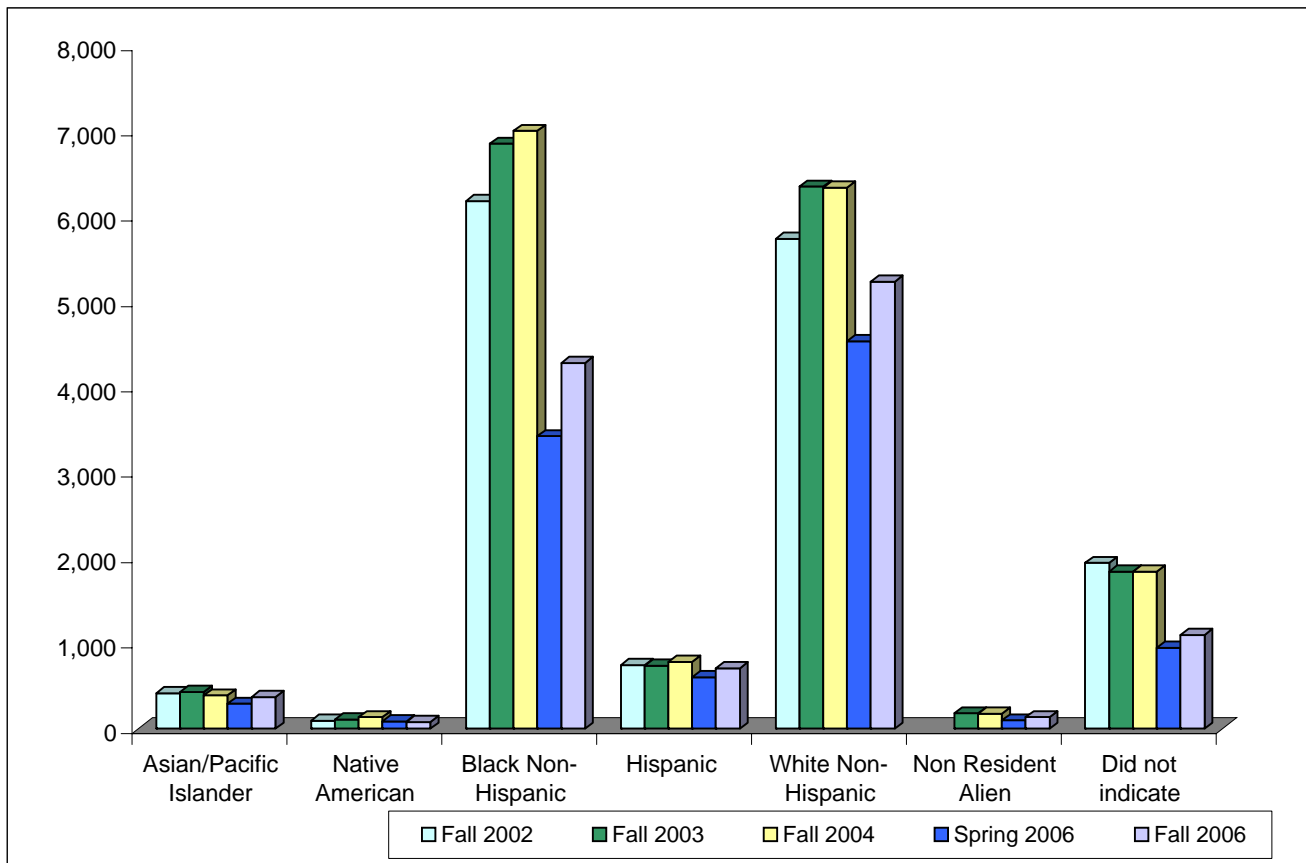
Fall Enrollment History 2002-2006 by Ethnicity

College Wide Ethnicity	Fall 2002	Fall 2003	Fall 2004	Spring 2006	Fall 2006
Asian/Pacific Islander	418	432	389	293	372
Native American	94	106	136	87	78
Black Non-Hispanic	6,183	6,853	7,004	3,427	4,286
Hispanic	746	737	785	605	707
White Non-Hispanic	5,739	6,351	6,339	4,542	5,239
Non Resident Alien		179	175	97	134
Did not indicate	1,941	1,842	1,841	950	1,100
Total	15,121	16,500	16,669	10,001	11,916

Number Change 2002 to 2006	% Change 2002 to 2006
-46	-11.0%
-16	-17.0%
-1,897	-30.7%
-39	-5.2%
-500	-8.7%
134	0.0%
-841	-43.3%
-3,205	-21.2%

Number Change SP2006 to FL2006	% Change SP2006 to FL2006
79	27.0%
-9	-10.3%
859	25.1%
102	16.9%
697	15.3%
37	38.1%
150	15.8%
1,915	19.1%

Percentages					
Asian/Pacific Islander	3%	3%	2%	3%	3.1%
Native American	1%	1%	1%	1%	0.7%
Black Non-Hispanic	41%	42%	42%	34%	36.0%
Hispanic	5%	4%	5%	6%	5.9%
White Non-Hispanic	38%	38%	38%	45%	44.0%
Non Resident Alien		1%	1%	1%	1.1%
Did not indicate	13%	11%	11%	9%	9.2%



Fall Enrollment History 2002-2006 Ethnicity by Campus

City Park Campus						Number Change	% Change	Number Change	% Change
	Fall 2002	Fall 2003	Fall 2004	Spring 2006	Fall 2006	2002 to 2006	2002 to 2006	SP2006 to FL2006	SP2006 to FL2006
Asian/Pacific Islander	345	344	293	181	225	-120	-34.8%	44	24.3%
Native American	48	50	74	45	41	-7	-14.6%	-4	-8.9%
Black Non-Hispanic	4,948	5,149	5,133	1,935	2484	-2,464	-49.8%	549	28.4%
Hispanic	627	556	568	413	496	-131	-20.9%	83	20.1%
White Non-Hispanic	4,497	4,222	3,965	2,660	3020	-1,477	-32.8%	360	13.5%
Non Resident Alien		172	167	94	126	126	0.0%	32	34.0%
Did not indicate	1,442	1,062	1,186	598	686	-756	-52.4%	88	14.7%
Total	11,907	11,555	11,386	5,926	7,078	-4,829	-40.6%	1,152	19.4%

West Bank Campus						Number Change	% Change	Number Change	% Change
	Fall 2002	Fall 2003	Fall 2004	Spring 2006	Fall 2006	2002 to 2006	2002 to 2006	SP2006 to FL2006	SP2006 to FL2006
Asian/Pacific Islander	63	69	75	95	130	67	106.3%	35	36.8%
Native American	42	36	38	28	21	-21	-50.0%	-7	-25.0%
Black Non-Hispanic	1,096	1,374	1,407	1,100	1265	169	15.4%	165	15.0%
Hispanic	103	122	142	126	125	22	21.4%	-1	-0.8%
White Non-Hispanic	881	945	934	797	857	-24	-2.7%	60	7.5%
Non Resident Alien		3	4	3	4	4	0.0%	1	33.3%
Did not indicate	448	437	345	220	230	-218	-48.7%	10	4.5%
Total	2,633	2,986	2,945	2,369	2,632	-1	0.0%	263	11.1%

Charity School of Nursing						Number Change	% Change	Number Change	% Change
	Fall 2002	Fall 2003	Fall 2004	Spring 2006	Fall 2006	2002 to 2006	2002 to 2006	SP2006 to FL2006	SP2006 to FL2006
Asian/Pacific Islander	10	14	15	12	9	-1	-10.0%	-3	-25.0%
Native American	4	9	8	6	6	2	50.0%	0	0.0%
Black Non-Hispanic	139	175	233	171	254	115	82.7%	83	48.5%
Hispanic	16	29	37	38	43	27	168.8%	5	13.2%
White Non-Hispanic	361	397	457	374	477	116	32.1%	103	27.5%
Non Resident Alien		3	4	0	2	2	0.0%	2	0.0%
Did not indicate	51	95	106	57	77	26	51.0%	20	35.1%
Total	581	722	860	658	868	287	49.4%	210	31.9%

Northshore Site						Number Change	% Change	Number Change	% Change
	Fall 2002	Fall 2003	Fall 2004	Spring 2006	Fall 2006	2002 to 2006	2002 to 2006	SP2006 to FL2006	SP2006 to FL2006
Asian/Pacific Islander		5	6	5	8	3	60.0%	3	60.0%
Native American		11	16	8	10	-1	-9.1%	2	25.0%
Black Non-Hispanic		155	231	221	283	128	82.6%	62	28.1%
Hispanic		30	38	28	43	13	43.3%	15	53.6%
White Non-Hispanic		787	983	711	885	98	12.5%	174	24.5%
Non Resident Alien		1	0	0	2	1	100.0%	2	0.0%
Did not indicate		248	204	75	107	-141	-56.9%	32	42.7%
Total		1,237	1,478	1,048	1,338	101	8.2%	290	27.7%

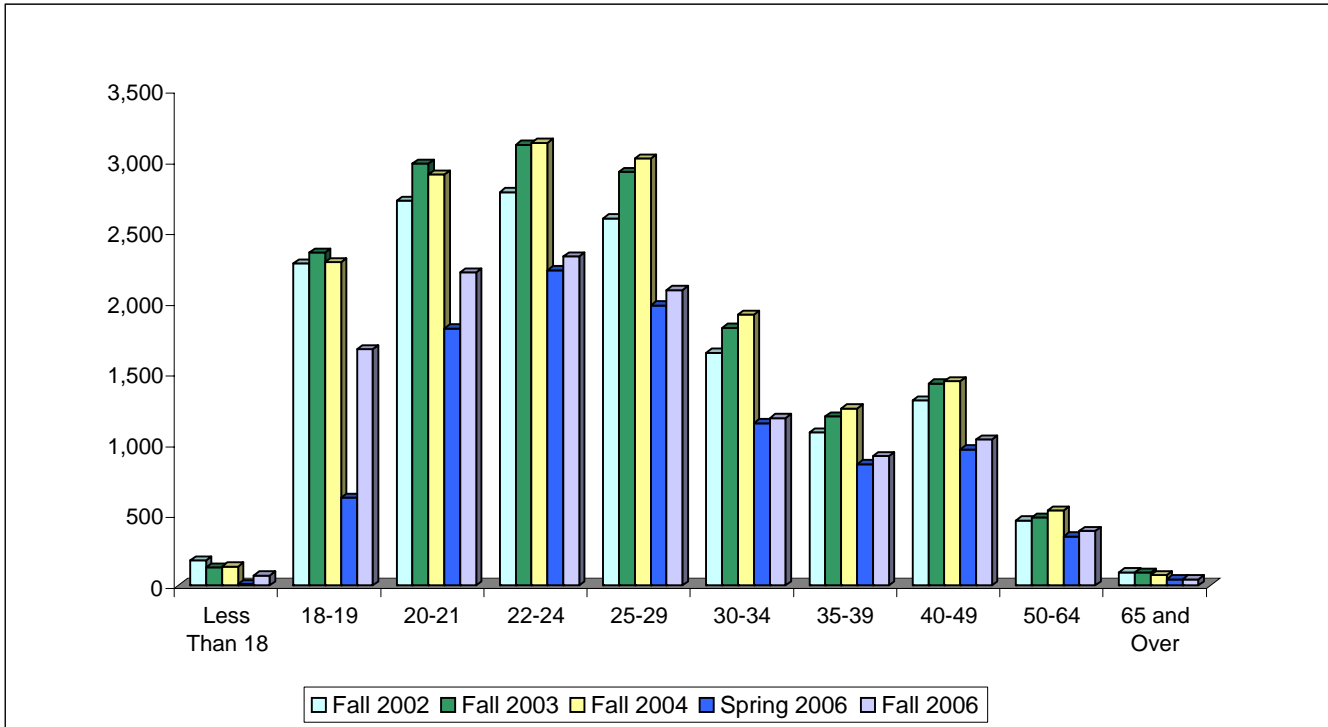
Fall Enrollment History 2002-2006 by Age

College Wide	Fall 2002	Fall 2003	Fall 2004	Spring 2006	Fall 2006
Less Than 18	175	126	134	10	70
18-19	2,274	2,351	2,283	619	1,668
20-21	2,719	2,980	2,903	1,816	2,212
22-24	2,778	3,113	3,127	2,228	2,325
25-29	2,593	2,920	3,015	1,978	2,087
30-34	1,644	1,820	1,912	1,146	1,183
35-39	1,080	1,193	1,250	857	913
40-49	1,307	1,427	1,442	960	1,032
50-64	459	479	530	345	384
65 and Over	92	91	73	42	42
Total	15,121	16,500	16,669	10,001	11,916
Average Age	28	28	28	29	27

Number Change	% Change
2002 to 2006	2002 to 2006
-105	-60.0%
-606	-26.6%
-507	-18.6%
-453	-16.3%
-506	-19.5%
-461	-28.0%
-167	-15.5%
-275	-21.0%
-75	-16.3%
-50	-54.3%
-3,205	-21.2%

Number Change	% Change
SP2006 to FL2006	SP2006 to FL2006
60	600.0%
1,049	169.5%
396	21.8%
97	4.4%
109	5.5%
37	3.2%
56	6.5%
72	7.5%
39	11.3%
0	0.0%
1,915	19.1%

Percentages					
Less Than 18	1%	1%	1%	0%	1%
18-19	15%	14%	14%	6%	14%
20-21	18%	18%	17%	18%	19%
22-24	18%	19%	19%	22%	20%
25-29	17%	18%	18%	20%	18%
30-34	11%	11%	11%	11%	10%
35-39	7%	7%	7%	9%	8%
40-49	9%	9%	9%	10%	9%
50-64	3%	3%	3%	3%	3%
65 and Over	1%	1%	0%	0%	0%



Fall Enrollment History 2002-2006 by Age by Campus

City Park Campus						Number Change	% Change	Number Change	% Change
	Fall 2002	Fall 2003	Fall 2004	Spring 2006	Fall 2006	2002 to 2006	2002 to 2006	SP2006 to FL2006	SP2006 to FL2006
Less Than 18	139	71	80	6	46	-93	-66.9%	40	666.7%
18-19	1,826	1,653	1,624	309	945	-881	-48.2%	636	205.8%
20-21	2,156	2,193	2,056	1,077	1,369	-787	-36.5%	292	27.1%
22-24	2,190	2,240	2,189	1,409	1,499	-691	-31.6%	90	6.4%
25-29	1,995	2,045	2,061	1,180	1,231	-764	-38.3%	51	4.3%
30-34	1,276	1,211	1,234	684	655	-621	-48.7%	-29	-4.2%
35-39	833	791	802	481	514	-319	-38.3%	33	6.9%
40-49	1,049	956	924	532	564	-485	-46.2%	32	6.0%
50-64	372	337	367	229	231	-141	-37.9%	2	0.9%
65 and Over	71	58	49	19	24	-47	-66.2%	5	26.3%
Total	11,907	11,555	11,386	5,926	7,078	-4,829	-40.6%	1,152	19.4%

West Bank Campus						Number Change	% Change	Number Change	% Change
	Fall 2002	Fall 2003	Fall 2004	Spring 2006	Fall 2006	2002 to 2006	2002 to 2006	SP2006 to FL2006	SP2006 to FL2006
Less Than 18	36	42	32	4	16	-20	-55.6%	12	300.0%
18-19	442	490	420	218	458	16	3.6%	240	110.1%
20-21	516	543	533	493	522	6	1.2%	29	5.9%
22-24	458	525	527	485	459	1	0.2%	-26	-5.4%
25-29	423	481	472	416	401	-22	-5.2%	-15	-3.6%
30-34	256	306	328	224	228	-28	-10.9%	4	1.8%
35-39	203	236	238	184	189	-14	-6.9%	5	2.7%
40-49	199	255	275	243	248	49	24.6%	5	2.1%
50-64	79	83	100	80	93	14	17.7%	13	16.3%
65 and Over	21	25	20	22	18	-3	-14.3%	-4	-18.2%
Total	2,633	2,986	2,945	2,369	2,632	-1	0.0%	263	11.1%

Charity School of Nursing						Number Change	% Change	Number Change	% Change
	Fall 2002	Fall 2003	Fall 2004	Spring 2006	Fall 2006	2002 to 2006	2002 to 2006	SP2006 to FL2006	SP2006 to FL2006
Less Than 18	0	0	0	0	0	0	0.0%	0	0.0%
18-19	6	4	3	0	1	-5	-83.3%	1	0.0%
20-21	47	47	50	7	36	-11	-23.4%	29	414.3%
22-24	130	154	175	115	154	24	18.5%	39	33.9%
25-29	175	216	239	193	247	72	41.1%	54	28.0%
30-34	112	143	181	138	168	56	50.0%	30	21.7%
35-39	44	72	103	106	132	88	200.0%	26	24.5%
40-49	59	67	88	83	110	51	86.4%	27	32.5%
50-64	8	19	21	16	20	12	150.0%	4	25.0%
65 and Over	0	0	0	0	0	0	0.0%	0	0.0%
Total	581	722	860	658	868	287	49.4%	210	31.9%

Northshore Site						Number Change	% Change	Number Change	% Change
	Fall 2002	Fall 2003	Fall 2004	Spring 2006	Fall 2006	2002 to 2006	2002 to 2006	SP2006 to FL2006	SP2006 to FL2006
Less Than 18		13	22	0	8	-5	-38.5%	8	0.0%
18-19		204	236	92	264	60	29.4%	172	187.0%
20-21		197	264	239	285	88	44.7%	46	19.2%
22-24		194	236	219	213	19	9.8%	-6	-2.7%
25-29		178	243	189	208	30	16.9%	19	10.1%
30-34		160	169	100	132	-28	-17.5%	32	32.0%
35-39		94	107	86	78	-16	-17.0%	-8	-9.3%
40-49		149	155	102	110	-39	-26.2%	8	7.8%
50-64		40	42	20	40	0	0.0%	20	100.0%
65 and Over		8	4	1	0	-8	-100.0%	-1	-100.0%
Total		1,237	1,478	1,048	1,338	101	8.2%	290	27.7%

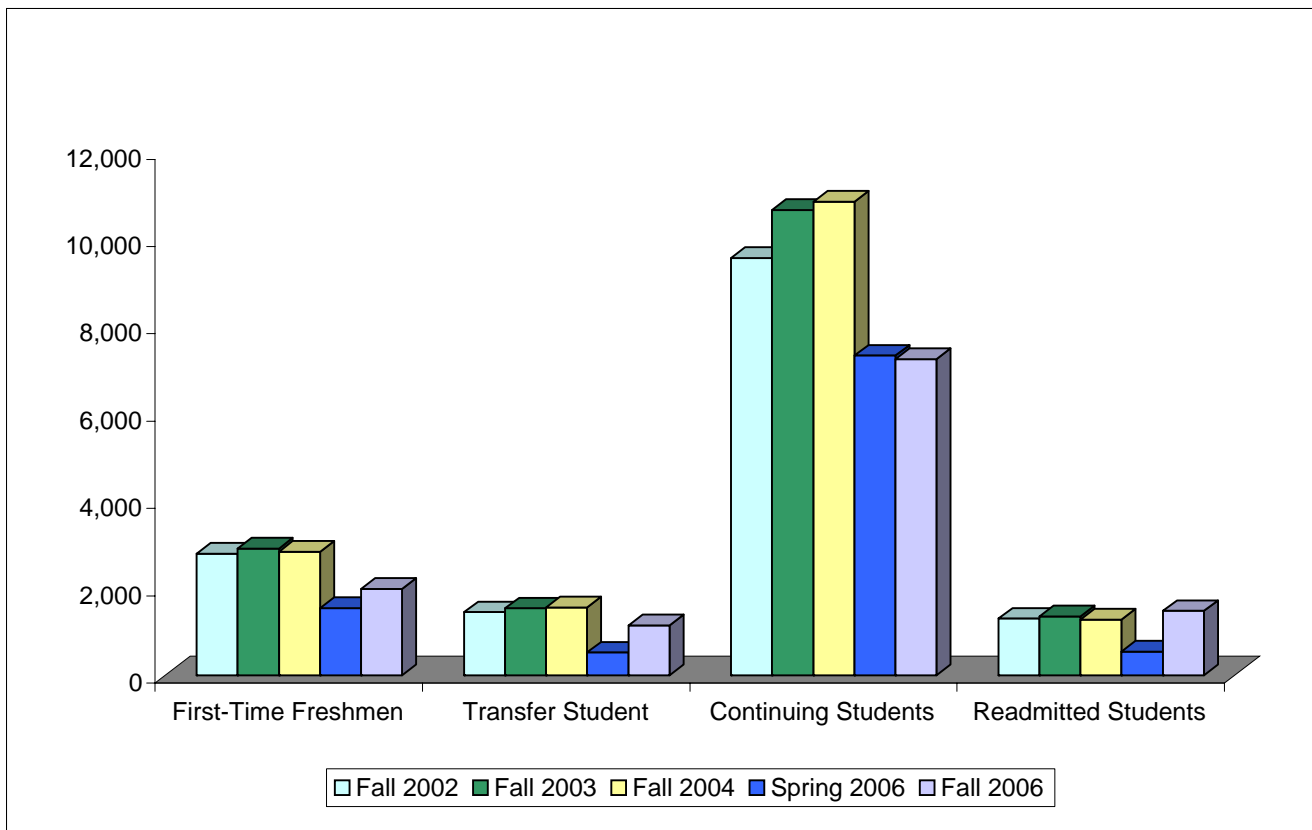
Fall Enrollment History 2002-2006 by Admission Status

College Wide					
	Fall 2002	Fall 2003	Fall 2004	Spring 2006	Fall 2006
First-Time Freshmen	2,784	2,902	2,823	1,536	1,973
Transfer Student	1,438	1,526	1,547	518	1,140
Continuing Students	9,556	10,653	10,842	7,321	7,235
Readmitted Students	1,296	1,346	1,274	540	1,468
Exchange Students	47	72	65	86	98
Other Students			118	0	2
Total	15,121	16,500	16,669	10,001	11,916

Number Change	% Change
2002 to 2006	2002 to 2006
-811	-29.1%
-298	-20.7%
-2,321	-24.3%
172	13.3%
51	108.5%
2	0.0%
-3,205	-21.2%

Number Change	% Change
SP2006 to FL2006	SP2006 to FL2006
437	28.5%
622	120.1%
-86	-1.2%
928	171.9%
12	14.0%
2	0.0%
1,915	19.1%

Percentages					
First-Time Freshmen	18%	18%	17%	15%	20%
Transfer Student	10%	9%	9%	5%	11%
Continuing Students	63%	65%	65%	73%	72%
Readmitted Students	9%	8%	8%	5%	15%
Exchange Students	0%	0%	0%	1%	1%
Other Students	0%	0%	1%	0%	0%



Fall Enrollment History 2002-2006 by Admission Status by Campus

City Park Campus						Number Change	% Change	Number Change	% Change
	Fall 2002	Fall 2003	Fall 2004	Spring 2006	Fall 2006	2002 to 2006	2002 to 2006	SP2006 to FL2006	SP2006 to FL2006
First-Time Freshmen	2,256	1,964	1,909	776	1,140	-1,116	-49.5%	364	46.9%
Transfer Student	1,216	1,142	1,122	302	745	-471	-38.7%	443	146.7%
Continuing Students	7,377	7,449	7,357	4,488	4,154	-3,223	-43.7%	-334	-7.4%
Readmitted Students	1,015	940	860	312	973	-42	-4.1%	661	211.9%
Exchange Students	43	60	56	48	66	23	53.5%	18	37.5%
Other Students		0	82	0	0	0	0.0%	0	0.0%
Total	11,907	11,555	11,386	5,926	7,078	-4,829	-40.6%	1,152	19.4%

West Bank Campus									
	Fall 2002	Fall 2003	Fall 2004	Spring 2006	Fall 2006				
First-Time Freshmen	526	568	517	482	479	-47	-8.9%	-3	-0.6%
Transfer Student	212	205	243	143	210	-2	-0.9%	67	46.9%
Continuing Students	1,653	1,931	1,909	1,535	1,598	-55	-3.3%	63	4.1%
Readmitted Students	238	271	249	174	321	83	34.9%	147	84.5%
Exchange Students	4	10	8	35	22	18	450.0%	-13	-37.1%
Other Students		1	19	0	2	2	0.0%	2	0.0%
Total	2,633	2,986	2,945	2,369	2,632	-1	0.0%	263	11.1%

Charity School of Nursing									
	Fall 2002	Fall 2003	Fall 2004	Spring 2006	Fall 2006				
First-Time Freshmen	2	11	8	0	1	-1	-50.0%	1	0.0%
Transfer Student	10	19	14	0	16	6	60.0%	16	0.0%
Continuing Students	526	646	784	641	808	282	53.6%	167	26.1%
Readmitted Students	43	46	54	16	43	0	0.0%	27	168.8%
Exchange Students	0	0	0	1	0	0	0.0%	-1	-100.0%
Other Students		0	0	0	0	0	0.0%	0	0.0%
Total	581	722	860	658	868	287	49.4%	210	31.9%

Northshore Site									
	Fall 2002	Fall 2003	Fall 2004	Spring 2006	Fall 2006				
First-Time Freshmen		359	389	278	353	-6	-1.7%	75	27.0%
Transfer Student		160	168	73	169	9	5.6%	96	131.5%
Continuing Students		627	792	657	675	48	7.7%	18	2.7%
Readmitted Students		89	111	38	131	42	47.2%	93	244.7%
Exchange Students		2	1	2	10	8	400.0%	8	400.0%
Other Students		0	17	0	0	0	0.0%	0	0.0%
Total		1,237	1,478	1,048	1,338	101	8.2%	290	27.7%

Fall Enrollment History 2002-2006 by Classification

College Wide						Number Change	% Change	Number Change	% Change
	Fall 2002	Fall 2003	Fall 2004	Spring 2006	Fall 2006	2002 to 2006	2002 to 2006	SP2006 to FL2006	SP2006 to FL2006
Freshmen	8,665	9,357	9,218	5,130	6,485	-2,180	-25.2%	1,355	26.4%
Sophomore	3,166	3,457	3,687	2,351	2,568	-598	-18.9%	217	9.2%
Other Undergraduates	3,140	3,604	3,640	2,455	2,790	-350	-11.1%	335	13.6%
Preparatory	150	82	124	65	73	-77	-51.3%	8	12.3%
Total	15,121	16,500	16,669	10,001	11,916	-3,205	-21.2%	1,915	19.1%

Percentages					
Freshmen	57%	57%	55%	51%	54%
Sophomore	21%	21%	22%	24%	22%
Other Undergraduates	21%	22%	22%	25%	23%
Preparatory	1%	0%	1%	1%	1%

Fall Enrollment History 2002-2006 Classification by Campus

City Park Campus						Number Change	% Change	Number Change	% Change
	Fall 2002	Fall 2003	Fall 2004	Spring 2006	Fall 2006	2002 to 2006	2002 to 2006	SP2006 to FL2006	SP2006 to FL2006
Freshmen	6,979	6,526	6,445	2,957	3,897	-3,082	-44.2%	940	31.8%
Sophomore	2,455	2,447	2,521	1,486	1,583	-872	-35.5%	97	6.5%
Other Undergraduates	2,324	2,508	2,334	1,443	1,549	-775	-33.3%	106	7.3%
Preparatory	149	74	86	40	49	-100	-67.1%	9	22.5%
Total	11,907	11,555	11,386	5,926	7,078	-4,829	-40.6%	1,152	19.4%

West Bank Campus						Number Change	% Change	Number Change	% Change
	Fall 2002	Fall 2003	Fall 2004	Spring 2006	Fall 2006	2002 to 2006	2002 to 2006	SP2006 to FL2006	SP2006 to FL2006
Freshmen	1,642	1,897	1,716	1,400	1,592	-50	-3.0%	192	13.7%
Sophomore	604	663	753	560	601	-3	-0.5%	41	7.3%
Other Undergraduates	387	426	457	387	425	38	9.8%	38	9.8%
Preparatory	0	0	19	22	14	14	0.0%	-8	-36.4%
Total	2,633	2,986	2,945	2,369	2,632	-1	0.0%	263	11.1%

Charity School of Nursing						Number Change	% Change	Number Change	% Change
	Fall 2002	Fall 2003	Fall 2004	Spring 2006	Fall 2006	2002 to 2006	2002 to 2006	SP2006 to FL2006	SP2006 to FL2006
Freshmen	44	32	15	2	12	-32	-72.7%	10	500.0%
Sophomore	107	112	133	114	143	36	33.6%	29	25.4%
Other Undergraduates	429	578	711	541	713	284	66.2%	172	31.8%
Preparatory	1	0	1	1	0	-1	-100.0%	-1	-100.0%
Total	581	722	860	658	868	287	49.4%	210	31.9%

Northshore Site						Number Change	% Change	Number Change	% Change
	Fall 2002	Fall 2003	Fall 2004	Spring 2006	Fall 2006	2002 to 2006	2002 to 2006	SP2006 to FL2006	SP2006 to FL2006
Freshmen		902	1,042	771	984	82	9.1%	213	27.6%
Sophomore		235	280	191	241	6	2.6%	50	26.2%
Other Undergraduates		92	138	84	103	11	12.0%	19	22.6%
Preparatory		8	18	2	10	2	25.0%	8	400.0%
Total		1,237	1,478	1,048	1,338	101	8.2%	290	27.7%

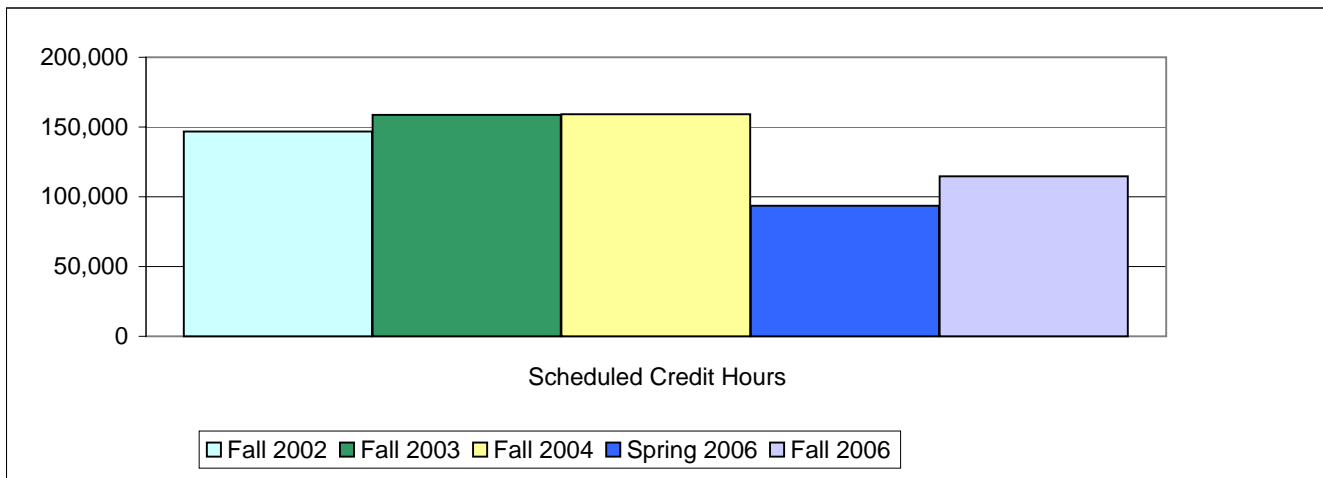
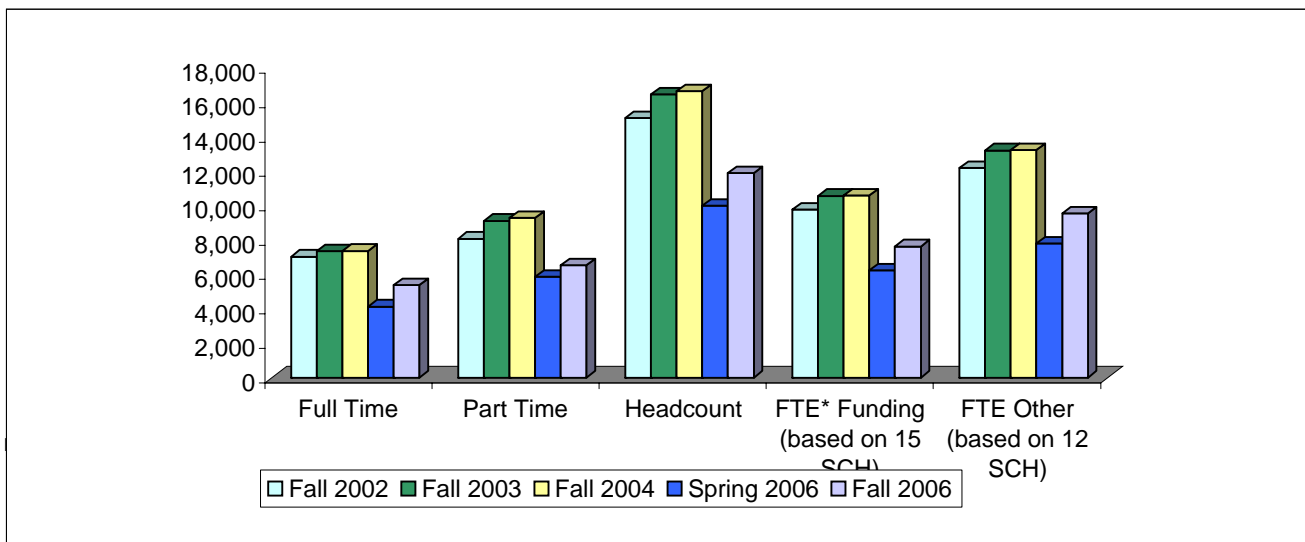
Fall Enrollment History 2002-2006 by Enrollment Status, Headcount, FTE, SCH

College Wide	Fall 2002	Fall 2003	Fall 2004	Spring 2006	Fall 2006
Full Time	7,039	7,369	7,380	4,134	5,378
Part Time	8,082	9,131	9,289	5,867	6,538
Headcount	15,121	16,500	16,669	10,001	11,916
SCH	146,570	158,745	158,987	93,580	114,617
FTE* Funding (based on 15 SCH)	9,771	10,583	10,599	6,239	7,641
FTE Other (based on 12 SCH)	12,214	13,229	13,249	7,798	9,551

Number Change to 2006	% Change to 2006
-1,661	-23.6%
-1,544	-19.1%
-3,205	-21.2%
-31,953	-21.8%
-2,130	-21.8%
-2,663	-21.8%

Number Change to SP2006	% Change to SP2006
1,244	30.1%
671	11.4%
1,915	19.1%
21,037	22.5%
1,402	22.5%
1,753	22.5%

Percentages					
Full Time	47%	45%	44%	41%	45%
Part Time	53%	55%	56%	59%	55%



**Fall Enrollment History 2002-2006
Enrollment Status, Headcount, FTE, SCH**

City Park Campus						Number Change	% Change	Number Change	% Change
	Fall 2002	Fall 2003	Fall 2004	Spring 2006	Fall 2006	2002 to 2006	2002 to 2006	SP2006 to FL2006	SP2006 to FL2006
Full Time	5,652	5,344	5,262	2,565	3,369	-2,283	-40.4%	804	31.3%
Part Time	6,255	6,211	6,124	3,361	3,709	-2,546	-40.7%	348	10.4%
Headcount	11,907	11,555	11,386	5,926	7,078	-4,829	-40.6%	1,152	19.4%
SCH	115,865	112,408	109,793	56,407	69,139	-46,726	-40.3%	12,732	22.6%
FTE* Funding (based on 15 SCH)	7,724	7,494	7,320	3,760	4,609	-3,115	-40.3%	849	22.6%
FTE Other (based on 12 SCH)	9,655	9,367	9,149	4,701	5,762	-3,894	-40.3%	1,061	22.6%

West Bank Campus									
Full Time	1,211	1,277	1,274	970	1,204	-7	-0.6%	234	24.1%
Part Time	1,422	1,709	1,671	1,399	1,428	6	0.4%	29	2.1%
Headcount	2,633	2,986	2,945	2,369	2,632	-1	0.0%	263	11.1%
SCH	24,755	27,728	27,284	21,326	24,348	-407	-1.6%	3,022	14.2%
FTE* Funding (based on 15 SCH)	1,650	1,849	1,819	1,422	1,623	-27	-1.6%	201	14.2%
FTE Other (based on 12 SCH)	2,063	2,311	2,274	1,777	2,029	-34	-1.6%	252	14.2%

Charity School of Nursing									
Full Time	176	233	279	200	272	96	54.5%	72	36.0%
Part Time	405	489	581	458	596	191	47.2%	138	30.1%
Headcount	581	722	860	658	868	287	49.4%	210	31.9%
SCH	5,950	7,468	8,939	6,587	9,128	3,178	53.4%	2,541	38.6%
FTE* Funding (based on 15 SCH)	397	498	596	439	609	212	53.3%	169	38.6%
FTE Other (based on 12 SCH)	496	622	745	549	761	265	53.4%	212	38.6%

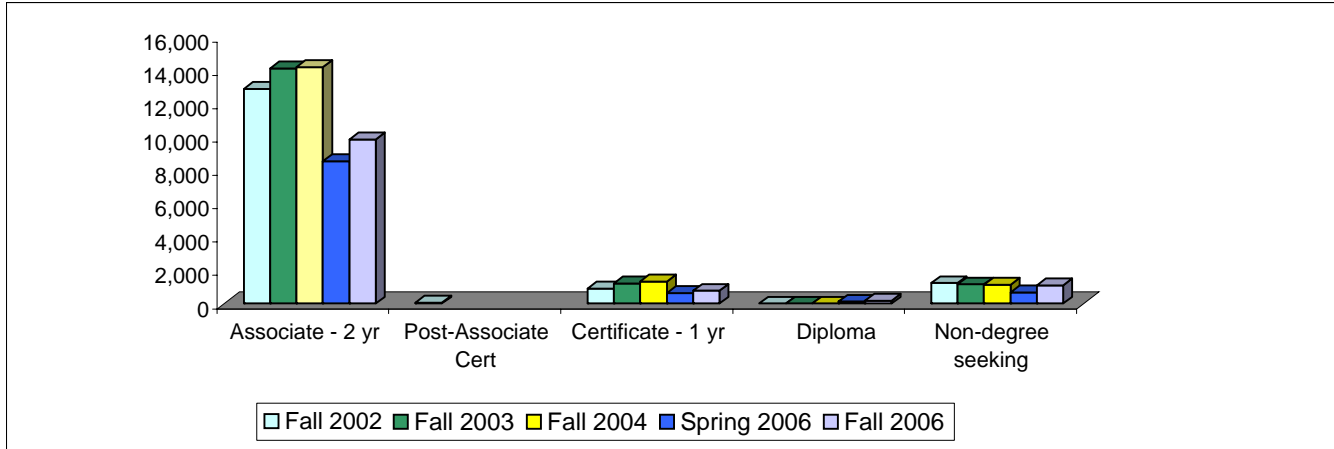
Northshore Site									
Full Time		515	565	399	533	18	3.5%	134	33.6%
Part Time		722	913	649	805	83	11.5%	156	24.0%
Headcount		1,237	1,478	1,048	1,338	101	8.2%	290	27.7%
SCH		11,141	12,971	9,260	12,002	861	7.7%	2,742	29.6%
FTE* Funding (based on 15 SCH)		743	865	617	800	57	7.7%	183	29.6%
FTE Other (based on 12 SCH)		928	1,081	772	1,000	72	7.7%	229	29.6%

Fall Enrollment History 2002-2006 by Award Sought

College Wide	Fall 2002	Fall 2003	Fall 2004	Spring 2006	Fall 2006
Associate - 2 yr	12,904	14,125	14,196	8,565	9,855
Post-Associate Cert	72				
Certificate - 1 yr	908	1,216	1,342	629	778
Diploma	0	0	0	117	176
Non-degree seeking	1,237	1,159	1,131	690	1,107
Total	15,121	16,500	16,669	10,001	11,916

Number Change 2002 to 2006	% Change 2002 to 2006
-3,049	-23.6%
-130	-14.3%
176	0.0%
-130	-10.5%
-3,205	-21.2%

Number Change to SP2006 to FL2006	% Change to SP2006 to FL2006
1,290	15.1%
149	0.0%
59	50.4%
417	60.4%
1,915	19.1%



City Park Campus	Fall 2002	Fall 2003	Fall 2004	Spring 2006	Fall 2006
Associate - 2 yr	10,000	9,742	9,484	4,956	5,741
Post-Associate Cert	68				
Certificate - 1 yr	760	877	970	435	533
Diploma	0	0	0	31	45
Non-degree seeking	1,079	936	932	504	759
Total	11,907	11,555	11,386	5,926	7,078

Number Change 2002 to 2006	% Change 2002 to 2006
-4,259	-42.6%
-227	-29.9%
45	0.0%
-320	-29.7%
-4,829	-40.6%

Number Change to SP2006 to FL2006	% Change to SP2006 to FL2006
785	15.8%
98	22.5%
14	45.2%
255	50.6%
1,152	19.4%

West Bank Campus	Fall 2002	Fall 2003	Fall 2004	Spring 2006	Fall 2006
Associate - 2 yr	2,403	2,655	2,605	2,033	2,214
Post-Associate Cert	4				
Certificate - 1 yr	109	191	201	141	174
Diploma	0	0	0	33	37
Non-degree seeking	117	140	139	162	207
Total	2,633	2,986	2,945	2,369	2,632

Number Change 2002 to 2006	% Change 2002 to 2006
-189	-7.9%
65	59.6%
37	0.0%
90	76.9%
-1	0.0%

Number Change to SP2006 to FL2006	% Change to SP2006 to FL2006
181	8.9%
33	23.4%
4	12.1%
45	27.8%
263	11.1%

Charity School of Nursing	Fall 2002	Fall 2003	Fall 2004	Spring 2006	Fall 2006
Associate - 2 yr	501	646	785	619	788
Post-Associate Cert	0				
Certificate - 1 yr	39	69	75	0	0
Diploma	0	0	0	39	80
Non-degree seeking	41	7	0	0	0
Total	581	722	860	658	868

Number Change 2002 to 2006	% Change 2002 to 2006
287	57.3%
-39	-100.0%
80	0.0%
-41	-100.0%
287	49.4%

Number Change to SP2006 to FL2006	% Change to SP2006 to FL2006
169	27.3%
0	0.0%
41	105.1%
0	0.0%
210	31.9%

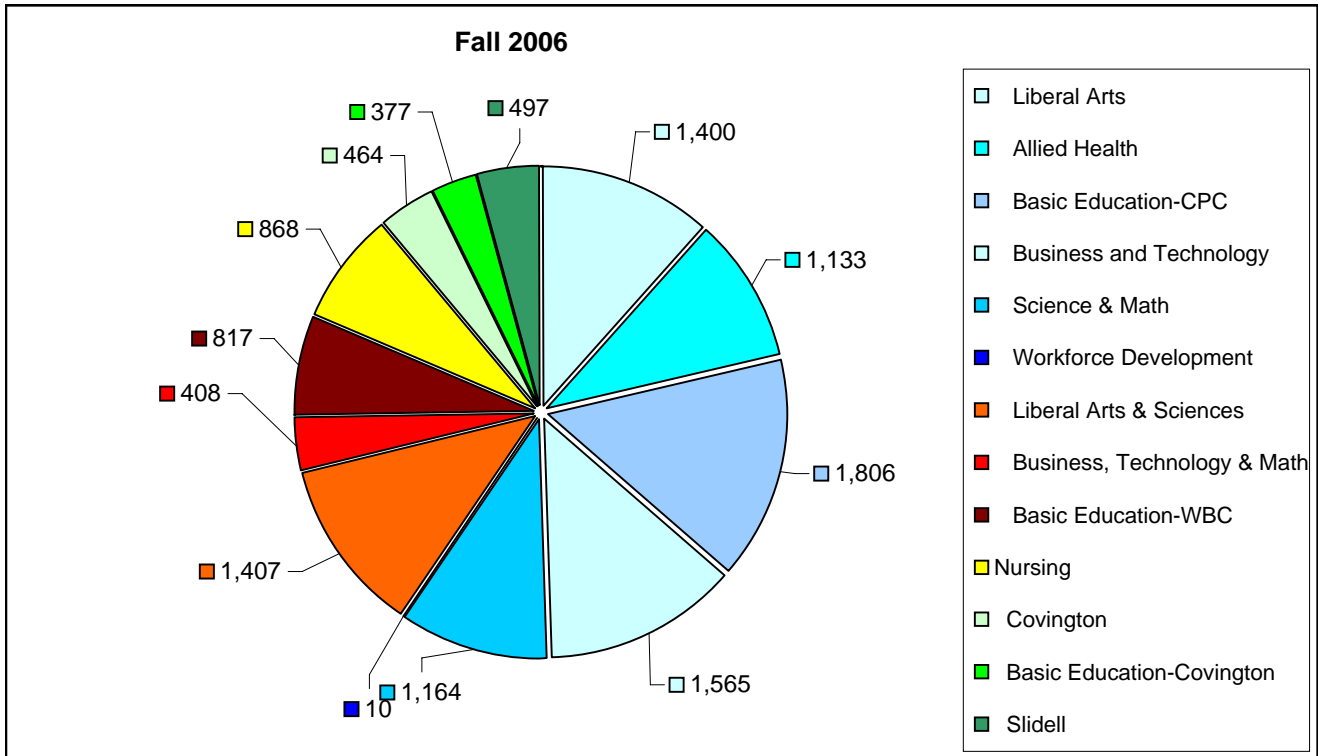
Northshore Site	Fall 2002	Fall 2003	Fall 2004	Spring 2006	Fall 2006
Associate - 2 yr		1,082	1,322	957	1,112
Post-Associate Cert					
Certificate - 1 yr		79	96	53	71
Diploma		0	0	14	14
Non-degree seeking		76	60	24	141
Total		1,237	1,478	1,048	1,338

Number Change 2002 to 2006	% Change 2002 to 2006
30	2.8%
-8	-10.1%
14	0.0%
65	85.5%
101	8.2%

Number Change to SP2006 to FL2006	% Change to SP2006 to FL2006
155	16.2%
18	34.0%
0	0.0%
117	487.5%
290	27.7%

Fall Enrollment History 2002-2006 by Division

	Fall 2002	Fall 2003	Fall 2004	Spring 2006	Fall 2006	Number Change 2002 to 2006	% Change 2002 to 2006	Number Change SP2006 to FL2006	% Change SP2006 to FL2006
City Park Campus									
Liberal Arts	2,568	2,771	2,526	1,316	1,400	-1,168	-45.5%	84	6.4%
Allied Health	1,667	2,073	1,904	1,067	1,133	-534	-32.0%	66	6.2%
Basic Education-CPC	2,664	1,796	2,436	1,098	1,806	-858	-32.2%	708	64.5%
Business and Technology	2,393	2,652	2,543	1,324	1,565	-828	-34.6%	241	18.2%
Science & Math	1,522	2,066	1,946	1,121	1,164	-358	-23.5%	43	3.8%
Workforce Development	1,093	197	31	0	10	-1,083	-99.1%	10	0.0%
Campus Total	11,907	11,555	11,386	5,926	7,078	-4,829	-40.6%	1,152	19.4%
West Bank Campus									
Liberal Arts & Sciences	1,399	1,948	1,723	1,271	1,407	8	0.6%	136	10.7%
Business, Technology & Math	511	582	456	399	408	-103	-20.2%	9	2.3%
Basic Education-WBC	723	456	766	699	817	94	13.0%	118	16.9%
Campus Total	2,633	2,986	2,945	2,369	2,632	-1	0.0%	263	11.1%
Nursing	581	722	860	658	868	287	49.4%	210	31.9%
Northshore Site									
Covington		283	333	311	464	181	64.0%	153	49.2%
Basic Education-Covington			390	360	377	N/A	N/A	17	4.7%
Slidell		954	755	377	497	-457	-47.9%	120	31.8%
Site Total		1,237	1,478	1,048	1,338	101	8.2%	290	27.7%
College Total	15,121	16,500	16,669	10,001	11,916	-3,205	-21.2%	1,915	19.1%



Fall Enrollment History 2002-2006 by Online Status

College Wide	Fall 2002	Fall 2003	Fall 2004	Spring 2006	Fall 2006	Number Change	% Change	Number Change	% Change
						2002 to 2006	2002 to 2006	SP2006 to FL2006	SP2006 to FL2006
No. of students taking a web class				2,471	2,781			310	12.5%
Students taking only web classes				879	758			-121	-13.8%
Average no. of web courses taken								0	0.0%
Students in only F2F classes				7,530	9,135			1,605	21.3%
Total				10,001	11,916			1,915	19.1%

Note: F2F = Face to Face

Percentages					
Students taking a web class				24.7%	23.3%
Students taking only web classes				8.8%	6.4%
Average no. of web courses taken					
Students in only F2F classes				75.3%	76.7%

Note: Percentages will not add up to 100%.

City Park	Fall 2002	Fall 2003	Fall 2004	Spring 2006	Fall 2006	2002 to 2006	2002 to 2006	SP2006 to FL2006	SP2006 to FL2006
No. of students taking a web class				1,826	1,890			64	3.5%
Students taking only web classes				767	606			-161	-21.0%
Average no. of web courses taken				2.0	1.9			-0.1	0.0%
Students in only F2F classes				4,092	5,196			1,104	27.0%
Total				5,926	7,086			1,160	19.6%

West Bank	Fall 2002	Fall 2003	Fall 2004	Spring 2006	Fall 2006	2002 to 2006	2002 to 2006	SP2006 to FL2006	SP2006 to FL2006
No. of students taking a web class				447	587			140	31.3%
Students taking only web classes				101	139			38	37.6%
Average no. of web courses taken				1.7	1.7			0.0	0.0%
Students in only F2F classes				1,920	2,045			125	6.5%
Total				2,369	2,632			263	11.1%

Charity School of Nursing	Fall 2002	Fall 2003	Fall 2004	Spring 2006	Fall 2006	2002 to 2006	2002 to 2006	SP2006 to FL2006	SP2006 to FL2006
No. of students taking a web class				17	47			30	176.5%
Students taking only web classes				1	0			-1	-100.0%
Average no. of web courses taken				1.1	1.0			-0.1	0.0%
Students in only F2F classes				641	821			180	28.1%
Total				658	868			210	31.9%

Northshore site	Fall 2002	Fall 2003	Fall 2004	Spring 2006	Fall 2006	2002 to 2006	2002 to 2006	SP2006 to FL2006	SP2006 to FL2006
No of students taking a web class				180	257			77	42.8%
Students taking only web classes				9	13			4	44.4%
Average no. of web courses taken				1.3	1.3			0	0.0
Students in only F2F classes				868	1,081			213	24.5%
Total				1,048	1,338			290	27.7%

Fall Enrollment History 2002-2006 by Program

College Wide						Number Change	% Change	Number Change	% Change
	Fall 2002	Fall 2003	Fall 2004	Spring 2006	Fall 2006	2002 to 2006	2002 to 2006	SP2006 to FL2006	SP2006 to FL2006
Accounting	544	501	518	254	310	-234	-43.0%	56	22.0%
Administrative Office Technology*	144	145	130	85	90	-54	-37.5%	5	5.9%
Air Conditioning & Refrigeration	48	9	2	1	1	-47	-97.9%	0	0.0%
American Sign Language Interpreting	75	63	57	28	36	-39	-52.0%	8	28.6%
American Sign Language Studies	36	43	36	18	29	-7	-19.4%	11	61.1%
Business Administration	1,044	1,024	1,109	641	853	-191	-18.3%	212	33.1%
Business Training	22	6	3	0	0	-22	-100.0%	0	0.0%
CADD (Drafting-ITMF)	57	65	93	63	87	30	52.6%	24	38.1%
Care & Development of Young Children *	722	814	845	403	440	-282	-39.1%	37	9.2%
Carpentry	26	20	7	1	1	-25	-96.2%	0	0.0%
Certified Nurse Assistant	43	7	0	0	1	-42	-97.7%	1	0.0%
CET-Architectural Technology	97	110	131	90	106	9	9.3%	16	17.8%
CET-Civil Construction Technology	57	68	52	22	30	-27	-47.4%	8	36.4%
CET-Construction Management	29	33	42	25	38	9	31.0%	13	52.0%
Computer Information Technology	634	572	432	203	216	-418	-65.9%	13	6.4%
Computer Network Technology	274	278	211	131	120	-154	-56.2%	-11	-8.4%
Computer Repair	45	38	39	13	20	-25	-55.6%	7	53.8%
Construction Management	13	17	20	3		-13	-100.0%	-3	-100.0%
Criminal Justice	518	579	543	361	377	-141	-27.2%	16	4.4%
Culinary Arts	192	219	218	117	157	-35	-18.2%	40	34.2%
Culinary Management**	34	17	4	0	0	-34	-100.0%	0	0.0%
Dental Hygiene	39	22	6	4	2	-37	-94.9%	-2	-50.0%
Dental Laboratory Technology	21	24	18	1	0	-21	-100.0%	-1	-100.0%
Diagnostic Medical Sonography	72	98	111	80	103	31	43.1%	23	28.8%
Dietetic Technician	53	58	67	27	30	-23	-43.4%	3	11.1%
Drafting (Certificate)	39	34	6	2	1	-38	-97.4%	-1	-50.0%
Electrical Construction Technician	16	6	22	23	44	28	175.0%	21	91.3%
Electrical Electronics Engineering Technology	148	159	144	75	111	-37	-25.0%	36	48.0%
Electronics Repair	16	11	7	1	0	-16	-100.0%	-1	-100.0%
Emergency Medical Technology	110	102	186	98	124	14	12.7%	26	26.5%
English as a Second Language	278	261	246	195	241	-37	-13.3%	46	23.6%
EST-Biomedical Equip Repair Technology	43	52	66	35	41	-2	-4.7%	6	17.1%
EST-Computer Repair Technology	59	41	54	22	32	-27	-45.8%	10	45.5%
EST-Electronics Repair Technology	31	31	16	4	2	-29	-93.5%	-2	-50.0%
Fine Arts	173	169	140	90	107	-66	-38.2%	17	18.9%
Fire Protection Technology	162	145	125	68	93	-69	-42.6%	25	36.8%
Funeral Service Education	153	176	163	95	105	-48	-31.4%	10	10.5%
General Science	261	331	365	196	221	-40	-15.3%	25	12.8%
General Studies	1,960	2,009	1,894	1182	1,353	-607	-31.0%	171	14.5%
Health Information Technology	186	196	166	81	163	-23	-12.4%	82	101.2%
Horticulture	80	58	59	35	41	-39	-48.8%	6	17.1%
Hospitality	100	83	96	50		-100	-100.0%	-50	-100.0%
Hospitality Management					58	N/A	N/A	N/A	N/A
Interior Design	199	203	188	102	124	-75	-37.7%	22	21.6%
Legal Secretary	53	90	80	36	42	-11	-20.8%	6	16.7%

Fall Enrollment History 2002-2006 by Program (cont.)

College Wide						Number	%	Number	%
	Fall	Fall	Fall	Spring	Fall	Change	Change	Change	Change
	2002	2003	2004	2006	2006	2002	2002	SP2006	SP2006
						to 2006	to 2006	to FL2006	to FL2006
Machine Tool Technology	21	13	15	0	2	-19	-90.5%	2	0.0%
Management	247	249	272	164	197	-50	-20.2%	33	20.1%
Manufacturing	3	3	2	2	0	-3	-100.0%	-2	-100.0%
Massage Therapy		7	28	30	38	N/A	N/A	8	26.7%
Medical Coding			40	64	71	N/A	N/A	7	10.9%
Medical Laboratory Technician	110	160	160	79	75	-35	-31.8%	-4	-5.1%
Motor Vehicle Technology	126	175	268	142	172	46	36.5%	30	21.1%
Music	126	135	140	53	79	-47	-37.3%	26	49.1%
Nuclear Medicine Technology	23	36	43	28	36	13	56.5%	8	28.6%
Nursing	501	646	784	619	788	287	57.3%	169	27.3%
Occupational Therapy Assistant	50	52	72	28	38	-12	-24.0%	10	35.7%
Ophthalmic Medical Assistant	18	16	11	4	6	-12	-66.7%	2	50.0%
Pastry Assistant-Certificate			9	5	5	N/A	N/A	0	0.0%
Performance & Media Arts	181	196	213	118	117	-64	-35.4%	-1	-0.8%
Pharmacy Technician	170	229	266	114	135	-35	-20.6%	21	18.4%
Physical Therapist Assisting	345	302	303	210	250	-95	-27.5%	40	19.0%
Practical Nursing	138	231	225	119	176	38	27.5%	57	47.9%
Pre-Nursing	2,467	3,053	3,256	2150	2,504	37	1.5%	354	16.5%
RadiationTherapy-Certificate		3	10	15	19	N/A	N/A	4	26.7%
Radiologic Technology	1,038	1,359	1,202	706	805	-233	-22.4%	99	14.0%
Real Estate Agent					4	N/A	N/A	N/A	N/A
Respiratory Care Technology	161	173	171	103	109	-52	-32.3%	6	5.8%
Safety & Health Technology	47	29	31	32	23	-24	-51.1%	-9	-28.1%
Surgical Technology	239	237	248	123	127	-112	-46.9%	4	3.3%
Veterinary Technology				31	62	N/A	N/A	31	100.0%
Visual Communications	201	209	183	101	122	-79	-39.3%	21	20.8%
Web Site Design					5	N/A	N/A	N/A	N/A
Welding Technology	3	0	0	0	0	-3	-100.0%	0	0.0%
Workforce	0	0	0	0	1	1	0.0%	1	0.0%
Total	15,121	16,500	16,669	10,001	11,916	-3,205	-21.2%	1,915	19.1%

*Formerly Early Childhood Education ** Food Service Careers

Fall Enrollment History 2002-2006 by Campus

City Park Campus						Number	%	Number	%
	Fall	Fall	Fall	Spring	Fall	Change	Change	Change	Change
	2002	2003	2004	2006	2006	2002	2002	SP2006	SP2006
						to 2006	to 2006	to FL2006	to FL2006
Accounting	436	340	377	164	199	-237	-54.4%	35	21.3%
Administrative Office Technology	104	98	94	53	56	-48	-46.2%	3	5.7%
Air Conditioning & Refrigeration	47	9	2	1	1	-46	-97.9%	0	0.0%
American Sign Language Interpreting	64	53	46	20	24	-40	-62.5%	4	20.0%
American Sign Language Studies	34	30	29	10	20	-14	-41.2%	10	100.0%
Business Administration	841	713	778	393	575	-266	-31.6%	182	46.3%
Business Training	19	4	1	0	0	-19	-100.0%	0	0.0%
CADD (Drafting-ITMF)	46	50	69	39	60	14	30.4%	21	53.8%
Care & Development of Young Children	553	524	544	230	254	-299	-54.1%	24	10.4%
*Carpentry	25	19	7	1	1	-24	-96.0%	0	0.0%
Certified Nurse Assistant	2	0	0	0	1	-1	-50.0%	1	0.0%
CET-Architectural Technology	87	96	110	66	72	-15	-17.2%	6	9.1%
CET-Civil Construction Technology	49	50	43	18	21	-28	-57.1%	3	16.7%
CET-Construction Management	24	28	37	18	26	2	8.3%	8	44.4%
Computer Information Technology	494	426	327	148	146	-348	-70.4%	-2	-1.4%
Computer Network Technology	223	215	183	107	96	-127	-57.0%	-11	-10.3%
Computer Repair	42	30	36	8	17	-25	-59.5%	9	112.5%
Construction Management	11	10	19	3		-11	-100.0%	N/A	N/A
Criminal Justice	388	392	377	202	231	-157	-40.5%	29	14.4%
Culinary Arts	182	202	197	107	140	-42	-23.1%	33	30.8%
Culinary Management**	32	16	4	0	0	-32	-100.0%	0	0.0%
Dental Hygiene	24	8	3	1	0	-24	-100.0%	-1	-100.0%

City Park Campus, continued						Number Change	% Change	Number Change	% Change
	Fall 2002	Fall 2003	Fall 2004	Spring 2006	Fall 2006	2002 to 2006	2002 to 2006	SP2006 to FL2006	SP2006 to FL2006
Dental Laboratory Technology	21	17	11	0	0	-21	-100.0%	0	0.0%
Diagnostic Medical Sonography	68	80	91	53	71	3	4.4%	18	34.0%
Dietetic Technician	44	47	56	22	24	-20	-45.5%	2	9.1%
Drafting (Certificate)	23	27	4	1	0	-23	-100.0%	-1	-100.0%
Electrical Construction Technician	15	5	21	21	41	26	173.3%	20	95.2%
Electrical Electronics Engineering Technology	134	138	121	58	94	-40	-29.9%	36	62.1%
Electronics Repair	12	10	7	1	0	-12	-100.0%	-1	-100.0%
Emergency Medical Technology	102	86	156	86	90	-12	-11.8%	4	4.7%
English as a Second Language	278	260	244	195	241	-37	-13.3%	46	23.6%
EST-Biomedical Equip Repair Technology	42	49	60	31	36	-6	-14.3%	5	16.1%
EST-Computer Repair Technology	53	32	42	10	24	-29	-54.7%	14	140.0%
EST-Electronics Repair Technology	26	25	14	4	2	-24	-92.3%	-2	-50.0%
Fine Arts	139	119	98	49	60	-79	-56.8%	11	22.4%
Fire Protection Technology	160	135	79	63	83	-77	-48.1%	20	31.7%
Funeral Service Education	140	159	141	74	80	-60	-42.9%	6	8.1%
General Science	214	259	260	128	139	-75	-35.0%	11	8.6%
General Studies	1,455	1,325	1,281	638	757	-698	-48.0%	119	18.7%
Health Information Technology	166	169	128	70	76	-90	-54.2%	6	8.6%
Horticulture	78	55	56	34	40	-38	-48.7%	6	17.6%
Hospitality	96	78	88	47		-96	-100.0%	-47	-100.0%
Hospitality Management					54	N/A	N/A	N/A	N/A
Interior Design	186	184	164	81	103	-83	-44.6%	22	27.2%
Legal Secretary	45	63	60	26	26	-19	-42.2%	0	0.0%
Machine Tool Technology	19	12	15	0	2	-17	-89.5%	2	0.0%
Management	203	172	196	99	138	-65	-32.0%	39	39.4%
Manufacturing	4	3	2	2	0	-4	-100.0%	-2	-100.0%
Massage Therapy		1	0	5	4	N/A	N/A	-1	-20.0%
Medical Coding			36	47	51	N/A	N/A	4	8.5%
Medical Laboratory Technician	98	133	121	51	51	-47	-48.0%	0	0.0%
Motor Vehicle Technology	115	167	251	129	161	46	40.0%	32	24.8%
Music	117	123	129	40	67	-50	-42.7%	27	67.5%
Nuclear Medicine Technology	22	31	32	16	26	4	18.2%	10	62.5%
Nursing	0	0	0	0	0	0	0.0%	0	0.0%
Occupational Therapy Assistant	42	37	58	24	30	-12	-28.6%	6	25.0%
Ophthalmic Medical Assistant	15	13	10	4	5	-10	-66.7%	1	25.0%
Pastry Assistant			9	5	5	N/A	N/A	0	0.0%
Performance & Media Arts	167	159	176	88	83	-84	-50.3%	-5	-5.7%
Pharmacy Technician	142	175	197	69	85	-57	-40.1%	16	23.2%
Physical Therapist Assisting	281	230	225	133	160	-121	-43.1%	27	20.3%
Practical Nursing	81	107	89	32	45	-36	-44.4%	13	40.6%
Pre-Nursing	1,923	2,067	2,067	1,171	1,362	-561	-29.2%	191	16.3%
Radiation Therapy-Certificate		3	10	12	13	N/A	N/A	1	8.3%
Radiologic Technology	891	977	805	426	488	-403	-45.2%	62	14.6%
Real Estate Agent					4	N/A	N/A	N/A	N/A
Respiratory Care Technology	132	137	127	67	74	-58	-43.9%	7	10.4%
Safety & Health Technology	46	28	29	27	22	-24	-52.2%	-5	-18.5%
Surgical Technology	215	178	182	88	82	-133	-61.9%	-6	-6.8%
Veterinary Technology				28	45	N/A	N/A	17	60.7%
Visual Communications	167	167	155	82	90	-77	-46.1%	8	9.8%
Web Site Design					3	N/A	N/A	N/A	N/A
Welding Technology	3	0	0	0	0	-3	-100.0%	0	0.0%
Workforce	0	0	0	0	1	1	0.0%	1	0.0%
Total	11,907	11,555	11,386	5,926	7,078	-4,829	-40.6%	1,152	19.4%

*Formerly Early Childhood Education ** Food Service Careers

West Bank Campus					
	Fall 2002	Fall 2003	Fall 2004	Spring 2006	Fall 2006
Accounting	108	113	100	71	79
Administrative Office Technology*	40	38	28	25	26
Air Conditioning & Refrigeration	1	0	0	0	0
American Sign Language Interpreting	11	6	7	6	8
American Sign Language Studies	2	5	4	7	8
Business Administration	203	217	225	187	184
Business Training	3	1	1	0	0
CADD (Drafting-ITMF)	11	11	18	22	20
Care & Development of Young Children*	169	226	223	122	119
Carpentry	1	1	0	0	0
Certified Nurse Assistant	0	0	0	0	0
CET-Architectural Technology	10	9	17	15	24
CET-Civil Construction Technology	8	12	6	3	7
CET-Construction Management	5	3	4	5	7
Computer Information Technology	140	119	82	43	49
Computer Network Technology	51	45	21	16	19
Computer Repair	3	6	1	5	2
Construction Management	2	5	1	0	0
Criminal Justice	130	150	126	131	113
Culinary Arts	10	15	13	7	10
Culinary Management**	2	1	0	0	0
Dental Hygiene	15	14	3	3	2
Dental Laboratory Technology	0	1	2	0	0
Diagnostic Medical Sonography	4	12	9	13	17
Dietetic Technician	9	6	7	5	2
Drafting (Certificate)	16	7	2	1	1
Electrical Construction Technician	1	1	1	2	3
Electrical Electronics Engineering Technology	14	14	15	16	15
Electronics Repair	4	1	0	0	0
Emergency Medical Technology	8	4	25	9	28
English as a Second Language	0	0	1	0	0
EST-Biomedical Equip Repair Technology	1	2	1	1	2
EST-Computer Repair Technology	6	8	8	9	7
EST-Electronics Repair Technology	5	5	2	0	0
Fine Arts	34	43	40	39	41
Fire Protection Technology	2	3	4	1	4
Funeral Service Education	13	13	16	17	18
General Science	47	54	71	59	68
General Studies	505	507	424	391	385
Health Information Technology	20	15	25	10	13
Horticulture	2	2	2	0	0
Hospitality	4	4	5	1	
Hospitality Management					4
Interior Design	13	11	16	17	13
Legal Secretary	8	23	17	7	12
Machine Tool Technology	1	1	0	0	0
Management	44	47	54	48	46
Manufacturing	0	0	0	0	0
Massage Therapy		6	27	24	32
Medical Coding			1	11	12
Medical Laboratory Technician	12	24	22	21	16
Motor Vehicle Technology	11	7	13	11	9
Music	9	7	10	8	6

Number Change	% Change
2002 to 2006	2002 to 2006
-29	-26.9%
-14	-35.0%
-1	-100.0%
-3	-27.3%
6	300.0%
-19	-9.4%
-3	-100.0%
9	81.8%
-50	-29.6%
-1	-100.0%
0	0.0%
14	140.0%
-1	-12.5%
2	40.0%
-91	-65.0%
-32	-62.7%
-1	-33.3%
-2	-100.0%
-17	-13.1%
0	0.0%
-2	-100.0%
-13	-86.7%
0	0.0%
13	325.0%
-7	-77.8%
-15	-93.8%
2	200.0%
1	7.1%
-4	-100.0%
20	250.0%
0	0.0%
1	100.0%
1	16.7%
-5	-100.0%
7	20.6%
2	100.0%
5	38.5%
21	44.7%
-120	-23.8%
-7	-35.0%
-2	-100.0%
-4	-100.0%
N/A	N/A
0	0.0%
4	50.0%
-1	-100.0%
2	4.5%
0	0.0%
N/A	N/A
N/A	N/A
4	33.3%
-2	-18.2%
-3	-33.3%

Number Change	% Change
SP2006 to FL2006	SP2006 to FL2006
8	11.3%
1	4.0%
0	0.0%
2	33.3%
1	14.3%
-3	-1.6%
0	0.0%
-2	-9.1%
-3	-2.5%
0	0.0%
0	0.0%
9	60.0%
4	133.3%
2	40.0%
6	14.0%
3	18.8%
-3	-60.0%
0	0.0%
-18	-13.7%
3	42.9%
0	0.0%
-1	-33.3%
0	0.0%
4	30.8%
-3	-60.0%
0	0.0%
1	50.0%
-1	-6.3%
0	0.0%
19	211.1%
0	0.0%
1	100.0%
-2	-22.2%
0	0.0%
2	5.1%
3	300.0%
1	5.9%
9	15.3%
-6	-1.5%
3	30.0%
0	0.0%
-1	-100.0%
N/A	N/A
-4	-23.5%
5	71.4%
0	0.0%
-2	-4.2%
0	0.0%
8	33.3%
1	9.1%
-5	-23.8%
-2	-18.2%
-2	-25.0%

West Bank Campus, continued					
	Fall 2002	Fall 2003	Fall 2004	Spring 2006	Fall 2006
Nuclear Medicine Technology	1	2	6	4	2
Nursing	0	0	0	0	0
Occupational Therapy Assistant	8	9	9	3	5
Ophthalmic Medical Assistant	3	1	1	0	1
Pastry Assistant			0	0	0
Performance & Media Arts	14	28	28	20	24
Pharmacy Technician	28	37	55	37	40
Physical Therapist Assisting	64	52	55	50	59
Practical Nursing	18	46	35	34	37
Pre-Nursing	544	676	760	620	768
Radiation Therapy-Certificate		0	0	2	5
Radiologic Technology	147	218	208	153	180
Respiratory Care Technology	29	27	30	18	26
Safety & Health Technology	1	1	1	4	1
Surgical Technology	24	33	36	24	27
Veterinary Technology				1	10
Visual Communications	34	31	21	10	15
Web Site Design					1
Welding Technology	0	0	0	0	0
Workforce	0	0	0	0	0
Total	2,633	2,986	2,945	2,369	2,632

Number Change	% Change
2002 to 2006	2002 to 2006
1	100.0%
0	0.0%
-3	-37.5%
-2	-66.7%
N/A	N/A
10	71.4%
12	42.9%
-5	-7.8%
19	105.6%
224	41.2%
N/A	N/A
33	22.4%
-3	-10.3%
0	0.0%
3	12.5%
N/A	N/A
N/A	N/A
-19	-55.9%
N/A	N/A
0	0.0%
0	0.0%
-1	0.0%

Number Change	% Change
SP2006 to FL2006	SP2006 to FL2006
-2	-50.0%
0	0.0%
2	66.7%
1	0.0%
0	0.0%
4	20.0%
3	8.1%
9	18.0%
3	8.8%
148	23.9%
3	150.0%
27	17.6%
8	44.4%
-3	-75.0%
3	12.5%
9	900.0%
5	50.0%
N/A	N/A
0	0.0%
0	0.0%
263	11.1%

Charity Campus					
	Fall 2002	Fall 2003	Fall 2004	Spring 2006	Fall 2006
Certified Nurse Assistant	41	7	0	0	0
Nursing	501	646	785	619	788
Practical Nursing	39	69	75	39	80
Total	581	722	860	658	868

Number Change	% Change
2002 to 2006	2002 to 2006
-41	-100.0%
287	57.3%
41	105.1%
287	49.4%

Number Change	% Change
SP2006 to FL2006	SP2006 to FL2006
0	0.0%
169	27.3%
41	105.1%
210	31.9%

Northshore Site					
	Fall 2002	Fall 2003	Fall 2004	Spring 2006	Fall 2006
Accounting		48	41	19	32
Administrative Office Technology*		9	8	7	8
Air Conditioning & Refrigeration		0	0	0	0
American Sign Language Studies		8	3	1	1
Business Administration		94	106	61	94
Business Training		1	1	0	0
CADD (Drafting-ITMF)		4	6	2	7
Carpentry		0	0	0	0
Certified Nurse Assistant		0	0	0	0
CET-Architectural Technology		5	4	9	10
CET-Civil Construction Technology		6	3	1	2
CET-Construction Management		2	1	2	5
Computer Information Technology		27	23	12	21
Computer Network Technology		18	7	8	5
Computer Repair		2	2	0	1
Construction Management		2	0	0	0

Number Change	% Change
2003 to 2006	2003 to 2006
-16	-33.3%
-1	-11.1%
0	0.0%
-7	-87.5%
0	0.0%
-1	-100.0%
3	75.0%
0	0.0%
0	0.0%
5	100.0%
-4	-66.7%
3	150.0%
-6	-22.2%
-13	-72.2%
-1	-50.0%
-2	-100.0%

Number Change	% Change
SP2006 to FL2006	SP2006 to FL2006
13	68.4%
1	14.3%
0	0.0%
0	0.0%
33	54.1%
0	0.0%
5	250.0%
0	0.0%
0	0.0%
1	11.1%
1	100.0%
3	150.0%
9	75.0%
-3	-37.5%
1	0.0%
0	0.0%

Northshore Site					
	Fall 2002	Fall 2003	Fall 2004	Spring 2006	Fall 2006
Criminal Justice		37	40	28	33
Culinary Arts		2	8	3	7
Dental Hygiene		0	0	0	0
Dental Laboratory Technology		6	5	1	0
Diagnostic Medical Sonography		6	11	14	15
Dietetic Technician		5	4	0	4
Drafting (Certificate)		0	0	0	0
Early Childhood Education		64	78	51	67
Educational Interpreting for the Deaf		4	4	2	4
Electrical Construction Technician		0	0	0	0
Electrical Electronics Engineering Technology		7	8	1	2
Electronics Repair		0	0	0	0
Emergency Medical Technology		12	5	3	6
English as a Second Language		1	1	0	0
EST-Biomedical Equip Repair Technology		1	5	3	3
EST-Computer Repair Technology		1	4	3	1
EST-Electronics Repair Technology		1	0	0	0
Fine Arts		7	2	2	6
Fire Protection Technology		7	42	4	6
Food Service Careers		0	0	0	0
Funeral Service Education		4	6	4	7
General Science		18	33	9	14
General Studies		177	189	153	211
Health Information Technology		12	13	1	74
Horticulture		1	1	1	1
Hospitality		1	3	2	0
Hospitality Management					0
Interior Design		8	8	4	8
Legal Secretary		4	3	3	4
Machine Tool Technology		0	0	0	0
Management		30	22	17	13
Manufacturing		0	0	0	0
Massage Therapy		0	1	1	2
Medical Coding			3	6	8
Medical Laboratory Technician		3	17	7	8
Motor Vehicle Technology		1	4	2	2
Music		5	1	5	6
Nuclear Medicine Technology		3	5	8	8
Nursing		0	0	0	0
Occupational Therapy Assistant		6	5	1	3
Ophthalmic Medical Assistant		2	0	0	0
Pastry Assistant			0	0	0
Performance & Media Arts		9	9	10	10
Pharmacy Technician		17	14	8	10
Physical Therapist Assisting		20	23	27	31
Practical Nursing		9	26	14	14
Pre-Nursing		310	429	359	374
Radiation Therapy-Certificate		0	0	1	1
Radiologic Technology		164	189	127	137
Respiratory Care Technology		9	14	18	9
Safety & Health Technology		0	1	1	0
Surgical Technology		26	30	11	18
Veterinary Technology				2	7
Visual Communications		11	7	9	17
Web Site Design					1
Welding Technology		0	0	0	0
Workforce		0	0	0	0
Total		1,237	1,478	1,048	1,338

Number Change	% Change
2002 to 2006	2002 to 2006
-4	-10.8%
5	250.0%
0	0.0%
-6	-100.0%
9	150.0%
-1	-20.0%
0	0.0%
3	4.7%
0	0.0%
0	0.0%
-5	-71.4%
0	0.0%
-6	-50.0%
-1	-100.0%
2	200.0%
0	0.0%
-1	-100.0%
-1	-14.3%
-1	-14.3%
0	0.0%
3	75.0%
-4	-22.2%
34	19.2%
62	516.7%
0	0.0%
-1	-100.0%
0	0.0%
0	0.0%
0	0.0%
2	0.0%
8	0.0%
5	166.7%
1	100.0%
1	20.0%
5	166.7%
0	0.0%
-3	-50.0%
-2	-100.0%
0	0.0%
1	11.1%
-7	-41.2%
11	55.0%
5	55.6%
64	20.6%
1	0.0%
-27	-16.5%
0	0.0%
0	0.0%
-8	-30.8%
7	0.0%
6	54.5%
1	0.0%
0	0.0%
0	0.0%
101	8.2%

Number Change	% Change
SP2006 to FL2006	SP2006 to FL2006
5	17.9%
4	133.3%
0	0.0%
-1	-100.0%
1	7.1%
4	0.0%
0	0.0%
16	31.4%
2	100.0%
0	0.0%
1	100.0%
0	0.0%
3	100.0%
0	0.0%
-2	-66.7%
0	0.0%
4	200.0%
2	50.0%
0	0.0%
3	75.0%
5	55.6%
58	37.9%
73	7300.0%
0	0.0%
-2	-100.0%
0	0.0%
4	100.0%
1	33.3%
0	0.0%
-4	-23.5%
0	0.0%
1	100.0%
2	33.3%
1	14.3%
0	0.0%
1	20.0%
0	0.0%
2	200.0%
0	0.0%
0	0.0%
0	0.0%
2	25.0%
4	14.8%
0	0.0%
15	4.2%
0	0.0%
10	7.9%
-9	-50.0%
-1	-100.0%
7	63.6%
5	250.0%
8	88.9%
1	0.0%
0	0.0%
0	0.0%
290	27.7%

**Fall Enrollment History 2002-2006 by Program
Ranked by Student Total**

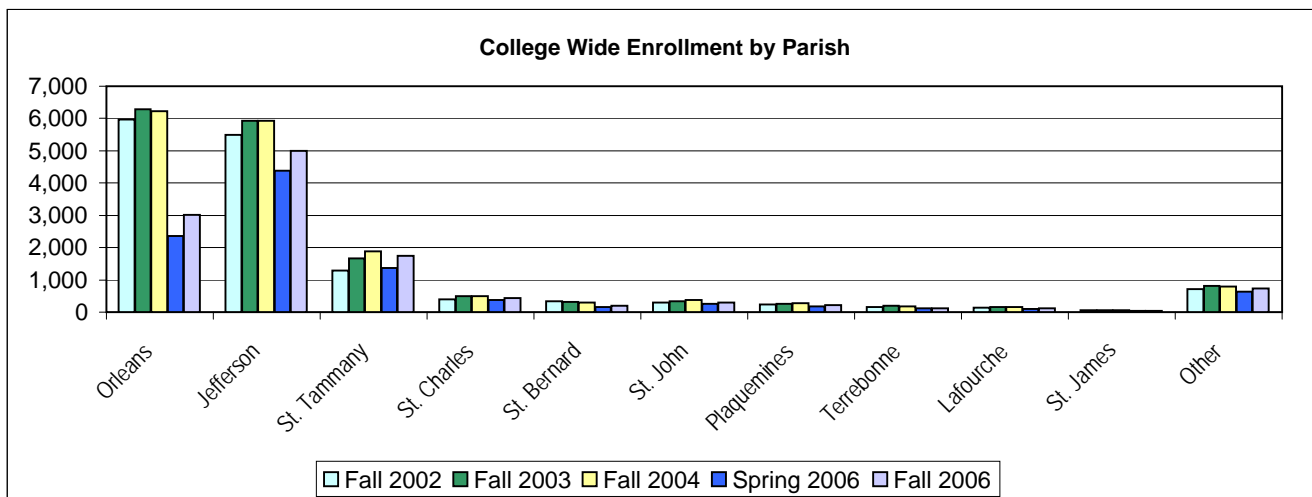
College Wide	Fall 2002	Fall 2003	Fall 2004	Spring 2006	Fall 2006	Number Change	% Change	Number Change	% Change
						2002 to 2006	2002 to 2006	SP2006 to FL2006	SP2006 to FL2006
Pre-Nursing	2,467	3,053	3,256	2,150	2,504	37	1.5%	354	16.5%
General Studies	1,960	2,009	1,894	1,182	1,353	-607	-31.0%	171	14.5%
Business Administration	1,044	1,024	1,109	641	853	-191	-18.3%	212	33.1%
Radiologic Technology	1,038	1,359	1,202	706	805	-233	-22.4%	99	14.0%
Nursing	501	646	784	619	788	287	57.3%	169	27.3%
Care & Development of Young Children	722	814	845	403	440	-282	-39.1%	37	9.2%
Criminal Justice	518	579	543	361	377	-141	-27.2%	16	4.4%
Accounting	544	501	518	254	310	-234	-43.0%	56	22.0%
Physical Therapist Assisting	345	302	303	210	250	-95	-27.5%	40	19.0%
English as a Second Language	278	261	246	195	241	-37	-13.3%	46	23.6%
General Science	261	331	365	196	221	-40	-15.3%	25	12.8%
Computer Information Technology	634	572	432	203	216	-418	-65.9%	13	6.4%
Management	247	249	272	164	197	-50	-20.2%	33	20.1%
Practical Nursing	138	231	225	119	176	38	27.5%	57	47.9%
Motor Vehicle Technology	126	175	268	142	172	46	36.5%	30	21.1%
Health Information Technology	186	196	166	81	163	-23	-12.4%	82	101.2%
Culinary Arts	192	219	218	117	157	-35	-18.2%	40	34.2%
Pharmacy Technician	170	229	266	114	135	-35	-20.6%	21	18.4%
Surgical Technology	239	237	248	123	127	-112	-46.9%	4	3.3%
Emergency Medical Technology	110	102	186	98	124	14	12.7%	26	26.5%
Interior Design	199	203	188	102	124	-75	-37.7%	22	21.6%
Visual Communications	201	209	183	101	122	-79	-39.3%	21	20.8%
Computer Network Technology	274	278	211	131	120	-154	-56.2%	-11	-8.4%
Performance & Media Arts	181	196	213	118	117	-64	-35.4%	-1	-0.8%
Electrical Electronics Engineering Technology	148	159	144	75	111	-37	-25.0%	36	48.0%
Respiratory Care Technology	161	173	171	103	109	-52	-32.3%	6	5.8%
Fine Arts	173	169	140	90	107	-66	-38.2%	17	18.9%
CET-Architectural Technology	97	110	131	90	106	9	9.3%	16	17.8%
Funeral Service Education	153	176	163	95	105	-48	-31.4%	10	10.5%
Diagnostic Medical Sonography	72	98	111	80	103	31	43.1%	23	28.8%
Fire Protection Technology	162	145	125	68	93	-69	-42.6%	25	36.8%
Administrative Office Technology*	144	145	130	85	90	-54	-37.5%	5	5.9%
CADD (Drafting-ITMF)	57	65	93	63	87	30	52.6%	24	38.1%
Music	126	135	140	53	79	-47	-37.3%	26	49.1%
Medical Laboratory Technician	110	160	160	79	75	-35	-31.8%	-4	-5.1%
Medical Coding			40	64	71	71	0.0%	7	10.9%
Veterinary Technology				31	62	62	0.0%	31	100.0%
Hospitality	100	83	96	50		N/A	N/A	N/A	N/A
Hospitality Management					58	N/A	N/A	N/A	N/A
Electrical Construction Technician	16	6	22	23	44	28	175.0%	21	91.3%
Legal Secretary	53	90	80	36	42	-11	-20.8%	6	16.7%
EST-Biomedical Equip Repair Technology	43	52	66	35	41	-2	-4.7%	6	17.1%
Horticulture	80	58	59	35	41	-39	-48.8%	6	17.1%
CET-Construction Management	29	33	42	25	38	9	0.0%	13	52.0%
Massage Therapy		7	28	30	38	N/A	N/A	8	26.7%
Occupational Therapy Assistant	50	52	72	28	38	-12	-24.0%	10	35.7%
American Sign Language Interpreting	75	63	57	28	36	-39	-52.0%	8	28.6%
Nuclear Medicine Technology	23	36	43	28	36	13	0.0%	8	0.0%
EST-Computer Repair Technology	59	41	54	22	32	-27	-45.8%	10	45.5%
CET-Civil Construction Technology	57	68	52	22	30	-27	-47.4%	8	36.4%
Dietetic Technician	53	58	67	27	30	-23	-43.4%	3	11.1%
American Sign Language Studies	36	43	36	18	29	-7	-19.4%	11	61.1%
Safety & Health Technology	47	29	31	32	23	-24	-51.1%	-9	-28.1%
Computer Repair	45	38	39	13	20	-25	-55.6%	7	53.8%
Radiation Therapy-Certificate		3	10	15	19	N/A	N/A	4	26.7%
Ophthalmic Medical Assistant	18	16	11	4	6	-12	0.0%	2	50.0%

Fall Enrollment History 2002-2006 by Program Ranked by Student Total (cont.)

College Wide						Number Change	% Change	Number Change	% Change
	Fall 2002	Fall 2003	Fall 2004	Spring 2006	Fall 2006	2002 to 2006	2002 to 2006	SP2006 to FL2006	SP2006 to FL2006
Pastry Assistant-Certificate			9	5	5	N/A	N/A	0	0.0%
Web Site Design					5	N/A	N/A	N/A	N/A
Real Estate Agent					4	N/A	N/A	N/A	N/A
Dental Hygiene	39	22	6	4	2	-37	-94.9%	-2	0.0%
EST-Electronics Repair Technology	31	31	16	4	2	-29	-93.5%	-2	-50.0%
Machine Tool Technology	21	13	15	0	2	-19	-90.5%	2	0.0%
Air Conditioning & Refrigeration	48	9	2	1	1	-47	-97.9%	0	0.0%
Carpentry	26	20	7	1	1	-25	-96.2%	0	0.0%
Certified Nurse Assistant	43	7	0	0	1	-42	-97.7%	1	0.0%
Drafting (Certificate)	39	34	6	2	1	-38	-97.4%	-1	-50.0%
Workforce	0	0	0	0	1	1	0.0%	1	0.0%
Business Training	22	6	3	0	0	-22	-100.0%	0	0.0%
Culinary Management**	34	17	4	0	0	-34	-100.0%	0	0.0%
Dental Laboratory Technology	21	24	18	1	0	-21	-100.0%	-1	-100.0%
Electronics Repair	16	11	7	1	0	-16	-100.0%	-1	-100.0%
Manufacturing	3	3	2	2	0	-3	-100.0%	-2	-100.0%
Welding Technology	3	0	0	0	0	-3	-100.0%	0	0.0%
Construction Management	13	17	20	3		-13	-100.0%	-3	-100.0%
Total	15,121	16,500	16,669	10,001	11,916	-3,205	-21.2%	1,915	19.1%

Fall Enrollment History 2002-2006 by Parish

College Wide						Number Change	% Change	Number Change	% Change
	Fall 2002	Fall 2003	Fall 2004	Spring 2006	Fall 2006	2002 to 2006	2002 to 2006	SP2006 to FL2006	SP2006 to FL2006
Orleans	5,973	6,278	6,224	2362	3,017	-2,956	-49.5%	655	27.7%
Jefferson	5,500	5,925	5,925	4382	4,989	-511	-9.3%	607	13.9%
St. Tammany	1,294	1,671	1,889	1362	1,741	447	34.5%	379	27.8%
St. Charles	404	487	495	380	441	37	9.2%	61	16.1%
St. Bernard	340	316	296	166	201	-139	-40.9%	35	21.1%
St. John	289	334	370	266	292	3	1.0%	26	9.8%
Plaquemines	234	262	270	188	216	-18	-7.7%	28	14.9%
Terrebonne	161	189	183	118	114	-47	-29.2%	-4	-3.4%
Lafourche	146	160	155	95	116	-30	-20.5%	21	22.1%
St. James	64	62	64	49	49	-15	-23.4%	0	0.0%
Other	716	816	798	633	740	24	3.4%	107	16.9%
Total	15,121	16,500	16,669	10,001	11,916	-3,205	-21.2%	1,915	19.1%



Fall Enrollment History 2002-2006 by Parish

City Park						Number Change 2002 to 2006	% Change 2002 to 2006	Number Change SP2006 to FL2006	% Change SP2006 to FL2006
	Fall 2002	Fall 2003	Fall 2004	Spring 2006	Fall 2006				
Orleans	5,165	5,322	5,179	1644	2,187	-2,978	-57.7%	543	33.0%
Jefferson	3,544	3,700	3,727	2581	2,931	-613	-17.3%	350	13.6%
St. Tammany	1,223	449	467	417	507	-716	-58.5%	90	21.6%
St. Charles	374	440	446	315	353	-21	-5.6%	38	12.1%
St. Bernard	284	255	236	102	135	-149	-52.5%	33	32.4%
St. John	273	314	346	242	264	-9	-3.3%	22	9.1%
Plaquemines	61	64	71	51	60	-1	-1.6%	9	17.6%
Terrebonne	149	170	162	98	90	-59	-39.6%	-8	-8.2%
Lafourche	137	143	133	84	96	-41	-29.9%	12	14.3%
St. James	63	61	61	45	43	-20	-31.7%	-2	-4.4%
Other	634	637	558	347	412	-222	-35.0%	65	18.7%
Total	11,907	11,555	11,386	5,926	7,078	-4,829	-40.6%	1,152	19.4%

West Bank						Number Change 2002 to 2006	% Change 2002 to 2006	Number Change SP2006 to FL2006	% Change SP2006 to FL2006
	Fall 2002	Fall 2003	Fall 2004	Spring 2006	Fall 2006				
Orleans	620	706	759	543	607	-13	-2.1%	64	11.8%
Jefferson	1,729	1,940	1,846	1527	1,697	-32	-1.9%	170	11.1%
St. Tammany	6	5	15	20	24	18	300.0%	4	20.0%
St. Charles	21	30	26	41	48	27	128.6%	7	17.1%
St. Bernard	10	11	10	13	8	-2	-20.0%	-5	-38.5%
St. John	3	5	6	11	13	10	333.3%	2	18.2%
Plaquemines	162	187	183	118	128	-34	-21.0%	10	8.5%
Terrebonne	9	14	13	13	9	0	0.0%	-4	-30.8%
Lafourche	4	8	15	9	16	12	300.0%	7	77.8%
St. James	0	1	1	1	1	1	0.0%	0	0.0%
Other	69	79	71	73	81	12	17.4%	8	11.0%
Total	2,633	2,986	2,945	2,369	2,632	-1	0.0%	263	11.1%

Charity School of Nursing						Number Change 2002 to 2006	% Change 2002 to 2006	Number Change SP2006 to FL2006	% Change SP2006 to FL2006
	Fall 2002	Fall 2003	Fall 2004	Spring 2006	Fall 2006				
Orleans	188	239	267	153	195	7	3.7%	42	27.5%
Jefferson	227	278	333	258	342	115	50.7%	84	32.6%
St. Tammany	65	89	116	113	139	74	113.8%	26	23.0%
St. Charles	9	17	20	22	38	29	322.2%	16	72.7%
St. Bernard	46	49	47	45	50	4	8.7%	5	11.1%
St. John	13	15	16	13	14	1	7.7%	1	7.7%
Plaquemines	11	11	16	18	26	15	136.4%	8	44.4%
Terrebonne	3	3	6	7	14	11	366.7%	7	100.0%
Lafourche	5	7	6	1	4	-1	-20.0%	3	300.0%
St. James	1	0	2	3	5	4	400.0%	2	66.7%
Other	13	14	31	25	41	28	215.4%	16	64.0%
Total	581	722	860	658	868	287	49.4%	210	31.9%

Slidell/Northshore						Number Change 2002 to 2006	% Change 2002 to 2006	Number Change SP2006 to FL2006	% Change SP2006 to FL2006
	Fall 2002	Fall 2003	Fall 2004	Spring 2006	Fall 2006				
Orleans		11	19	22	23	12	109.1%	1	4.5%
Jefferson		7	19	16	19	12	171.4%	3	18.8%
St. Tammany		1,128	1,291	812	1,067	-61	-5.4%	255	31.4%
St. Charles		1	3	2	2	1	100.0%	0	0.0%
St. Bernard		1	3	6	8	7	700.0%	2	33.3%
St. John		0	2	0	1	1	0.0%	1	0.0%
Plaquemines		0	0	1	2	2	0.0%	1	100.0%
Tangipahoa		32	62	84	107	75	234.4%	23	27.4%
Terrebonne		2	2	0	1	-1	-50.0%	1	0.0%
Lafourche		2	1	1	0	-2	-100.0%	-1	-100.0%
St. James		0	0	0	0	0	0.0%	0	0.0%
Washington		31	47	76	69	38	122.6%	-7	-9.2%
Other		22	29	28	39	17	77.3%	11	39.3%
Total		1,237	1,478	1,048	1,338	101	8.2%	290	27.7%

Fall Enrollment History 2002-2006 by Top "Feeder" High Schools

College Wide						Number Change 2002 to 2006	% Change 2002 to 2006	Number Change SP2006 to FL2006	% Change SP2006 to FL2006
	Fall 2002	Fall 2003	Fall 2004	Spring 2006	Fall 2006				
TOTAL First Time Freshman	2,784	2,309	2,941	1,570	1,977	-807	-29.0%	407	25.9%
Alfred T. Bonnabel	57	51	74	54	59	2	3.5%	5	9.3%
Andrew Jackson Fundamental	19	7	5	10	11	-8	-42.1%	1	10.0%
Archbishop Blenk	16	9	10	12	12	-4	-25.0%	0	0.0%
Archbishop Chapelle	21	24	19	18	21	0	0.0%	3	16.7%
Archbishop Rummel	27	10	37	20	31	4	14.8%	11	55.0%
Archbishop Shaw	25	10	18	30	17	-8	-32.0%	-13	-43.3%
Belle Chasse	19	32	28	19	31	12	63.2%	12	63.2%
Bogalussa High School West	8	0	9	6	9	1	12.5%	3	50.0%
Brother Martin	11	8	12	7	17	6	54.5%	10	142.9%
Cabrini	10	4	7	7	9	-1	-10.0%	2	28.6%
Central Lafourche	12	9	5	4	10	-2	-16.7%	6	150.0%
Chalmette	3	6	11	4	14	11	366.7%	10	250.0%
Covington	9	30	32	27	29	20	222.2%	2	7.4%
De la Salle	22	19	20	17	25	3	13.6%	8	47.1%
Destrehan	35	30	38	36	31	-4	-11.4%	-5	-13.9%
East Jefferson	28	36	47	23	50	22	78.6%	27	117.4%
East Saint John	20	12	16	19	17	-3	-15.0%	-2	-10.5%
Edna Karr Magnet	12	17	9	12	9	-3	-25.0%	-3	-25.0%
Fisher Middle	13	10	16	17	20	7	53.8%	3	17.6%
Fountainbleau	9	13	24	18	32	23	255.6%	14	77.8%
Franklinton High	1	4	3	5	12	11	1100.0%	7	140.0%
Grace King	46	32	60	35	45	-1	-2.2%	10	28.6%
Hahnville	27	17	35	19	33	6	22.2%	14	73.7%
Hammond High	2	3	4	5	12	10	500.0%	7	140.0%
Heritage Academy	11	11	7	5	14	3	27.3%	9	180.0%
Immaculata	9	6	12	18	16	7	77.8%	-2	-11.1%
John Ehret	100	69	88	71	103	3	3.0%	32	45.1%
John F. Kennedy Senior	93	89	90	8	16	-77	-82.8%	8	100.0%
John McDonogh Senior	74	45	52	6	11	-63	-85.1%	5	83.3%
L.E. Rabouin Voc	45	41	52	11	13	-32	-71.1%	2	18.2%
L.W. Higgins	73	58	61	59	65	-8	-11.0%	6	10.2%
Lutheran High	4	4	11	4	14	10	250.0%	10	250.0%
Mandeville	8	12	11	7	26	18	225.0%	19	271.4%
Marion Abramson	55	50	71	15	25	-30	-54.5%	10	66.7%
Mc Donogh 35 Senior	44	19	27	13	26	-18	-40.9%	13	100.0%
McMain Magnet	12	7	13	7	14	2	16.7%	7	100.0%
Northshore	25	23	28	28	33	8	32.0%	5	17.9%
O.Perry Walker Senior	39	28	41	36	22	-17	-43.6%	-14	-38.9%
Pearl River	12	13	19	6	13	1	8.3%	7	116.7%
Ponchatoula High	0	7	9	6	11	11	0.0%	5	83.3%
Riverdale	41	29	27	17	34	-7	-17.1%	17	100.0%
Salmen	20	21	39	19	20	0	0.0%	1	5.3%
Sarah Reed	40	52	54	9	17	-23	-57.5%	8	88.9%
Slidell	40	52	49	40	38	-2	-5.0%	-2	-5.0%
South Lafourche	10	6	10	4	9	-1	-10.0%	5	125.0%
St. Augustine	12	8	17	5	17	5	41.7%	12	240.0%
Walter L. Cohen	34	20	27	9	10	-24	-70.6%	1	11.1%
Warren Easton Fundamental	85	49	57	14	18	-67	-78.8%	4	28.6%
West Jefferson	91	53	73	64	67	-24	-26.4%	3	4.7%
Xavier Preparatory	12	13	13	2	13	1	8.3%	11	550.0%
Unknown	316	279	306	71	103	-213	-67.4%	32	45.1%
G.E.D.	337	256	425	200	220	-117	-34.7%	20	10.0%
Non-High School Grads	161	38	1	1	1	-160	-99.4%	0	0.0%
Other	395	558	712	391	432	37	9.4%	41	10.5%

Fall Enrollment History 2002-2006 by Zip Code (zip code order)

College Wide							Number Change	% Change	Number Change	% Change
	Zip Code	Fall 2002	Fall 2003	Fall 2004	Spring 2006	Fall 2006	2002 to 2006	2002 to 2006	SP2006 to FL2006	SP2006 to FL2006
Metairie S of I-10	70001	531	545	574	357	441	-90	-16.9%	84	23.5%
Metairie	70002	217	249	226	141	174	-43	-19.8%	33	23.4%
West Metairie	70003	499	522	504	354	463	-36	-7.2%	109	30.8%
Old Metairie-Bucktown	70005	235	256	251	180	227	-8	-3.4%	47	26.1%
Metairie Clearview N of I-10	70006	192	204	199	124	151	-41	-21.4%	27	21.8%
Belle Chasse	70037	180	187	137	147	178	-2	-1.1%	31	21.1%
Chalmette	70043	160	143	142	45	50	-110	-68.8%	5	11.1%
Destrehan	70047	122	139	131	103	135	13	10.7%	32	31.1%
Gretna	70053	206	230	217	171	197	-9	-4.4%	26	15.2%
Gretna/S of Whitney	70056	612	599	619	446	541	-71	-11.6%	95	21.3%
Harvey	70058	643	729	711	555	595	-48	-7.5%	40	7.2%
South Kenner	70062	189	196	233	180	211	22	11.6%	31	17.2%
North Kenner	70065	677	742	736	559	645	-32	-4.7%	86	15.4%
LaPlace	70068	227	265	286	204	261	34	15.0%	57	27.9%
Marrero	70072	756	862	825	739	818	62	8.2%	79	10.7%
Westwego	70094	378	405	409	348	374	-4	-1.1%	26	7.5%
Algiers	70114	424	471	439	290	301	-123	-29.0%	11	3.8%
Uptown	70115	334	331	334	137	184	-150	-44.9%	47	34.3%
French Quarter-Marigny	70116	116	127	140	57	91	-25	-21.6%	34	59.6%
Bywater/ Lower 9th Ward	70117	638	638	597	120	115	-523	-82.0%	-5	-4.2%
Carrollton/Riverbend	70118	326	363	380	140	178	-148	-45.4%	38	27.1%
Mid City	70119	624	635	629	167	249	-375	-60.1%	82	49.1%
N.O. Postal Box Zone	70121	153	150	165	120	115	-38	-24.8%	-5	-4.2%
Lakefront/Gentilly	70122	637	670	634	109	157	-480	-75.4%	48	44.0%
Harahan-Jefferson	70123	277	283	276	222	279	2	0.7%	57	25.7%
Lakefront/Lakeview	70124	221	243	222	57	53	-168	-76.0%	-4	-7.0%
Broadmoor	70125	187	219	221	41	74	-113	-60.4%	33	80.5%
N.O. East Crowder	70126	642	627	613	67	85	-557	-86.8%	18	26.9%
N.O. East Crowder to Wright Rd	70127	457	479	459	85	100	-357	-78.1%	15	17.6%
N.O. East Wright Rd to I-510	70128	321	331	342	64	87	-234	-72.9%	23	35.9%
N.O. East Past I-510	70129	213	255	251	63	100	-113	-53.1%	37	58.7%
N.O. CBD Lower Garden District	70130	149	141	137	72	110	-39	-26.2%	38	52.8%
Lower Coast Algiers	70131	357	390	435	333	376	19	5.3%	43	12.9%
Slidell	70458	343	413	411	262	331	-12	-3.5%	69	26.3%
Slidell	70460	223	282	304	193	247	24	10.8%	54	28.0%
Slidell	70461	264	294	340	207	320	56	21.2%	113	54.6%
Subtotal		12,730	13,615	13,529	7,459	9,013	-3,717	-29.2%	1,554	20.8%
Other Louisiana		2,282	2,783	3,062	2,311	2,686	404	17.7%	375	16.2%
Total Louisiana		15,012	16,398	16,591	9,770	11,699	-3,313	-22.1%	1,929	19.7%
Out-of-State/Unknown		109	103	78	231	217	108	99.1%	-14	-6.1%
Total		15,121	16,501	16,669	10,001	11,916	-3,205	-21.2%	1,915	19.1%

City Park							Number Change	% Change	Number Change	% Change
	Zip Code	Fall 2002	Fall 2003	Fall 2004	Spring 2006	Fall 2006	2002 to 2006	2002 to 2006	SP2006 to FL2006	SP2006 to FL2006
Metairie S of I-10	70001	502	505	523	314	389	-113	-29.0%	75	19.3%
Metairie	70002	206	238	205	129	157	-49	-31.2%	28	17.8%
West Metairie	70003	463	475	504	321	418	-45	-10.8%	97	23.2%
Old Metairie-Bucktown	70005	227	240	236	158	194	-33	-17.0%	36	18.6%
Metairie Clearview N of I-10	70006	185	194	199	117	137	-48	-35.0%	20	14.6%
Belle Chasse	70037	130	45	45	40	48	-82	-170.8%	8	16.7%
Chalmette	70043	141	117	114	33	40	-101	-252.5%	7	17.5%
Destrehan	70047	116	130	123	86	108	-8	-7.4%	22	20.4%
Gretna	70053	60	68	65	54	63	3	4.8%	9	14.3%
Gretna/S of Whitney	70056	203	194	214	144	182	-21	-11.5%	38	20.9%
Harvey	70058	192	212	232	173	195	3	1.5%	22	11.3%
South Kenner	70062	179	186	219	168	190	11	5.8%	22	11.6%
North Kenner	70065	653	709	671	496	573	-80	-14.0%	77	13.4%
LaPlace	70068	215	250	268	204	240	25	10.4%	36	15.0%
Marrero	70072	227	235	240	233	221	-6	-2.7%	-12	-5.4%
Westwego	70094	154	160	160	131	139	-15	-10.8%	8	5.8%
Algiers	70114	127	135	135	86	95	-32	-33.7%	9	9.5%
Uptown	70115	305	301	296	116	158	-147	-93.0%	42	26.6%
French Quarter-Marigny	70116	113	125	130	50	80	-33	-41.3%	30	37.5%
Bywater/ Lower 9th Ward	70117	615	609	556	107	103	-512	-497.1%	-4	-3.9%
Carrollton/Riverbend	70118	316	341	350	121	156	-160	-102.6%	35	22.4%
Mid City	70119	604	612	601	151	225	-379	-168.4%	74	32.9%
N.O. Postal Box Zone	70121	144	138	145	105	100	-44	-44.0%	-5	-5.0%
Lakefront/Gentilly	70122	609	634	591	89	139	-470	-338.1%	50	36.0%
Harahan-Jefferson	70123	251	259	249	188	229	-22	-9.6%	41	17.9%
Lakefront/Lakeview	70124	205	229	202	51	50	-155	-310.0%	-1	-2.0%
Broadmoor	70125	184	208	206	35	65	-119	-183.1%	30	46.2%
N.O. East Crowder	70126	617	590	576	57	69	-548	-794.2%	12	17.4%
N.O. East Crowder to Wright Rd	70127	440	456	435	70	88	-352	-400.0%	18	20.5%
N.O. East Wright Rd to I-510	70128	306	304	316	54	78	-228	-292.3%	24	30.8%
N.O. East Past I-510	70129	203	240	236	54	89	-114	-128.1%	35	39.3%
N.O. CBD Lower Garden District	70130	131	129	116	62	96	-35	-36.5%	34	35.4%
Lower Coast Algiers	70131	124	131	146	109	106	-18	-17.0%	-3	-2.8%
Slidell	70458	321	92	96	82	106	-215	-202.8%	24	22.6%
Slidell	70460	215	69	76	66	66	-149	-225.8%	0	0.0%
Slidell	70461	252	89	100	72	85	-167	-196.5%	13	15.3%
Subtotal		9,935	9,649	9,576	4,526	5,477	-4,458	-81.4%	951	17.4%
Other Louisiana		1,871	1,835	1,760	1,241	1,443	-428	-29.7%	202	14.0%
Total Louisiana		11,806	11,484	11,336	5,767	6,920	-4,886	-70.6%	1,153	16.7%
Out-of-State/Unknown		101	83	50	160	158	57	36.1%	-2	-1.3%
Total		11,907	11,567	11,386	5,927	7,078	-4,829	-68.2%	1,151	16.3%

West Bank							Number Change	% Change	Number Change	% Change
	Zip Code	Fall 2002	Fall 2003	Fall 2004	Spring 2006	Fall 2006	2002 to 2006	2002 to 2006	SP2006 to FL2006	SP2006 to FL2006
Metairie S of I-10	70001	4	1	6	18	15	11	73.3%	-3	-20.0%
Metairie	70002	2	2	8	5	8	6	75.0%	3	37.5%
West Metairie	70003	5	6	8	10	16	11	68.8%	6	37.5%
Old Metairie-Bucktown	70005	1	3	4	8	9	8	88.9%	1	11.1%
Metairie Clearview N of I-10	70006	0	0	0	3	6	6	100.0%	3	50.0%
Belle Chasse	70037	130	135	137	96	113	-17	-15.0%	17	15.0%
Chalmette	70043	1	3	2	1	0	-1	0.0%	-1	0.0%
Destrehan	70047	2	1	1	8	13	11	84.6%	5	38.5%
Gretna	70053	141	153	141	106	123	-18	-14.6%	17	13.8%
Gretna/S of Whitney	70056	391	380	374	271	321	-70	-21.8%	50	15.6%
Harvey	70058	428	495	440	344	350	-78	-22.3%	6	1.7%
South Kenner	70062	2	1	7	5	14	12	85.7%	9	64.3%
North Kenner	70065	1	5	15	15	18	17	94.4%	3	16.7%
Jean Lafitte	70067	36	48	45	22	20	-16	-80.0%	-2	-10.0%
LaPlace	70068	1	4	6	7	7	6	85.7%	0	0.0%
Marrero	70072	492	583	548	475	549	57	10.4%	74	13.5%
Plaquemines	70083	30	35	33	16	13	-17	-130.8%	-3	-23.1%
Westwego	70094	213	229	231	199	211	-2	-0.9%	12	5.7%
Algiers	70114	291	323	285	195	192	-99	-51.6%	-3	-1.6%
Uptown	70115	9	8	18	13	20	11	55.0%	7	35.0%
French Quarter-Marigny	70116	0	0	4	2	3	3	100.0%	1	33.3%
Bywater/ Lower 9th Ward	70117	9	14	16	7	10	1	10.0%	3	30.0%
Carrollton/Riverbend	70118	3	4	15	14	13	10	76.9%	-1	-7.7%
Mid City	70119	4	6	10	6	9	5	55.6%	3	33.3%
N.O. Postal Box Zone	70121	4	5	3	9	5	1	20.0%	-4	-80.0%
Lakefront/Gentilly	70122	10	13	16	10	9	-1	-11.1%	-1	-11.1%
Harahan-Jefferson	70123	6	6	14	11	24	18	75.0%	13	54.2%
Lakefront/Lakeview	70124	3	2	4	1	1	-2	-200.0%	0	0.0%
Broadmoor	70125	1	3	10	6	6	5	83.3%	0	0.0%
N.O. East Crowder	70126	11	14	15	5	7	-4	-57.1%	2	28.6%
N.O. East Crowder to Wright Rd	70127	5	8	7	8	4	-1	-25.0%	-4	-100.0%
N.O. East Wright Rd to I-510	70128	6	8	7	4	5	-1	-20.0%	1	20.0%
N.O. East Past I-510	70129	3	4	6	7	5	2	40.0%	-2	-40.0%
N.O. CBD Lower Garden District	70130	9	6	13	8	9	0	0.0%	1	11.1%
Lower Coast Algiers	70131	219	247	271	209	242	23	9.5%	33	13.6%
Slidell	70458	2	0	4	2	4	2	50.0%	2	50.0%
Slidell	70460	0	0	1	4	4	4	100.0%	0	0.0%
Slidell	70461	0	1	0	2	3	3	100.0%	1	33.3%
Subtotal		2,475	2,756	2,725	2,132	2,381	-94	-3.9%	249	10.5%
Other Louisiana		152	223	211	204	231	79	34.2%	27	11.7%
Total Louisiana		2,627	2,979	2,936	2,336	2,612	-15	-0.6%	276	10.6%
Out-of-State/Unknown		6	10	9	33	20	14	70.0%	-13	-65.0%
Total		2,633	2,989	2,945	2,369	2,632	-1	0.0%	263	10.0%

Charity School of Nursing							Number Change	% Change	Number Change	% Change
	Zip Code	Fall 2002	Fall 2003	Fall 2004	Spring 2006	Fall 2006	2002 to 2006	2002 to 2006	SP2006 to FL2006	SP2006 to FL2006
Metairie S of I-10	70001	25	33	44	23	35	10	40.0%	12	52.2%
Metairie	70002	9	9	13	7	9	0	0.0%	2	28.6%
West Metairie	70003	31	41	47	23	28	-3	-9.7%	5	21.7%
Old Metairie-Bucktown	70005	7	11	10	13	22	15	214.3%	9	69.2%
Metairie Clearview N of I-10	70006	7	10	7	4	7	0	0.0%	3	75.0%
Belle Chasse	70037	11	7	7	11	17	6	54.5%	6	54.5%
Chalmette	70043	18	22	26	9	10	-8	-44.4%	1	11.1%
Destrehan	70047	4	8	6	9	13	9	225.0%	4	44.4%
Gretna	70053	5	9	11	11	11	6	120.0%	0	0.0%
Gretna/S of Whitney	70056	18	25	31	29	37	19	105.6%	8	27.6%
Harvey	70058	23	22	38	36	50	27	117.4%	14	38.9%
South Kenner	70062	8	8	7	7	7	-1	-12.5%	0	0.0%
North Kenner	70065	23	28	48	47	54	31	134.8%	7	14.9%
LaPlace	70068	11	11	11	9	13	2	18.2%	4	44.4%
Marrero	70072	37	44	37	30	46	9	24.3%	16	53.3%
Westwego	70094	11	16	16	18	23	12	109.1%	5	27.8%
Algiers	70114	6	13	18	8	13	7	116.7%	5	62.5%
Uptown	70115	20	21	20	8	6	-14	-70.0%	-2	-25.0%
French Quarter-Marigny	70116	3	2	5	5	8	5	166.7%	3	60.0%
Bywater/ Lower 9th Ward	70117	14	14	23	5	2	-12	-85.7%	-3	-60.0%
Carrollton/Riverbend	70118	7	18	14	5	8	1	14.3%	3	60.0%
Mid City	70119	16	16	18	9	15	-1	-6.3%	6	66.7%
N.O. Postal Box Zone	70121	5	7	17	6	10	5	100.0%	4	66.7%
Lakefront/Gentilly	70122	18	23	27	9	8	-10	-55.6%	-1	-11.1%
Harahan-Jefferson	70123	20	17	12	23	26	6	30.0%	3	13.0%
Lakefront/Lakeview	70124	13	12	16	4	2	-11	-84.6%	-2	-50.0%
Broadmoor	70125	2	8	5	0	3	1	50.0%	3	0.0%
N.O. East Crowder	70126	14	23	22	4	9	-5	-35.7%	5	125.0%
N.O. East Crowder to Wright Rd	70127	12	14	16	6	8	-4	-33.3%	2	33.3%
N.O. East Wright Rd to I-510	70128	9	19	19	4	4	-5	-55.6%	0	0.0%
N.O. East Past I-510	70129	7	10	6	2	4	-3	-42.9%	2	100.0%
N.O. CBD Lower Garden District	70130	9	6	8	2	4	-5	-55.6%	2	100.0%
Lower Coast Algiers	70131	14	12	17	13	29	15	107.1%	16	123.1%
Slidell	70458	20	27	32	21	29	9	45.0%	8	38.1%
Slidell	70460	8	11	21	21	27	19	237.5%	6	28.6%
Slidell	70461	12	17	15	16	23	11	91.7%	7	43.8%
Subtotal		477	594	690	457	620	143	30.0%	163	35.7%
Other Louisiana		102	128	162	179	229	127	124.5%	50	27.9%
Total Louisiana		579	722	852	636	849	270	46.6%	213	33.5%
Out-of-State/Unknown		2	3	8	22	19	17	850.0%	-3	-13.6%
Total		581	725	860	658	868	287	49.4%	210	31.9%

Slidell/Northshore							Number Change	% Change	Number Change	% Change
	Zip Code	Fall 2002	Fall 2003	Fall 2004	Spring 2006	Fall 2006	2002 to 2006	2002 to 2006	SP2006 to FL2006	SP2006 to FL2006
Metairie S of I-10	70001			1	2	2	1	100.0%	0	0.0%
Metairie	70002		0	0	0	0	0	0.0%	0	0.0%
West Metairie	70003		0	3	1	1	-2	100.0%	0	0.0%
Old Metairie-Bucktown	70005		2	1	1	1	0	100.0%	0	0.0%
Metairie Clearview N of I-10	70006		0	2	0	1	-1	100.0%	1	100.0%
Belle Chasse	70037						0	0.0%	0	0.0%
Chalmette	70043		1	0	2	0	0	0.0%	-2	0.0%
Destrehan	70047		0	1	0	1	0	100.0%	1	100.0%
Gretna	70053						0	0.0%	0	0.0%
Gretna/S of Whitney	70056		0		2	1	1	100.0%	-1	-100.0%
Harvey	70058		0	1	2	0	-1	0.0%	-2	0.0%
South Kenner	70062		1	0	0	0	0	0.0%	0	0.0%
North Kenner	70065		0	2	1	0	-2	0.0%	-1	0.0%
LaPlace	70068		0	1	0	1	0	100.0%	1	100.0%
Marrero	70072				1	3	3	100.0%	2	66.7%
Westwego	70094		0	2	0	1	-1	100.0%	1	100.0%
Algiers	70114		0	1	1	1	0	100.0%	0	0.0%
Uptown	70115		1	0	0	0	0	0.0%	0	0.0%
French Quarter-Marigny	70116		0	1	0	0	-1	0.0%	0	0.0%
Bywater/ Lower 9th Ward	70117		1	2	1	0	-2	0.0%	-1	0.0%
Carrollton/Riverbend	70118		0	1	0	1	0	100.0%	1	100.0%
Mid City	70119		1	0	1	0	0	0.0%	-1	0.0%
N.O. Postal Box Zone	70121						0	0.0%	0	0.0%
Lakefront/Gentilly	70122		0		1	1	1	100.0%	0	0.0%
Harahan-Jefferson	70123		1	1	0	0	-1	0.0%	0	0.0%
Lakefront/Lakeview	70124		0		1	0	0	0.0%	-1	0.0%
Broadmoor	70125						0	0.0%	0	0.0%
N.O. East Crowder	70126		0		1	0	0	0.0%	-1	0.0%
N.O. East Crowder to Wright Rd	70127		1	1	1	0	-1	0.0%	-1	0.0%
N.O. East Wright Rd to I-510	70128				2	0	0	0.0%	-2	0.0%
N.O. East Past I-510	70129		1	3	0	2	-1	100.0%	2	100.0%
N.O. CBD Lower Garden District	70130				0	1	1	100.0%	1	100.0%
Lower Coast Algiers	70131		0	1	2	0	-1	0.0%	-2	0.0%
St. Tammany	70420		32	45	30	39	-6	100.0%	9	23.1%
Washington	70427		23	28	34	27	-1	100.0%	-7	-25.9%
Covington	70433		83	111	94	111	0	100.0%	17	15.3%
Covington	70435		27	41	40	53	12	100.0%	13	24.5%
St. Tammany	70445		58	68	33	52	-16	100.0%	19	36.5%
St. Tammany	70448		48	67	62	77	10	100.0%	15	19.5%
St. Tammany	70452		75	72	46	62	-10	100.0%	16	25.8%
Slidell	70458		294	279	157	192	-87	100.0%	35	18.2%
Slidell	70460		202	209	102	150	-59	100.0%	48	32.0%
Slidell	70461		187	225	117	208	-17	100.0%	91	43.8%
St. Tammany	70471		49	62	53	68	6	100.0%	15	22.1%
Subtotal			1,088	1,232	791	1,057	-175	100.0%	266	25.2%
Other Louisiana			125	235	241	261	26	100.0%	20	7.7%
Total Louisiana			1,213	1,467	1,032	1,318	-149	100.0%	286	21.7%
Out-of-State/Unknown			7	11	16	20	9	100.0%	4	20.0%
Total			1,220	1,478	1,048	1,338	-140	100.0%	290	21.7%