

Delgado

COMMUNITY COLLEGE

Preliminary 5 Year Analysis

Spring 2001-2005



Published on February 26, 2005

By The Office of Institutional Research

Table of Contents	page no.
Summary	
Enrollment by Gender	1
Enrollment by Ethnicity	1
Enrollment by Age	4
Enrollment by Admission Status	6
Enrollment by Classification	6
Full-time/Part-time Status, Headcount, FTE, SCH	9
Enrollment by Award Sought	11
Enrollment by Division	12
Enrollment by Program	13
Enrollment by Program Ranked by Student Total	19
Enrollment by Parish	21
Top 50 "Feeder" High Schools of First Time Freshmen	23
Enrollment by Zip Code	25

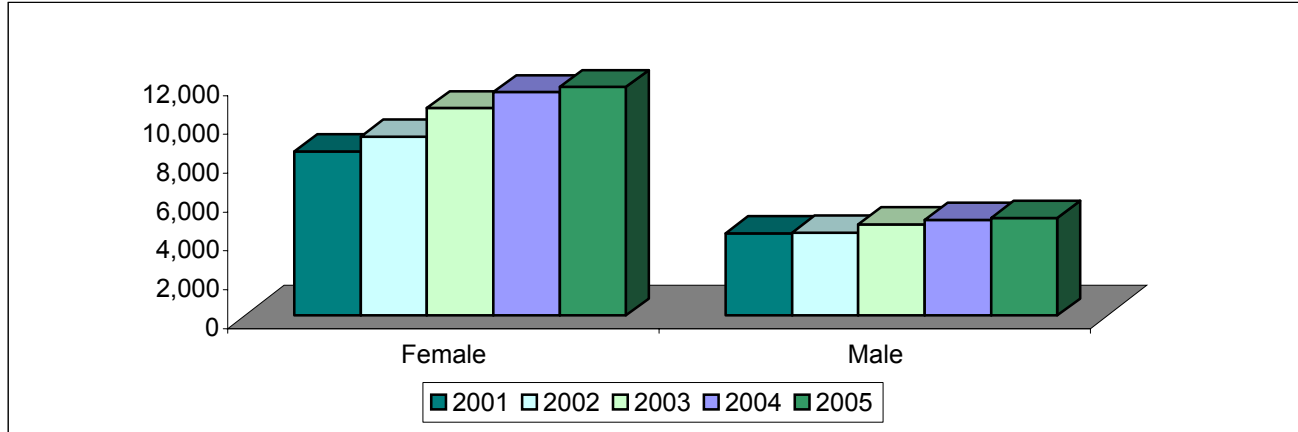
SUMMARY

- ✓ The Spring 2005 enrollment of 16,787 is our highest spring enrollment yet. Our previous highest enrollment was 16,669 in Fall 2004.
- ✓ Enrollment increased by 24.5% from Spring 2001 to Spring 2005. It increased 2% from Spring 2004.
- ✓ City Park, our largest campus, increased by 11.7% over the last five years.
- ✓ West Bank has steadily grown by 30% over the last 5 years.
- ✓ Charity School of Nursing had the largest increase of 46.6% over the last 5 years. (Night classes were added in Fall 2003 which contributed to this increase)
- ✓ The Northshore site, created in Spring 2003, had the second largest increase of 33.2%.
- ✓ Our female enrollment increased by 28.3% since Spring 2001. Our male enrollment increased by 15.6%.
- ✓ Over the last 5 years, our African American enrollment has increased by 28.7%, our Asian enrollment increased by 18.4%, and our white enrollment by 16.2%.
- ✓ Over the last 5 years, continuing student enrollment increased 26.3, while First-time Freshman increased by only 5.7%.
- ✓ Students seeking a 1 year certificate increased by 31.8%, as non-degree seekers decline by 18.7% over the last 5 years.
- ✓ Nursing is our largest growing program with an increase of 1,762 students in Pre-nursing, and an increase of 376 accepted into the program over the last 5 years.
- ✓ Radiologic Technology has also had a large increase over the last five years, going from 541 majors in Spring 2001 to 1,148 in Spring 2005. This includes students who have not been accepted into the program.
- ✓ Approximately 38% of all programs show a decrease in enrollment since 2001, despite the large overall increase.
- ✓ Full Time Equivalent's (FTE's) have increased by 2,523 or 24% over the last 5 years.
- ✓ Scheduled credit hours has increased by 24% since Spring 2001.

Spring Enrollment History 2001-2005 by Gender

College Wide					
Gender	2001	2002	2003	2004	2005
Female	8,446	9,210	10,682	11,505	11,773
Male	4,230	4,260	4,690	4,938	5,014
Total	12,676	13,470	15,372	16,443	16,787

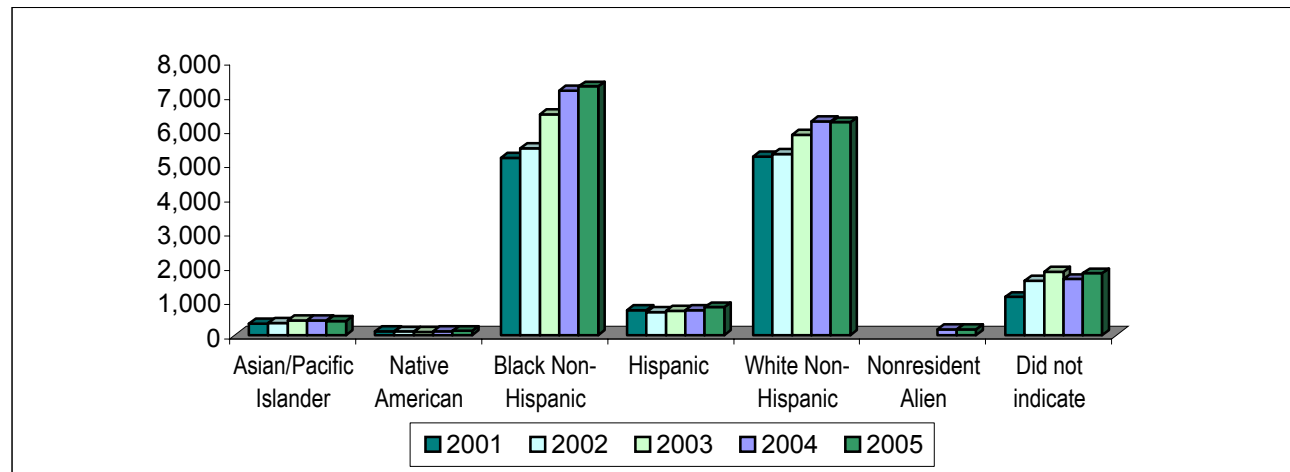
Number Change	% Change
2001 to 2005	2001 to 2005
3,327	28.3%
784	15.6%
4,111	24.5%



Spring Enrollment History 2001-2005 by Ethnicity

College Wide					
Ethnicity	2001	2002	2003	2004	2005
Asian/Pacific Islander	336	357	423	418	412
Native American	111	97	87	110	115
Black Non-Hispanic	5,182	5,463	6,448	7,152	7,267
Hispanic	725	668	702	723	808
White Non-Hispanic	5,213	5,292	5,859	6,243	6,218
Nonresident Alien				164	166
Did not indicate	1,109	1,593	1,853	1,633	1,801
Total	12,676	13,470	15,372	16,443	16,787

Number Change	% Change
2001 to 2005	2001 to 2005
76	18.4%
4	3.5%
2,085	28.7%
83	10.3%
1,005	16.2%
N/A	N/A
692	38.4%
4,111	24.5%



Spring Enrollment History 2001-2005 by Gender by Campus

City Park Campus					
	2001	2002	2003	2004	2005
Female	6,485	7,003	7,402	7,563	7,669
Male	3,615	3,613	3,662	3,744	3,772
Total	10,100	10,616	11,064	11,307	11,441

Number Change
2001 to 2005
1,184
157
1,341

% Change
2001 to 2005
15.4%
4.2%
11.7%

West Bank Campus					
	2001	2002	2003	2004	2005
Female	1,578	1,757	2,043	2,284	2,292
Male	533	579	685	747	719
Total	2,111	2,336	2,728	3,031	3,011

Number Change
2001 to 2005
714
186
900

% Change
2001 to 2005
31.2%
25.9%
29.9%

Charity School of Nursing					
	2001	2002	2003	2004	2005
Female	383	450	527	690	762
Male	82	68	75	98	108
Total	465	518	602	788	870

Number Change
2001 to 2005
379
26
405

% Change
2001 to 2005
49.7%
24.1%
46.6%

Northshore Site					
	2001	2002	2003	2004	2005
Female			710	968	1,050
Male			268	349	415
Total			978	1,317	1,465

Number Change
2003 to 2005
340
147
487

% Change
2003 to 2005
32.4%
35.4%
33.2%

Spring Enrollment History 2001-2005 by Ethnicity by Campus

						Number Change	% Change
City Park Campus	2001	2002	2003	2004	2005	2001 to 2005	2001 to 2005
Asian/Pacific Islander	287	305	334	329	300	13	4.3%
Native American	80	62	42	60	64	-16	-25.0%
Black Non-Hispanic	4156	4,293	4,990	5,297	5,247	1,091	20.8%
Hispanic	596	552	561	530	585	-11	-1.9%
White Non-Hispanic	4054	4,101	3,999	4,041	3,864	-190	-4.9%
Nonresident Alien				157	159	N/A	N/A
Did not indicate	927	1,303	1,138	893	1,222	295	24.1%
Total	10,100	10,616	11,064	11,307	11,441	1,341	11.7%

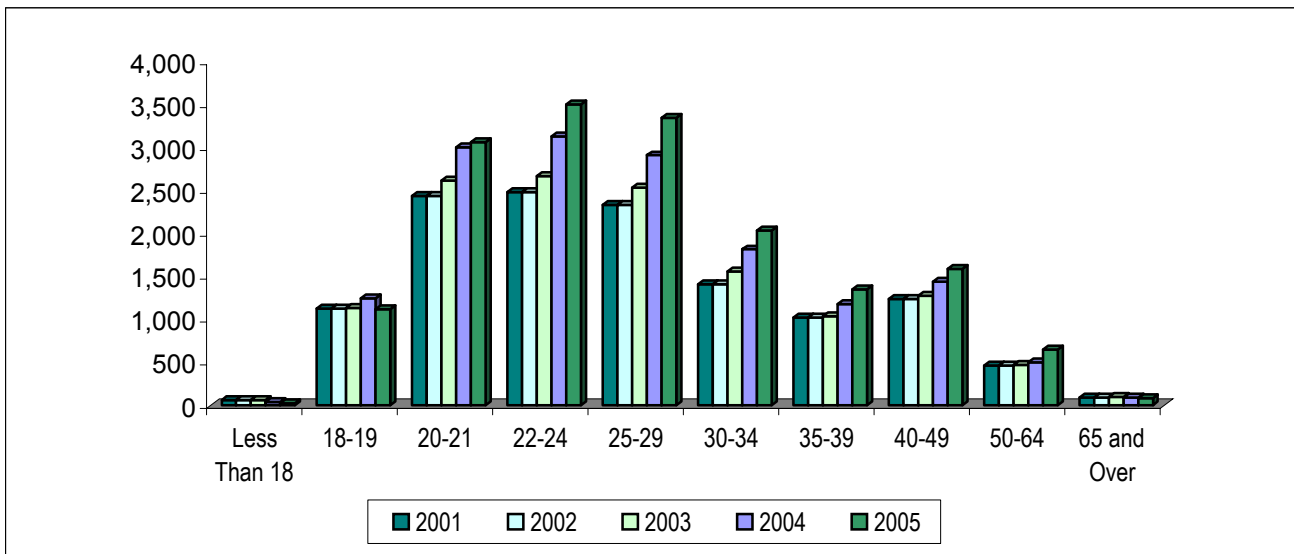
						Number Change	% Change
West Bank Campus	2001	2002	2003	2004	2005	2001 to 2005	2001 to 2005
Asian/Pacific Islander	43	46	69	67	87	44	50.6%
Native American	26	31	30	28	33	7	21.2%
Black Non-Hispanic	919	1039	1,202	1,473	1,549	630	40.7%
Hispanic	105	96	101	124	146	41	28.1%
White Non-Hispanic	853	870	878	934	896	43	4.8%
Nonresident Alien				3	2	N/A	N/A
Did not indicate	165	254	448	402	298	133	44.6%
Total	2,111	2,336	2,728	3,031	3,011	900	29.9%

						Number Change	% Change
Charity School of Nursing	2001	2002	2003	2004	2005	2001 to 2005	2001 to 2005
Asian/Pacific Islander	6	6	14	15	18	12	66.7%
Native American	5	4	7	8	8	3	37.5%
Black Non-Hispanic	107	131	117	183	214	107	50.0%
Hispanic	24	20	18	34	37	13	35.1%
White Non-Hispanic	306	321	377	435	490	184	37.6%
Nonresident Alien				4	4	N/A	N/A
Did not indicate	17	36	69	109	99	82	82.8%
Total	465	518	602	788	870	405	46.6%

						Number Change	% Change
Northshore Site	2001	2002	2003	2004	2005	2003 to 2005	2003 to 2005
Asian/Pacific Islander			6	7	7	1	14.3%
Native American			8	14	10	2	20.0%
Black Non-Hispanic			139	199	257	118	45.9%
Hispanic			22	35	40	18	45.0%
White Non-Hispanic			605	833	968	363	37.5%
Nonresident Alien				0	1	N/A	N/A
Did not indicate			198	229	182	-16	-8.8%
Total			978	1,317	1,465	487	33.2%

Spring Enrollment History 2001-2005 by Age

College Wide						Number Change	% Change
	2001	2002	2003	2004	2005	2001 to 2005	2001 to 2005
Less Than 18	63	62	38	28	24	-39	-162.5%
18-19	1,124	1,133	1,248	1,262	1,119	-5	-0.4%
20-21	2,438	2,618	3,007	3,066	3,067	629	20.5%
22-24	2,485	2,674	3,133	3,498	3,507	1,022	29.1%
25-29	2,339	2,535	2,914	3,256	3,353	1,014	30.2%
30-34	1,411	1,558	1,817	1,978	2,036	625	30.7%
35-39	1,025	1,037	1,181	1,287	1,354	329	24.3%
40-49	1,236	1,279	1,443	1,483	1,592	356	22.4%
50-64	461	473	500	500	650	189	29.1%
65 and Over	93	101	91	85	85	-8	-9.4%
Total	12,675	13,470	15,372	16,443	16,787	4,112	24.5%
Average Age	28	29	28	28	29	1	3.4%



Spring Enrollment History 2001-2005 by Age by Campus

City Park Campus						Number Change	% Change
	2001	2002	2003	2004	2005	2001 to 2005	2001 to 2005
Less Than 18	35	35	20	15	17	-18	-105.9%
18-19	907	908	899	879	822	-85	-10.3%
20-21	1,976	2,080	2,256	2,178	2,183	207	9.5%
22-24	1,983	2,125	2,298	2,513	2,456	473	19.3%
25-29	1,868	1,989	2,062	2,288	2,289	421	18.4%
30-34	1,117	1,209	1,262	1,286	1,300	183	14.1%
35-39	793	804	819	802	844	51	6.0%
40-49	960	998	1,032	942	1,031	71	6.9%
50-64	401	396	357	346	439	38	8.7%
65 and Over	60	72	59	58	60	0	0.0%
Total	10,100	10,616	11,064	11,307	11,441	1,341	11.7%

Spring Enrollment History 2001-2005 by Age by Campus (cont.)

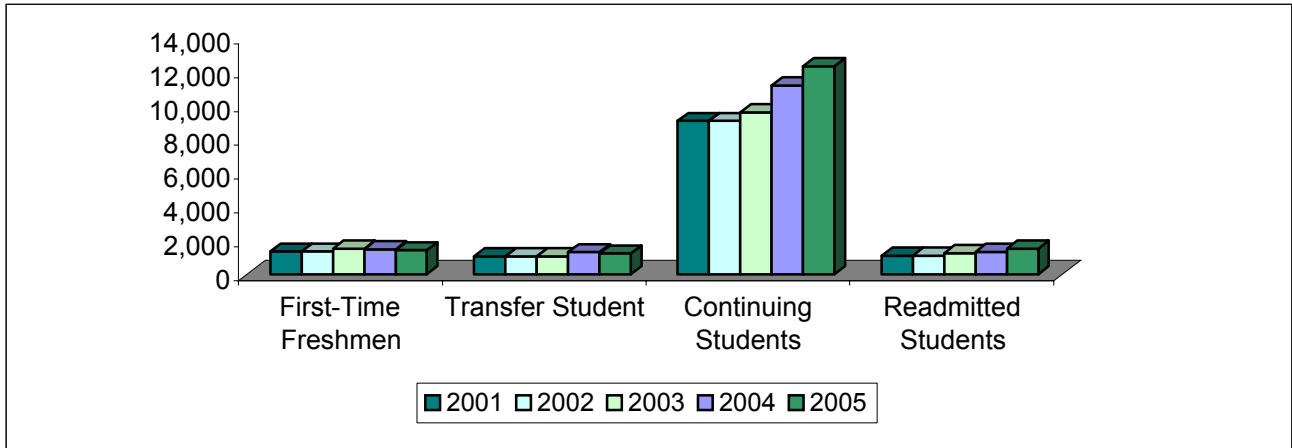
						Number Change	% Change
West Bank Campus						2001 to 2005	2001 to 2005
	2001	2002	2003	2004	2005		
Less Than 18	28	27	17	11	5	-23	-460.0%
18-19	216	223	252	290	197	-19	-9.6%
20-21	443	503	547	587	565	122	21.6%
22-24	409	448	542	619	612	203	33.2%
25-29	321	385	496	535	533	212	39.8%
30-34	203	244	300	335	391	188	48.1%
35-39	182	186	225	254	255	73	28.6%
40-49	218	219	227	278	292	74	25.3%
50-64	57	72	97	98	139	82	59.0%
65 and Over	33	29	25	24	22	-11	-50.0%
Total	2,110	2,336	2,728	3,031	3,011	901	29.9%

						Number Change	% Change
Charity School of Nursing						2001 to 2005	2001 to 2005
	2001	2002	2003	2004	2005		
Less Than 18	0	0	0	0	0	0	0.0%
18-19	1	2	1	2	0	-1	0.0%
20-21	19	35	25	39	17	-2	-11.8%
22-24	93	101	120	148	181	88	48.6%
25-29	150	161	184	227	256	106	41.4%
30-34	91	105	139	171	183	92	50.3%
35-39	50	47	56	96	109	59	54.1%
40-49	58	62	63	82	104	46	44.2%
50-64	3	5	14	23	20	17	85.0%
65 and Over	0	0	0	0	0	0	0.0%
Total	465	518	602	788	870	405	46.6%

						Number Change	% Change
Northshore Site						2003 to 2005	2003 to 2005
	2001	2002	2003	2004	2005		
Less Than 18			1	2	2	1	50.0%
18-19			96	91	100	4	4.0%
20-21			179	262	302	123	40.7%
22-24			173	218	258	85	32.9%
25-29			172	206	275	103	37.5%
30-34			116	186	162	46	28.4%
35-39			81	135	146	65	44.5%
40-49			121	181	165	44	26.7%
50-64			32	33	52	20	38.5%
65 and Over			7	3	3	-4	-133.3%
Total			978	1,317	1,465	487	33.2%

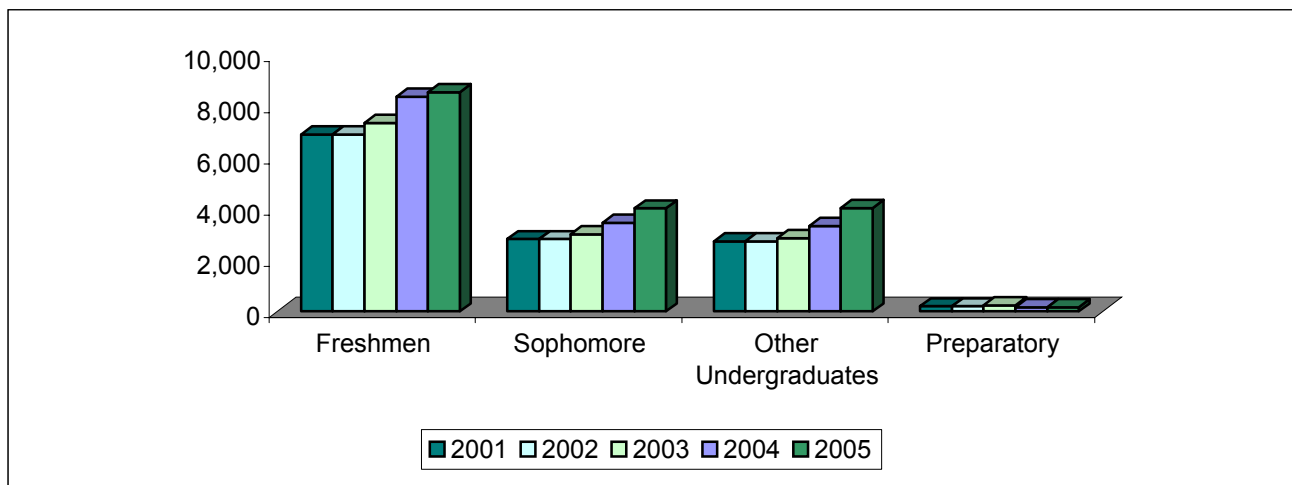
Spring Enrollment History 2001-2005 by Admission Status

College Wide						Number Change 2001 to 2005	% Change 2001 to 2005
	2001	2002	2003	2004	2005		
First-Time Freshmen	1,350	1,533	1,473	1,648	1,432	82	5.7%
Transfer Student	1,074	1,061	1,319	1,200	1,243	169	13.6%
Continuing Students	9,087	9,586	11,191	12,226	12,323	3,236	26.3%
Readmitted Students	1,094	1,249	1,327	1,311	1,518	424	27.9%
Exchange Students	71	41	62	58	219	148	67.6%
Other Students					52	N/A	N/A
Total	12,676	13,470	15,372	16,443	16,787	4,111	24.5%



Spring Enrollment History 2001-2005 by Classification

College Wide						Number Change 2001 to 2005	% Change 2001 to 2005
	2001	2002	2003	2004	2005		
Freshmen	6,923	7,360	8,399	8,688	8,564	1,641	19.2%
Sophomore	2,826	3,011	3,465	3,726	4,024	1,198	29.8%
Other Undergraduates	2,728	2,860	3,343	3,890	4,035	1,307	32.4%
Preparatory	199	239	165	139	164	-35	-21.3%
Total	12,676	13,470	15,372	16,443	16,787	4,111	24.5%



**Spring Enrollment History 2001-2005
Admission Status by Campus**

City Park Campus					
	2001	2002	2003	2004	2005
First-Time Freshmen	1,132	1,226	1,040	1,155	941
Transfer Student	909	887	1,000	835	863
Continuing Students	7,124	7,480	8,054	8,372	8,373
Readmitted Students	866	985	924	897	1,040
Exchange Students	69	38	46	48	172
Other Students					52
Total	10,100	10,616	11,064	11,307	11,441

Number Change
2001 to 2005
-191
-46
1,249
174
103
N/A
1,341

% Change
2001 to 2005
-20.3%
-5.3%
14.9%
16.7%
59.9%
N/A
11.7%

West Bank Campus					
	2001	2002	2003	2004	2005
First-Time Freshmen	217	294	272	315	304
Transfer Student	144	153	148	193	200
Continuing Students	1,545	1,665	2,024	2,244	2,190
Readmitted Students	203	221	268	269	288
Exchange Students	2	3	16	10	29
Other Students					0
Total	2,111	2,336	2,728	3,031	3,011

Number Change
2001 to 2005
87
56
645
85
27
N/A
900

% Change
2001 to 2005
28.6%
28.0%
29.5%
29.5%
93.1%
N/A
29.9%

Charity School of Nursing					
	2001	2002	2003	2004	2005
First-Time Freshmen	1	13	0	7	0
Transfer Student	21	21	15	17	23
Continuing Students	418	441	541	704	772
Readmitted Students	25	43	46	60	75
Exchange Students	0	0	0	0	0
Other Students					0
Total	465	518	602	788	870

Number Change
2001 to 2005
-1
2
354
50
0
N/A
405

% Change
2001 to 2005
0.0%
8.7%
45.9%
66.7%
0.0%
N/A
46.6%

Northshore Site					
	2001	2002	2003	2004	2005
First-Time Freshmen			161	171	187
Transfer Student			156	155	157
Continuing Students			572	906	988
Readmitted Students			89	85	115
Exchange Students			0	0	18
Other Students					0
Total			978	1,317	1,465

Number Change
2003 to 2005
26
1
416
26
18
N/A
487

% Change
2003 to 2005
13.9%
0.6%
42.1%
22.6%
100.0%
N/A
33.2%

Spring Enrollment History 2001-2005 by Classification by Campus

						Number Change	% Change
City Park Campus	2001	2002	2003	2004	2005	2001 to 2005	2001 to 2005
Freshmen	5,610	5,915	6,036	6,015	5,940	330	5.6%
Sophomore	2,273	2,353	2,485	2,560	2,793	520	18.6%
Other Undergraduates	2,019	2,115	2,401	2,600	2,573	554	21.5%
Preparatory	198	233	142	132	135	-63	-46.7%
Total	10,100	10,616	11,064	11,307	11,441	1,341	11.7%

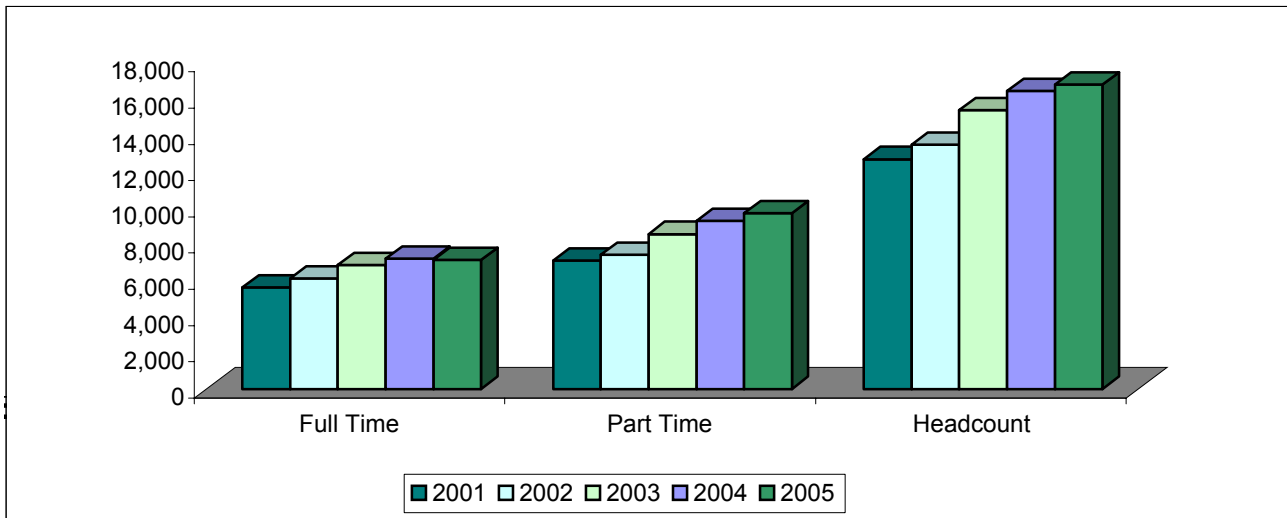
						Number Change	% Change
West Bank Campus	2001	2002	2003	2004	2005	2001 to 2005	2001 to 2005
Freshmen	1,302	1,414	1,609	1,761	1,631	329	20.2%
Sophomore	481	565	714	767	788	307	39.0%
Other Undergraduates	327	354	405	501	570	243	42.6%
Preparatory	1	3	0	2	22	21	95.5%
Total	2,111	2,336	2,728	3,031	3,011	900	29.9%

						Number Change	% Change
Charity School of Nursing	2001	2002	2003	2004	2005	2001 to 2005	2001 to 2005
Freshmen	11	31	18	23	7	-4	-57.1%
Sophomore	72	93	102	109	118	46	39.0%
Other Undergraduates	382	391	481	656	745	363	48.7%
Preparatory	0	3	1	0	0	0	0.0%
Total	465	518	602	788	870	405	46.6%

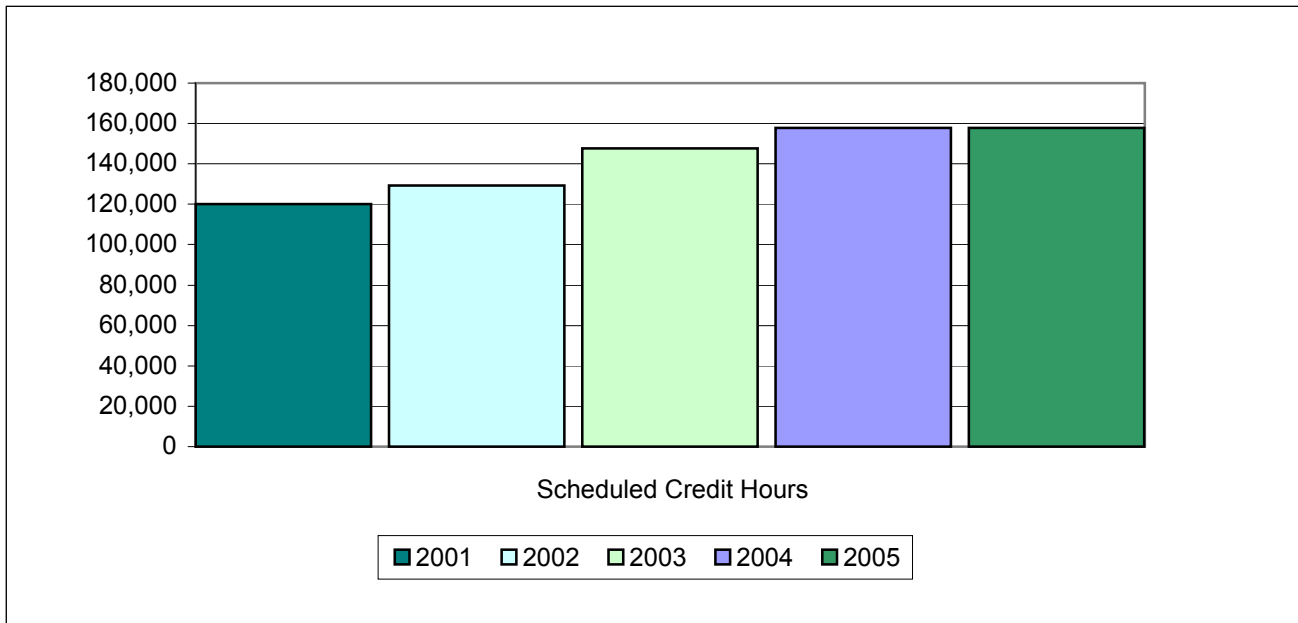
						Number Change	% Change
Northshore Site	2001	2002	2003	2004	2005	2003 to 2005	2003 to 2005
Freshmen			736	889	986	250	25.4%
Sophomore			164	290	325	161	49.5%
Other Undergraduates			56	133	147	91	61.9%
Preparatory			22	5	7	-15	-214.3%
Total			978	1,317	1,465	487	33.2%

Spring Enrollment History 2001-2005 by Full/Part Time Status, Headcount, FTE, SCH

College Wide						Number Change	% Change
	2001	2002	2003	2004	2005	2001 to 2005	2001 to 2005
Full Time	5,593	6,076	6,836	7,175	7,108	1,515	21.3%
Part Time	7,083	7,394	8,536	9,268	9,679	2,596	26.8%
Headcount	12,676	13,470	15,372	16,443	16,787	4,111	24.5%
SCH	120,007	129,395	147,549	157,726	157,847	37,840	24.0%
FTE* Funding (based on 15 SCH)	8,000	8,626	9,837	10,515	10,523	2,523	24.0%
FTE Other (based on 12 SCH)	10,001	10,783	12,296	13,144	13,154	3,153	24.0%



* FTE is calculated by dividing schedule credit hours by 15.



**Spring Enrollment History 2001-2005 by
Full/Part Time Status, Headcount, FTE, SCH**

City Park Campus					
	2001	2002	2003	2004	2005
Full Time	4,665	4,969	5,123	5,177	5,038
Part Time	5,435	5,647	5,941	6,130	6,403
Headcount	10,100	10,616	11,064	11,307	11,441
SCH	96,944	102,920	107,584	109,823	108,504
FTE* Funding (based on 15 SCH)	6,463	6,861	7,172	7,322	7,234
FTE Other (based on 12 SCH)	8,079	8,577	8,965	9,152	9,042

Number Change
2001 to 2005
373
968
1,341
11,560
771
963

% Change
2001 to 2005
7.4%
15.1%
11.7%
10.7%
10.7%
10.7%

West Bank Campus					
	2001	2002	2003	2004	2005
Full Time	795	989	1,174	1,270	1,240
Part Time	1,316	1,347	1,554	1,761	1,771
Headcount	2,111	2,336	2,728	3,031	3,011
SCH	18,373	21,450	25,284	28,084	27,399
FTE* Funding (based on 15 SCH)	1,225	1,430	1,686	1,872	1,827
FTE Other (based on 12 SCH)	1,531	1,788	2,107	2,340	2,283

Number Change
2001 to 2005
445
455
900
9,026
602
752

% Change
2001 to 2005
35.9%
25.7%
29.9%
32.9%
32.9%
32.9%

Charity School of Nursing					
	2001	2002	2003	2004	2005
Full Time	133	118	157	225	271
Part Time	332	400	445	563	599
Headcount	465	518	602	788	870
SCH	4,690	5,025	6,051	8,008	8,988
FTE* Funding (based on 15 SCH)	313	335	403	534	599
FTE Other (based on 12 SCH)	391	419	504	667	749

Number Change
2001 to 2005
138
267
405
4,298
287
358

% Change
2001 to 2005
50.9%
44.6%
46.6%
47.8%
47.8%
47.8%

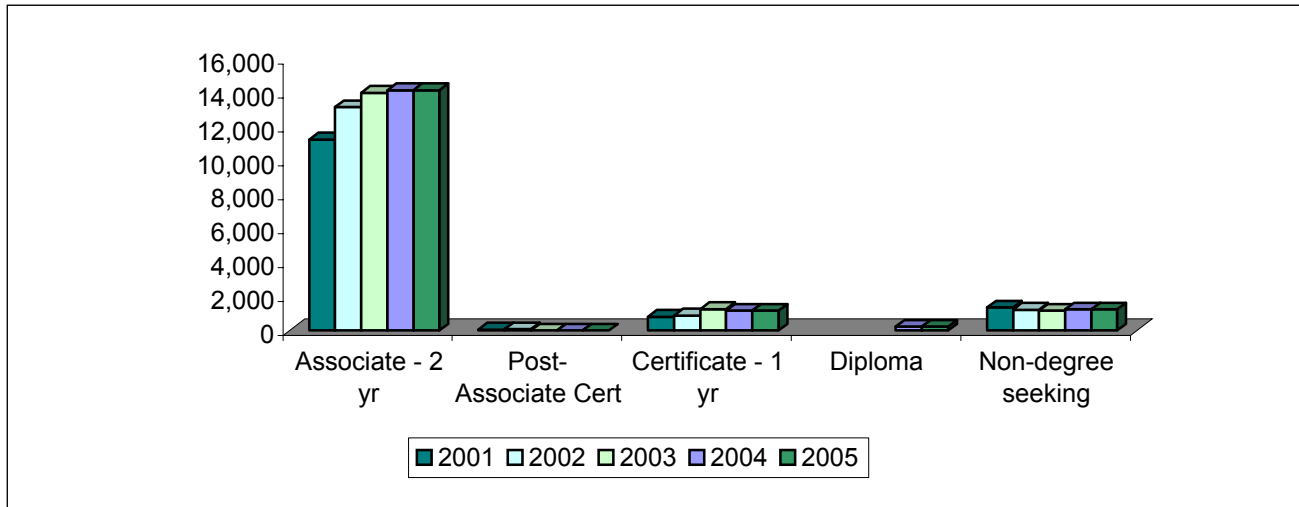
Northshore					
	2001	2002	2003	2004	2005
Full Time			382	503	559
Part Time			596	814	906
Headcount			978	1,317	1,465
SCH			8,630	11,811	12,956
FTE* Funding (based on 15 SCH)			575	787	864
FTE Other (based on 12 SCH)			719	984	1,080

Number Change
2003 to 2005
177
310
487
4,326
864
1,080

% Change
2003 to 2005
31.7%
34.2%
33.2%
33.4%
33.4%
33.4%

Spring Enrollment History 2001-2005 by Award Sought

						Number Change	% Change
College Wide	2001	2002	2003	2004	2005	2001 to 2005	2001 to 2005
Associate - 2 yr	10,385	11,267	13,178	14,020	14,176	3,791	26.7%
Post-Associate Cert	32	46	73	0	0	-32	0.0%
Certificate - 1 yr	794	809	891	1,267	1,164	370	31.8%
Diploma					213	N/A	N/A
Non-degree seeking	1,465	1,348	1,230	1,156	1,234	-231	-18.7%
Total	12,676	13,470	15,372	16,443	16,787	4,111	24.5%



Spring Enrollment History 2001-2005 by Award Sought by Campus

						Number Change	% Change
City Park Campus	2001	2002	2003	2004	2005	2001 to 2005	2001 to 2005
Associate - 2 yr	8,142	8,672	9,294	9,458	9,461	1,319	13.9%
Post-Associate Cert	28	41	63			-28	0.0%
Certificate - 1 yr	679	679	707	895	889	210	23.6%
Diploma					94	N/A	N/A
Non-degree seeking	1,251	1,224	1,000	954	997	-254	-25.5%
Total	10,100	10,616	11,064	11,307	11,441	1,341	11.7%

						Number Change	% Change
West Bank Campus	2001	2002	2003	2004	2005	2001 to 2005	2001 to 2005
Associate - 2 yr	1,804	2,121	2,480	2,672	2,606	802	30.8%
Post-Associate Cert	4	5	7			-4	0.0%
Certificate - 1 yr	89	105	113	211	188	99	52.7%
Diploma					44	N/A	N/A
Non-degree seeking	214	105	128	148	173	-41	-23.7%
Total	2,111	2,336	2,728	3,031	3,011	900	29.9%

Spring Enrollment History 2001-2005 by Award Sought by Campus (cont.)

						Number Change	% Change
						2001 to 2005	2001 to 2005
Charity School of Nursing							
	2001	2002	2003	2004	2005		
Associate - 2 yr	439	474	567	714	815	376	46.1%
Post-Associate Cert	0	0	0			0	0.0%
Certificate - 1 yr	26	25	29	73	0	-26	0.0%
Diploma					54	N/A	N/A
Non-degree seeking	0	19	6	1	1	1	100.0%
Total	465	518	602	788	870	405	46.6%

						Number Change	% Change
						2003 to 2005	2003 to 2005
Northshore Site							
	2001	2002	2003	2004	2005		
Associate - 2 yr			837	1,176	1,294	457	35.3%
Post-Associate Cert			3			-3	0.0%
Certificate - 1 yr			42	88	87	45	51.7%
Diploma					21	N/A	N/A
Non-degree seeking			96	53	63	-33	-52.4%
Total			978	1,317	1,465	487	33.2%

Spring Enrollment History 2001-2005 by Division/Site

						Number Change	% Change
						2001 to 2005	2001 to 2005
	2001	2002	2003*	2004	2005		
City Park Campus							
Liberal Arts	2,839	2,503	2,591	2,734	2,571	-268	-10.4%
Allied Health	1,410	1,371	1,778	1,925	1,951	541	27.7%
Basic Education-CP*	1,363	2,197	2,228	2,020	2,362	999	42.3%
Business & Technology	2,459	2,277	2,051	2,446	2,526	67	2.7%
Community & Workforce Development	923	993	724	208	130	-793	-610.0%
Science & Math	1,106	1,275	1,692	1,974	1,901	795	41.8%
Campus Total	10,100	10,616	11,064	11,307	11,441	1,341	11.7%
West Bank Campus							
Liberal Arts & Sciences	1,206	1,190	1,570	1,782	1,901	695	36.6%
Business, Technology & Math	483	468	519	557	462	-21	-4.5%
Basic Education-WBC	422	678	639	692	648	226	34.9%
Campus Total	2,111	2,336	2,728	3,031	3,011	900	29.9%
Nursing	465	518	602	788	870	405	46.6%
Northshore Site**							
Basic Education-NS					395	N/A	N/A
Covington			165	374	359	194	54.0%
Slidell			813	943	711	-102	-14.3%
Site Total	0	0	978	1,317	1,465	487	33.2%
College Total	12,676	13,470	15,372	16,443	16,787	4,111	24.5%

* Basic Education contains non-degree seeking students and possibly some students that should have been moved.

** Northshore enrollments were reported as a part of City Park prior to Spring 2002.

Spring Enrollment History 2001-2005 by Program

College Wide						Number Change	% Change
	2001	2002	2003	2004	2005		
Accounting	451	511	497	491	489	38	7.8%
Administrative Office Tech	160	143	131	140	137	-23	-16.8%
Air Conditioning & Refrigeration	59	51	37	3	2	-57	-2850.0%
American Sign Language Studies	39	33	45	47	39	0	0.0%
Business Administration	854	922	1,045	1,075	1,108	254	22.9%
Business Training	42	51	17	5	1	-41	-4100.0%
Carpentry	24	20	31	25	4	-20	-500.0%
Certified Nurse Assistant		23	15	2	1	1	100.0%
CET-Architectural Engineering	102	94	112	111	120	18	15.0%
CET-Civil Construction Technology	60	41	50	61	46	-14	-30.4%
CET-Construction Management	18	34	23	32	54	36	66.7%
Computer Information Technology	614	592	603	533	376	-238	-63.3%
Computer Network Technology	276	272	261	244	204	-72	-35.3%
Computer Repair (Certificate)	70	49	36	39	39	-31	-79.5%
Construction Management Technology	18	8	16	13	8	-10	-125.0%
Criminal Justice	508	468	540	583	546	38	7.0%
Culinary Arts	186	193	160	192	215	29	13.5%
Dental Hygiene	84	62	26	19	6	-78	-1300.0%
Dental Laboratory Technology	18	23	18	31	8	-10	-125.0%
Diagnostic Medical Sonography	32	46	73	95	115	83	72.2%
Dietetic Technician	37	35	55	58	60	23	38.3%
Drafting (Certificate)	40	38	33	20	6	-34	-566.7%
Computer Aided Drafting & Design -CADD	41	34	65	80	85	44	51.8%
Early Childhood Education	741	684	754	830	873	132	15.1%
Educational Interpreting for the Deaf	73	76	78	55	59	-14	-23.7%
Electrical Construction Technician	37	32	11	16	29	-8	-27.6%
Electrical Electronics Engineering Technology	119	137	144	149	157	38	24.2%
Electronics Repair	27	15	12	14	4	-23	-575.0%
Emergency Medical Technology	89	86	116	97	178	89	50.0%
English as a Second Language	276	274	238	266	246	-30	-12.2%
EST-Biomedical Equip Repair Technology	28	26	48	51	69	41	59.4%
EST-Computer Repair Technology	27	41	60	47	54	27	50.0%
EST-Electronics Repair Technology	24	23	37	30	16	-8	-50.0%
Fine Arts	120	155	165	174	157	37	23.6%
Fire Protection Technology	179	219	189	164	178	-1	-0.6%
Food Service Careers	5	23	25	17	3	-2	-66.7%
Funeral Service Education	135	135	167	163	169	34	20.1%
General Science	207	244	262	330	340	133	39.1%
General Studies	2,171	1,841	1,989	1,959	2,004	-167	-8.3%
Health Information Technology	148	182	178	189	152	4	2.6%
Horticulture	20	29	42	48	48	28	58.3%
Hospitality	111	108	98	87	82	-29	-35.4%
Interior Design	152	165	194	209	177	25	14.1%
IT- Machine Tool Technology	4	5	16	20	13	9	69.2%

Spring Enrollment History 2001-2005 by Program (cont.)

College Wide, continued						Number Change 2001 to 2005	% Change 2001 to 2005
	2001	2002	2003	2004	2005		
Legal Secretary	9	47	75	99	68	59	86.8%
Machine Tool Technology (Certificate)	10	16				-10	N/A
Management	176	222	242	249	270	94	34.8%
Massage Therapy				17	34	N/A	N/A
Medical Coding - Certificate				8	92	N/A	N/A
Medical Laboratory Technician	77	105	126	135	167	90	53.9%
Motor Vehicle Technology	129	108	127	194	241	112	46.5%
Music	91	109	114	150	133	42	31.6%
Nuclear Medicine Technology	14	17	40	35	46	32	69.6%
Nursing	439	474	568	714	815	376	46.1%
Occupational Therapy Assistant	69	70	40	50	62	-7	-11.3%
Ophthalmic Medical Assistant	30	17	15	15	13	-17	-130.8%
Pastry Art - Certificate				1	5	N/A	N/A
Performance & Media Arts	147	172	193	206	200	53	26.5%
Pharmacy Technician	84	115	177	245	276	192	69.6%
Physical Therapist Assisting	236	276	323	304	346	110	31.8%
Practical Nursing	67	110	163	251	214	147	68.7%
Pre-Nursing	1,520	2,043	2,689	3,029	3,282	1,762	53.7%
Radiologic Technology	541	715	1,118	1,306	1,148	607	52.9%
Radiation Therapy (Certificate)				1	14	N/A	N/A
Respiratory Care Technology	162	161	169	165	177	15	8.5%
Safety & Health Technology	45	40	31	25	36	-9	-25.0%
Surgical Technology	200	199	242	234	267	67	25.1%
Veterinary Technology					15	N/A	N/A
Visual Communications*	182	206	206	196	189	7	3.7%
Welding Technology	21	5	2	0	0	-21	0.0%
Workforce	1	0	0	0	0	-1	0.0%
Total	12,676	13,470	15,372	16,443	16,787	4,111	24.5%

City Park Campus						Number Change 2001 to 2005	% Change 2001 to 2005
	2001	2002	2003	2004	2005		
Accounting	367	404	346	331	358	-9	-2.5%
Administrative Office Technology	119	105	97	95	106	-13	-12.3%
Air Conditioning & Refrigeration	59	50	35	3	2	-57	-2850.0%
American Sign Language Studies	37	31	39	31	30	-7	-23.3%
Business Administration	697	739	747	729	803	106	13.2%
Business Training	33	42	12	3	1	-32	-3200.0%
Carpentry	23	19	29	24	4	-19	-475.0%
Certified Nurse Assistant	0	4	10	1	0	0	0.0%
CET-Architectural Technology	91	81	98	97	104	13	12.5%
CET-Civil Construction Technology	47	33	37	45	41	-6	-14.6%
CET-Construction Management	18	29	19	26	46	28	60.9%
Computer Information Technology	482	481	443	369	281	-201	-71.5%

City Park Campus, continued						Number Change 2001 to 2005	% Change 2001 to 2005
	2001	2002	2003	2004	2005		
Computer Network Technology	240	233	197	189	187	-53	-28.3%
Computer Repair (Certificate)	60	42	34	32	34	-26	-76.5%
Construction Management Technology	17	6	11	10	8	-9	-112.5%
Criminal Justice	404	369	387	391	367	-37	-10.1%
Culinary Arts	178	184	143	181	192	14	7.3%
Dental Hygiene	64	43	14	9	3	-61	-2033.3%
Dental Laboratory Technology	15	19	15	22	5	-10	-200.0%
Diagnostic Medical Sonography	28	41	63	82	89	61	68.5%
Dietetic Technician	37	34	47	43	51	14	27.5%
Drafting (Certificate)	26	25	19	15	4	-22	-550.0%
Computer Aided Drafting & Design -CADD	29	25	47	56	65	36	55.4%
Early Childhood Education	554	515	511	523	578	24	4.2%
Educational Interpreting for the Deaf	60	68	69	44	46	-14	-30.4%
Electrical Construction Technician	34	28	10	15	28	-6	-21.4%
Electrical Electronics Engineering Technology	105	124	131	123	138	33	23.9%
Electronics Repair	24	11	11	14	4	-20	-500.0%
Emergency Medical Technology	85	79	93	79	151	66	43.7%
English as a Second Language	276	274	237	265	244	-32	-13.1%
EST-Biomedical Equip Repair Technology	26	24	45	49	62	36	58.1%
EST-Computer Repair Technology	21	36	49	36	39	18	46.2%
EST-Electronics Repair Technology	22	16	28	26	15	-7	-46.7%
Fine Arts	97	121	128	126	106	9	8.5%
Fire Protection Technology	176	215	162	130	119	-57	-47.9%
Food Service Careers	5	21	25	17	3	-2	-66.7%
Funeral Service Education	129	123	147	148	142	13	9.2%
General Science	166	201	196	243	233	67	28.8%
General Studies	1,621	1,366	1,315	1,341	1,358	-263	-19.4%
Health Information Technology	133	152	157	157	118	-15	-12.7%
Horticulture	20	28	41	46	46	26	56.5%
Hospitality	103	102	92	81	77	-26	-33.8%
Interior Design	141	153	176	189	153	12	7.8%
IT- Machine Tool Technology	2	3	12	14	12	10	83.3%
Legal Secretary	9	43	58	69	46	37	80.4%
Machine Tool Technology (Certificate)*	10	15				N/A	N/A
Management	156	183	174	156	193	37	19.2%
Manufacturing	2	2	2	4	1	-1	0.0%
Massage Therapy				0	4	N/A	N/A
Medical Coding - Certificate				8	79	N/A	N/A
Medical Laboratory Technician	70	91	108	114	123	53	43.1%
Motor Vehicle Technology	123	99	121	186	225	102	45.3%
Music	88	105	104	137	120	32	26.7%
Nuclear Medicine Technology	12	17	39	30	32	20	62.5%
Nursing	0	0	0	0	0	0	0.0%
Occupational Therapy Assistant	59	64	24	32	46	-13	-28.3%
Ophthalmic Medical Assistant	26	14	15	14	12	-14	-116.7%

City Park Campus, continued					
	2001	2002	2003	2004	2005
Pastry Art - Certificate				1	5
Performance & Media Arts	135	157	166	169	176
Pharmacy Technician	75	101	138	188	207
Physical Therapist Assisting	192	217	248	231	247
Practical Nursing	41	80	96	108	94
Pre-Nursing	1,211	1,577	1,884	2,033	2,056
Radiologic Technology	489	630	845	902	783
Radiation Therapy (Certificate)				1	14
Respiratory Care Technology	135	131	139	122	127
Safety & Health Technology	37	38	30	23	34
Surgical Technology	181	174	191	166	189
Veterinary Technology					13
Visual Communications*	157	174	156	163	162
Welding Technology	21	5	2	0	0
Workforce	0	0	0	0	0
Total	10,100	10,616	11,064	11,307	11,441

Number Change	% Change
2001 to 2005	2001 to 2005
N/A	N/A
41	23.3%
132	63.8%
55	22.3%
53	56.4%
845	41.1%
294	37.5%
N/A	N/A
-8	-6.3%
-3	-8.8%
8	4.2%
N/A	N/A
5	3.1%
-21	0.0%
0	0.0%
1,341	11.7%

*was Commercial Arts

West Bank Campus					
	2001	2002	2003	2004	2005
Accounting	84	107	95	108	90
Administrative Office Technology*	41	38	28	39	29
Air Conditioning & Refrigeration	0	1	2	0	0
American Sign Language Studies	2	2	2	5	6
Business Administration	157	183	203	235	213
Business Training	9	9	3	1	0
Carpentry	1	1	2	1	0
Certified Nurse Assistant	0	0	0	0	0
GET-Architectural Technology	11	13	11	7	13
GET-Civil Construction Technology	13	8	10	11	4
GET-Construction Management	0	5	4	4	4
Computer Information Technology	132	111	127	130	79
Computer Network Technology	36	39	57	39	11
Computer Repair (Certificate)	10	7	2	3	1
Construction Management Technology	1	2	5	3	0
Criminal Justice	104	99	130	157	143
Culinary Arts	8	9	7	9	16
Dental Hygiene	20	19	12	10	3
Dental Laboratory Technology	3	4	0	1	0
Diagnostic Medical Sonography	4	5	7	9	10
Dietetic Technician	0	1	6	8	5
Drafting (Certificate)	14	13	14	5	2
Computer Aided Drafting & Design -CADD	12	9	16	19	16
Early Childhood Education	187	169	188	236	220
Educational Interpreting for the Deaf	13	8	6	8	9

Number Change	% Change
2001 to 2005	2001 to 2005
6	6.7%
-12	-41.4%
0	0.0%
4	66.7%
56	26.3%
-9	0.0%
-1	0.0%
0	0.0%
2	15.4%
-9	-225.0%
4	100.0%
-53	-67.1%
-25	-227.3%
-9	-900.0%
-1	0.0%
39	27.3%
8	50.0%
-17	-566.7%
-3	0.0%
6	60.0%
5	100.0%
-12	-600.0%
4	25.0%
33	15.0%
-4	-44.4%

West Bank Campus, continued						Number Change 2001 to 2005	% Change 2001 to 2005
	2001	2002	2003	2004	2005		
Electrical Construction Technician	3	4	1	1	0	-3	0.0%
Electrical Electronics Engineering Technology	14	13	11	18	15	1	6.7%
Electronics Repair	3	4	1	0	0	-3	0.0%
Emergency Medical Technology	4	7	6	11	25	21	84.0%
English as a Second Language	0	0	0	0	1	1	100.0%
EST-Biomedical Equip Repair Technology	2	2	1	0	2	0	0.0%
EST-Computer Repair Technology	6	5	6	9	11	5	45.5%
EST-Electronics Repair Technology	2	7	8	4	1	-1	-100.0%
Fine Arts	23	34	32	43	47	24	51.1%
Fire Protection Technology	3	4	2	1	10	7	70.0%
Food Service Careers	0	2	0	0	0	0	0.0%
Funeral Service Education	6	12	19	15	21	15	71.4%
General Science	41	43	48	62	79	38	48.1%
General Studies	550	475	530	455	442	-108	-24.4%
Health Information Technology	15	30	15	19	23	8	34.8%
Horticulture	0	1	1	2	1	1	100.0%
Hospitality	8	6	5	5	3	-5	-166.7%
Interior Design	11	12	10	9	15	4	26.7%
IT- Machine Tool Technology	0	0	2	2	0	0	0.0%
Legal Secretary	0	4	15	23	20	20	100.0%
Machine Tool Technology (Certificate)*	0	1				N/A	N/A
Management	20	39	41	63	51	31	60.8%
Massage Therapy				17	30	N/A	N/A
Medical Coding - Certificate				0	5	N/A	N/A
Medical Laboratory Technician	7	14	15	18	28	21	75.0%
Motor Vehicle Technology	7	9	5	8	8	1	12.5%
Music	3	4	6	8	7	4	57.1%
Nuclear Medicine Technology	2	0	1	2	7	5	71.4%
Nursing	0	0	0	0	0	0	0.0%
Occupational Therapy Assistant	10	6	11	8	9	-1	-11.1%
Ophthalmic Medical Assistant	4	3	0	0	0	-4	0.0%
Pastry Art - Certificate				0	0	N/A	N/A
Performance & Media Arts	12	15	21	29	17	5	29.4%
Pharmacy Technician	9	14	31	44	54	45	83.3%
Physical Therapist Assisting	44	59	60	52	69	25	36.2%
Practical Nursing	0	5	30	49	45	45	100.0%
Pre-Nursing	309	466	598	671	789	480	60.8%
Radiologic Technology	52	85	174	232	193	141	73.1%
Radiation Therapy (Certificate)				0	0	N/A	N/A
Respiratory Care Technology	27	30	22	34	42	15	35.7%
Safety & Health Technology	8	2	1	2	1	-7	-700.0%
Surgical Technology	19	25	24	44	48	29	60.4%
Veterinary Technology					1	N/A	N/A
Visual Communications*	25	32	38	23	17	-8	-47.1%
Welding Technology	0	0	0	0	0	0	0.0%
Workforce	0	0	0	0	0	0	0.0%
Total	2,111	2,336	2,728	3,031	3,011	900	29.9%

*was Commercial Arts

Charity Campus					
	2001	2002	2003	2004	2005
Certified Nurse Assistant	0	19	5	1	1
Nursing	439	474	568	714	815
Practical Nursing	26	25	29	73	54
Total	465	518	602	788	870

Number Change
2001 to 2005
1
376
28
405

% Change
2001 to 2005
100.0%
46.1%
51.9%
46.6%

Northshore Site					
	2001	2002	2003	2004	2005
Accounting			56	52	41
Administrative Office Technology*			6	6	2
Air Conditioning & Refrigeration			0	0	0
American Sign Language Studies			4	11	3
Business Administration			95	111	92
Business Training			2	1	0
Carpentry			0	0	0
Certified Nurse Assistant			0	0	0
CET-Architectural Technology			3	7	3
CET-Civil Construction Technology			3	5	1
CET-Construction Management			0	2	4
Computer Information Technology			33	34	16
Computer Network Technology			7	16	6
Computer Repair (Certificate)			0	4	4
Construction Management Technology			0	0	0
Criminal Justice			23	35	36
Culinary Arts			10	2	7
Dental Hygiene			0	0	0
Dental Laboratory Technology			3	8	3
Diagnostic Medical Sonography			3	4	16
Dietetic Technician			2	7	4
Drafting (Certificate)			0	0	0
Computer Aided Drafting & Design -CADD			2	5	4
Early Childhood Education			55	71	75
Educational Interpreting for the Deaf			3	3	4
Electrical Construction Technician			0	0	1
Electrical Electronics Engineering Technology			2	8	4
Electronics Repair			0	0	0
Emergency Medical Technology			17	7	2
English as a Second Language			1	1	1
EST-Biomedical Equip Repair Technology			2	2	5
EST-Computer Repair Technology			5	2	4
EST-Electronics Repair Technology			1	0	0
Fine Arts			0	5	4
Fire Protection Technology			25	33	49
Food Service Careers			5	0	0

Number Change
2003 to 2005
-15
-4
0
-1
-3
-2
0
0
0
0
-2
4
-17
-1
4
0
13
-3
0
0
13
2
0
2
2
20
1
1
2
0
-15
0
3
-1
-1
4
24
-5

% Change
2003 to 2005
-36.6%
-200.0%
0.0%
-33.3%
-3.3%
0.0%
0.0%
0.0%
0.0%
-200.0%
100.0%
-106.3%
-16.7%
100.0%
0.0%
36.1%
-42.9%
0.0%
0.0%
81.3%
50.0%
0.0%
50.0%
26.7%
25.0%
100.0%
50.0%
0.0%
-750.0%
0.0%
60.0%
-25.0%
0.0%
100.0%
49.0%
0.0%

Northshore Site, continued						Number Change	% Change
	2001	2002	2003	2004	2005		
Funeral Service Education			1	0	6	5	83.3%
General Science			18	25	28	10	35.7%
General Studies			144	163	204	60	29.4%
Health Information Technology			6	13	11	5	45.5%
Horticulture			0	0	1	1	100.0%
Hospitality			1	1	2	1	50.0%
Interior Design			8	11	9	1	11.1%
IT- Machine Tool Technology			0	0	0	0	0.0%
Legal Secretary			2	7	2	0	0.0%
Machine Tool Technology (Certificate)*						N/A	N/A
Management			27	30	26	-1	-3.8%
Massage Therapy				0	0	0	0.0%
Medical Coding - Certificate				0	8	8	100.0%
Medical Laboratory Technician			3	3	16	13	81.3%
Motor Vehicle Technology			1	0	8	7	87.5%
Music			4	5	6	2	33.3%
Nuclear Medicine Technology			0	3	7	7	100.0%
Nursing			0	0	0	0	0.0%
Occupational Therapy Assistant			5	10	7	2	28.6%
Ophthalmic Medical Assistant			0	1	1	1	100.0%
Pastry Art - Certificate				0	0	0	0.0%
Performance & Media Arts			6	8	7	1	14.3%
Pharmacy Technician			8	13	15	7	46.7%
Physical Therapist Assisting			15	21	30	15	50.0%
Practical Nursing			8	21	21	13	61.9%
Pre-Nursing			207	325	437	230	52.6%
Radiation Therapy (Certificate)				0	0	0	0.0%
Radiologic Technology			99	172	172	73	42.4%
Respiratory Care Technology			8	9	8	0	0.0%
Safety & Health Technology			0	0	1	1	100.0%
Surgical Technology			27	24	30	3	10.0%
Veterinary Technology					1	1	100.0%
Visual Communications*			12	10	10	-2	-20.0%
Welding Technology			0	0	0	0	0.0%
Workforce			0	0	0	0	0.0%
Total			978	1,317	1,465	487	33.2%

**Spring Enrollment History 2001-2005 by Program
Ranked by Student Total**

College Wide						Number Change	% Change
	2001	2002	2003	2004	2005		
Pre-Nursing	1,520	2,043	2,689	3,029	3,282	1,762	53.7%
General Studies	2,171	1,841	1,989	1,959	2,004	-167	-8.3%
Radiologic Technology	541	715	1,118	1,306	1,148	607	52.9%
Business Administration	854	922	1,045	1,075	1,108	254	22.9%
Early Childhood Education	741	684	754	830	873	132	15.1%
Nursing	439	474	568	714	815	376	46.1%
Criminal Justice	508	468	540	583	546	38	7.0%

**Spring Enrollment History 2001-2005 by Program
Ranked by Student Total (cont.)**

College Wide, cont.						Number Change 2001 to 2005	% Change 2001 to 2005
	2001	2002	2003	2004	2005		
Accounting	451	511	497	491	489	38	7.8%
Computer Information Technology	614	592	603	533	376	-238	-63.3%
Physical Therapist Assisting	236	276	323	304	346	110	31.8%
General Science	207	244	262	330	340	133	39.1%
Pharmacy Technician	84	115	177	245	276	192	69.6%
Management	176	222	242	249	270	94	34.8%
Surgical Technology	200	199	242	234	267	67	25.1%
English as a Second Language	276	274	238	266	246	-30	-12.2%
Motor Vehicle Technology	129	108	127	194	241	112	46.5%
Culinary Arts	186	193	160	192	215	29	13.5%
Practical Nursing	67	110	163	251	214	147	68.7%
Computer Network Technology	276	272	261	244	204	-72	-35.3%
Performance & Media Arts	147	172	193	206	200	53	26.5%
Visual Communications*	182	206	206	196	189	7	3.7%
Emergency Medical Technology	89	86	116	97	178	89	50.0%
Fire Protection Technology	179	219	189	164	178	-1	-0.6%
Interior Design	152	165	194	209	177	25	14.1%
Respiratory Care Technology	162	161	169	165	177	15	8.5%
Funeral Service Education	135	135	167	163	169	34	20.1%
Medical Laboratory Technician	77	105	126	135	167	90	53.9%
Electrical Electronics Engineering Technology	119	137	144	149	157	38	24.2%
Fine Arts	120	155	165	174	157	37	23.6%
Health Information Technology	148	182	178	189	152	4	2.6%
Administrative Office Tech	160	143	131	140	137	-23	-16.8%
Music	91	109	114	150	133	42	31.6%
CET-Architectural Engineering	102	94	112	111	120	18	15.0%
Diagnostic Medical Sonography	32	46	73	95	115	83	72.2%
Medical Coding - Certificate				8	92	N/A	N/A
Computer Aided Drafting & Design -CADD	41	34	65	80	85	44	51.8%
Hospitality	111	108	98	87	82	-29	-35.4%
EST-Biomedical Equip Repair Technology	28	26	48	51	69	41	59.4%
Legal Secretary	9	47	75	99	68	59	86.8%
Occupational Therapy Assistant	69	70	40	50	62	-7	-11.3%
Dietetic Technician	37	35	55	58	60	23	38.3%
Educational Interpreting for the Deaf	73	76	78	55	59	-14	-23.7%
CET-Construction Management	18	34	23	32	54	36	66.7%
EST-Computer Repair Technology	27	41	60	47	54	27	50.0%
Horticulture	20	29	42	48	48	28	58.3%
CET-Civil Construction Technology	60	41	50	61	46	-14	-30.4%
Nuclear Medicine Technology	14	17	40	35	46	32	69.6%
American Sign Language Studies	39	33	45	47	39	0	0.0%
Computer Repair (Certificate)	70	49	36	39	39	-31	-79.5%
Safety & Health Technology	45	40	31	25	36	-9	-25.0%
Massage Therapy				17	34	N/A	N/A
Electrical Construction Technician	37	32	11	16	29	-8	-27.6%

**Spring Enrollment History 2001-2005 by Program
Ranked by Student Total (cont.)**

College Wide, cont.					
	2001	2002	2003	2004	2005
EST-Electronics Repair Technology	24	23	37	30	16
Veterinary Technology					15
Radiation Therapy (Certificate)				1	14
IT- Machine Tool Technology	4	5	16	20	13
Ophthalmic Medical Assistant	30	17	15	15	13
Construction Management Technology	18	8	16	13	8
Dental Laboratory Technology	18	23	18	31	8
Dental Hygiene	84	62	26	19	6
Drafting (Certificate)	40	38	33	20	6
Pastry Art - Certificate				1	5
Carpentry	24	20	31	25	4
Electronics Repair	27	15	12	14	4
Food Service Careers	5	23	25	17	3
Air Conditioning & Refrigeration	59	51	37	3	2
Business Training	42	51	17	5	1
Certified Nurse Assistant		23	15	2	1
Welding Technology	21	5	2	0	0
Workforce	1	0	0	0	0
Machine Tool Technology (Certificate)	10	16			

Number Change	% Change
2001 to 2005	2001 to 2005
-8	-50.0%
N/A	N/A
N/A	N/A
9	69.2%
-17	-130.8%
-10	-125.0%
-10	-125.0%
-78	-1300.0%
-34	-566.7%
N/A	N/A
-20	-500.0%
-23	-575.0%
-2	-66.7%
-57	-2850.0%
-41	-4100.0%
-22	-2200.0%
-21	0.0%
-1	0.0%
N/A	N/A

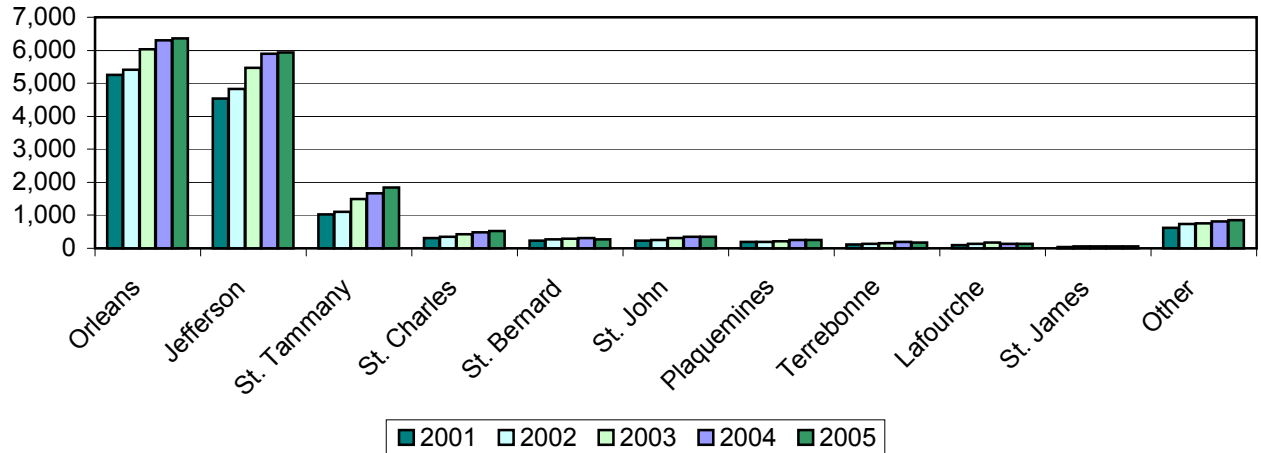
*was Commercial Arts
 **was Office Careers
 ***was Manual Communication

Spring Enrollment History 2001-2005 by Parish

College Wide					
	2001	2002	2003	2004	2005
Orleans	5,262	5,417	6,030	6,304	6,357
Jefferson	4,541	4,833	5,467	5,886	5,925
St. Tammany	1,022	1,102	1,500	1,669	1,846
St. Charles	301	355	428	480	522
St. Bernard	240	266	292	304	281
St. John	239	243	308	343	353
Plaquemines	186	188	207	250	259
Terrebonne	119	142	159	188	177
Lafourche	103	127	165	145	139
St. James	41	64	67	56	66
Other	622	733	749	818	862
Total	12,676	13,470	15,372	16,443	16,787

Number Change	% Change
2001 to 2005	2001 to 2005
1,095	17.2%
1,384	23.4%
824	44.6%
221	42.3%
41	14.6%
114	32.3%
73	28.2%
58	32.8%
36	25.9%
25	37.9%
240	27.8%
4,111	24.5%

**Enrollment by Parish
College Wide**



City Park					
	2001	2002	2003	2004	2005
Orleans	4,510	4,625	5,188	5,293	5,333
Jefferson	3,067	3,156	3,453	3,629	3,649
St. Tammany	962	1,044	499	372	441
St. Charles	274	327	390	437	462
St. Bernard	197	209	229	238	208
St. John	223	227	291	319	332
Plaquemines	38	48	54	57	82
Terrebonne	111	136	145	168	156
Lafourche	97	118	151	127	123
St. James	39	61	66	54	63
Other	582	665	598	613	592
Total	10,100	10,616	11,064	11,307	11,441

Number Change	% Change
2001 to 2005	2001 to 2005
823	15.4%
582	15.9%
-521	-118.1%
188	40.7%
11	5.3%
109	32.8%
44	53.7%
45	28.8%
26	21.1%
24	38.1%
10	1.7%
1,341	11.7%

West Bank					
	2001	2002	2003	2004	2005
Orleans	606	605	672	763	766
Jefferson	1,296	1,491	1,767	1,922	1,902
St. Tammany	5	7	9	6	11
St. Charles	19	20	22	27	36
St. Bernard	5	9	12	16	15
St. John	4	3	4	5	6
Plaquemines	143	134	142	181	163
Terrebonne	1	3	10	15	15
Lafourche	5	6	7	9	14
St. James	0	2	1	1	1
Other	27	56	82	86	82
Total	2,111	2,336	2,728	3,031	3,011

Number Change	% Change
2001 to 2005	2001 to 2005
160	20.9%
606	31.9%
6	54.5%
17	47.2%
10	66.7%
2	33.3%
20	12.3%
14	93.3%
9	64.3%
1	100.0%
55	67.1%
900	29.9%

Charity School of Nursing					
	2001	2002	2003	2004	2005
Orleans	146	187	162	234	243
Jefferson	178	186	242	319	355
St. Tammany	55	51	88	102	127
St. Charles	8	8	14	13	22
St. Bernard	38	48	49	48	55
St. John	12	13	13	19	14
Plaquemines	5	6	11	12	14
Terrebonne	7	3	2	4	5
Lafourche	1	3	6	8	2
St. James	2	1	0	1	2
Other	13	12	15	28	31
Total	465	518	602	788	870

Number Change
2001 to 2005
97
177
72
14
17
2
9
-2
1
0
18
405

% Change
2001 to 2005
39.9%
49.9%
56.7%
63.6%
30.9%
14.3%
64.3%
-40.0%
50.0%
0.0%
58.1%
46.6%

Slidell/Northshore					
	2001	2002	2003	2004	2005
Orleans			8	14	15
Jefferson			5	16	19
St. Tammany			904	1,189	1,267
St. Charles			2	3	2
St. Bernard			2	2	3
St. John			0	0	1
Plaquemines			0	0	0
Tangipahoa			16	35	71
Terrebonne			2	1	1
Lafourche			0	1	0
St. James			0	0	0
Washington			19	38	58
Other			20	18	28
Total			978	1,317	1,465

Number Change
2003 to 2005
7
14
363
0
1
1
0
55
-1
0
0
39
8
487

% Change
2003 to 2005
46.7%
73.7%
28.7%
0.0%
33.3%
100.0%
0.0%
77.5%
-100.0%
0.0%
0.0%
67.2%
28.6%
33.2%

Spring Enrollment History 2001-2005 by Top "Feeder" High Schools

College Wide					
	2001	2002	2003	2004	2005
Alcee Fortier	18	36	21	29	24
Alfred Lawless Senior	8	8	7	17	8
Alfred T. Bonnabel	14	17	26	31	35
Andrew Jackson Fundamental	1	1	4	5	2
Archbishop Blenk	1	7	5	3	4
Archbishop Chapelle	6	4	7	4	3
Archbishop Rummel	8	6	4	5	8
Archbishop Shaw	6	4	5	5	6
Booker T. Washington	9	11	19	10	19

Number Change
2001 to 2005
6
0
21
1
3
-3
0
0
10

% Change
2001 to 2005
25.0%
0.0%
60.0%
50.0%
75.0%
-100.0%
0.0%
0.0%
52.6%

**Spring Enrollment History 2001-2005
by Top "Feeder" High Schools, (cont.)**

College Wide						Number Change	%
	2001	2002	2003	2004	2005	2001 to 2005	2001 to 2005
Brother Martin	5	6	5	6	4	-1	-25.0%
Central Lafourche	1	4	5	12	1	0	0.0%
Chalmette	2	3	5	4	4	2	50.0%
Covington	3	2	12	18	15	12	80.0%
Dela Salle	2	4	7	7	3	1	33.3%
Destrehan	20	23	24	28	16	-4	-25.0%
East Jefferson	22	18	15	18	22	0	0.0%
East Saint John	10	7	6	8	8	-2	-25.0%
F.T. Nicholls	14	13	18	23	13	-1	-7.7%
Fisher Middle	4	10	5	2	1	-3	-300.0%
Fontainebleau	0	4	0	7	9	9	100.0%
Fredrick A. Douglass Senior	7	12	8	3	14	7	50.0%
George W. Carver Sr	15	13	16	17	20	5	25.0%
Grace King	23	20	28	25	27	4	14.8%
Hahnville	8	17	14	20	16	8	50.0%
Immaculata	2	4	5	1	1	-1	-100.0%
J.S. Clark Senior	18	11	18	21	23	5	21.7%
John Ehret	48	39	59	53	49	1	2.0%
John F. Kennedy Senior	44	35	48	49	38	-6	-15.8%
John McDonogh Senior	21	42	42	47	39	18	46.2%
L.B. Landry	9	19	9	21	13	4	30.8%
L.E. Rabouin Voc	22	32	21	30	21	-1	-4.8%
L.W. Higgins	21	41	34	32	34	13	38.2%
Marion Abramson	20	21	31	74	30	10	33.3%
Mc Donogh 35 Senior	19	55	30	18	15	-4	-26.7%
McMain Magnet	11	5	4	5	3	-8	-266.7%
Northshore	10	6	9	10	11	1	9.1%
O.Perry Walker Senior	22	28	24	39	25	3	12.0%
Pearl River	2	5	8	4	3	1	33.3%
Riverdale	17	15	15	21	14	-3	-21.4%
Salmen	11	7	8	5	8	-3	-37.5%
Sarah Reed	20	25	23	32	32	12	37.5%
Slidell	15	16	18	23	17	2	11.8%
St. Augustine	2	5	6	5	12	10	83.3%
St. Mary's Academy	1	94	8	4	2	1	50.0%
Terrebonne	1	4	5	5	5	4	80.0%
Walter L. Cohen	14	13	20	16	17	3	17.6%
Warren Easton Fundamental	33	48	40	27	23	-10	-43.5%
West Jefferson	35	35	34	59	48	13	27.1%
West St. John	1	28	0	5	1	0	0.0%
Xavier Preparatory	5	3	4	1	3	-2	-66.7%
Unknown	336	274	151	308	130	-206	-158.5%
G.E.D.	187	250	249	242	260	73	28.1%
Non-High School Grads	29	42	30	120	13	-16	-123.1%
Other	167	81	254	64	260	93	35.8%
TOTAL First Time Freshman	1,350	1,533	1,473	1,648	1,432	82	5.7%

Spring Enrollment History 2001-2005 by Zip Code (zip code order)

College Wide							Number Change	% Change
	Zip Code	2001	2002	2003	2004	2005	2001 to 2005	2001 to 2005
Metairie S of I-10	70001	484	459	502	557	546	62	11.4%
Metairie	70002	182	208	232	246	257	75	29.2%
West Metairie	70003	433	434	488	517	559	126	22.5%
Old Metairie-Bucktown	70005	229	211	229	256	229	0	0.0%
Metairie Clearview N of I-10	70006	190	190	172	217	197	7	3.6%
Belle Chasse	70037	125	130	152	188	191	66	34.6%
Chalmette	70043	130	127	132	158	143	13	9.1%
Destrehan	70047	91	128	125	125	149	58	38.9%
Gretna	70053	149	181	195	217	213	64	30.0%
Gretna/S of Whitney	70056	495	536	606	603	648	153	23.6%
Harvey	70058	475	564	672	717	725	250	34.5%
South Kenner	70062	156	158	191	209	235	79	33.6%
North Kenner	70065	620	618	687	732	714	94	13.2%
LaPlace	70068	178	187	245	267	282	104	36.9%
Marrero	70072	592	695	748	876	833	241	28.9%
Westwego	70094	265	319	367	406	420	155	36.9%
Algiers	70114	403	399	443	498	448	45	10.0%
Uptown	70115	326	343	338	317	324	-2	-0.6%
French Quarter-Marigny	70116	142	126	133	148	155	13	8.4%
Bywater/ Lower 9th Ward	70117	514	564	634	636	649	135	20.8%
Carrollton/Riverbend	70118	316	337	326	374	403	87	21.6%
Mid City	70119	503	568	615	636	646	143	22.1%
N.O. Postal Box Zone	70121	143	141	144	147	150	7	4.7%
Lakefront/Gentilly	70122	545	587	629	643	627	82	13.1%
Harahan-Jefferson	70123	228	231	265	276	282	54	19.1%
Lakefront/Lakeview	70124	201	195	229	242	211	10	4.7%
Broadmoor	70125	192	172	201	212	233	41	17.6%
N.O. East Crowder	70126	539	546	629	606	627	88	14.0%
N.O. East Crowder to Wright Rd	70127	356	385	448	464	462	106	22.9%
N.O. East Wright Rd to I-510	70128	256	264	307	359	359	103	28.7%
N.O. East Past I-510	70129	175	186	216	233	265	90	34.0%
N.O. CBD Lower Garden District	70130	107	122	144	149	131	24	18.3%
Lower Coast Algiers	70131	368	349	390	422	445	77	17.3%
Slidell	70458	301	316	402	396	417	116	27.8%
Slidell	70460	174	185	239	275	298	124	41.6%
Slidell	70461	191	224	271	279	336	145	43.2%
Subtotal		10,774	11,385	12,746	13,603	13,809	3,035	22.0%
Other Louisiana		1,776	1,985	2,222	2,754	2,899	1,123	38.7%
Total Louisiana		12,550	13,370	14,968	16,357	16,708	4,158	24.9%
Out-of-State/Unknown		126	100	404	86	79	-47	-59.5%
Total		12,676	13,470	15,372	16,443	16,787	4,111	24.5%

City Park							Number Change	% Change
	Zip Code	2001	2002	2003	2004	2005	2001 to 2005	2001 to 2005
Metairie S of I-10	70001	456	434	463	514	491	35	7.1%
Metairie	70002	176	202	223	236	231	55	23.8%
West Metairie	70003	416	408	458	466	500	84	16.8%
Old Metairie-Bucktown	70005	220	205	220	241	204	-16	-7.8%
Metairie Clearview N of I-10	70006	182	184	162	205	186	4	2.2%
Belle Chasse	70037	15	29	36	40	53	38	71.7%
Chalmette	70043	104	105	107	128	104	0	0.0%
Destrehan	70047	86	124	118	118	141	55	39.0%
Gretna	70053	43	44	52	71	57	14	24.6%
Gretna/S of Whitney	70056	176	186	188	196	219	43	19.6%
Harvey	70058	167	187	208	211	219	52	23.7%
South Kenner	70062	149	152	181	198	221	72	32.6%
North Kenner	70065	588	595	663	687	653	65	10.0%
LaPlace	70068	168	173	231	248	266	98	36.8%
Marrero	70072	166	203	208	222	255	89	34.9%
Westwego	70094	119	134	140	156	164	45	27.4%
Algiers	70114	118	111	121	132	128	10	7.8%
Uptown	70115	310	322	307	285	296	-14	-4.7%
French Quarter-Marigny	70116	135	121	128	141	144	9	6.3%
Bywater/ Lower 9th Ward	70117	492	545	618	609	608	116	19.1%
Carrollton/Riverbend	70118	308	328	308	344	383	75	19.6%
Mid City	70119	486	552	592	606	618	132	21.4%
N.O. Postal Box Zone	70121	138	133	136	135	128	-10	-7.8%
Lakefront/Gentilly	70122	532	569	601	603	585	53	9.1%
Harahan-Jefferson	70123	216	208	244	256	251	35	13.9%
Lakefront/Lakeview	70124	187	180	215	222	191	4	2.1%
Broadmoor	70125	188	165	196	203	222	34	15.3%
N.O. East Crowder	70126	519	527	612	574	591	72	12.2%
N.O. East Crowder to Wright Rd	70127	348	372	430	441	435	87	20.0%
N.O. East Wright Rd to I-510	70128	242	247	292	338	330	88	26.7%
N.O. East Past I-510	70129	172	178	207	220	242	70	28.9%
N.O. CBD Lower Garden District	70130	101	113	133	136	116	15	12.9%
Lower Coast Algiers	70131	114	94	131	276	163	49	30.1%
Slidell	70458	285	299	120	72	104	-181	-174.0%
Slidell	70460	162	178	65	57	78	-84	-107.7%
Slidell	70461	183	210	93	74	83	-100	-120.5%
Subtotal		8,467	8,817	9,207	9,661	9,660	1,193	12.3%
Other Louisiana		1,522	1,700	1,748	1,584	1,720	198	11.5%
Total Louisiana		9,989	10,517	10,955	11,245	11,380	1,391	12.2%
Out-of-State/Unknown		111	99	109	62	61	-50	-82.0%
Total		10,100	10,616	11,064	11,307	11,441	1,341	11.7%

West Bank							Number Change	% Change
	Zip Code	2001	2002	2003	2004	2005	2001 to 2005	2001 to 2005
Metairie S of I-10	70001	6	3	8	4	13	7	53.8%
Metairie	70002	1	0	1	1	7	6	85.7%
West Metairie	70003	1	3	1	4	11	10	90.9%
Old Metairie-Bucktown	70005	1	0	1	0	13	12	92.3%
Metairie Clearview N of I-10	70006	3	1	1	1	2	-1	-50.0%
Belle Chasse	70037	107	98	105	139	130	23	17.7%
Chalmette	70043	1	2	2	5	7	6	85.7%
Destrehan	70047	1	1	1	1	2	1	50.0%
Gretna	70053	102	132	135	136	144	42	29.2%
Gretna/S of Whitney	70056	290	331	397	380	400	110	27.5%
Harvey	70058	293	361	439	477	462	169	36.6%
South Kenner	70062	0	0	2	3	10	10	100.0%
North Kenner	70065	0	1	3	6	12	12	100.0%
Jean Lafitte	70067	35	28	34	7	41	6	14.6%
LaPlace	70068	0	2	3	3	7	7	100.0%
Marrero	70072	400	461	502	607	535	135	25.2%
Plaquemines	70083	1	27	23	30	28	27	96.4%
Westwego	70094	134	172	217	229	238	104	43.7%
Algiers	70114	274	278	316	351	303	29	9.6%
Uptown	70115	9	7	10	8	10	1	10.0%
French Quarter-Marigny	70116	2	1	2	4	6	4	66.7%
Bywater/ Lower 9th Ward	70117	7	6	5	13	21	14	66.7%
Carrollton/Riverbend	70118	5	5	5	11	12	7	58.3%
Mid City	70119	3	5	9	8	9	6	66.7%
N.O. Postal Box Zone	70121	0	3	2	3	6	6	100.0%
Lakefront/Gentilly	70122	3	6	9	13	17	14	82.4%
Harahan-Jefferson	70123	2	5	6	4	12	10	83.3%
Lakefront/Lakeview	70124	2	0	1	2	2	0	0.0%
Broadmoor	70125	2	2	2	4	6	4	66.7%
N.O. East Crowder	70126	7	6	9	14	17	10	58.8%
N.O. East Crowder to Wright Rd	70127	2	1	9	6	9	7	77.8%
N.O. East Wright Rd to I-510	70128	4	2	3	5	12	8	66.7%
N.O. East Past I-510	70129	1	3	1	2	13	12	92.3%
N.O. CBD Lower Garden District	70130	1	4	7	8	7	6	85.7%
Lower Coast Algiers	70131	245	238	249	276	263	18	6.8%
Slidell	70458	1	1	3	1	1	0	0.0%
Slidell	70460	2	0	0	1	2	0	0.0%
Slidell	70461	0	1	2	0	1	1	100.0%
Subtotal		1,948	2,197	2,525	2,767	2,791	843	30.2%
Other Louisiana		149	139	187	255	216	67	31.0%
Total Louisiana		2,097	2,336	2,712	3,022	3,007	910	30.3%
Out-of-State/Unknown		14	0	16	9	4	-10	-250.0%
Total		2,111	2,336	2,728	3,031	3,011	900	29.9%

Charity School of Nursing							Number Change	% Change
	Zip Code	2001	2002	2003	2004	2005	2001 to 2005	2001 to 2005
Metairie S of I-10	70001	22	22	31	39	42	20	47.6%
Metairie	70002	5	6	8	9	17	12	70.6%
West Metairie	70003	16	23	25	45	46	30	65.2%
Old Metairie-Bucktown	70005	8	6	8	14	12	4	33.3%
Metairie Clearview N of I-10	70006	5	5	9	10	9	4	44.4%
Belle Chasse	70037	3	3	11	9	8	5	62.5%
Chalmette	70043	25	20	22	24	32	7	21.9%
Destrehan	70047	4	3	6	6	6	2	33.3%
Gretna	70053	4	5	7	10	12	8	66.7%
Gretna/S of Whitney	70056	26	19	21	27	28	2	7.1%
Harvey	70058	15	16	25	29	42	27	64.3%
South Kenner	70062	7	6	7	7	4	-3	-75.0%
North Kenner	70065	32	22	20	38	47	15	31.9%
LaPlace	70068	10	12	11	15	8	-2	-25.0%
Marrero	70072	26	31	38	45	41	15	36.6%
Westwego	70094	12	13	10	20	18	6	33.3%
Algiers	70114	11	10	6	15	17	6	35.3%
Uptown	70115	7	14	21	24	18	11	61.1%
French Quarter-Marigny	70116	5	4	3	3	5	0	0.0%
Bywater/ Lower 9th Ward	70117	15	13	9	13	19	4	21.1%
Carrollton/Riverbend	70118	3	4	13	19	8	5	62.5%
Mid City	70119	14	11	13	22	19	5	26.3%
N.O. Postal Box Zone	70121	5	5	6	9	15	10	66.7%
Lakefront/Gentilly	70122	10	12	17	25	23	13	56.5%
Harahan-Jefferson	70123	10	18	15	15	18	8	44.4%
Lakefront/Lakeview	70124	12	15	13	18	18	6	33.3%
Broadmoor	70125	2	5	3	5	5	3	60.0%
N.O. East Crowder	70126	13	13	8	17	18	5	27.8%
N.O. East Crowder to Wright Rd	70127	6	12	8	15	17	11	64.7%
N.O. East Wright Rd to I-510	70128	10	15	12	15	17	7	41.2%
N.O. East Past I-510	70129	2	5	6	9	6	4	66.7%
N.O. CBD Lower Garden District	70130	5	5	4	5	7	2	28.6%
Lower Coast Algiers	70131	9	17	10	12	18	9	50.0%
Slidell	70458	15	16	27	27	1	-14	-1400.0%
Slidell	70460	10	7	12	16	2	-8	-400.0%
Slidell	70461	8	13	16	17	1	-7	-700.0%
Subtotal		392	426	481	648	624	232	37.2%
Other Louisiana		72	91	119	136	238	166	69.7%
Total Louisiana		464	517	600	784	862	398	46.2%
Out-of-State/Unknown		1	1	2	4	8	7	87.5%
Total		465	518	602	788	870	405	46.6%

Slidell/Northshore							Number Change	% Change
	Zip Code	2001	2002	2003	2004	2005	2003 to 2005	2003 to 2005
Metairie S of I-10	70001						0	0.0%
Metairie	70002			0	0	2	2	100.0%
West Metairie	70003			1	2	2	1	50.0%
Old Metairie-Bucktown	70005			0	1	0	0	0.0%
Metairie Clearview N of I-10	70006			0	1	0	0	0.0%
Belle Chasse	70037						0	0.0%
Chalmette	70043			1	1	0	-1	0.0%
Destrehan	70047						0	0.0%
Gretna	70053			1	0	0	-1	0.0%
Gretna/S of Whitney	70056						0	0.0%
Harvey	70058						0	0.0%
South Kenner	70062			1	1	0	-1	0.0%
North Kenner	70065			6	1	2	-4	-200.0%
LaPlace	70068			0	1	1	1	100.0%
Marrero	70072			0	2	2	2	100.0%
Westwego	70094			0	1	0	0	0.0%
Algiers	70114						0	0.0%
Uptown	70115						0	0.0%
French Quarter-Marigny	70116						0	0.0%
Bywater/ Lower 9th Ward	70117			2	1	1	-1	-100.0%
Carrollton/Riverbend	70118						0	0.0%
Mid City	70119			1	0	0	-1	0.0%
N.O. Postal Box Zone	70121			0	0	1	1	100.0%
Lakefront/Gentilly	70122			2	2	2	0	0.0%
Harahan-Jefferson	70123			0	1	1	1	100.0%
Lakefront/Lakeview	70124						0	0.0%
Broadmoor	70125						0	0.0%
N.O. East Crowder	70126			0	1	1	1	100.0%
N.O. East Crowder to Wright Rd	70127			1	2	1	0	0.0%
N.O. East Wright Rd to I-510	70128			0	1	0	0	0.0%
N.O. East Past I-510	70129			2	2	4	2	50.0%
N.O. CBD Lower Garden District	70130			0	0	1	1	100.0%
Lower Coast Algiers	70131			0	0	1	1	100.0%
St. Tammany	70420			19	40	36	17	47.2%
Washington	70427			11	21	27	16	59.3%
Covington	70433			55	97	112	57	50.9%
Covington	70435			28	31	48	20	41.7%
St. Tammany	70445			42	61	57	15	26.3%
St. Tammany	70448			31	23	56	25	44.6%
St. Tammany	70452			59	69	72	13	18.1%
Slidell	70458			252	296	282	30	10.6%
Slidell	70460			162	201	199	37	18.6%
Slidell	70461			160	188	230	70	30.4%
St. Tammany	70471			25	47	70	45	64.3%
Subtotal				862	1,095	1,211	349	28.8%
Other Louisiana				102	211	248	146	58.9%
Total Louisiana				964	1,306	1,459	495	33.9%
Out-of-State/Unknown				14	11	6	-8	-133.3%
Total				978	1,317	1,465	487	33.2%