

# Delgado

COMMUNITY COLLEGE

## 5 Year Analysis Final Report

Fall 2000-2004



Published on February 18, 2005

By The Office of Institutional Research

## **Table of Contents**

**page no.**

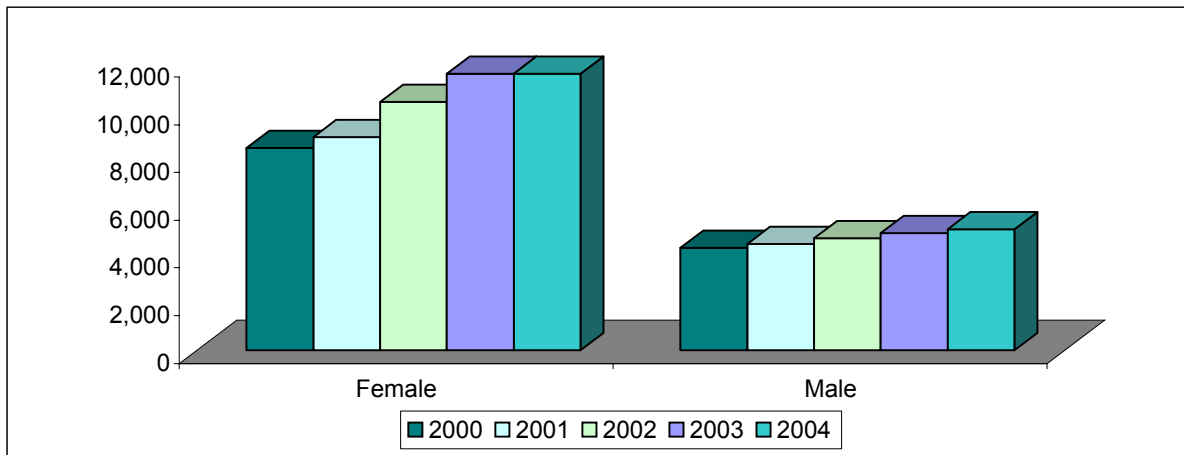
Summary	
Enrollment by Gender	1
Enrollment by Ethnicity	1
Enrollment by Age	4
Enrollment by Admission Status	6
Enrollment by Classification	6
Full-time/Part-time Status, Headcount, FTE, SCH	9
Enrollment by Award Sought	11
Enrollment by Division	12
Enrollment by Program	13
Enrollment by Program Ranked by Student Total	21
Enrollment by Parish	23
Top 50 "Feeder" High Schools of First Time Freshmen	25
Enrollment by Zip Code	27

## SUMMARY

- ✓ Enrollment increased 23.3% from Fall 2000 (12,784) to Fall 2004 (16,669).
- ✓ Enrollment for Fall 2004 is our highest enrollment ever, although only a 1% increase over Fall 2003.
- ✓ Female students increased by 26.9% over the 5 years; male students increased by only 15.2%.  
Our female student enrollment is now 70% of the total.
- ✓ African American enrollment increased by 28.4% over the 5 years. Hispanic enrollment decreased by 5.5%. Caucasian enrollment increased by 11.1%.
- ✓ Charity Campus had the largest increase overall with 46% gain in enrollment. West Bank campus continues to be a fast growing campus with a 27.6% increase over 5 years.
- ✓ Enrollment at the Northshore site increased 16.3%, and City Park campus by 10.5%.
- ✓ Transfer students increases by 28.6%; continuing students increased by 26.5%. First-time freshman increased 13%.
- ✓ Nursing and Pre-Nursing had the largest number increase (2,068) over the 5 years.
- ✓ Legal Secretary, Horticulture, Practical Nursing, Pharmacy Technician, Nuclear Medicine, Diagnostic Medical Sonography had significant increases in program enrollment since 2000.
- ✓ Computer Network Technology, Computer Information Technology, Fire Protection Technology, Occupational Therapy Assistant, and Physical Therapy Assisting had significant decreases in program enrollment.

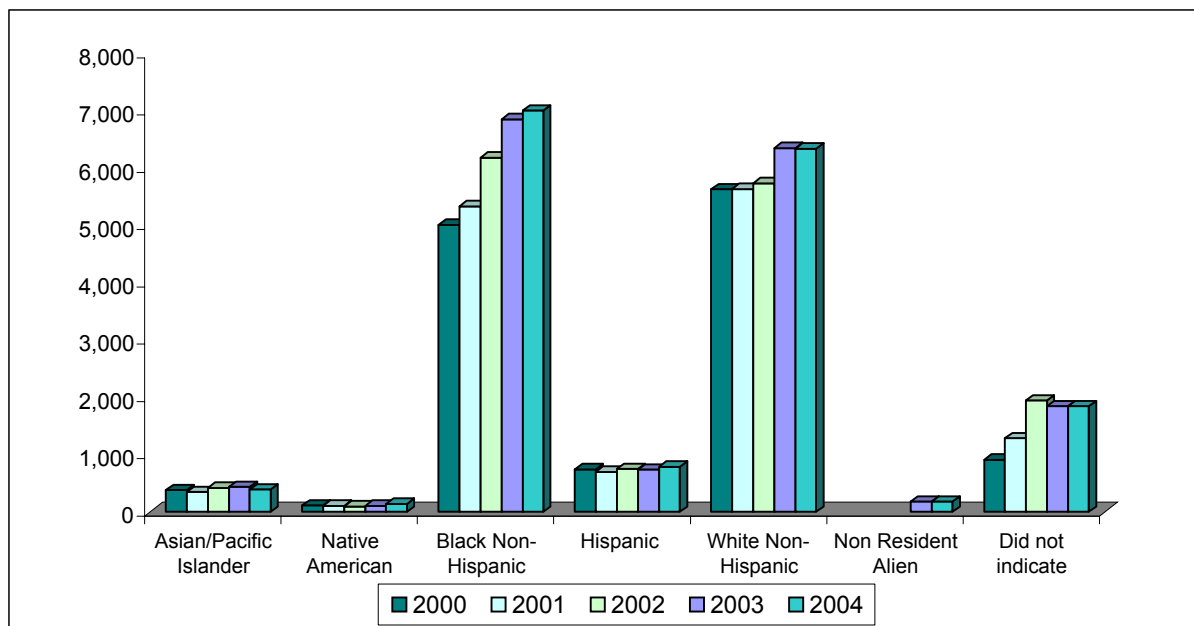
### Fall Enrollment History 2000-2004 by Gender

College Wide						Number Change 2000 to 2004	% Change 2000 to 2004
Gender	2000	2001	2002	2003	2004		
Female	8,476	8,939	10,416	11,591	11,591	3,115	26.9%
Male	4,308	4,465	4,705	4,909	5,078	770	15.2%
<b>Total</b>	<b>12,784</b>	<b>13,404</b>	<b>15,121</b>	<b>16,500</b>	<b>16,669</b>	<b>3,885</b>	<b>23.3%</b>



### Fall Enrollment History 2000-2004 by Ethnicity

College Wide						Number Change 2000 to 2004	% Change 2000 to 2004
Ethnicity	2000	2001	2002	2003	2004		
Asian/Pacific Islander	377	343	418	432	389	12	3.1%
Native American	108	107	94	106	136	28	20.6%
Black Non-Hispanic	5,014	5,334	6,183	6,853	7,004	1,990	28.4%
Hispanic	742	700	746	737	785	43	5.5%
White Non-Hispanic	5,634	5,635	5,739	6,351	6,339	705	11.1%
Non Resident Alien				179	175	N/A	N/A
Did not indicate	909	1,285	1,941	1,842	1,841	932	50.6%
<b>Total</b>	<b>12,784</b>	<b>13,404</b>	<b>15,121</b>	<b>16,500</b>	<b>16,669</b>	<b>3,885</b>	<b>23.3%</b>



## Fall Enrollment History 2000-2004 by Gender by Campus

City Park Campus						Number Change 2000 to 2004	% Change 2000 to 2004
Gender	2000	2001	2002	2003	2004		
Female	6,509	6,888	7,928	7,754	7,578	1,069	14.1%
Male	3,676	3,810	3,979	3,801	3,804	128	3.4%
<b>Total</b>	<b>10,185</b>	<b>10,698</b>	<b>11,907</b>	<b>11,555</b>	<b>11,382</b>	<b>1,197</b>	<b>10.5%</b>

West Bank Campus						Number Change 2000 to 2004	% Change 2000 to 2004
Gender	2000	2001	2002	2003	2004		
Female	1,583	1,625	1,971	2,265	2,203	620	28.1%
Male	552	571	662	721	746	194	26.0%
<b>Total</b>	<b>2,135</b>	<b>2,196</b>	<b>2,633</b>	<b>2,986</b>	<b>2,949</b>	<b>814</b>	<b>27.6%</b>

Charity School of Nursing						Number Change 2000 to 2004	% Change 2000 to 2004
Gender	2000	2001	2002	2003	2004		
Female	384	426	517	647	754	370	49.1%
Male	80	84	64	75	106	26	24.5%
<b>Total</b>	<b>464</b>	<b>510</b>	<b>581</b>	<b>722</b>	<b>860</b>	<b>396</b>	<b>46.0%</b>

Northshore Site						Number Change 2003 to 2004	% Change 2003 to 2004
Gender	2000	2001	2002	2003	2004		
Female				925	1,056	131	12.4%
Male				312	422	110	26.1%
<b>Total</b>				<b>1,237</b>	<b>1,478</b>	<b>241</b>	<b>16.3%</b>

## Fall Enrollment History 2000-2004 by Ethnicity by Campus

City Park Campus						Number Change 2000 to 2004	% Change 2000 to 2004
	2000	2001	2002	2003	2004		
Asian/Pacific Islander	321	295	345	344	293	-28	-9.6%
Native American	80	72	48	50	74	-6	-8.1%
Black Non-Hispanic	4042	4,265	4,948	5,149	5,131	1,089	21.2%
Hispanic	620	588	627	556	568	-52	-9.2%
White Non-Hispanic	4397	4,389	4,497	4,222	3,965	-432	-10.9%
Non Resident Alien				172	167	N/A	N/A
Did not indicate	725	1,089	1,442	1,062	1,184	459	38.8%
<b>Total</b>	<b>10,185</b>	<b>10,698</b>	<b>11,907</b>	<b>11,555</b>	<b>11,382</b>	<b>1,197</b>	<b>10.5%</b>

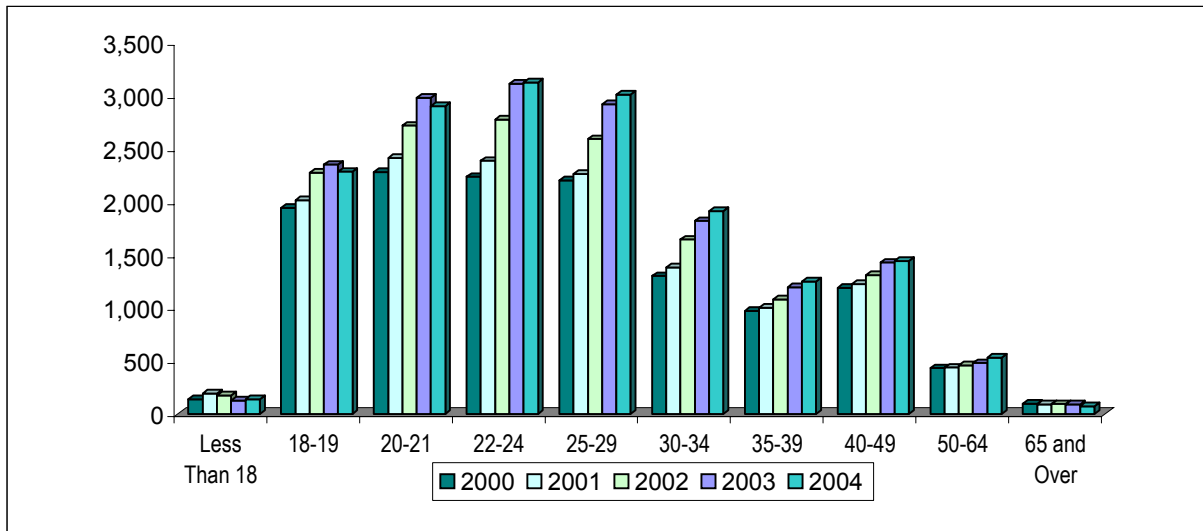
West Bank Campus						Number Change 2000 to 2004	% Change 2000 to 2004
	2000	2001	2002	2003	2004		
Asian/Pacific Islander	49	42	63	69	75	26	34.7%
Native American	22	31	42	36	38	16	42.1%
Black Non-Hispanic	859	931	1,096	1,374	1,409	550	39.0%
Hispanic	99	92	103	122	142	43	30.3%
White Non-Hispanic	936	922	881	945	934	-2	-0.2%
Non Resident Alien				3	4	N/A	N/A
Did not indicate	170	178	448	437	347	177	51.0%
<b>Total</b>	<b>2,135</b>	<b>2,196</b>	<b>2,633</b>	<b>2,986</b>	<b>2,949</b>	<b>814</b>	<b>27.6%</b>

Charity School of Nursing						Number Change 2000 to 2004	% Change 2000 to 2004
	2000	2001	2002	2003	2004		
Asian/Pacific Islander	7	6	10	14	15	8	53.3%
Native American	6	4	4	9	8	2	25.0%
Black Non-Hispanic	113	138	139	175	233	120	51.5%
Hispanic	23	20	16	29	37	14	37.8%
White Non-Hispanic	301	324	361	397	457	156	34.1%
Non Resident Alien				3	4	N/A	N/A
Did not indicate	14	18	51	95	106	92	86.8%
<b>Total</b>	<b>464</b>	<b>510</b>	<b>581</b>	<b>722</b>	<b>860</b>	<b>396</b>	<b>46.0%</b>

Northshore Site						Number Change 2003 to 2004	% Change 2003 to 2004
	2000	2001	2002	2003	2004		
Asian/Pacific Islander				5	6	1	16.7%
Native American				11	16	5	31.3%
Black Non-Hispanic				155	231	76	32.9%
Hispanic				30	38	8	21.1%
White Non-Hispanic				787	983	196	19.9%
Non Resident Alien				1	0	N/A	N/A
Did not indicate				248	204	-44	-21.6%
<b>Total</b>				<b>1,237</b>	<b>1,478</b>	<b>241</b>	<b>16.3%</b>

### Fall Enrollment History 2000-2004 by Age

						Number Change	% Change
College Wide						2000	2000
	2000	2001	2002	2003	2004	to 2004	to 2004
Less Than 18	136	193	175	126	136	0	0.0%
18-19	1,944	2,014	2,274	2,351	2,284	340	14.9%
20-21	2,283	2,415	2,719	2,980	2,902	619	21.3%
22-24	2,236	2,387	2,778	3,113	3,125	889	28.4%
25-29	2,201	2,262	2,593	2,920	3,013	812	26.9%
30-34	1,300	1,381	1,644	1,820	1,914	614	32.1%
35-39	970	1,000	1,080	1,193	1,250	280	22.4%
40-49	1,189	1,227	1,307	1,427	1,443	254	17.6%
50-64	431	437	459	479	530	99	18.7%
65 and Over	94	88	92	91	72	-22	-30.6%
<b>Total</b>	<b>12,784</b>	<b>13,404</b>	<b>15,121</b>	<b>16,500</b>	<b>16,669</b>	<b>3,885</b>	<b>23.3%</b>
Average Age	28	28	28	28	28	0	0.0%



### Fall Enrollment History 2000-2004 by Age by Campus

						Number Change	% Change
City Park Campus						2000	2000
	2000	2001	2002	2003	2004	to 2004	to 2004
Less Than 18	108	144	139	71	81	-27	-33.3%
18-19	1,573	1,609	1,826	1,653	1,624	51	3.1%
20-21	1,848	1,981	2,156	2,193	2,055	207	10.1%
22-24	1,792	1,878	2,190	2,240	2,188	396	18.1%
25-29	1,729	1,793	1,995	2,045	2,057	328	15.9%
30-34	1,034	1,103	1,276	1,211	1,234	200	16.2%
35-39	751	786	833	791	803	52	6.5%
40-49	930	966	1,049	956	924	-6	-0.6%
50-64	353	376	372	337	367	14	3.8%
65 and Over	67	62	71	58	49	-18	-36.7%
<b>Total</b>	<b>10,185</b>	<b>10,698</b>	<b>11,907</b>	<b>11,555</b>	<b>11,382</b>	<b>1,197</b>	<b>10.5%</b>

### Fall Enrollment History 2000-2004 by Age by Campus (cont.)

West Bank Campus						Number Change 2000 to 2004	% Change 2000 to 2004
	2000	2001	2002	2003	2004		
Less Than 18	28	48	36	42	32	4	12.5%
18-19	371	401	442	490	420	49	11.7%
20-21	403	391	516	543	533	130	24.4%
22-24	350	401	458	525	527	177	33.6%
25-29	321	314	423	481	474	153	32.3%
30-34	185	183	256	306	330	145	43.9%
35-39	164	168	203	236	237	73	30.8%
40-49	214	205	199	255	276	62	22.5%
50-64	73	59	79	83	100	27	27.0%
65 and Over	26	26	21	25	20	-6	-30.0%
<b>Total</b>	<b>2,135</b>	<b>2,196</b>	<b>2,633</b>	<b>2,986</b>	<b>2,949</b>	<b>814</b>	<b>27.6%</b>

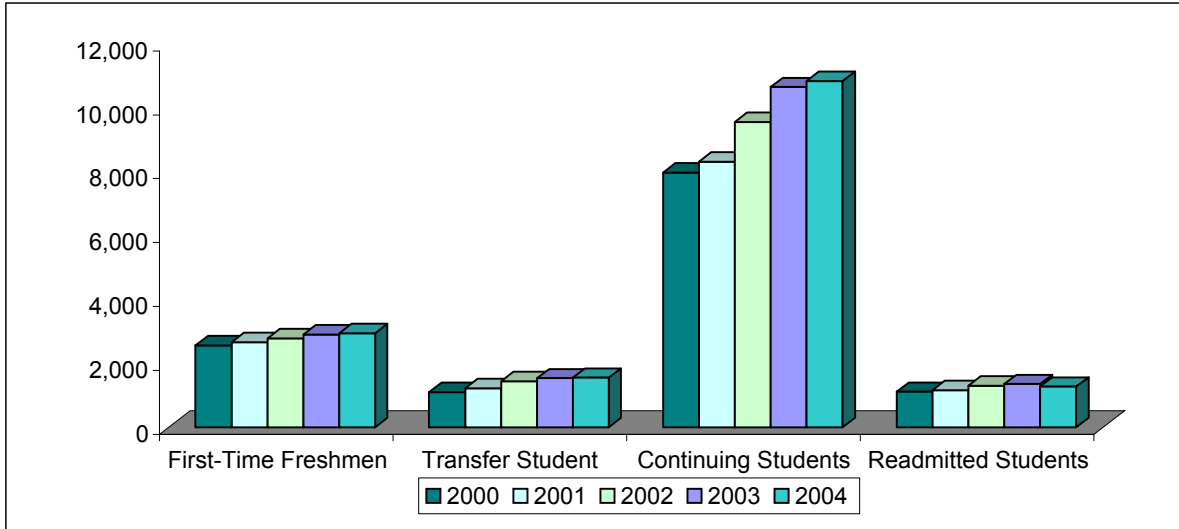
Charity School of Nursing						Number Change 2000 to 2004	% Change 2000 to 2004
	2000	2001	2002	2003	2004		
Less Than 18	0	1	0	0	1	1	100.0%
18-19	0	4	6	4	3	3	100.0%
20-21	32	43	47	47	50	18	36.0%
22-24	94	108	130	154	175	81	46.3%
25-29	151	155	175	216	238	87	36.6%
30-34	81	95	112	143	181	100	55.2%
35-39	55	46	44	72	103	48	46.6%
40-49	45	56	59	67	88	43	48.9%
50-64	5	2	8	19	21	16	76.2%
65 and Over	1	0	0	0	0	-1	-100.0%
<b>Total</b>	<b>464</b>	<b>510</b>	<b>581</b>	<b>722</b>	<b>860</b>	<b>396</b>	<b>46.0%</b>

Northshore Site						Number Change 2003 to 2004	% Change 2003 to 2004
	2000	2001	2002	2003	2004		
Less Than 18				13	22	9	40.9%
18-19				204	237	33	13.9%
20-21				197	264	67	25.4%
22-24				194	235	41	17.4%
25-29				178	244	66	27.0%
30-34				160	169	9	5.3%
35-39				94	107	13	12.1%
40-49				149	155	6	3.9%
50-64				40	42	2	4.8%
65 and Over				8	3	-5	-166.7%
<b>Total</b>				<b>1,237</b>	<b>1,478</b>	<b>241</b>	<b>16.3%</b>



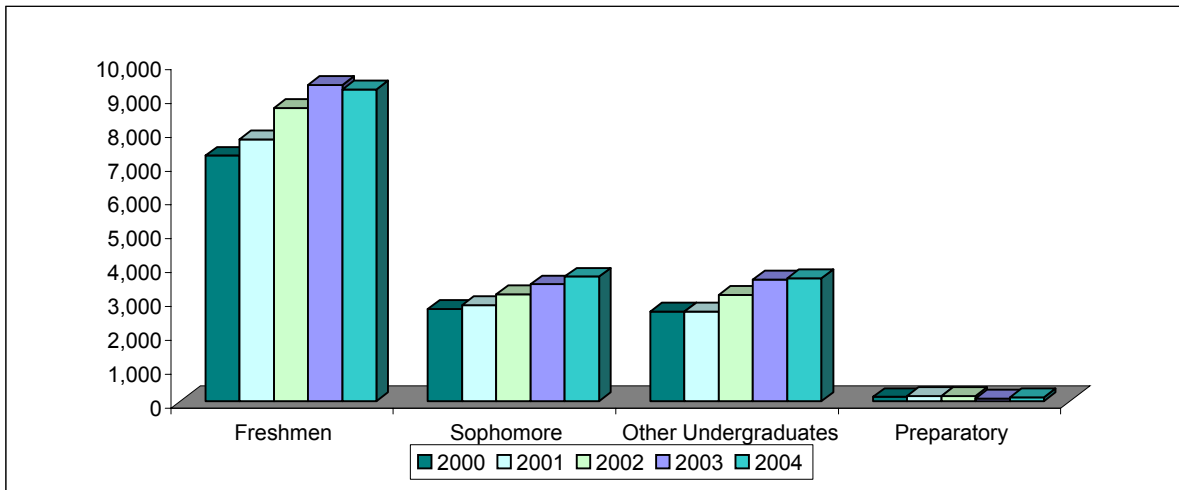
## Fall Enrollment History 2000-2004 by Admission Status

College Wide						Number Change 2000 to 2004	% Change 2000 to 2004
	2000	2001	2002	2003	2004		
First-Time Freshmen	2,560	2,661	2,784	2,902	2,941	381	13.0%
Transfer Student	1,104	1,222	1,438	1,526	1,547	443	28.6%
Continuing Students	7,973	8,319	9,556	10,653	10,842	2,869	26.5%
Readmitted Students	1,107	1,157	1,296	1,346	1,274	167	13.1%
Exchange Students	40	45	47	72	65	25	38.5%
Other Students				1	0	N/A	N/A
<b>Total</b>	<b>12,784</b>	<b>13,404</b>	<b>15,121</b>	<b>16,500</b>	<b>16,669</b>	<b>3,885</b>	<b>23.3%</b>



## Fall Enrollment History 2000-2004 by Classification

College Wide						Number Change 2000 to 2004	% Change 2000 to 2004
	2000	2001	2002	2003	2004		
Freshmen	7,262	7,748	8,665	9,357	9,219	1,957	21.2%
Sophomore	2,735	2,847	3,166	3,457	3,686	951	25.8%
Other Undergraduates	2,659	2,657	3,140	3,604	3,640	981	27.0%
Preparatory	128	152	150	82	124	-4	-3.2%
<b>Total</b>	<b>12,784</b>	<b>13,404</b>	<b>15,121</b>	<b>16,500</b>	<b>16,669</b>	<b>3,885</b>	<b>23.3%</b>



## Fall Enrollment History 2000-2004 by Admission Status by Campus

City Park Campus						Number Change 2000 to 2004	% Change 2000 to 2004
	2000	2001	2002	2003	2004		
First-Time Freshmen	2,106	2,205	2,256	1,964	1,990	-116	-5.8%
Transfer Student	916	1,023	1,216	1,142	1,122	206	18.4%
Continuing Students	6,277	6,498	7,377	7,449	7,255	978	13.5%
Readmitted Students	855	931	1,015	940	859	4	0.5%
Exchange Students	31	41	43	60	56	25	44.6%
Other Students				0	0	N/A	N/A
<b>Total</b>	<b>10,185</b>	<b>10,698</b>	<b>11,907</b>	<b>11,555</b>	<b>11,282</b>	<b>1,097</b>	<b>9.7%</b>

West Bank Campus						Number Change 2000 to 2004	% Change 2000 to 2004
	2000	2001	2002	2003	2004		
First-Time Freshmen	454	440	526	568	536	82	15.3%
Transfer Student	174	184	212	205	243	69	28.4%
Continuing Students	1,266	1,364	1,653	1,931	1,912	646	33.8%
Readmitted Students	232	204	238	271	250	18	7.2%
Exchange Students	9	4	4	10	8	-1	-12.5%
Other Students				1	0	N/A	N/A
<b>Total</b>	<b>2,135</b>	<b>2,196</b>	<b>2,633</b>	<b>2,986</b>	<b>2,949</b>	<b>814</b>	<b>27.6%</b>

Charity School of Nursing						Number Change 2000 to 2004	% Change 2000 to 2004
	2000	2001	2002	2003	2004		
First-Time Freshmen	0	16	2	11	8	8	100.0%
Transfer Student	14	15	10	19	14	0	0.0%
Continuing Students	430	457	526	646	784	354	45.2%
Readmitted Students	20	22	43	46	54	34	63.0%
Exchange Students	0	0	0	0	0	0	0.0%
Other Students				0	0	N/A	N/A
<b>Total</b>	<b>464</b>	<b>510</b>	<b>581</b>	<b>722</b>	<b>860</b>	<b>396</b>	<b>46.0%</b>

Northshore Site						Number Change 2003 to 2004	% Change 2003 to 2004
	2000	2001	2002	2003	2004		
First-Time Freshmen				359	407	48	11.8%
Transfer Student				160	168	8	4.8%
Continuing Students				627	791	164	20.7%
Readmitted Students				89	111	22	19.8%
Exchange Students				2	1	-1	-100.0%
Other Students				0	0	0	0.0%
<b>Total</b>				<b>1,237</b>	<b>1,478</b>	<b>241</b>	<b>16.3%</b>

## Fall Enrollment History 2000-2004 by Classification by Campus

City Park Campus						Number Change 2000 to 2004	% Change 2000 to 2004
	2000	2001	2002	2003	2004		
Freshmen	5,901	6,295	6,979	6,526	6,442	541	8.4%
Sophomore	2,201	2,272	2,455	2,447	2,519	318	12.6%
Other Undergraduates	1,958	1,982	2,324	2,508	2,335	377	16.1%
Preparatory	125	149	149	74	86	-39	-45.3%
<b>Total</b>	<b>10,185</b>	<b>10,698</b>	<b>11,907</b>	<b>11,555</b>	<b>11,382</b>	<b>1,197</b>	<b>10.5%</b>

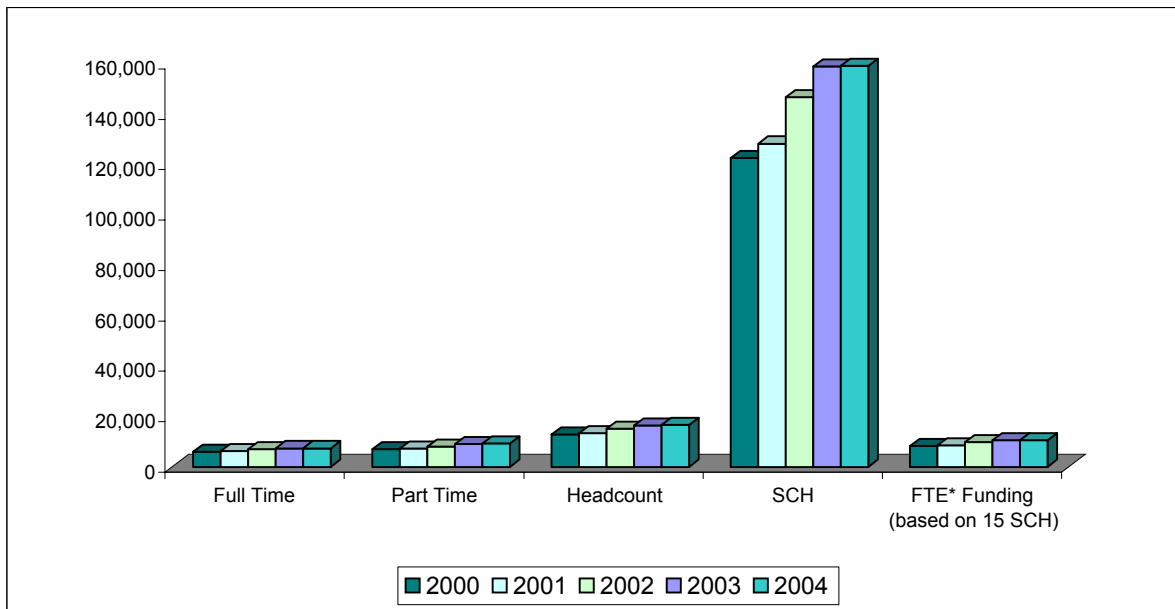
West Bank Campus						Number Change 2000 to 2004	% Change 2000 to 2004
	2000	2001	2002	2003	2004		
Freshmen	1,350	1,420	1,642	1,897	1,719	369	21.5%
Sophomore	462	492	604	663	754	292	38.7%
Other Undergraduates	320	281	387	426	457	137	30.0%
Preparatory	3	3	0	0	19	16	84.2%
<b>Total</b>	<b>2,135</b>	<b>2,196</b>	<b>2,633</b>	<b>2,986</b>	<b>2,949</b>	<b>814</b>	<b>27.6%</b>

Charity School of Nursing						Number Change 2000 to 2004	% Change 2000 to 2004
	2000	2001	2002	2003	2004		
Freshmen	11	33	44	32	15	4	26.7%
Sophomore	72	83	107	112	133	61	45.9%
Other Undergraduates	381	394	429	578	711	330	46.4%
Preparatory	0	0	1	0	1	1	100.0%
<b>Total</b>	<b>464</b>	<b>510</b>	<b>581</b>	<b>722</b>	<b>860</b>	<b>396</b>	<b>46.0%</b>

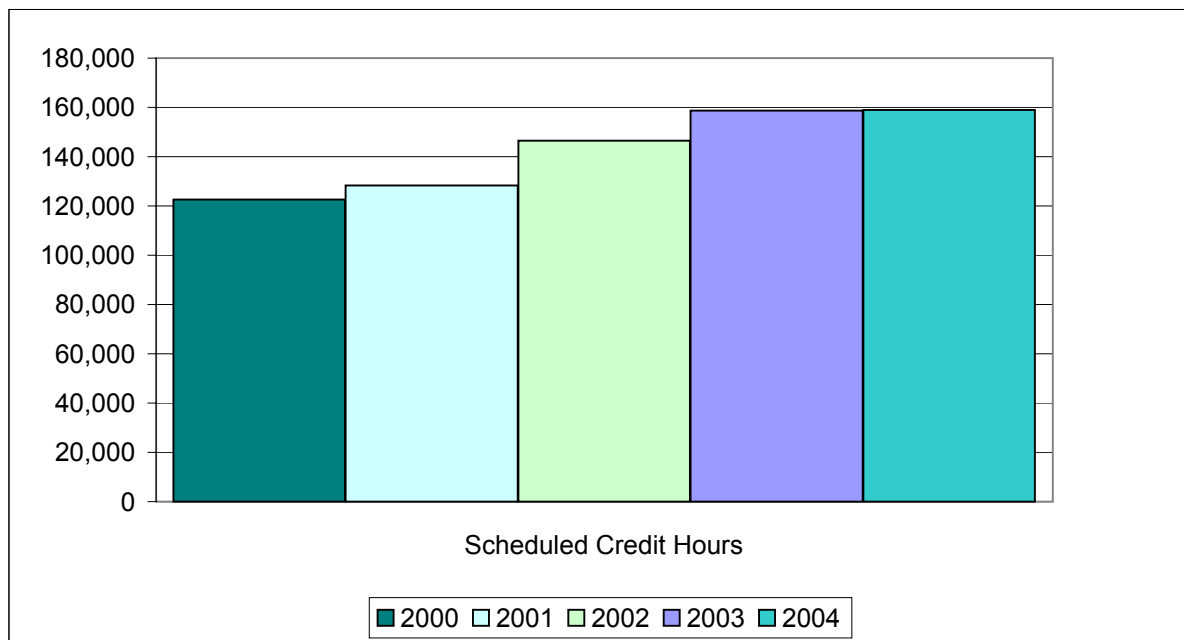
Northshore Site						Number Change 2003 to 2004	% Change 2003 to 2004
	2000	2001	2002	2003	2004		
Freshmen				902	1,043	141	13.5%
Sophomore				235	280	45	16.1%
Other Undergraduates				92	137	45	32.8%
Preparatory				8	18	10	55.6%
<b>Total</b>				<b>1,237</b>	<b>1,478</b>	<b>241</b>	<b>16.3%</b>

## Fall Enrollment History 2000-2004 by Full/Part Time Status, Headcount, FTE, SCH

College Wide						Number Change 2000 to 2004	% Change 2000 to 2004
	2000	2001	2002	2003	2004		
Full Time	5,884	6,216	7,039	7,369	7,380	1,496	20.3%
Part Time	6,900	7,188	8,082	9,131	9,289	2,389	25.7%
Headcount	12,784	13,404	15,121	16,500	16,669	3,885	23.3%
SCH	122,537	128,263	146,570	158,745	158,995	36,458	22.9%
FTE* Funding (based on 15 SCH)	8,169	8,551	9,771	10,583	10,600	2,431	22.9%
FTE Other (based on 12 SCH)	10,211	10,689	12,214	13,229	13,250	3,038	22.9%



\* FTE is calculated by dividing schedule credit hours by 15.



**Fall Enrollment History 2000-2004  
by Full/Part Time Status, Headcount, FTE, SCH by Campus**

						<b>Number Change</b>	<b>% Change</b>
<b>City Park Campus</b>						<b>2000 to 2004</b>	<b>2000 to 2004</b>
	<b>2000</b>	<b>2001</b>	<b>2002</b>	<b>2003</b>	<b>2004</b>		
Full Time	4,843	5,136	5,652	5,344	5,261	418	7.9%
Part Time	5,342	5,562	6,255	6,211	6,121	779	12.7%
Headcount	10,185	10,698	11,907	11,555	11,382	1,197	10.5%
SCH	98,598	103,273	115,865	112,408	109,772	2,636	2.3%
FTE* Funding (based on 15 SCH)	6,573	6,885	7,724	7,494	7,318	176	2.3%
FTE Other (based on 12 SCH)	8,217	8,606	9,655	9,367	9,148	931	10.2%

						<b>Number Change</b>	<b>% Change</b>
<b>West Bank Campus</b>						<b>2000 to 2004</b>	<b>2000 to 2004</b>
	<b>2000</b>	<b>2001</b>	<b>2002</b>	<b>2003</b>	<b>2004</b>		
Full Time	908	931	1,211	1,277	1,275	367	28.8%
Part Time	1,227	1,265	1,422	1,709	1,674	447	26.7%
Headcount	2,135	2,196	2,633	2,986	2,949	814	27.6%
SCH	19,207	19,793	24,755	27,728	27,313	8,106	29.7%
FTE* Funding (based on 15 SCH)	1,280	1,319	1,650	1,849	1,821	541	29.7%
FTE Other (based on 12 SCH)	1,601	1,649	2,063	2,311	2,276	676	29.7%

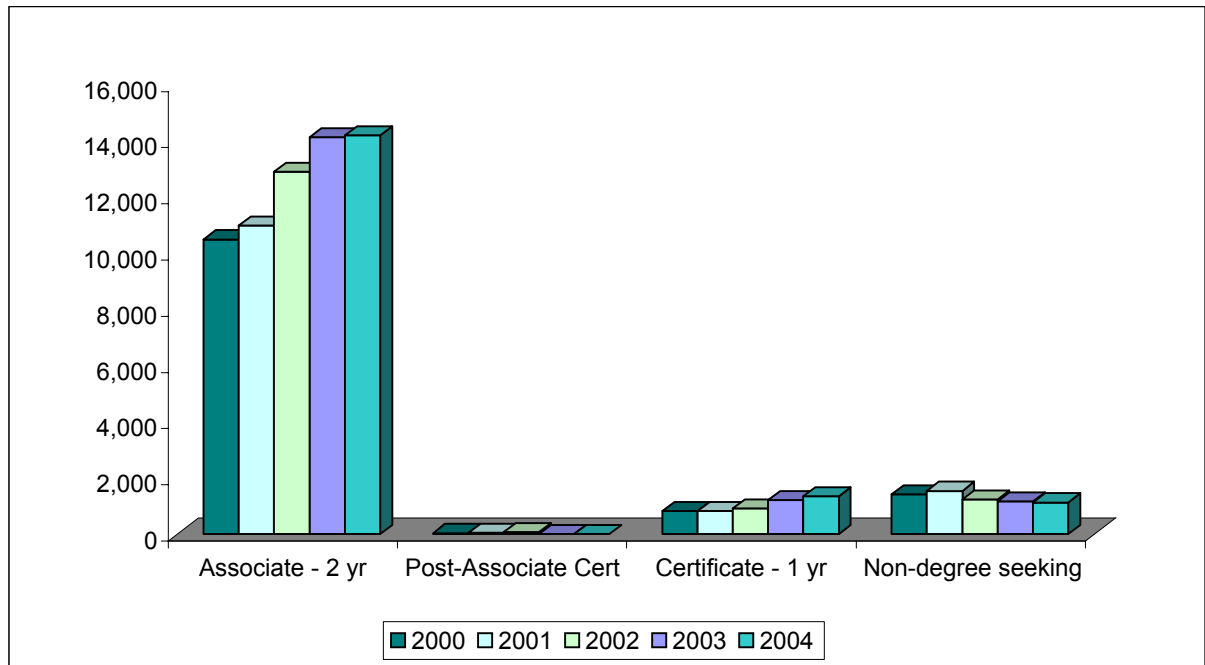
						<b>Number Change</b>	<b>% Change</b>
<b>Charity School of Nursing</b>						<b>2000 to 2004</b>	<b>2000 to 2004</b>
	<b>2000</b>	<b>2001</b>	<b>2002</b>	<b>2003</b>	<b>2004</b>		
Full Time	133	149	176	233	279	146	52.3%
Part Time	331	361	405	489	581	250	43.0%
Headcount	464	510	581	722	860	396	46.0%
SCH	4,732	5,197	5,950	7,468	8,939	4,207	47.1%
FTE* Funding (based on 15 SCH)	315	346	397	498	596	281	47.1%
FTE Other (based on 12 SCH)	394	433	496	622	745	351	47.1%

						<b>Number Change</b>	<b>% Change</b>
<b>Northshore Site</b>						<b>2003 to 2004</b>	<b>2003 to 2004</b>
	<b>2000</b>	<b>2001</b>	<b>2002</b>	<b>2003</b>	<b>2004</b>		
Full Time				515	565	50	8.8%
Part Time				722	913	191	20.9%
Headcount				1,237	1,478	241	16.3%
SCH				11,141	12,971	1,830	14.1%
FTE* Funding (based on 15 SCH)				743	865	122	14.1%
FTE Other (based on 12 SCH)				928	1,081	1,081	100.0%

\* FTE is calculated by dividing schedule credit hours by 15.

## Fall Enrollment History 2000-2004 by Award Sought

College Wide						Number Change 2000 to 2004	% Change 2000 to 2004
	2000	2001	2002	2003	2004		
Associate - 2 yr	10,497	10,986	12,904	14,125	14,196	3,699	26.1%
Post-Associate Cert	41	53	72	0	0	-41	0.0%
Certificate - 1 yr	832	824	908	1,216	1,342	510	38.0%
Non-degree seeking	1,414	1,541	1,237	1,159	1,131	-283	-25.0%
<b>Total</b>	<b>12,784</b>	<b>13,404</b>	<b>15,121</b>	<b>16,500</b>	<b>16,669</b>	<b>3,885</b>	<b>23.3%</b>



## Fall Enrollment History 2000-2004 by Award Sought by Campus

City Park Campus						Number Change 2000 to 2004	% Change 2000 to 2004
	2000	2001	2002	2003	2004		
Associate - 2 yr	8,190	8,583	10,000	9,742	9,480	1,290	13.6%
Post-Associate Cert	36	46	68	0	0	-36	N/A
Certificate - 1 yr	717	708	760	877	970	253	26.1%
Non-degree seeking	1,242	1,361	1,079	936	932	-310	-33.3%
<b>Total</b>	<b>10,185</b>	<b>10,698</b>	<b>11,907</b>	<b>11,555</b>	<b>11,382</b>	<b>1,197</b>	<b>10.5%</b>

West Bank Campus						Number Change 2000 to 2004	% Change 2000 to 2004
	2000	2001	2002	2003	2004		
Associate - 2 yr	1,870	1,944	2,403	2,655	2,609	739	28.3%
Post-Associate Cert	5	7	4	0	0	-5	N/A
Certificate - 1 yr	88	89	109	191	201	113	56.2%
Non-degree seeking	172	156	117	140	139	-33	-23.7%
<b>Total</b>	<b>2,135</b>	<b>2,196</b>	<b>2,633</b>	<b>2,986</b>	<b>2,949</b>	<b>814</b>	<b>27.6%</b>

### Fall Enrollment History 2000-2004 by Award Sought by Campus (cont.)

						Number Change 2000 to 2004	% Change 2000 to 2004
Charity School of Nursing							
	2000	2001	2002	2003	2004		
Associate - 2 yr	437	459	501	646	785	348	44.3%
Post-Associate Cert	0	0	0	0	0	0	N/A
Certificate - 1 yr	27	27	39	69	75	48	64.0%
Non-degree seeking	0	24	41	7	0	0	0.0%
<b>Total</b>	<b>464</b>	<b>510</b>	<b>581</b>	<b>722</b>	<b>860</b>	<b>396</b>	<b>46.0%</b>

						Number Change 2003 to 2004	% Change 2003 to 2004
Northshore Site							
	2000	2001	2002	2003	2004		
Associate - 2 yr				1,082	1,322	240	18.2%
Post-Associate Cert				0	0	0	0.0%
Certificate - 1 yr				79	96	17	17.7%
Non-degree seeking				76	60	-16	-26.7%
<b>Total</b>				<b>1,237</b>	<b>1,478</b>	<b>241</b>	<b>16.3%</b>

### Fall Enrollment History 2000-2004 by Division\*

						Number Change 2000 to 2004	% Change 2000 to 2004
	2000	2001	2002	2003	2004		
<b>City Park Campus</b>							
Liberal Arts	2,484	2,820	2,568	2,771	2,544	60	2.4%
Allied Health	1,315	1,566	1,667	2,073	1,916	601	31.4%
Basic Education-CPC*	2,122	1,315	2,664	1,796	2,477	355	14.3%
Business and Technology	2,244	2,546	2,393	2,652	2,500	256	10.2%
Science & Math	980	1,350	1,522	2,066	1,913	933	48.8%
Workforce Development	1,040	1,101	1,093	197	32	-1,008	-3150.0%
<b>Campus Total</b>	<b>10,185</b>	<b>10,698</b>	<b>11,907</b>	<b>11,555</b>	<b>11,382</b>	<b>1,197</b>	<b>10.5%</b>
<b>West Bank Campus</b>							
Liberal Arts & Sciences	1,097	1,356	1,399	1,948	1,709	612	35.8%
Business, Technology & Math	459	512	511	582	451	-8	-1.8%
Basic Education-WBC	579	328	723	456	789	210	26.6%
<b>Campus Total</b>	<b>2,135</b>	<b>2,196</b>	<b>2,633</b>	<b>2,986</b>	<b>2,949</b>	<b>814</b>	<b>27.6%</b>
<b>Nursing</b>	<b>464</b>	<b>510</b>	<b>581</b>	<b>722</b>	<b>860</b>	<b>396</b>	<b>46.0%</b>
<b>Northshore Site</b>							
Covington ***				283	329	46	14.0%
Basic Education-Covington					409	N/A	N/A
Slidell***				954	740	-214	-28.9%
<b>Site Total</b>				<b>1,237</b>	<b>1,478</b>	<b>241</b>	<b>16.3%</b>
<b>College Total</b>	<b>13,824</b>	<b>14,505</b>	<b>16,214</b>	<b>16,500</b>	<b>16,669</b>	<b>2,845</b>	<b>17.1%</b>

## Fall Enrollment History 2000-2004 by Program

College Wide						Number Change 2000 to 2004	% Change 2000 to 2004
	2000	2001	2002	2003	2004		
Accounting	449	489	544	501	503	54	10.7%
Administrative Office Technology*	160	136	144	145	128	-32	-25.0%
Air Conditioning & Refrigeration	60	56	48	9	2	-58	-2900.0%
American Sign Language Studies	42	40	36	43	36	-6	-16.7%
Business Administration	849	897	1,044	1,024	1,106	257	23.2%
Business Training	45	47	22	6	3	-42	-1400.0%
CADD (Drafting-ITMF)	44	44	57	65	93	49	52.7%
Carpentry	21	18	26	20	8	-13	-162.5%
Certified Nurse Assistant	0	22	43	7	0	0	0.0%
CET-Architectural Technology	92	109	97	110	130	38	29.2%
CET-Civil Construction Technology	57	46	57	68	53	-4	-7.5%
CET-Construction Management	14	34	29	33	41	27	65.9%
Computer Information Technology	666	625	634	572	435	-231	-53.1%
Computer Network Technology	293	255	274	278	214	-79	-36.9%
Computer Repair	78	55	45	38	42	-36	-85.7%
Construction Management	16	13	13	17	22	6	27.3%
Criminal Justice	496	517	518	579	528	32	6.1%
Culinary Arts	198	190	192	219	224	26	11.6%
Dental Hygiene	81	61	39	22	6	-75	-1250.0%
Dental Laboratory Technology	18	19	21	24	21	3	14.3%
Diagnostic Medical Sonography	41	53	72	98	110	69	62.7%
Dietetic Technician	42	36	53	58	66	24	36.4%
Drafting (Certificate)	67	48	39	34	6	-61	-1016.7%
Early Childhood Education	775	680	722	814	846	71	8.4%
Educational Interpreting for the Deaf	84	61	75	63	50	-34	-68.0%
Electrical Construction Technician	40	36	16	6	22	-18	-81.8%
Electrical Electronics Engineering Technology	121	134	148	159	151	30	19.9%
Electronics Repair	29	17	16	11	8	-21	-262.5%
Emergency Medical Technology	102	92	110	102	182	80	44.0%
English as a Second Language	291	285	278	261	259	-32	-12.4%
EST-Biomedical Equip Repair Technology	33	26	43	52	61	28	45.9%
EST-Computer Repair Technology	36	36	59	41	49	13	26.5%
EST-Electronics Repair Technology	13	19	31	31	17	4	23.5%
Fine Arts	126	158	173	169	142	16	11.3%
Fire Protection Technology	264	320	162	145	124	-140	-112.9%
Food Service Careers	8	30	34	17	5	-3	-60.0%
Funeral Service Education	146	148	153	176	163	17	10.4%



### Fall Enrollment History 2000-2004 by Program (cont.)

College Wide						Number Change 2000 to 2004	% Change 2000 to 2004
	2000	2001	2002	2003	2004		
General Science	237	250	261	331	356	119	33.4%
General Studies	1,970	1,924	1,960	2,009	1,941	-29	-1.5%
Health Information Technology	134	154	186	196	161	27	16.8%
Horticulture	8	33	80	58	60	52	86.7%
Hospitality	108	96	100	83	89	-19	-21.3%
Interior Design	155	178	199	203	191	36	18.8%
Legal Secretary	4	28	53	90	76	72	94.7%
Machine Tool Technology	13	22	21	13	16	3	18.8%
Management	177	207	247	249	261	84	32.2%
Manufacturing	6	5	3	3	2	-4	-200.0%
Massage Therapy				7	25	25	100.0%
Medical Coding					38	38	100.0%
Medical Laboratory Technician	86	85	110	160	150	64	42.7%
Motor Vehicle Technology	124	132	126	175	266	142	53.4%
Music	89	102	126	135	137	48	35.0%
Nuclear Medicine Technology	17	16	23	36	44	27	61.4%
Nursing	437	460	501	646	785	348	44.3%
Occupational Therapy Assistant	81	74	50	52	70	-11	-15.7%
Ophthalmic Medical Assistant	28	15	18	16	10	-18	-180.0%
Pastry Assistant-Certificate					6	6	100.0%
Performance & Media Arts	143	171	181	196	207	64	30.9%
Pharmacy Technician	56	101	170	229	270	214	79.3%
Physical Therapist Assisting	282	274	345	302	307	25	8.1%
Practical Nursing	36	91	138	231	226	190	84.1%
Pre-Nursing	1,537	1,833	2,467	3,053	3,256	1,719	52.8%
Radiation Therapy-Certificate				3	9	9	100.0%
Radiologic Technology	518	671	1,038	1,359	1,223	705	57.6%
Respiratory Care Technology	163	171	161	173	169	6	3.6%
Safety & Health Technology	48	42	47	29	31	-17	-54.8%
Surgical Technology	206	212	239	237	252	46	18.3%
Visual Communications	201	197	201	209	179	-22	-12.3%
Welding Technology	22	8	3	0	0	-22	0.0%
Workforce	1	0	0	0	0	-1	0.0%
<b>Total</b>	<b>12,784</b>	<b>13,404</b>	<b>15,121</b>	<b>16,500</b>	<b>16,669</b>	<b>3,885</b>	<b>23.3%</b>

## Fall Enrollment History 2000-2004 by Campus

City Park Campus						Number Change 2000 to 2004	% Change 2000 to 2004
	2000	2001	2002	2003	2004		
Accounting	364	396	436	340	362	-2	-0.6%
Administrative Office Technology	127	102	104	98	92	-35	-38.0%
Air Conditioning & Refrigeration	60	55	47	9	2	-58	-2900.0%
American Sign Language Studies	40	38	34	30	30	-10	-33.3%
Business Administration	688	720	841	713	779	91	11.7%
Business Training	40	42	19	4	1	-39	-3900.0%
CADD (Drafting-ITMF)	29	36	46	50	69	40	58.0%
Carpentry	20	17	25	19	8	-12	0.0%
Certified Nurse Assistant	0	0	2	0	0	0	0.0%
CET-Architectural Technology	86	102	87	96	109	23	21.1%
CET-Civil Construction Technology	46	33	49	50	44	-2	-4.5%
CET-Construction Management	13	31	24	28	35	22	62.9%
Computer Information Technology	517	500	494	426	332	-185	-55.7%
Computer Network Technology	257	218	223	215	183	-74	-40.4%
Computer Repair	68	48	42	30	39	-29	-74.4%
Construction Management	14	11	11	10	21	7	33.3%
Criminal Justice	381	387	388	392	358	-23	-6.4%
Culinary Arts	192	179	182	202	203	11	5.4%
Dental Hygiene	58	45	24	8	3	-55	-1833.3%
Dental Laboratory Technology	14	16	21	17	14	0	0.0%
Diagnostic Medical Sonography	36	47	68	80	90	54	60.0%
Dietetic Technician	37	32	44	47	54	17	31.5%
Drafting (Certificate)	47	34	23	27	4	-43	-1075.0%
Early Childhood Education	573	515	553	524	543	-30	-5.5%
Educational Interpreting for the Deaf	65	52	64	53	39	-26	-66.7%
Electrical Construction Technician	35	33	15	5	21	-14	-66.7%
Electrical Electronics Engineering Technology	106	121	134	138	127	21	16.5%
Electronics Repair	28	11	12	10	8	-20	-250.0%
Emergency Medical Technology	94	86	102	86	153	59	38.6%
English as a Second Language	291	285	278	260	257	-34	-13.2%
EST-Biomedical Equip Repair Technology	31	23	42	49	55	24	43.6%
EST-Computer Repair Technology	30	31	53	32	36	6	16.7%
EST-Electronics Repair Technology	12	13	26	25	15	3	20.0%
Fine Arts	97	125	139	119	100	3	3.0%
Fire Protection Technology	261	316	160	135	78	-183	-234.6%
Food Service Careers	8	28	32	16	5	-3	-60.0%
Funeral Service Education	135	138	140	159	142	7	4.9%

City Park Campus, continued						Number Change 2000 to 2004	% Change 2000 to 2004
	2000	2001	2002	2003	2004		
General Science	198	200	214	259	251	53	21.1%
General Studies	1,458	1,446	1,455	1,325	1,328	-130	-9.8%
Health Information Technology	124	133	166	169	125	1	0.8%
Horticulture	8	30	78	55	57	49	86.0%
Hospitality	96	89	96	78	81	-15	-18.5%
Interior Design	143	166	186	184	167	24	14.4%
Legal Secretary	4	25	45	63	58	54	93.1%
Machine Tool Technology	12	19	19	12	16	4	25.0%
Management	155	177	203	172	183	28	15.3%
Manufacturing	6	6	4	3	2	-4	-200.0%
Massage Therapy				1	0	N/A	N/A
Medical Coding					35	N/A	N/A
Medical Laboratory Technician	75	74	98	133	111	36	32.4%
Motor Vehicle Technology	113	128	115	167	249	136	54.6%
Music	85	95	117	123	126	41	32.5%
Nuclear Medicine Technology	15	15	22	31	33	18	54.5%
Nursing	0	0	0	0	0	N/A	N/A
Occupational Therapy Assistant	68	68	42	37	55	-13	-23.6%
Ophthalmic Medical Assistant	24	12	15	13	9	-15	-166.7%
Pastry Assistant					6	N/A	N/A
Performance & Media Arts	133	155	167	159	172	39	22.7%
Pharmacy Technician	53	94	142	175	200	147	73.5%
Physical Therapist Assisting	241	222	281	230	230	-11	-4.8%
Practical Nursing	9	64	81	107	88	79	89.8%
Pre-Nursing	1,235	1,468	1,923	2,067	2,062	827	40.1%
Radiation Therapy-Certificate				3	9	N/A	100.0%
Radiologic Technology	472	600	891	977	826	354	42.9%
Respiratory Care Technology	137	148	132	137	126	-11	-8.7%
Safety & Health Technology	39	40	46	28	29	-10	-34.5%
Surgical Technology	189	190	215	178	186	-3	-1.6%
Visual Communications*	172	160	167	167	151	-21	-13.9%
Welding Technology	21	8	3	0	0	-21	0.0%
Workforce	0	0	0	0	0	0	0.0%
<b>Total</b>	<b>10,185</b>	<b>10,698</b>	<b>11,907</b>	<b>11,555</b>	<b>11,382</b>	<b>1,197</b>	<b>10.5%</b>

\*was Commercial Arts

<b>West Bank Campus</b>						<b>Number Change 2000 to 2004</b>	<b>% Change 2000 to 2004</b>
	<b>2000</b>	<b>2001</b>	<b>2002</b>	<b>2003</b>	<b>2004</b>		
Accounting	85	93	108	113	100	15	15.0%
Administrative Office Technology*	33	34	40	38	29	-4	-13.8%
Air Conditioning & Refrigeration	1	1	1	0	0	-1	0.0%
American Sign Language Studies	2	2	2	5	4	2	50.0%
Business Administration	161	177	203	217	224	63	28.1%
Business Training	5	5	3	1	1	-4	-400.0%
CADD (Drafting-ITMF)	15	8	11	11	18	3	0.0%
Carpentry	1	1	1	1	0	-1	0.0%
Certified Nurse Assistant	0	0	0	0	0	0	0.0%
CET-Architectural Technology	6	7	10	9	16	10	62.5%
CET-Civil Construction Technology	11	13	8	12	6	-5	-83.3%
CET-Construction Management	1	3	5	3	4	3	75.0%
Computer Information Technology	149	125	140	119	81	-68	-84.0%
Computer Network Technology	36	37	51	45	23	-13	-56.5%
Computer Repair	10	7	3	6	1	-9	-900.0%
Construction Management	2	2	2	5	1	-1	-100.0%
Criminal Justice	115	130	130	150	131	16	12.2%
Culinary Arts	6	11	10	15	13	7	53.8%
Dental Hygiene	23	16	15	14	3	-20	-666.7%
Dental Laboratory Technology	4	3	0	1	2	-2	-100.0%
Diagnostic Medical Sonography	5	6	4	12	9	4	44.4%
Dietetic Technician	5	4	9	6	7	2	28.6%
Drafting (Certificate)	20	14	16	7	2	-18	-900.0%
Early Childhood Education	202	165	169	226	222	20	9.0%
Educational Interpreting for the Deaf	19	9	11	6	7	-12	-171.4%
Electrical Construction Technician	5	3	1	1	1	-4	-400.0%
Electrical Electronics Engineering Technology	15	13	14	14	16	1	6.3%
Electronics Repair	1	6	4	1	0	-1	0.0%
Emergency Medical Technology	8	6	8	4	24	16	66.7%
English as a Second Language	0	0	0	0	1	1	100.0%
EST-Biomedical Equip Repair Technology	2	3	1	2	1	-1	-100.0%
EST-Computer Repair Technology	6	5	6	8	9	3	33.3%
EST-Electronics Repair Technology	1	6	5	5	2	1	50.0%
Fine Arts	29	33	34	43	40	11	27.5%
Fire Protection Technology	3	4	2	3	4	1	25.0%
Food Service Careers	0	2	2	1	0	0	0.0%
Funeral Service Education	11	10	13	13	16	5	31.3%

West Bank Campus, continued						Number Change 2000 to 2004	% Change 2000 to 2004
	2000	2001	2002	2003	2004		
General Science	39	50	47	54	71	32	45.1%
General Studies	512	478	505	507	420	-92	-21.9%
Health Information Technology	10	21	20	15	25	15	60.0%
Horticulture	0	3	2	2	2	2	100.0%
Hospitality	12	7	4	4	5	-7	-140.0%
Interior Design	12	12	13	11	16	4	25.0%
Legal Secretary	0	3	8	23	15	15	100.0%
Machine Tool Technology	1	2	1	1	0	-1	0.0%
Management	22	30	44	47	54	32	59.3%
Manufacturing	0	0	0	0	0	N/A	N/A
Massage Therapy				6	25	25	100.0%
Medical Coding					1	N/A	N/A
Medical Laboratory Technician	11	11	12	24	23	12	52.2%
Motor Vehicle Technology	11	4	11	7	14	3	21.4%
Music	4	7	9	7	10	6	60.0%
Nuclear Medicine Technology	2	0	1	2	6	4	66.7%
Nursing	0	0	0	0	0	N/A	N/A
Occupational Therapy Assistant	13	6	8	9	9	-4	-44.4%
Ophthalmic Medical Assistant	4	3	3	1	1	-3	-300.0%
Pastry Assistant					0	N/A	N/A
Performance & Media Arts	10	16	14	28	27	17	63.0%
Pharmacy Technician	3	7	28	37	55	52	94.5%
Physical Therapist Assisting	41	52	64	52	54	13	24.1%
Practical Nursing	0	0	18	46	36	36	100.0%
Pre-Nursing	302	365	544	676	764	462	60.5%
Radiologic Technology	46	71	147	218	209	163	78.0%
Radiation Therapy-Certificate				0	0	N/A	N/A
Respiratory Care Technology	26	23	29	27	29	3	10.3%
Safety & Health Technology	9	2	1	1	1	-8	-800.0%
Surgical Technology	17	22	24	33	38	21	55.3%
Visual Communications*	29	37	34	31	21	-8	-38.1%
Welding Technology	1	0	0	0	0	-1	0.0%
Workforce	0	0	0	0	0	0	0.0%
<b>Total</b>	<b>2,135</b>	<b>2,196</b>	<b>2,633</b>	<b>2,986</b>	<b>2,949</b>	<b>814</b>	<b>27.6%</b>

\*was Commercial Arts

Charity Campus					
	2000	2001	2002	2003	2004
Certified Nurse Assistant	0	22	41	7	0
Nursing	437	460	501	646	785
Practical Nursing	27	27	39	69	75
<b>Total</b>	<b>464</b>	<b>510</b>	<b>581</b>	<b>722</b>	<b>860</b>

Number Change 2000 to 2004
0
348
48
<b>396</b>

% Change 2000 to 2004
0.0%
44.3%
64.0%
<b>46.0%</b>

Northshore Site					
	2000	2001	2002	2003	2004
Accounting				48	41
Administrative Office Technology*				9	7
Air Conditioning & Refrigeration				0	0
American Sign Language Studies				8	2
Business Administration				94	103
Business Training				1	1
CADD (Drafting-ITMF)				4	6
Carpentry				0	0
Certified Nurse Assistant				0	0
CET-Architectural Technology				5	5
CET-Civil Construction Technology				6	3
CET-Construction Management				2	2
Computer Information Technology				27	22
Computer Network Technology				18	8
Computer Repair				2	2
Construction Management				2	0
Criminal Justice				37	39
Culinary Arts				2	8
Dental Hygiene				0	0
Dental Laboratory Technology				6	5
Diagnostic Medical Sonography				6	11
Dietetic Technician				5	5
Drafting (Certificate)				0	0
Early Childhood Education				64	81
Educational Interpreting for the Deaf				4	4
Electrical Construction Technician				0	0
Electrical Electronics Engineering Technology				7	8
Electronics Repair				0	0
Emergency Medical Technology				12	5
English as a Second Language				1	1
EST-Biomedical Equip Repair Technology				1	5
EST-Computer Repair Technology				1	4
EST-Electronics Repair Technology				1	0
Fine Arts				7	2
Fire Protection Technology				7	42
Food Service Careers				0	0
Funeral Service Education				4	5

Number Change 2003 to 2004
-7
-2
0
-6
9
0
2
0
0
0
-3
0
-5
-10
0
-2
2
6
0
-1
5
0
0
17
0
0
1
0
-7
0
4
3
-1
-5
35
0
1

% Change 2003 to 2004
-17.1%
-28.6%
0.0%
-300.0%
8.7%
0.0%
0.0%
0.0%
0.0%
0.0%
-100.0%
0.0%
-22.7%
-125.0%
0.0%
0.0%
5.1%
0.0%
0.0%
-20.0%
45.5%
0.0%
0.0%
21.0%
0.0%
0.0%
12.5%
0.0%
-140.0%
0.0%
80.0%
75.0%
0.0%
-250.0%
83.3%
0.0%
20.0%

Northshore Site, continued						Number Change 2003 to 2004	% Change 2003 to 2004
	2000	2001	2002	2003	2004		
General Science				18	34	16	47.1%
General Studies				177	193	16	8.3%
Health Information Technology				12	11	-1	-9.1%
Horticulture				1	1	0	0.0%
Hospitality				1	3	2	66.7%
Interior Design				8	8	0	0.0%
Legal Secretary				4	3	-1	-33.3%
Machine Tool Technology				0	0	0	0.0%
Management				30	24	-6	-25.0%
Manufacturing				0	0	0	0.0%
Massage Therapy				0	0	0	0.0%
Medical Coding					2	N/A	N/A
Medical Laboratory Technician				3	16	13	81.3%
Motor Vehicle Technology				1	3	2	66.7%
Music				5	1	-4	-400.0%
Nuclear Medicine Technology				3	5	2	40.0%
Nursing				0	0	0	0.0%
Occupational Therapy Assistant				6	6	0	0.0%
Ophthalmic Medical Assistant				2	0	-2	0.0%
Pastry Assistant					0	N/A	N/A
Performance & Media Arts				9	8	-1	-12.5%
Pharmacy Technician				17	15	-2	-13.3%
Physical Therapist Assisting				20	23	3	13.0%
Practical Nursing				9	27	18	66.7%
Pre-Nursing				310	430	120	27.9%
Radiation Therapy-Certificate				0	0	0	0.0%
Radiologic Technology				164	188	24	0.0%
Respiratory Care Technology				9	14	5	35.7%
Safety & Health Technology				0	1	1	100.0%
Surgical Technology				26	28	2	7.1%
Visual Communications*				11	7	-4	-57.1%
Welding Technology				0	0	0	0.0%
Workforce				0	0	0	0.0%
<b>Total</b>				<b>1,237</b>	<b>1,478</b>	<b>241</b>	<b>16.3%</b>

**Fall Enrollment History 2000-2004 by Program  
Ranked by Student Total**

College Wide						Number Change 2000 to 2004	% Change 2000 to 2004
	2000	2001	2002	2003	2004		
Pre-Nursing	1,537	1,833	2,467	3,053	3,256	1,719	52.8%
General Studies	1,970	1,924	1,960	2,009	1,941	-29	-1.5%
Radiologic Technology	518	671	1,038	1,359	1,223	705	57.6%
Business Administration	849	897	1,044	1,024	1,106	257	23.2%
Early Childhood Education	775	680	722	814	846	71	8.4%
Nursing	437	460	501	646	785	348	44.3%
Criminal Justice	496	517	518	579	528	32	6.1%
Accounting	449	489	544	501	503	54	10.7%
Computer Information Technology	666	625	634	572	435	-231	-53.1%
General Science	237	250	261	331	356	119	33.4%
Physical Therapist Assisting	282	274	345	302	307	25	8.1%
Pharmacy Technician	56	101	170	229	270	214	79.3%
Motor Vehicle Technology	124	132	126	175	266	142	53.4%
Management	177	207	247	249	261	84	32.2%
English as a Second Language	291	285	278	261	259	-32	-12.4%
Surgical Technology	206	212	239	237	252	46	18.3%
Practical Nursing	36	91	138	231	226	190	84.1%
Culinary Arts	198	190	192	219	224	26	11.6%
Computer Network Technology	293	255	274	278	214	-79	-36.9%
Performance & Media Arts	143	171	181	196	207	64	30.9%
Interior Design	155	178	199	203	191	36	18.8%
Emergency Medical Technology	102	92	110	102	182	80	44.0%
Visual Communications	201	197	201	209	179	-22	-12.3%
Respiratory Care Technology	163	171	161	173	169	6	3.6%
Funeral Service Education	146	148	153	176	163	17	10.4%
Health Information Technology	134	154	186	196	161	27	16.8%
Electrical Electronics Engineering Tech	121	134	148	159	151	30	19.9%
Medical Laboratory Technician	86	85	110	160	150	64	42.7%
Fine Arts	126	158	173	169	142	16	11.3%
Music	89	102	126	135	137	48	35.0%
CET-Architectural Technology	92	109	97	110	130	38	29.2%
Administrative Office Technology*	160	136	144	145	128	-32	-25.0%
Fire Protection Technology	264	320	162	145	124	-140	-112.9%
Diagnostic Medical Sonography	41	53	72	98	110	69	62.7%
CADD (Drafting-ITMF)	44	44	57	65	93	49	52.7%
Hospitality	108	96	100	83	89	-19	-21.3%
Legal Secretary	4	28	53	90	76	72	94.7%
Occupational Therapy Assistant	81	74	50	52	70	-11	-15.7%
Dietetic Technician	42	36	53	58	66	24	36.4%
EST-Biomedical Equip Repair Techno	33	26	43	52	61	28	45.9%
Horticulture	8	33	80	58	60	52	86.7%
CET-Civil Construction Technology	57	46	57	68	53	-4	-7.5%



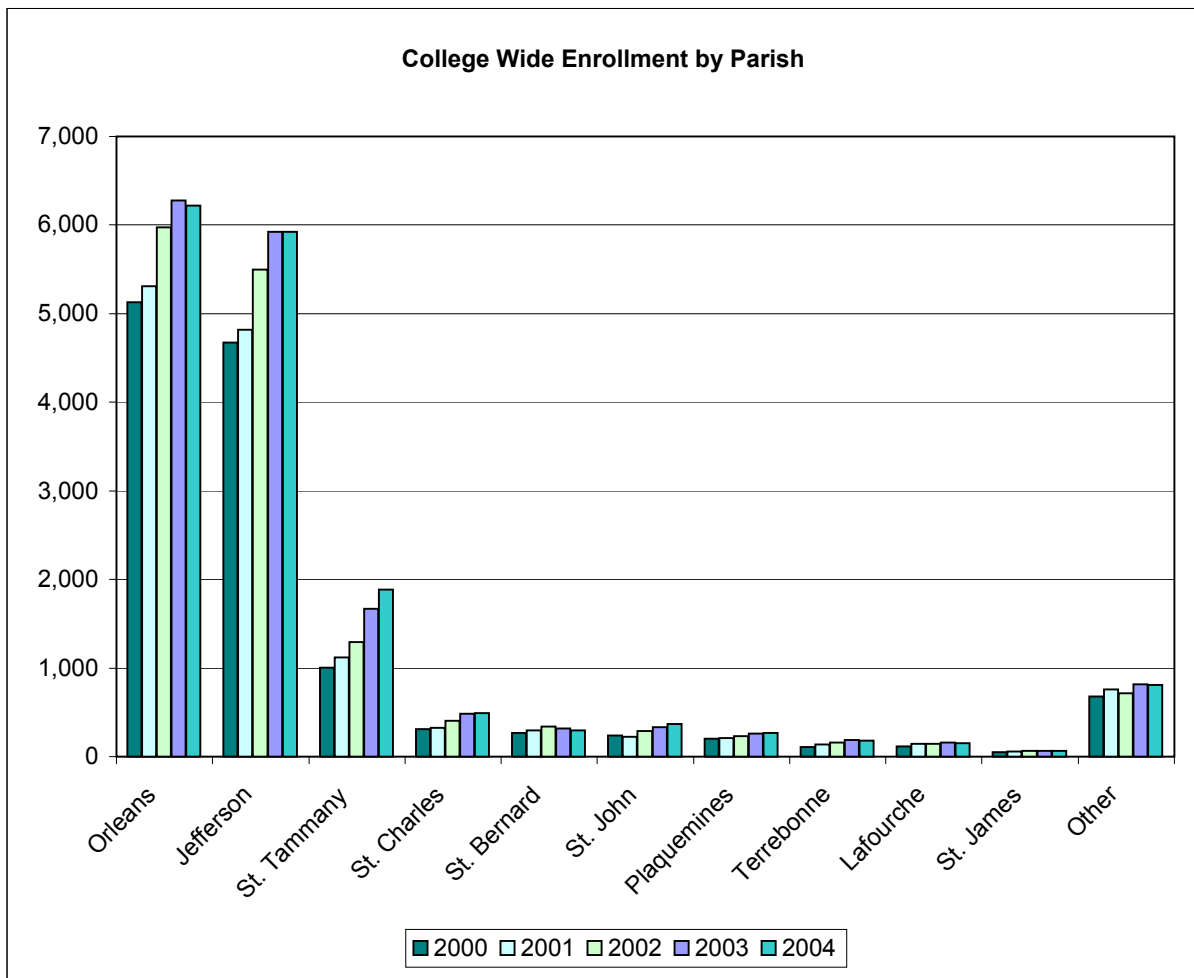
**Fall Enrollment History 2000-2004 by Program  
Ranked by Student Total (cont.)**

College Wide						Number Change	% Change
	2000	2001	2002	2003	2004	2000 to 2004	2000 to 2004
Educational Interpreting for the Deaf	84	61	75	63	50	-34	-68.0%
EST-Computer Repair Technology	36	36	59	41	49	13	26.5%
Nuclear Medicine Technology	17	16	23	36	44	27	61.4%
Computer Repair	78	55	45	38	42	-36	-85.7%
CET-Construction Management	14	34	29	33	41	27	65.9%
Medical Coding					38	38	100.0%
American Sign Language Studies	42	40	36	43	36	-6	-16.7%
Safety & Health Technology	48	42	47	29	31	-17	-54.8%
Massage Therapy				7	25	25	100.0%
Construction Management	16	13	13	17	22	6	27.3%
Electrical Construction Technician	40	36	16	6	22	-18	-81.8%
Dental Laboratory Technology	18	19	21	24	21	3	14.3%
EST-Electronics Repair Technology	13	19	31	31	17	4	23.5%
Machine Tool Technology	13	22	21	13	16	3	18.8%
Ophthalmic Medical Assistant	28	15	18	16	10	-18	-180.0%
Radiation Therapy-Certificate				3	9	9	100.0%
Carpentry	21	18	26	20	8	-13	-162.5%
Electronics Repair	29	17	16	11	8	-21	-262.5%
Dental Hygiene	81	61	39	22	6	-75	-1250.0%
Drafting (Certificate)	67	48	39	34	6	-61	-1016.7%
Pastry Assistant-Certificate					6	6	100.0%
Food Service Careers	8	30	34	17	5	-3	-60.0%
Business Training	45	47	22	6	3	-42	-1400.0%
Air Conditioning & Refrigeration	60	56	48	9	2	-58	-2900.0%
Manufacturing	6	5	3	3	2	-4	-200.0%
Certified Nurse Assistant	0	22	43	7	0	0	0.0%
Welding Technology	22	8	3	0	0	-22	0.0%
Workforce	1	0	0	0	0	-1	0.0%
<b>Total</b>	<b>12,784</b>	<b>13,404</b>	<b>15,121</b>	<b>16,500</b>	<b>16,669</b>	<b>3,885</b>	<b>23.3%</b>

\*\*\*was Manual Communication

### Fall Enrollment History 2000-2004 by Parish

College Wide						Number Change	% Change
	2000	2001	2002	2003	2004	2000 to 2004	2000 to 2004
Orleans	5,128	5,308	5,973	6,278	6,221	1,093	17.6%
Jefferson	4,674	4,815	5,500	5,925	5,922	1,248	21.1%
St. Tammany	1,005	1,120	1,294	1,671	1,887	882	46.7%
St. Charles	310	324	404	487	493	183	37.1%
St. Bernard	267	297	340	316	296	29	9.8%
St. John	237	227	289	334	369	132	35.8%
Plaquemines	202	213	234	262	270	68	25.2%
Terrebonne	111	140	161	189	183	72	39.3%
Lafourche	114	142	146	160	155	41	26.5%
St. James	54	56	64	62	64	10	15.6%
Other	682	762	716	816	809	127	15.7%
<b>Total</b>	<b>12,784</b>	<b>13,404</b>	<b>15,121</b>	<b>16,500</b>	<b>16,669</b>	<b>3,885</b>	<b>23.3%</b>



<b>City Park</b>					
	<b>2000</b>	<b>2001</b>	<b>2002</b>	<b>2003</b>	<b>2004</b>
Orleans	4,398	4,578	5,165	5,322	5,176
Jefferson	3,164	3,248	3,544	3,700	3,721
St. Tammany	946	1,054	1,223	449	467
St. Charles	278	292	374	440	444
St. Bernard	220	239	284	255	236
St. John	221	215	273	314	345
Plaquemines	45	50	61	64	71
Terrebonne	103	133	149	170	162
Lafourche	110	129	137	143	133
St. James	52	54	63	61	61
Other	648	676	634	637	566
<b>Total</b>	<b>10,185</b>	<b>10,668</b>	<b>11,907</b>	<b>11,555</b>	<b>11,382</b>

<b>Number Change</b>
<b>2000 to 2004</b>
778
557
-479
166
16
124
26
59
23
9
-82
<b>1,197</b>

<b>% Change</b>
<b>2000 to 2004</b>
15.0%
15.0%
-102.6%
37.4%
6.8%
35.9%
36.6%
36.4%
17.3%
14.8%
-14.5%
<b>10.5%</b>

<b>West Bank</b>					
	<b>2000</b>	<b>2001</b>	<b>2002</b>	<b>2003</b>	<b>2004</b>
Orleans	587	560	620	706	759
Jefferson	1,334	1,378	1,729	1,940	1,849
St. Tammany	4	9	6	5	15
St. Charles	23	23	21	30	26
St. Bernard	6	10	10	11	10
St. John	7	3	3	5	6
Plaquemines	153	157	162	187	183
Terrebonne	1	2	9	14	13
Lafourche	2	10	4	8	15
St. James	0	1	0	1	1
Other	18	43	69	79	72
<b>Total</b>	<b>2,135</b>	<b>2,196</b>	<b>2,633</b>	<b>2,986</b>	<b>2,949</b>

<b>Number Change</b>
<b>2000 to 2004</b>
172
515
11
3
4
-1
30
12
13
1
54
<b>814</b>

<b>% Change</b>
<b>2000 to 2004</b>
22.7%
27.9%
73.3%
11.5%
40.0%
-16.7%
16.4%
92.3%
86.7%
100.0%
75.0%
<b>27.6%</b>

<b>Charity School of Nursing</b>					
	<b>2000</b>	<b>2001</b>	<b>2002</b>	<b>2003</b>	<b>2004</b>
Orleans	143	170	188	239	267
Jefferson	176	189	227	278	333
St. Tammany	55	57	65	89	116
St. Charles	9	9	9	17	20
St. Bernard	41	48	46	49	47
St. John	9	9	13	15	16
Plaquemines	4	6	11	11	16
Terrebonne	7	5	3	3	6
Lafourche	2	3	5	7	6
St. James	2	1	1	0	2
Other	16	13	13	14	31
<b>Total</b>	<b>464</b>	<b>510</b>	<b>581</b>	<b>722</b>	<b>860</b>

<b>Number Change</b>
<b>2000 to 2004</b>
124
157
61
11
6
7
12
-1
4
0
15
<b>396</b>

<b>% Change</b>
<b>2000 to 2004</b>
46.4%
47.1%
52.6%
55.0%
12.8%
43.8%
75.0%
-16.7%
66.7%
0.0%
48.4%
<b>46.0%</b>

Slidell/Northshore						Number Change 2003 to 2004	% Change 2003 to 2004
	2000	2001	2002	2003	2004		
Orleans				11	19	8	42.1%
Jefferson				7	19	12	63.2%
St. Tammany				1,128	1,289	161	12.5%
St. Charles				1	3	2	66.7%
St. Bernard				1	3	2	66.7%
St. John				0	2	2	100.0%
Plaquemines				0	0	0	0.0%
Tangemphoa				32	62	30	48.4%
Terrebonne				2	2	0	0.0%
Lafourche				2	1	-1	-100.0%
St. James				0	0	0	0.0%
Washington				31	47	16	34.0%
Other				22	31	9	29.0%
<b>Total</b>				<b>1,237</b>	<b>1,478</b>	<b>241</b>	<b>16.3%</b>

### Fall Enrollment History 2000-2004 by Top "Feeder" High Schools

College Wide						Number Change 2000 to 2004	% Change 2000 to 2004
	2000	2001	2002	2003	2004		
<b>TOTAL First Time Freshman</b>	2,560	2,661	2,784	2,309	2,941	381	13.0%
Alcee Fortier	26	35	23	25	34	8	23.5%
Alfred Lawless Senior	26	14	25	19	30	4	13.3%
Alfred T. Bonnabel	54	59	57	51	74	20	27.0%
Andrew Jackson Fundamental	16	13	19	7	5	-11	-220.0%
Archbishop Blenk	14	24	16	9	10	-4	-40.0%
Archbishop Chapelle	18	23	21	24	19	1	5.3%
Archbishop Rummel	23	39	27	10	37	14	37.8%
Archbishop Shaw	16	12	25	10	18	2	11.1%
Belle Chasse	35	28	19	32	28	-7	-25.0%
Booker T. Washington	12	19	22	24	21	9	42.9%
Brother Martin	12	11	11	8	12	0	0.0%
Chalmette	15	7	3	6	11	-4	-36.4%
Delasalle	23	19	22	19	20	-3	-15.0%
Destrehan	25	27	35	30	38	13	34.2%
East Jefferson	36	36	28	36	47	11	23.4%
East Saint John	12	26	20	12	16	4	25.0%
Edna Karr Magnet	24	6	12	17	9	-15	-166.7%
F.T. Nicholls	23	21	28	16	19	-4	-21.1%
Fisher Middle	14	15	13	10	16	2	12.5%
Fredrick A. Douglass Senior	15	18	13	10	9	-6	-66.7%
George W. Carver Sr	30	32	29	23	32	2	6.3%
Grace King	47	52	46	32	60	13	21.7%
Hahnville	26	27	27	17	35	9	25.7%
Heritage Academy	0	5	11	11	7	7	100.0%
Holy Cross	16	12	7	9	15	-1	-6.7%
Immaculata	28	27	9	6	12	-16	-133.3%

## Fall Enrollment History 2000-2004 by Top "Feeder" High Schools

College Wide						Number Change	%
	2000	2001	2002	2003	2004		
J.S. Clark Senior	24	28	39	27	30	6	20.0%
John Curtis Christian	16	16	17	9	4	-12	-300.0%
John Ehret	71	66	100	69	88	17	19.3%
John F. Kennedy Senior	76	89	93	89	90	14	15.6%
John McDonogh Senior	53	52	74	45	52	-1	-1.9%
L.B. Landry	15	17	18	21	9	-6	-66.7%
L.E. Rabouin Voc	25	31	45	41	52	27	51.9%
L.W. Higgins	66	67	73	58	61	-5	-8.2%
Marion Abramson	51	54	55	50	71	20	28.2%
Mc Donogh 35 Senior	23	29	44	19	27	4	14.8%
McMain Magnet	8	11	12	7	13	5	38.5%
Northshore	20	21	25	23	28	8	28.6%
O.Perry Walker Senior	45	48	39	28	41	-4	-9.8%
Pearl River	8	18	12	13	19	11	57.9%
Redeemer	25	20	10	12	18	-7	-38.9%
Riverdale	48	30	41	29	27	-21	-77.8%
Salmen	11	24	20	21	39	28	71.8%
Sarah Reed	33	53	40	52	54	21	38.9%
Slidell	43	42	40	52	49	6	12.2%
St. Augustine	12	12	12	8	17	5	29.4%
St. Mary's Academy	21	12	10	11	15	-6	-40.0%
Walter L. Cohen	39	34	34	20	27	-12	-44.4%
Warren Easton Fundamental	59	55	85	49	57	-2	-3.5%
West Jefferson	77	75	91	53	73	-4	-5.5%
Unknown	305	447	316	279	306	1	0.3%
G.E.D.	325	307	337	256	425	100	23.5%
Non-High School Grads	23	87	161	38	1	-22	-2200.0%
Other	452	309	373	457	614	162	26.4%

## Fall Enrollment History 2000-2004 by Zip Code (zip code order)

College Wide							Number Change	% Change
	Zip Code	2000	2001	2002	2003	2004	2000 to 2004	2000 to 2004
Metairie S of I-10	70001	467	470	531	545	562	95	16.9%
Metairie	70002	193	226	217	249	225	32	14.2%
West Metairie	70003	431	452	499	522	554	123	22.2%
Old Metairie-Bucktown	70005	237	222	235	256	253	16	6.3%
Metairie Clearview N of I-10	70006	207	182	192	204	213	6	2.8%
Belle Chasse	70037	152	150	180	187	192	40	20.8%
Chalmette	70043	144	134	160	143	138	-6	-4.3%
Destrehan	70047	110	116	122	139	131	21	16.0%
Gretna	70053	164	180	206	230	222	58	26.1%
Gretna/S of Whitney	70056	486	528	612	599	374	-112	-29.9%
Harvey	70058	494	520	643	729	701	207	29.5%
South Kenner	70062	147	138	189	196	232	85	36.6%
North Kenner	70065	618	638	677	742	745	127	17.0%
LaPlace	70068	167	180	227	265	289	122	42.2%
Marrero	70072	630	638	756	862	833	203	24.4%
Westwego	70094	270	303	378	405	409	139	34.0%
Algiers	70114	365	379	424	471	440	75	17.0%
Uptown	70115	300	321	334	331	331	31	9.4%
French Quarter-Marigny	70116	109	135	116	127	141	32	22.7%
Bywater/ Lower 9th Ward	70117	480	530	638	638	600	120	20.0%
Carrollton/Riverbend	70118	280	305	326	363	385	105	27.3%
Mid City	70119	494	551	624	635	628	134	21.3%
N.O. Postal Box Zone	70121	149	149	153	150	163	14	8.6%
Lakefront/Gentilly	70122	524	585	637	670	631	107	17.0%
Harahan-Jefferson	70123	236	248	277	283	276	40	14.5%
Lakefront/Lakeview	70124	204	202	221	243	225	21	9.3%
Broadmoor	70125	164	168	187	219	214	50	23.4%
N.O. East Crowder	70126	513	538	642	627	623	110	17.7%
N.O. East Crowder to Wright Rd	70127	380	376	457	479	451	71	15.7%
N.O. East Wright Rd to I-510	70128	262	270	321	331	351	89	25.4%
N.O. East Past I-510	70129	168	167	213	255	244	76	31.1%
N.O. CBD Lower Garden District	70130	96	109	149	141	143	47	32.9%
Lower Coast Algiers	70131	349	347	357	390	438	89	20.3%
Slidell	70458	300	315	343	413	405	105	25.9%
Slidell	70460	181	200	223	282	308	127	41.2%
Slidell	70461	182	227	264	294	339	157	46.3%
Subtotal		10,653	11,199	12,730	13,615	13,409	2,756	20.6%
Other Louisiana		1,913	2,028	2,282	2,783	3,185	1,272	39.9%
Total Louisiana		12,566	13,227	15,012	16,398	16,594	4,028	24.3%
Out-of-State/Unknown		218	177	109	103	75	-143	-190.7%
<b>Total</b>		<b>12,784</b>	<b>13,404</b>	<b>15,121</b>	<b>16,501</b>	<b>16,669</b>	<b>3,885</b>	<b>23.3%</b>

City Park							Number Change	% Change
	Zip Code	2000	2001	2002	2003	2004	2001 to 2004	2001 to 2004
Metairie S of I-10	70001	N/A	437	502	505	512	75	14.6%
Metairie	70002	N/A	218	206	238	204	-14	-6.9%
West Metairie	70003	N/A	432	463	475	497	65	13.1%
Old Metairie-Bucktown	70005	N/A	215	227	240	239	24	10.0%
Metairie Clearview N of I-10	70006	N/A	176	185	194	203	27	13.3%
Belle Chasse	70037	N/A	27	130	45	48	21	43.8%
Chalmette	70043	N/A	109	141	117	110	1	0.9%
Destrehan	70047	N/A	111	116	130	123	12	9.8%
Gretna	70053	N/A	54	60	68	67	13	19.4%
Gretna/S of Whitney	70056	N/A	186	203	194	208	22	10.6%
Harvey	70058	N/A	204	192	212	227	23	10.1%
South Kenner	70062	N/A	131	179	186	219	88	40.2%
North Kenner	70065	N/A	612	653	709	675	63	9.3%
LaPlace	70068	N/A	170	215	250	271	101	37.3%
Marrero	70072	N/A	189	227	235	242	53	21.9%
Westwego	70094	N/A	138	154	160	160	22	13.8%
Algiers	70114	N/A	126	127	135	134	8	6.0%
Uptown	70115	N/A	310	305	301	290	-20	-6.9%
French Quarter-Marigny	70116	N/A	129	113	125	131	2	1.5%
Bywater/ Lower 9th Ward	70117	N/A	510	615	609	559	49	8.8%
Carrollton/Riverbend	70118	N/A	300	316	341	354	54	15.3%
Mid City	70119	N/A	536	604	612	599	63	10.5%
N.O. Postal Box Zone	70121	N/A	142	144	138	143	1	0.7%
Lakefront/Gentilly	70122	N/A	571	609	634	590	19	3.2%
Harahan-Jefferson	70123	N/A	228	251	259	249	21	8.4%
Lakefront/Lakeview	70124	N/A	184	205	229	205	21	10.2%
Broadmoor	70125	N/A	164	184	208	200	36	18.0%
N.O. East Crowder	70126	N/A	515	617	590	585	70	12.0%
N.O. East Crowder to Wright Rd	70127	N/A	363	440	456	427	64	15.0%
N.O. East Wright Rd to I-510	70128	N/A	255	306	304	325	70	21.5%
N.O. East Past I-510	70129	N/A	161	203	240	231	70	30.3%
N.O. CBD Lower Garden District	70130	N/A	102	131	129	123	21	17.1%
Lower Coast Algiers	70131	N/A	106	124	131	150	44	29.3%
Slidell	70458	N/A	297	321	92	94	-203	-216.0%
Slidell	70460	N/A	191	215	69	77	-114	-148.1%
Slidell	70461	N/A	212	252	89	99	-113	-114.1%
Subtotal		N/A	8,811	9,935	9,649	9,570	759	7.9%
Other Louisiana		N/A	1,721	1,871	1,835	1,764	43	2.4%
Total Louisiana		N/A	10,532	11,806	11,484	11,334	802	7.1%
Out-of-State/Unknown		N/A	166	101	83	48	-118	-245.8%
<b>Total</b>		<b>N/A</b>	<b>10,698</b>	<b>11,907</b>	<b>11,567</b>	<b>11,382</b>	<b>684</b>	<b>6.0%</b>

<b>West Bank</b>							<b>Number Change</b>	<b>% Change</b>
	<b>Zip Code</b>	<b>2000</b>	<b>2001</b>	<b>2002</b>	<b>2003</b>	<b>2004</b>	<b>2001 to 2004</b>	<b>2001 to 2004</b>
Metairie S of I-10	70001	N/A	7	4	1	6	-1	-16.7%
Metairie	70002	N/A	4	2	2	7	3	42.9%
West Metairie	70003	N/A	1	5	6	9	8	88.9%
Old Metairie-Bucktown	70005	N/A	0	1	3	3	3	100.0%
Metairie Clearview N of I-10	70006	N/A	2	0	0	0	-2	0.0%
Belle Chasse	70037	N/A	119	130	135	137	18	13.1%
Chalmette	70043	N/A	2	1	3	2	0	0.0%
Destrehan	70047	N/A	2	2	1	1	-1	-100.0%
Gretna	70053	N/A	122	141	153	144	22	15.3%
Gretna/S of Whitney	70056	N/A	316	391	380	374	58	15.5%
Harvey	70058	N/A	301	428	495	437	136	31.1%
South Kenner	70062	N/A	0	2	1	6	6	100.0%
North Kenner	70065	N/A	1	1	5	17	16	94.1%
Jean Lafitte	70067	N/A	31	36	48	46	15	32.6%
LaPlace	70068	N/A	1	1	4	6	5	83.3%
Marrero	70072	N/A	423	492	583	552	129	23.4%
Plaquemines	70083	N/A	28	30	35	32	4	12.5%
Westwego	70094	N/A	151	213	229	231	80	34.6%
Algiers	70114	N/A	243	291	323	287	44	15.3%
Uptown	70115	N/A	3	9	8	20	17	85.0%
French Quarter-Marigny	70116	N/A	0	0	0	4	4	100.0%
Bywater/ Lower 9th Ward	70117	N/A	5	9	14	16	11	68.8%
Carrollton/Riverbend	70118	N/A	1	3	4	16	15	93.8%
Mid City	70119	N/A	6	4	6	11	5	45.5%
N.O. Postal Box Zone	70121	N/A	3	4	5	3	0	0.0%
Lakefront/Gentilly	70122	N/A	3	10	13	15	12	80.0%
Harahan-Jefferson	70123	N/A	5	6	6	14	9	64.3%
Lakefront/Lakeview	70124	N/A	2	3	2	4	2	50.0%
Broadmoor	70125	N/A	1	1	3	9	8	88.9%
N.O. East Crowder	70126	N/A	7	11	14	15	8	53.3%
N.O. East Crowder to Wright Rd	70127	N/A	2	5	8	7	5	71.4%
N.O. East Wright Rd to I-510	70128	N/A	4	6	8	7	3	42.9%
N.O. East Past I-510	70129	N/A	3	3	4	5	2	40.0%
N.O. CBD Lower Garden District	70130	N/A	2	9	6	13	11	84.6%
Lower Coast Algiers	70131	N/A	226	219	247	271	45	16.6%
Slidell	70458	N/A	0	2	0	2	2	100.0%
Slidell	70460	N/A	1	0	0	1	0	0.0%
Slidell	70461	N/A	1	0	1	0	-1	0.0%
Subtotal		N/A	2,029	2,475	2,756	2,730	701	25.7%
Other Louisiana		N/A	158	152	223	210	52	24.8%
Total Louisiana		N/A	2,187	2,627	2,979	2,940	753	25.6%
Out-of-State/Unknown		N/A	9	6	10	9	0	0.0%
<b>Total</b>		<b>N/A</b>	<b>2,196</b>	<b>2,633</b>	<b>2,989</b>	<b>2,949</b>	<b>753</b>	<b>25.5%</b>



Charity School of Nursing							Number Change	% Change
	Zip Code	2000	2001	2002	2003	2004	2001 to 2004	2001 to 2004
Metairie S of I-10	70001	N/A	26	25	33	44	18	40.9%
Metairie	70002	N/A	4	9	9	13	9	69.2%
West Metairie	70003	N/A	19	31	41	46	27	58.7%
Old Metairie-Bucktown	70005	N/A	7	7	11	10	3	30.0%
Metairie Clearview N of I-10	70006	N/A	4	7	10	7	3	42.9%
Belle Chasse	70037	N/A	4	11	7	7	3	42.9%
Chalmette	70043	N/A	23	18	22	26	3	11.5%
Destrehan	70047	N/A	3	4	8	6	3	50.0%
Gretna	70053	N/A	4	5	9	11	7	63.6%
Gretna/S of Whitney	70056	N/A	26	18	25	31	5	16.1%
Harvey	70058	N/A	15	23	22	36	21	58.3%
South Kenner	70062	N/A	7	8	8	7	0	0.0%
North Kenner	70065	N/A	25	23	28	50	25	50.0%
LaPlace	70068	N/A	9	11	11	11	2	18.2%
Marrero	70072	N/A	26	37	44	39	13	33.3%
Westwego	70094	N/A	14	11	16	16	2	12.5%
Algiers	70114	N/A	10	6	13	18	8	44.4%
Uptown	70115	N/A	8	20	21	21	13	61.9%
French Quarter-Marigny	70116	N/A	6	3	2	5	-1	-20.0%
Bywater/ Lower 9th Ward	70117	N/A	15	14	14	23	8	34.8%
Carrollton/Riverbend	70118	N/A	4	7	18	14	10	71.4%
Mid City	70119	N/A	9	16	16	18	9	50.0%
N.O. Postal Box Zone	70121	N/A	4	5	7	17	13	76.5%
Lakefront/Gentilly	70122	N/A	11	18	23	26	15	57.7%
Harahan-Jefferson	70123	N/A	15	20	17	12	-3	-25.0%
Lakefront/Lakeview	70124	N/A	16	13	12	16	0	0.0%
Broadmoor	70125	N/A	3	2	8	5	2	40.0%
N.O. East Crowder	70126	N/A	16	14	23	23	7	30.4%
N.O. East Crowder to Wright Rd	70127	N/A	11	12	14	16	5	31.3%
N.O. East Wright Rd to I-510	70128	N/A	11	9	19	19	8	42.1%
N.O. East Past I-510	70129	N/A	3	7	10	5	2	40.0%
N.O. CBD Lower Garden District	70130	N/A	5	9	6	7	2	28.6%
Lower Coast Algiers	70131	N/A	15	14	12	16	1	6.3%
Slidell	70458	N/A	18	20	27	32	14	43.8%
Slidell	70460	N/A	8	8	11	21	13	61.9%
Slidell	70461	N/A	14	12	17	15	1	6.7%
Subtotal		N/A	418	477	594	689	271	39.3%
Other Louisiana		N/A	90	102	128	163	73	44.8%
Total Louisiana		N/A	508	579	722	852	344	40.4%
Out-of-State/Unknown		N/A	2	2	3	8	6	75.0%
<b>Total</b>		<b>N/A</b>	<b>510</b>	<b>581</b>	<b>725</b>	<b>860</b>	<b>350</b>	<b>40.7%</b>

Slidell/Northshore							Number Change	% Change
	Zip Code	2000	2001	2002	2003	2004	2003 to 2004	2003 to 2004
Metairie S of I-10	70001						0	0.0%
Metairie	70002				0	1	1	100.0%
West Metairie	70003				0	2	2	100.0%
Old Metairie-Bucktown	70005				2	1	-1	-100.0%
Metairie Clearview N of I-10	70006				0	3	3	100.0%
Belle Chasse	70037						0	0.0%
Chalmette	70043				1	0	-1	0.0%
Destrehan	70047				0	1	1	100.0%
Gretna	70053						0	0.0%
Gretna/S of Whitney	70056						0	0.0%
Harvey	70058				0	1	1	100.0%
South Kenner	70062				1	0	-1	0.0%
North Kenner	70065				0	3	3	100.0%
LaPlace	70068				0	1	1	100.0%
Marrero	70072						0	0.0%
Westwego	70094				0	2	2	100.0%
Algiers	70114				0	1	1	100.0%
Uptown	70115				1	0	-1	0.0%
French Quarter-Marigny	70116				0	1	1	100.0%
Bywater/ Lower 9th Ward	70117				1	2	1	50.0%
Carrollton/Riverbend	70118				0	1	1	100.0%
Mid City	70119				1	0	-1	0.0%
N.O. Postal Box Zone	70121						0	0.0%
Lakefront/Gentilly	70122						0	0.0%
Harahan-Jefferson	70123				1	1	0	0.0%
Lakefront/Lakeview	70124						0	0.0%
Broadmoor	70125						0	0.0%
N.O. East Crowder	70126						0	0.0%
N.O. East Crowder to Wright Rd	70127				1	1	0	0.0%
N.O. East Wright Rd to I-510	70128						0	0.0%
N.O. East Past I-510	70129				1	3	2	66.7%
N.O. CBD Lower Garden District	70130						0	0.0%
Lower Coast Algiers	70131					1	1	100.0%
St. Tammany	70420				32	44	12	27.3%
Washington	70427				23	28	5	17.9%
Covington	70433				83	110	27	24.5%
Covington	70435				27	40	13	32.5%
St. Tammany	70445				58	68	10	14.7%
St. Tammany	70448				48	70	22	31.4%
St. Tammany	70452				75	70	-5	-7.1%
Slidell	70458				294	277	-17	-6.1%
Slidell	70460				202	209	7	3.3%
Slidell	70461				187	225	38	16.9%
St. Tammany	70471				49	61	12	19.7%
Subtotal					1,088	1,228	140	11.4%
Other Louisiana					125	240	115	47.9%
Total Louisiana					1,213	1,468	255	17.4%
Out-of-State/Unknown					7	10	3	30.0%
<b>Total</b>					<b>1,220</b>	<b>1,478</b>	<b>258</b>	<b>17.5%</b>