

Delgado

COMMUNITY COLLEGE

5 Year Analysis Final Report

Spring 2000-2004



Published on September 7, 2004

By The Office of Institutional Research

Table of Contents	page no.
Summary	
Enrollment by Gender	1
Enrollment by Ethnicity	1
Enrollment by Age	4
Enrollment by Admission Status	6
Enrollment by Classification	6
Full-time/Part-time Status, Headcount, FTE, SCH	9
Enrollment by Award Sought	11
Enrollment by Division	12
Enrollment by Program	13
Enrollment by Program Ranked by Student Total	19
Enrollment by Parish	21
Top 50 "Feeder" High Schools of First Time Freshmen	23
Enrollment by Zip Code	25

SUMMARY

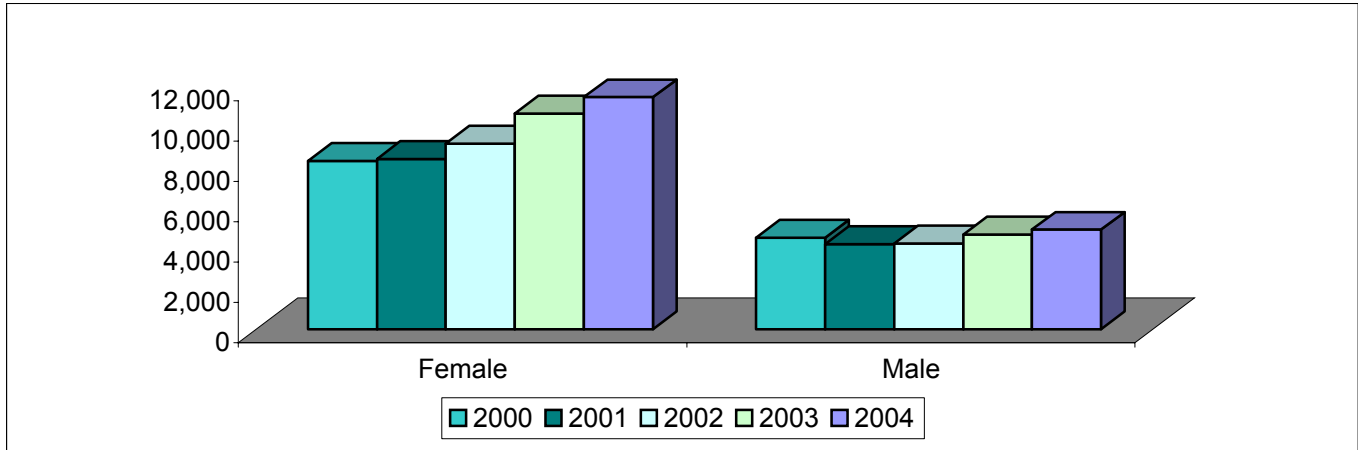
- ✓ The Spring 2004 enrollment of 16,442 is our highest spring enrollment yet. Our highest enrollment was 16,501 in Fall 2003.
- ✓ Enrollment increased by 21.5% from Spring 2000 to Spring 2004. It increased 7% from Spring 2003.
- ✓ City Park, our largest campus has increased by only 9% over the last five years. The creation of the Northshore site has absorbed some of City Park's enrollment.
- ✓ West Bank has steadily grown by 29% over the last 5 years.
- ✓ Charity School of Nursing enrollment increased by 41.5% over the last 5 years. (Night classes were added in Fall 2003 which contributed to this increase)
- ✓ The Northshore site was created in Spring 2003 and has increased 25.7%.
- ✓ Our female enrollment increased by 27.4% since Spring 2000. Our male enrollment increased by only 7.8%.
- ✓ Over the last 5 years, our African American enrollment has increased by 26.4%, our white enrollment by only 6.7% and our Hispanic enrollment declined by 7.9%.
- ✓ Over the last 5 years, continuing student enrollment increased 25%, while First-time Freshman increased by 6.2%.
- ✓ More students are seeking degrees, as non-degree seekers decline 65% over the last 5 years.
- ✓ Nursing is our largest growing program with an increase of 1,630 students in Pre-nursing, and an increase of 280 accepted into the program over the last 5 years.
- ✓ Radiologic Technology has also has a large increase over the last five years, going from 457 majors in Spring 2000 to 1,306 in Spring 2004. This includes students who have not been accepted into the program.
- ✓ Approximately 39% of all programs show a decrease in enrollment since 2000, despite the large overall increase.
- ✓ FTE'S have increased by 2,469 or 23.5% over the last 5 years.
- ✓ Scheduled credit hours has increased by 23.5% since Spring 2000.

Spring Enrollment History 2000-2004 by Gender

College Wide					
Gender	2000	2001	2002	2003	2004
Female	8,348	8,446	9,210	10,682	11,505
Male	4,554	4,230	4,260	4,690	4,937
Total	12,902	12,676	13,470	15,372	16,442

Number Change 2000 to 2004
3,157
383
3,540

% Change 2000 to 2004
27.4%
7.8%
21.5%

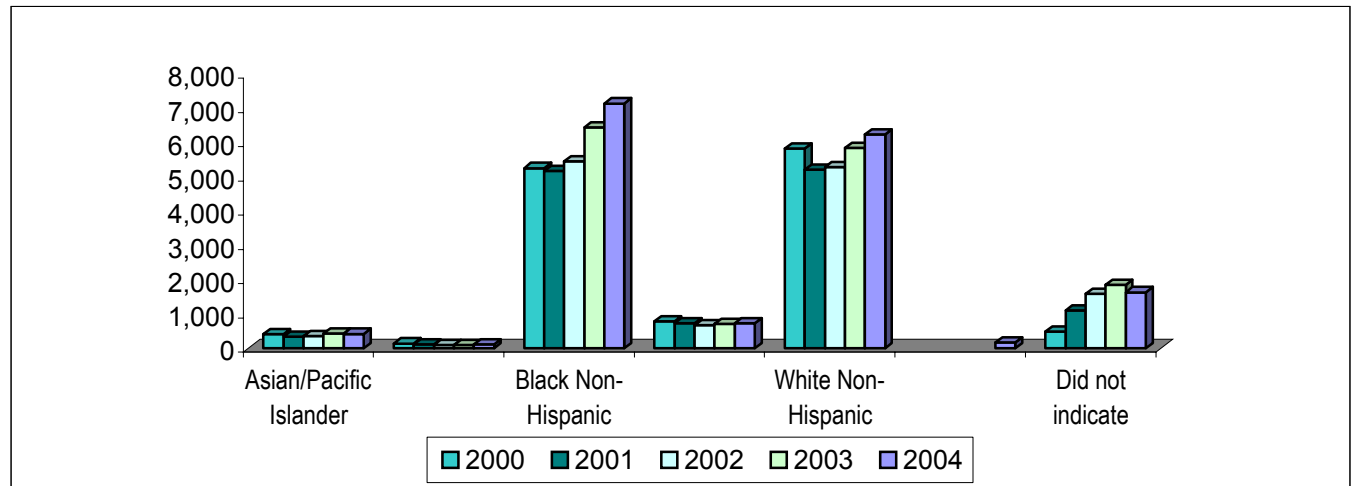


Spring Enrollment History 2000-2004 by Ethnicity

College Wide					
Ethnicity	2000	2001	2002	2003	2004
Asian/Pacific Islander	404	336	357	423	418
Native American	138	111	97	87	110
Black Non-Hispanic	5,263	5,182	5,463	6,448	7,152
Hispanic	779	725	668	702	722
White Non-Hispanic	5,827	5,213	5,292	5,859	6,243
Nonresident Alien					164
Did not indicate	491	1,109	1,593	1,853	1,633
Total	12,902	12,676	13,470	15,372	16,442

Number Change 2000 to 2004
14
-28
1,889
-57
416
N/A
1,142
3,540

% Change 2000 to 2004
3.3%
-25.5%
26.4%
-7.9%
6.7%
N/A
69.9%
21.5%



Spring Enrollment History 2000-2004 by Gender by Campus

						Number Change	% Change
City Park Campus	2000	2001	2002	2003	2004	2000 to 2004	2000 to 2004
Female	6,405	6,485	7,003	7,402	7,563	1,158	15.3%
Male	3,884	3,615	3,613	3,662	3,743	-141	-3.8%
Total	10,289	10,100	10,616	11,064	11,306	1,017	9.0%

						Number Change	% Change
West Bank Campus	2000	2001	2002	2003	2004	2000 to 2004	2000 to 2004
Female	1,563	1,578	1,757	2,043	2,284	721	31.6%
Male	589	533	579	685	747	158	21.2%
Total	2,152	2,111	2,336	2,728	3,031	879	29.0%

						Number Change	% Change
Charity School of Nursing	2000	2001	2002	2003	2004	2000 to 2004	2000 to 2004
Female	380	383	450	527	690	310	44.9%
Male	81	82	68	75	98	17	17.3%
Total	461	465	518	602	788	327	41.5%

						Number Change	% Change
Northshore Site	2000	2001	2002	2003	2004	2003 to 2004	2003 to 2004
Female				710	968	258	26.7%
Male				268	349	81	23.2%
Total				978	1,317	339	25.7%

Spring Enrollment History 2000-2004 by Ethnicity by Campus

						Number Change	% Change
City Park Campus	2000	2001	2002	2003	2004	2000 to 2004	2000 to 2004
Asian/Pacific Islander	339	287	305	334	329	-10	-3.0%
Native American	96	80	62	42	60	-36	-60.0%
Black Non-Hispanic	4,287	4156	4,293	4,990	5,297	1,010	19.1%
Hispanic	663	596	552	561	529	-134	-25.3%
White Non-Hispanic	4,546	4054	4,101	3,999	4,041	-505	-12.5%
Nonresident Alien					157	N/A	N/A
Did not indicate	358	927	1,303	1,138	893	535	59.9%
Total	10,289	10,100	10,616	11,064	11,306	1,017	9.0%

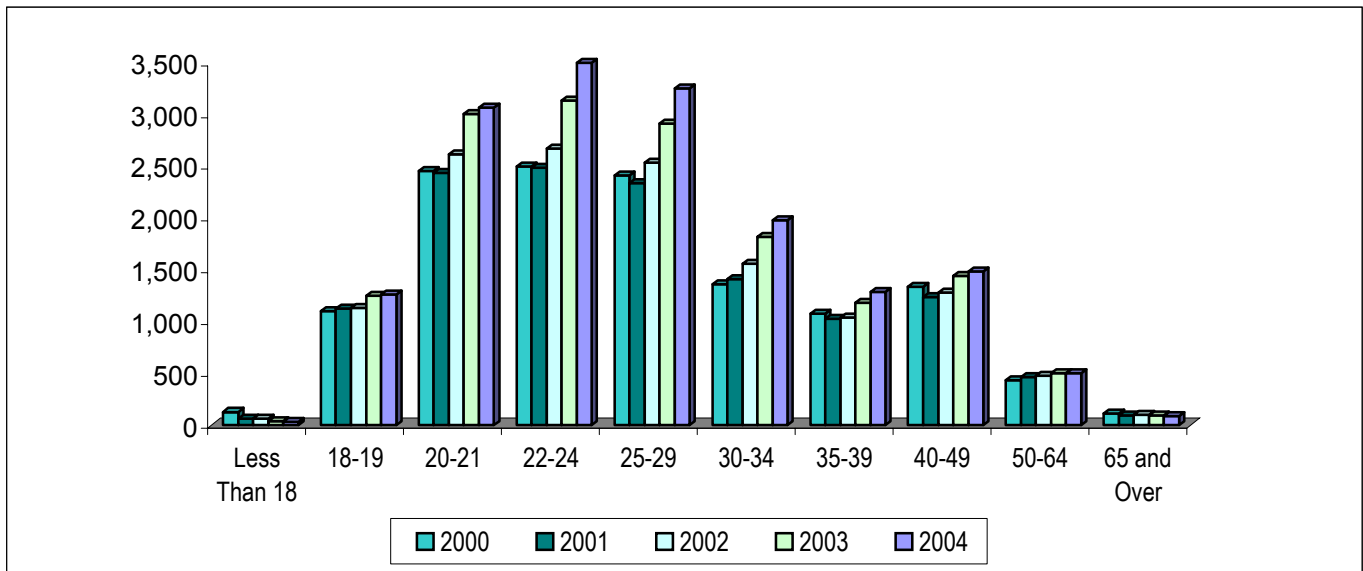
						Number Change	% Change
West Bank Campus	2000	2001	2002	2003	2004	2000 to 2004	2000 to 2004
Asian/Pacific Islander	59	43	46	69	67	8	11.9%
Native American	33	26	31	30	28	-5	-17.9%
Black Non-Hispanic	872	919	1039	1,202	1,473	601	40.8%
Hispanic	96	105	96	101	124	28	22.6%
White Non-Hispanic	975	853	870	878	934	-41	-4.4%
Nonresident Alien					3	N/A	N/A
Did not indicate	117	165	254	448	402	285	70.9%
Total	2,152	2,111	2,336	2,728	3,031	879	29.0%

						Number Change	% Change
Charity School of Nursing	2000	2001	2002	2003	2004	2000 to 2004	2000 to 2004
Asian/Pacific Islander	6	6	6	14	15	9	60.0%
Native American	9	5	4	7	8	-1	-12.5%
Black Non-Hispanic	104	107	131	117	183	79	43.2%
Hispanic	20	24	20	18	34	14	41.2%
White Non-Hispanic	306	306	321	377	435	129	29.7%
Nonresident Alien					4	N/A	N/A
Did not indicate	16	17	36	69	109	93	85.3%
Total	461	465	518	602	788	327	41.5%

						Number Change	% Change
Northshore Site	2000	2001	2002	2003	2004	2003 to 2004	2003 to 2004
Asian/Pacific Islander				6	7	1	14.3%
Native American				8	14	6	42.9%
Black Non-Hispanic				139	199	60	30.2%
Hispanic				22	35	13	37.1%
White Non-Hispanic				605	833	228	27.4%
Nonresident Alien					0	0	N/A
Did not indicate				198	229	31	13.5%
Total				978	1,317	339	25.7%

Spring Enrollment History 2000-2004 by Age

College Wide						Number Change 2000 to 2004	% Change 2000 to 2004
	2000	2001	2002	2003	2004		
Less Than 18	126	63	62	38	28	-98	-350.0%
18-19	1,098	1,124	1,133	1,248	1,262	164	13.0%
20-21	2,453	2,438	2,618	3,007	3,065	612	20.0%
22-24	2,496	2,485	2,674	3,133	3,498	1,002	28.6%
25-29	2,413	2,339	2,535	2,914	3,256	843	25.9%
30-34	1,359	1,411	1,558	1,817	1,978	619	31.3%
35-39	1,077	1,025	1,037	1,181	1,287	210	16.3%
40-49	1,336	1,236	1,279	1,443	1,483	147	9.9%
50-64	433	461	473	500	500	67	13.4%
65 and Over	111	93	101	91	85	-26	-30.6%
Total	12,902	12,675	13,470	15,372	16,442	3,540	21.5%
Average Age	28	28	28	29	28	0	0.0%



Spring Enrollment History 2000-2004 by Age by Campus

City Park Campus						Number Change 2000 to 2004	% Change 2000 to 2004
	2000	2001	2002	2003	2004		
Less Than 18	87	35	35	20	15	-72	-480.0%
18-19	887	907	908	899	879	-8	-0.9%
20-21	1,988	1,976	2,080	2,256	2,177	189	8.7%
22-24	2,002	1,983	2,125	2,298	2,513	511	20.3%
25-29	1,902	1,868	1,989	2,062	2,288	386	16.9%
30-34	1,062	1,117	1,209	1,262	1,286	224	17.4%
35-39	865	793	804	819	802	-63	-7.9%
40-49	1,070	960	998	1,032	942	-128	-13.6%
50-64	357	401	396	357	346	-11	-3.2%
65 and Over	69	60	72	59	58	-11	-19.0%
Total	10,289	10,100	10,616	11,064	11,306	1,017	9.0%

Spring Enrollment History 2000-2004 by Age by Campus (cont.)

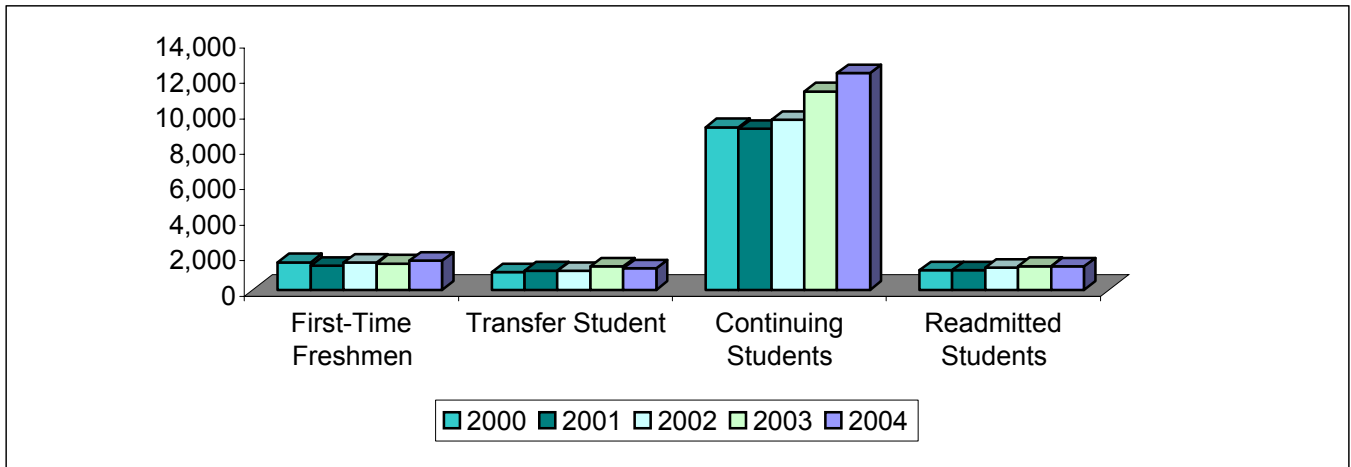
						Number Change 2000 to 2004	% Change 2000 to 2004
West Bank Campus							
	2000	2001	2002	2003	2004		
Less Than 18	39	28	27	17	11	-28	-254.5%
18-19	211	216	223	252	290	79	27.2%
20-21	449	443	503	547	587	138	23.5%
22-24	403	409	448	542	619	216	34.9%
25-29	361	321	385	496	535	174	32.5%
30-34	191	203	244	300	335	144	43.0%
35-39	161	182	186	225	254	93	36.6%
40-49	226	218	219	227	278	52	18.7%
50-64	70	57	72	97	98	28	28.6%
65 and Over	41	33	29	25	24	-17	-70.8%
Total	2,152	2,110	2,336	2,728	3,031	879	29.0%

						Number Change 2000 to 2004	% Change 2000 to 2004
Charity School of Nursing							
	2000	2001	2002	2003	2004		
Less Than 18	0	0	0	0	0	0	0.0%
18-19	0	1	2	1	2	2	100.0%
20-21	16	19	35	25	39	23	59.0%
22-24	91	93	101	120	148	57	38.5%
25-29	150	150	161	184	227	77	33.9%
30-34	106	91	105	139	171	65	38.0%
35-39	51	50	47	56	96	45	46.9%
40-49	40	58	62	63	82	42	51.2%
50-64	6	3	5	14	23	17	73.9%
65 and Over	1	0	0	0	0	-1	0.0%
Total	461	465	518	602	788	327	41.5%

						Number Change 2003 to 2004	% Change 2003 to 2004
Northshore Site							
	2000	2001	2002	2003	2004		
Less Than 18				1	2	1	50.0%
18-19				96	91	-5	-5.5%
20-21				179	262	83	31.7%
22-24				173	218	45	20.6%
25-29				172	206	34	16.5%
30-34				116	186	70	37.6%
35-39				81	135	54	40.0%
40-49				121	181	60	33.1%
50-64				32	33	1	3.0%
65 and Over				7	3	-4	-133.3%
Total				978	1,317	339	25.7%

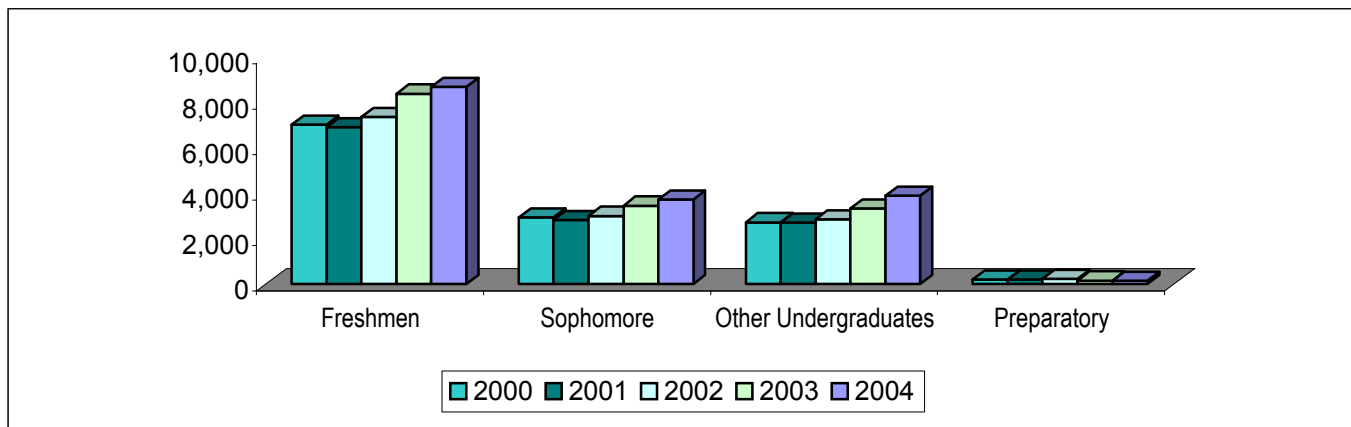
Spring Enrollment History 2000-2004 by Admission Status

College Wide						Number Change 2000 to 2004	% Change 2000 to 2004
	2000	2001	2002	2003	2004		
First-Time Freshmen	1,546	1,350	1,533	1,473	1,648	102	6.2%
Transfer Student	994	1,074	1,061	1,319	1,200	206	17.2%
Continuing Students	9,172	9,087	9,586	11,191	12,225	3,053	25.0%
Readmitted Students	1,102	1,094	1,249	1,327	1,311	209	15.9%
Exchange Students	88	71	41	62	58	-30	-51.7%
Total	12,902	12,676	13,470	15,372	16,442	3,540	21.5%



Spring Enrollment History 2000-2004 by Classification

College Wide						Number Change 2000 to 2004	% Change 2000 to 2004
	2000	2001	2002	2003	2004		
Freshmen	7,019	6,923	7,360	8,399	8,687	1,668	19.2%
Sophomore	2,949	2,826	3,011	3,465	3,726	777	20.9%
Other Undergraduates	2,729	2,728	2,860	3,343	3,890	1,161	29.8%
Preparatory	205	199	239	165	139	-66	-47.5%
Total	12,902	12,676	13,470	15,372	16,442	3,540	21.5%



**Spring Enrollment History 2000-2004
Admission Status by Campus**

						Number Change	%
City Park Campus							
	2000	2001	2002	2003	2004	2000 to 2004	2000 to 2004
First-Time Freshmen	1,322	1,132	1,226	1,040	1,155	-167	-14.5%
Transfer Student	808	909	887	1,000	835	27	3.2%
Continuing Students	7,271	7,124	7,480	8,054	8,371	1,100	13.1%
Readmitted Students	809	866	985	924	897	88	9.8%
Exchange Students	79	69	38	46	48	-31	-64.6%
Total	10,289	10,100	10,616	11,064	11,306	1,017	9.0%

						Number Change	%
West Bank Campus							
	2000	2001	2002	2003	2004	2000 to 2004	2000 to 2004
First-Time Freshmen	224	217	294	272	315	91	28.9%
Transfer Student	165	144	153	148	193	28	14.5%
Continuing Students	1,496	1,545	1,665	2,024	2,244	748	33.3%
Readmitted Students	258	203	221	268	269	11	4.1%
Exchange Students	9	2	3	16	10	1	10.0%
Total	2,152	2,111	2,336	2,728	3,031	879	29.0%

						Number Change	%
Charity School of Nursing							
	2000	2001	2002	2003	2004	2000 to 2004	2000 to 2004
First-Time Freshmen	0	1	13	0	7	7	100.0%
Transfer Student	21	21	21	15	17	-4	-23.5%
Continuing Students	405	418	441	541	704	299	42.5%
Readmitted Students	35	25	43	46	60	25	41.7%
Exchange Students	0	0	0	0	0	0	0.0%
Total	461	465	518	602	788	327	41.5%

						Number Change	%
Northshore Site							
	2000	2001	2002	2003	2004	2003 to 2004	2003 to 2004
First-Time Freshmen	/	/	/	161	171	10	5.8%
Transfer Student	/	/	/	156	155	-1	-0.6%
Continuing Students	/	/	/	572	906	334	36.9%
Readmitted Students	/	/	/	89	85	-4	-4.7%
Exchange Students	/	/	/	0	0	0	0.0%
Total	/	/	/	978	1,317	339	25.7%

Spring Enrollment History 2000-2004 by Classification by Campus

						Number Change 2000 to 2004	% Change 2000 to 2004
City Park Campus	2000	2001	2002	2003	2004		
Freshmen	5,711	5,610	5,915	6,036	6,014	303	5.0%
Sophomore	2,352	2,273	2,353	2,485	2,560	208	8.1%
Other Undergraduates	2,023	2,019	2,115	2,401	2,600	577	22.2%
Preparatory	203	198	233	142	132	-71	-53.8%
Total	10,289	10,100	10,616	11,064	11,306	1,017	9.0%

						Number Change 2000 to 2004	% Change 2000 to 2004
West Bank Campus	2000	2001	2002	2003	2004		
Freshmen	1,299	1,302	1,414	1,609	1,761	462	26.2%
Sophomore	516	481	565	714	767	251	32.7%
Other Undergraduates	336	327	354	405	501	165	32.9%
Preparatory	1	1	3	0	2	1	50.0%
Total	2,152	2,111	2,336	2,728	3,031	879	29.0%

						Number Change 2000 to 2004	% Change 2000 to 2004
Charity School of Nursing	2000	2001	2002	2003	2004		
Freshmen	9	11	31	18	23	14	60.9%
Sophomore	81	72	93	102	109	28	25.7%
Other Undergraduates	370	382	391	481	656	286	43.6%
Preparatory	1	0	3	1	0	-1	0.0%
Total	461	465	518	602	788	327	41.5%

						Number Change 2003 to 2004	% Change 2003 to 2004
Northshore Site	2000	2001	2002	2003	2004		
Freshmen				736	889	153	17.2%
Sophomore				164	290	126	43.4%
Other Undergraduates				56	133	77	57.9%
Preparatory				22	5	339	0.0%
Total				978	1,317	339	25.7%

Spring Enrollment History 2000-2004 by Full/Part Time Status, Headcount, FTE, SCH

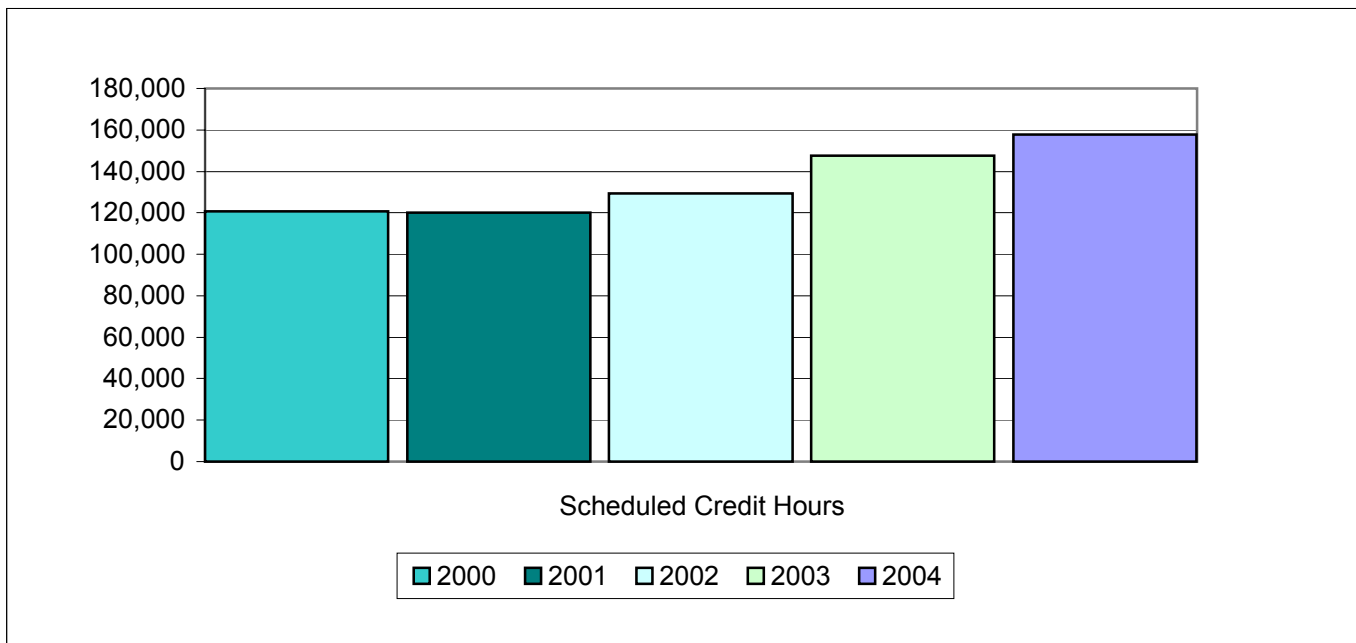
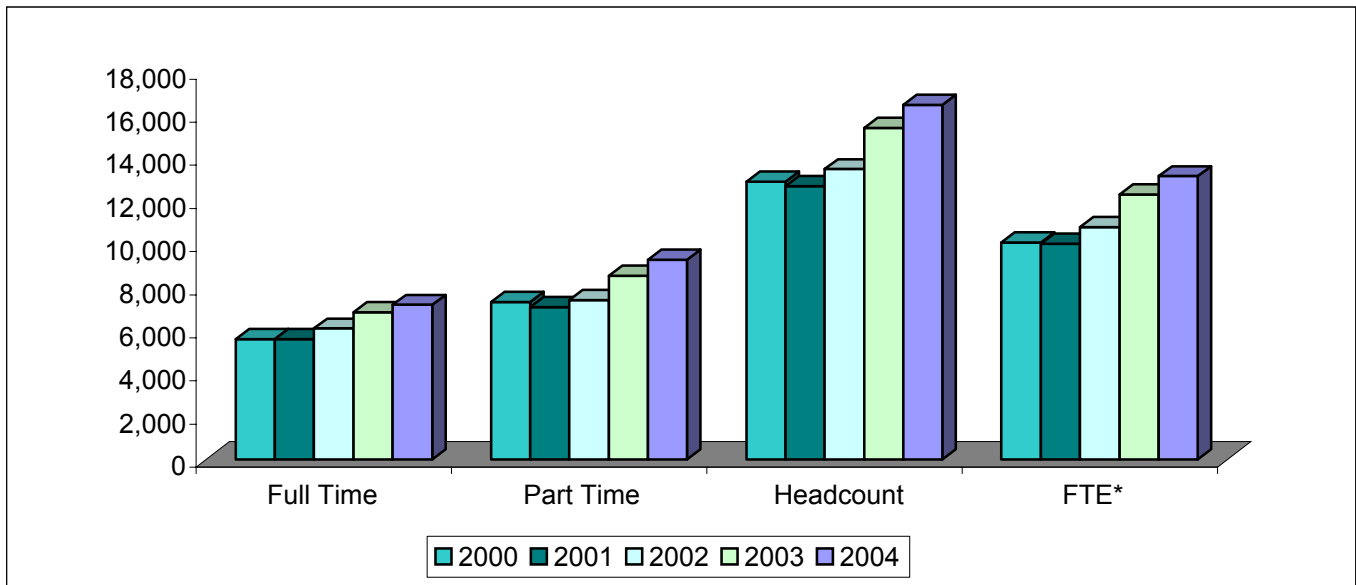
College Wide	2000	2001	2002	2003	2004
Full Time	5,581	5,593	6,076	6,836	7,174
Part Time	7,321	7,083	7,394	8,536	9,268
Headcount	12,902	12,676	13,470	15,372	16,442
SCH	120,695	120,007	129,395	147,549	157,714
FTE* (12 hours)	10,058	10,001	10,783	12,296	13,143
FTE** (15 hours)	8,046	8,000	8,626	9,837	10,514

Number Change 2000 to 2004
1,593
1,947
3,540
37,019
3,085
2,468

% Change 2000 to 2004
22.2%
21.0%
21.5%
23.5%
23.5%
23.5%

* FTE is calculated by dividing schedule credit hours by 12.

** FTE is calculated by dividing schedule credit hours by 15.



**Spring Enrollment History 2000-2004 by
Full/Part Time Status, Headcount, FTE, SCH**

						Number Change 2000 to 2004	% Change 2000 to 2004
City Park Campus	2000	2001	2002	2003	2004		
Full Time	4,658	4,665	4,969	5,123	5,176	518	10.0%
Part Time	5,631	5,435	5,647	5,941	6,130	499	8.1%
Headcount	10,289	10,100	10,616	11,064	11,306	1,017	9.0%
SCH	97,355	96,944	102,920	107,584	109,811	12,456	11.3%
FTE* (12 hours)	8,113	8,079	8,577	8,965	9,151	1,038	11.3%
FTE** (15 hours)	6,490	6,463	6,861	7,172	7,321	830	11.3%

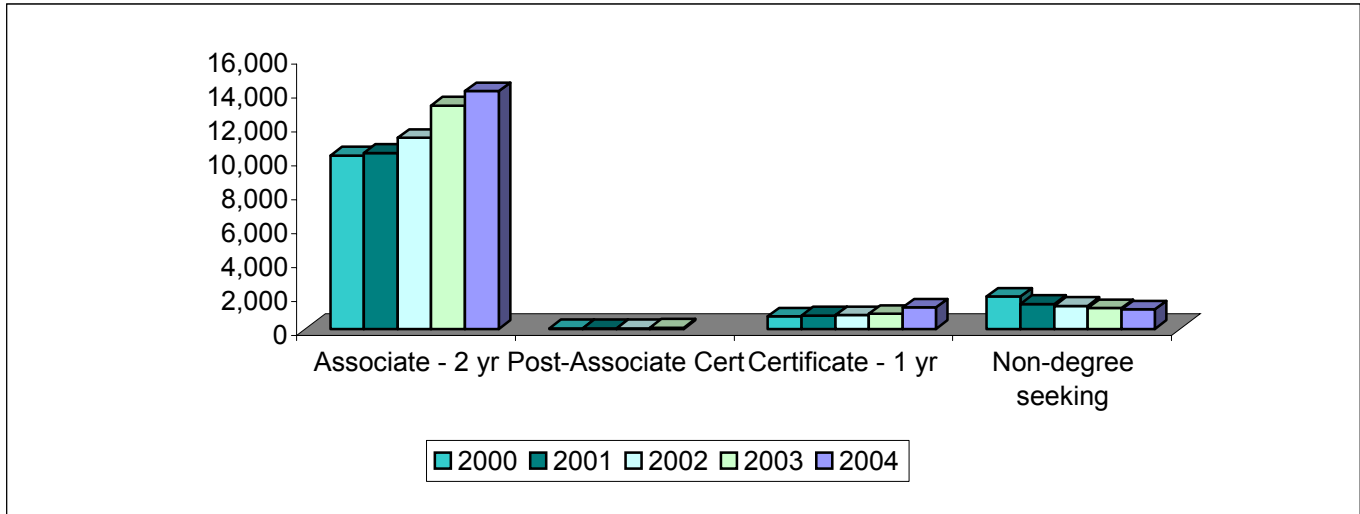
						Number Change 2000 to 2004	% Change 2000 to 2004
West Bank Campus	2000	2001	2002	2003	2004		
Full Time	793	795	989	1,174	1,270	477	37.6%
Part Time	1,359	1,316	1,347	1,554	1,761	402	22.8%
Headcount	2,152	2,111	2,336	2,728	3,031	879	29.0%
SCH	18,663	18,373	21,450	25,284	28,084	9,421	33.5%
FTE* (12 hours)	1,555	1,531	1,788	2,107	2,340	785	33.5%
FTE** (15 hours)	1,244	1,225	1,430	1,686	1,872	628	33.5%

						Number Change 2000 to 2004	% Change 2000 to 2004
Charity School of Nursing	2000	2001	2002	2003	2004		
Full Time	130	133	118	157	225	95	42.2%
Part Time	331	332	400	445	563	232	41.2%
Headcount	461	465	518	602	788	327	41.5%
SCH	4,677	4,690	5,025	6,051	8,008	3,331	41.6%
FTE* (12 hours)	390	391	419	504	667	278	41.6%
FTE** (15 hours)	312	313	335	403	534	222	41.6%

						Number Change 2003 to 2004	% Change 2003 to 2004
Northshore	2000	2001	2002	2003	2004		
Full Time				382	503	121	24.1%
Part Time				596	814	218	26.8%
Headcount				978	1,317	339	25.7%
SCH				8,630	11,811	3,181	26.9%
FTE* (12 hours)				719	984	984	100.0%
FTE** (15 hours)				575	787	3,181	0.0%

Spring Enrollment History 2000-2004 by Award Sought

						Number Change	% Change
College Wide	2000	2001	2002	2003	2004	2000 to 2004	2000 to 2004
Associate - 2 yr	10,217	10,385	11,267	13,178	14,019	3,802	27.1%
Post-Associate Cert	38	32	46	73		N/A	N/A
Certificate - 1 yr	741	794	809	891	1,267	526	41.5%
Non-degree seeking	1,906	1,465	1,348	1,230	1,156	-750	-64.9%
Total	12,902	12,676	13,470	15,372	16,442	3,540	21.5%



Spring Enrollment History 2000-2004 by Award Sought by Campus

						Number Change	% Change
City Park Campus	2000	2001	2002	2003	2004	2000 to 2004	2000 to 2004
Associate - 2 yr	7,940	8,142	8,672	9,294	9,457	1,517	16.0%
Post-Associate Cert	35	28	41	63		N/A	N/A
Certificate - 1 yr	647	679	679	707	895	248	27.7%
Non-degree seeking	1,667	1,251	1,224	1,000	954	-713	-74.7%
Total	10,289	10,100	10,616	11,064	11,306	1,017	9.0%

						Number Change	% Change
West Bank Campus	2000	2001	2002	2003	2004	2000 to 2004	2000 to 2004
Associate - 2 yr	1,844	1,804	2,121	2,480	2,672	828	31.0%
Post-Associate Cert	3	4	5	7		N/A	N/A
Certificate - 1 yr	67	89	105	113	211	144	68.2%
Non-degree seeking	238	214	105	128	148	-90	-60.8%
Total	2,152	2,111	2,336	2,728	3,031	879	29.0%

Spring Enrollment History 2000-2004 by Award Sought by Campus (cont.)

						Number Change 2000 to 2004	% Change 2000 to 2004
Charity School of Nursing							
	2000	2001	2002	2003	2004		
Associate - 2 yr	433	439	474	567	714	281	39.4%
Post-Associate Cert	0	0	0	0		N/A	N/A
Certificate - 1 yr	27	26	25	29	73	46	63.0%
Non-degree seeking	1	0	19	6	1	0	0.0%
Total	461	465	518	602	788	327	41.5%

						Number Change 2003 to 2004	% Change 2003 to 2004
Northshore Site							
	2000	2001	2002	2003	2004		
Associate - 2 yr				837	1,176	339	28.8%
Post-Associate Cert				3		N/A	N/A
Certificate - 1 yr				42	88	46	52.3%
Non-degree seeking				96	53	339	0.0%
Total				978	1,317	339	25.7%

Spring Enrollment History 2000-2004 by Division

						Number Change 2000 to 2004	% Change 2000 to 2004
	2000	2001	2002	2003*	2004		
City Park Campus							
Arts & Humanities	2,441	2,482	2,159	2,274	2,400	-41	-1.7%
Allied Health	1,504	1,410	1,371	1,778	1,925	421	21.9%
Basic Education-CP*	1,064	1,363	2,197	2,228	2,020	956	47.3%
Business Studies	1,609	1,459	1,425	1,457	1,618	9	0.6%
Communications	368	357	344	317	333	-35	-10.5%
Community & Workforce Development	1,157	923	993	724	208	-949	-456.3%
Technology	1,055	1,000	852	594	828	-227	-27.4%
Science & Math	1,085	1,106	1,275	1,692	1,974	889	45.0%
Campus Total	10,283	10,100	10,616	11,064	11,306	1,023	9.0%
West Bank Campus							
Arts & Sciences	1,279	1,206	1,190	1,570	1,782	503	28.2%
Business & Technology	573	483	468	519	557	-16	-2.9%
Basic Education-WBC	300	422	678	639	692	392	56.6%
Campus Total	2,152	2,111	2,336	2,728	3,031	879	29.0%
Nursing	461	465	518	602	788	327	41.5%
Northshore Site**							
Covington				165	374	209	55.9%
Slidell				813	943	130	13.8%
Site Total	0	0	0	978	1,317	N/A	N/A
College Total	12,896	12,676	13,470	15,372	16,442	3,546	21.6%

* In Spring 2003 and 200, students who tested out of remediation the prior year have not been moved out of Basic Education. Basic Education contains non-degree seeking students and some students that should have been moved.

** Northshore enrollments were previously reported as a part of City Park.

Spring Enrollment History 2000-2004 by Program

College Wide						Number Change 2000 to 2004	% Change 2000 to 2004
	2000	2001	2002	2003	2004		
Accounting	419	451	511	497	492	73	14.8%
Administrative Office Tech	169	160	143	131	141	-28	-19.9%
Air Conditioning & Refrigeration	48	59	51	37	3	-45	0.0%
Aircraft Airframe Maintenance Technology	2					N/A	N/A
American Sign Language Studies	31	39	33	45	48	17	35.4%
Business Administration	981	854	922	1,045	1,077	96	8.9%
Business Training	51	42	51	17	5	-46	-920.0%
Carpentry	26	24	20	31	25	-1	-4.0%
Certified Nurse Assistant			23	15	2	2	100.0%
CET-Architectural Engineering	88	102	94	112	112	24	21.4%
CET-Civil Construction Technology	42	60	41	50	61	19	31.1%
CET-Construction Management	11	18	34	23	32	21	65.6%
Computer Information Technology	694	614	592	603	533	-161	-30.2%
Computer Network Technology	258	276	272	261	245	-13	-5.3%
Computer Repair (Certificate)	68	70	49	36	39	-29	-74.4%
Construction Management Technology	14	18	8	16	13	-1	-7.7%
Criminal Justice	449	508	468	540	585	136	23.2%
Culinary Arts	211	186	193	160	192	-19	-9.9%
Dental Hygiene	93	84	62	26	19	-74	-389.5%
Dental Laboratory Technology	22	18	23	18	31	9	29.0%
Diagnostic Medical Sonography	37	32	46	73	95	58	61.1%
Dietetic Technician	48	37	35	55	58	10	17.2%
Drafting (Certificate)	67	40	38	33	20	-47	-235.0%
Drafting (ITDR)	50	41	34	65	80	30	37.5%
Early Childhood Education	812	741	684	754	833	21	2.5%
Educational Interpreting for the Deaf	79	73	76	78	55	-24	-43.6%
Electrical Construction Technician	41	37	32	11	17	-24	-141.2%
Electrical Electronics Engineering Technology	124	119	137	144	149	25	16.8%
Electronics Repair	23	27	15	12	14	-9	-64.3%
Emergency Medical Technology	115	89	86	116	98	-17	-17.3%
English as a Second Language	291	276	274	238	266	-25	-9.4%
EST-Biomedical Equip Repair Technology	44	28	26	48	51	7	13.7%
EST-Computer Repair Technology	38	27	41	60	47	9	19.1%
EST-Electronics Repair Technology	10	24	23	37	30	20	66.7%
Fine Arts	113	120	155	165	174	61	35.1%
Fire Protection Technology	417	179	219	189	386	-31	-8.0%
Food Service Careers	4	5	23	25	17	13	76.5%
Funeral Service Education	130	135	135	167	163	33	20.2%
General Science	261	207	244	262	330	69	20.9%
General Studies	1,967	2,171	1,841	1,989	1,963	-4	-0.2%
Health Information Technology	152	148	182	178	189	37	19.6%
Horticulture		20	29	42	48	48	100.0%
Hospitality	110	111	108	98	87	-23	-26.4%
Interior Design	142	152	165	194	211	69	32.7%
IT- Machine Tool Technology	7	4	5	16	20	13	65.0%

Spring Enrollment History 2000-2004 by Program (cont.)

College Wide, continued						Number Change 2000 to 2004	% Change 2000 to 2004
	2000	2001	2002	2003	2004		
Legal Secretary	10	9	47	75	99	89	89.9%
Machine Tool Technology (Certificate)*	10	10	16			N/A	N/A
Management	181	176	222	242	249	68	27.3%
Massage Therapy					17	N/A	N/A
Medical Coding - Certificate					8	8	100.0%
Medical Laboratory Technician	110	77	105	126	136	26	19.1%
Motor Vehicle Technology	145	129	108	127	205	60	29.3%
Music	82	91	109	114	151	69	45.7%
Nuclear Medicine Technology	17	14	17	40	35	18	51.4%
Nursing	434	439	474	568	715	281	39.3%
Occupational Therapy Assistant	94	69	70	40	50	-44	-88.0%
Ophthalmic Medical Assistant	25	30	17	15	15	-10	-66.7%
Pastry Art - Certificate					1	1	100.0%
Performance & Media Arts	147	147	172	193	208	61	29.3%
Pharmacy Technician	24	84	115	177	245	221	90.2%
Physical Therapist Assisting	319	236	276	323	304	-15	-4.9%
Practical Nursing	31	67	110	163	251	220	87.6%
Pre-Nursing	1,399	1,520	2,043	2,689	3,032	1,633	53.9%
Radiologic Technology	457	541	715	1,118	1,308	851	65.1%
Radiation Therapy (Certificate)					1	1	100.0%
Respiratory Care Technology	175	162	161	169	166	-9	-5.4%
Safety & Health Technology	48	45	40	31	26	-22	-84.6%
Surgical Technology	193	200	199	242	234	41	17.5%
Visual Communications*	210	182	206	206	196	-14	-7.1%
Welding Technology	25	21	5	2	0	-25	0.0%
Workforce	7	1	0	0	0	-7	0.0%
Total	12,902	12,676	13,470	15,372	16,708	3,806	22.8%

City Park Campus						Number Change 2000 to 2004	% Change 2000 to 2004
	2000	2001	2002	2003	2004		
Accounting	337	367	404	346	332	-5	-1.5%
Administrative Office Technology	125	119	105	95	95	-30	-31.6%
Air Conditioning & Refrigeration	47	59	50	35	3	-44	0.0%
Aircraft Airframe Maintenance Technology	2	0	0	0	0	-2	0.0%
American Sign Language Studies	26	37	31	39	32	6	18.8%
Business Administration	797	697	739	747	730	-67	-9.2%
Business Training	48	33	42	12	3	-45	0.0%
Carpentry	26	23	19	29	24	-2	-8.3%
Certified Nurse Assistant	0	0	4	10	1	1	100.0%
CET-Architectural Technology	82	91	81	98	98	16	16.3%
CET-Civil Construction Technology	35	47	33	37	45	10	22.2%
CET-Construction Management	9	18	29	19	26	17	65.4%
Computer Information Technology	513	482	481	443	369	-144	-39.0%

City Park Campus, continued						Number Change 2000 to 2004	% Change 2000 to 2004
	2000	2001	2002	2003	2004		
Computer Network Technology	236	240	233	197	190	-46	-24.2%
Computer Repair (Certificate)	59	60	42	34	32	-27	-84.4%
Construction Management Technology	13	17	6	11	10	-3	-30.0%
Criminal Justice	349	404	369	387	393	44	11.2%
Culinary Arts	205	178	184	143	181	-24	-13.3%
Dental Hygiene	62	64	43	14	9	-53	-588.9%
Dental Laboratory Technology	19	15	19	15	22	3	13.6%
Diagnostic Medical Sonography	35	28	41	63	82	47	57.3%
Dietetic Technician	41	37	34	47	43	2	4.7%
Drafting (Certificate)	53	26	25	19	15	-38	-253.3%
Drafting (ITDR)	33	29	25	47	56	23	41.1%
Early Childhood Education	598	554	515	511	523	-75	-14.3%
Educational Interpreting for the Deaf	66	60	68	69	44	-22	-50.0%
Electrical Construction Technician	39	34	28	10	16	-23	-143.8%
Electrical Electronics Engineering Technology	108	105	124	131	123	15	12.2%
Electronics Repair	23	24	11	11	14	-9	-64.3%
Emergency Medical Technology	109	85	79	93	80	-29	-36.3%
English as a Second Language	291	276	274	237	265	-26	-9.8%
EST-Biomedical Equip Repair Technology	41	26	24	45	49	8	16.3%
EST-Computer Repair Technology	32	21	36	49	36	4	11.1%
EST-Electronics Repair Technology	9	22	16	28	26	17	65.4%
Fine Arts	81	97	121	128	126	45	35.7%
Fire Protection Technology	412	176	215	162	351	-61	-17.4%
Food Service Careers	4	5	21	25	17	13	76.5%
Funeral Service Education	125	129	123	147	148	23	15.5%
General Science	218	166	201	196	243	25	10.3%
General Studies	1,469	1,621	1,366	1,315	1,344	-125	-9.3%
Health Information Technology	138	133	152	157	157	19	12.1%
Horticulture	0	20	28	41	46	46	100.0%
Hospitality	97	103	102	92	81	-16	-19.8%
Interior Design	131	141	153	176	191	60	31.4%
IT- Machine Tool Technology	5	2	3	14	18	13	72.2%
Legal Secretary	10	9	43	58	69	59	85.5%
Machine Tool Technology (Certificate)*	10	10	15			-10	N/A
Management	154	156	183	174	156	2	1.3%
Manufacturing	2	2	2	2	4	2	50.0%
Massage Therapy					0	N/A	N/A
Medical Coding - Certificate					8	8	N/A
Medical Laboratory Technician	96	70	91	108	115	19	16.5%
Motor Vehicle Technology	140	123	99	121	197	57	28.9%
Music	77	88	105	104	138	61	44.2%
Nuclear Medicine Technology	15	12	17	39	30	15	50.0%
Nursing						N/A	N/A
Occupational Therapy Assistant	78	59	64	24	32	-46	-143.8%
Ophthalmic Medical Assistant	20	26	14	15	14	-6	-42.9%

City Park Campus, continued					
	2000	2001	2002	2003	2004
Pastry Art - Certificate					1
Performance & Media Arts	135	135	157	166	171
Pharmacy Technician	21	75	101	138	188
Physical Therapist Assisting	275	192	217	248	231
Practical Nursing	4	41	80	96	108
Pre-Nursing	1,124	1,211	1,577	1,884	2,034
Radiologic Technology	410	489	630	845	903
Radiation Therapy (Certificate)					1
Respiratory Care Technology	148	135	131	139	123
Safety & Health Technology	41	37	38	30	24
Surgical Technology	178	181	174	191	166
Visual Communications*	178	157	174	156	163
Welding Technology	25	21	5	2	0
Workforce	0	0	0	0	0
Total	10,289	10,100	10,616	11,064	11,565

Number Change 2000 to 2004
1
36
167
-44
104
910
493
1
-25
-17
-12
-15
-25
0
1,276

% Change 2000 to 2004
100.0%
21.1%
88.8%
-19.0%
96.3%
44.7%
54.6%
100.0%
-20.3%
-70.8%
-7.2%
-9.2%
0.0%
0.0%
11.0%

*was Commercial Arts

West Bank Campus					
	2000	2001	2002	2003	2004
Accounting	82	84	107	95	108
Administrative Office Technology*	44	41	38	28	40
Air Conditioning & Refrigeration	1	0	1	2	0
Aircraft Airframe Maintenance Technology	0	0	0	0	0
American Sign Language Studies	4	2	2	2	5
Business Administration	184	157	183	203	235
Business Training	3	9	9	3	1
Carpentry	0	1	1	2	1
Certified Nurse Assistant	0	0	0	0	0
CET-Architectural Technology	6	11	13	11	7
CET-Civil Construction Technology	7	13	8	10	11
CET-Construction Management	2	0	5	4	4
Computer Information Technology	181	132	111	127	130
Computer Network Technology	22	36	39	57	39
Computer Repair (Certificate)	9	10	7	2	3
Construction Management Technology	1	1	2	5	3
Criminal Justice	100	104	99	130	157
Culinary Arts	6	8	9	7	9
Dental Hygiene	31	20	19	12	10
Dental Laboratory Technology	3	3	4	0	1
Diagnostic Medical Sonography	2	4	5	7	9
Dietetic Technician	7	0	1	6	8
Drafting (Certificate)	14	14	13	14	5
Drafting (ITDR)	17	12	9	16	19
Early Childhood Education	214	187	169	188	239
Educational Interpreting for the Deaf	14	13	8	6	8

Number Change 2000 to 2004
26
-4
-1
0
1
51
-2
1
0
1
4
2
-51
17
-6
2
57
3
-21
-2
7
1
-9
2
25
-6

% Change 2000 to 2004
24.1%
-10.0%
0.0%
0.0%
20.0%
21.7%
-200.0%
100.0%
0.0%
14.3%
36.4%
50.0%
-39.2%
43.6%
-200.0%
66.7%
36.3%
33.3%
-210.0%
-200.0%
77.8%
12.5%
-180.0%
10.5%
10.5%
-75.0%

West Bank Campus, continued						Number Change 2000 to 2004	% Change 2000 to 2004
	2000	2001	2002	2003	2004		
Electrical Construction Technician	2	3	4	1	1	-1	-100.0%
Electrical Electronics Engineering Technology	16	14	13	11	18	2	11.1%
Electronics Repair	0	3	4	1	0	0	0.0%
Emergency Medical Technology	6	4	7	6	11	5	45.5%
English as a Second Language	0	0	0	0	0	0	0.0%
EST-Biomedical Equip Repair Technology	3	2	2	1	0	-3	0.0%
EST-Computer Repair Technology	6	6	5	6	9	3	33.3%
EST-Electronics Repair Technology	1	2	7	8	4	3	75.0%
Fine Arts	32	23	34	32	43	11	25.6%
Fire Protection Technology	5	3	4	2	1	-4	-400.0%
Food Service Careers	0	0	2	0	0	0	0.0%
Funeral Service Education	5	6	12	19	15	10	66.7%
General Science	43	41	43	48	62	19	30.6%
General Studies	498	550	475	530	456	-42	-9.2%
Health Information Technology	14	15	30	15	19	5	26.3%
Horticulture	0	0	1	1	2	2	100.0%
Hospitality	13	8	6	5	5	-8	-160.0%
Interior Design	11	11	12	10	9	-2	-22.2%
IT- Machine Tool Technology	0	0	0	2	2	2	100.0%
Legal Secretary	0	0	4	15	23	23	100.0%
Machine Tool Technology (Certificate)*	0	0	1			0	0.0%
Management	27	20	39	41	63	36	57.1%
Massage Therapy					17	N/A	N/A
Medical Coding - Certificate					0	N/A	N/A
Medical Laboratory Technician	14	7	14	15	18	4	22.2%
Motor Vehicle Technology	12	7	9	5	8	-4	-50.0%
Music	5	3	4	6	8	3	37.5%
Nuclear Medicine Technology	2	2	0	1	2	0	0.0%
Nursing	0	0	0	0	0	0	0.0%
Occupational Therapy Assistant	16	10	6	11	8	-8	-100.0%
Ophthalmic Medical Assistant	5	4	3	0	0	-5	0.0%
Pastry Art - Certificate					0	N/A	N/A
Performance & Media Arts	12	12	15	21	29	17	58.6%
Pharmacy Technician	3	9	14	31	44	41	93.2%
Physical Therapist Assisting	44	44	59	60	52	8	15.4%
Practical Nursing	0	0	5	30	49	49	100.0%
Pre-Nursing	275	309	466	598	672	397	59.1%
Radiologic Technology	47	52	85	174	233	186	79.8%
Radiation Therapy (Certificate)					0	N/A	N/A
Respiratory Care Technology	27	27	30	22	34	7	20.6%
Safety & Health Technology	7	8	2	1	2	-5	-250.0%
Surgical Technology	15	19	25	24	44	29	65.9%
Visual Communications*	32	25	32	38	23	-9	-39.1%
Welding Technology	0	0	0	0	0	0	0.0%
Workforce	0	0	0	0	0	0	0.0%
Total	4,152	4,128	4,338	4,731	5,042	890	17.7%

*was Commercial Arts

Charity Campus					
	2000	2001	2002	2003	2004
Certified Nurse Assistant	0	0	19	5	1
Nursing	434	439	474	568	715
Practical Nursing	27	26	25	29	73
Total	461	465	518	602	789

Number Change
2000 to 2004
1
281
46
328

% Change
2000 to 2004
100.0%
39.3%
63.0%
41.6%

Northshore Site					
	2000	2001	2002	2003	2004
Accounting				56	52
Administrative Office Technology*				6	6
Air Conditioning & Refrigeration				0	0
Aircraft Airframe Maintenance Technology					
American Sign Language Studies				4	11
Business Administration				95	112
Business Training				2	1
Carpentry				0	0
Certified Nurse Assistant				0	0
CET-Architectural Technology				3	7
CET-Civil Construction Technology				3	5
CET-Construction Management				0	2
Computer Information Technology				33	34
Computer Network Technology				7	16
Computer Repair (Certificate)				0	4
Construction Management Technology				0	0
Criminal Justice				23	35
Culinary Arts				10	2
Dental Hygiene				0	0
Dental Laboratory Technology				3	8
Diagnostic Medical Sonography				3	4
Dietetic Technician				2	7
Drafting (Certificate)				0	0
Drafting (ITDR)				2	5
Early Childhood Education				55	71
Educational Interpreting for the Deaf				3	3
Electrical Construction Technician				0	0
Electrical Electronics Engineering Technology				2	8
Electronics Repair				0	0
Emergency Medical Technology				17	7
English as a Second Language				1	1
EST-Biomedical Equip Repair Technology				2	2
EST-Computer Repair Technology				5	2
EST-Electronics Repair Technology				1	0
Fine Arts				0	5
Fire Protection Technology				25	34
Food Service Careers				5	0

Number Change
2003 to 2004
-4
0
N/A
N/A
7
17
-1
0
4
2
2
1
9
4
0
12
-8
0
5
1
5
0
3
16
0
0
6
0
-10
0
0
-3
-1
5
9
-5

% Change
2003 to 2004
-7.7%
0.0%
N/A
N/A
63.6%
15.2%
-100.0%
0.0%
57.1%
40.0%
100.0%
2.9%
56.3%
100.0%
0.0%
34.3%
-400.0%
0.0%
62.5%
25.0%
71.4%
0.0%
60.0%
22.5%
0.0%
0.0%
75.0%
0.0%
-142.9%
0.0%
0.0%
-150.0%
0.0%
100.0%
26.5%
0.0%

Northshore Site, continued						Number Change 2003 to 2004	% Change 2003 to 2004
	2000	2001	2002	2003	2004		
Funeral Service Education				1	0	-1	0.0%
General Science				18	25	7	28.0%
General Studies				144	163	19	11.7%
Health Information Technology				6	13	7	53.8%
Horticulture				0	0	0	0.0%
Hospitality				1	1	0	0.0%
Interior Design				8	11	3	27.3%
IT- Machine Tool Technology				0	0	0	0.0%
Legal Secretary				2	7	5	71.4%
Machine Tool Technology				0	0	0	0.0%
Machine Tool Technology (Certificate)*						N/A	N/A
Management				27	30	3	10.0%
Massage Therapy					0	0	0.0%
Medical Coding - Certificate					0	0	0.0%
Medical Laboratory Technician				3	3	0	0.0%
Motor Vehicle Technology				1	0	-1	0.0%
Music				4	5	1	20.0%
Nuclear Medicine Technology				0	3	3	100.0%
Nursing				0	0	0	0.0%
Occupational Therapy Assistant				5	10	5	50.0%
Ophthalmic Medical Assistant				0	1	1	100.0%
Pastry Art - Certificate					0	0	0.0%
Performance & Media Arts				6	8	2	25.0%
Pharmacy Technician				8	13	5	38.5%
Physical Therapist Assisting				15	21	6	28.6%
Practical Nursing				8	21	13	61.9%
Pre-Nursing				207	326	119	36.5%
Radiation Therapy (Certificate)					0	0	0.0%
Radiologic Technology				99	172	73	42.4%
Respiratory Care Technology				8	9	1	11.1%
Safety & Health Technology				0	0	0	0.0%
Surgical Technology				27	24	-3	-12.5%
Visual Communications*				12	10	-2	-20.0%
Welding Technology				0	0	0	0.0%
Workforce				0	0	0	0.0%
Total				2,981	3,324	343	10.3%

**Spring Enrollment History 2000-2004 by Program
Ranked by Student Total**

College Wide						Number Change 2000 to 2004	% Change 2000 to 2004
	2000	2001	2002	2003	2004		
Pre-Nursing	1,399	1,520	2,043	2,689	3,032	1,633	53.9%
General Studies	1,967	2,171	1,841	1,989	1,963	-4	-0.2%
Radiologic Technology	457	541	715	1,118	1,308	851	65.1%
Business Administration	981	854	922	1,045	1,077	96	8.9%
Early Childhood Education	812	741	684	754	833	21	2.5%
Nursing	434	439	474	568	715	281	39.3%
Criminal Justice	449	508	468	540	585	136	23.2%

**Spring Enrollment History 2000-2004 by Program
Ranked by Student Total (cont.)**

College Wide, cont.						Number Change 2000 to 2004	% Change 2000 to 2004
	2000	2001	2002	2003	2004		
Computer Information Technology	694	614	592	603	533	-161	-30.2%
Accounting	419	451	511	497	492	73	14.8%
Fire Protection Technology	417	179	219	189	386	-31	-8.0%
General Science	261	207	244	262	330	69	20.9%
Physical Therapist Assisting	319	236	276	323	304	-15	-4.9%
English as a Second Language	291	276	274	238	266	-25	-9.4%
Practical Nursing	31	67	110	163	251	220	87.6%
Management	181	176	222	242	249	68	27.3%
Computer Network Technology	258	276	272	261	245	-13	-5.3%
Pharmacy Technician	24	84	115	177	245	221	90.2%
Surgical Technology	193	200	199	242	234	41	17.5%
Interior Design	142	152	165	194	211	69	32.7%
Performance & Media Arts	147	147	172	193	208	61	29.3%
Motor Vehicle Technology	145	129	108	127	205	60	29.3%
Visual Communications*	210	182	206	206	196	-14	-7.1%
Culinary Arts	211	186	193	160	192	-19	-9.9%
Health Information Technology	152	148	182	178	189	37	19.6%
Fine Arts	113	120	155	165	174	61	35.1%
Respiratory Care Technology	175	162	161	169	166	-9	-5.4%
Funeral Service Education	130	135	135	167	163	33	20.2%
Music	82	91	109	114	151	69	45.7%
Electrical Electronics Engineering Technology	124	119	137	144	149	25	16.8%
Administrative Office Tech	169	160	143	131	141	-28	-19.9%
Medical Laboratory Technician	110	77	105	126	136	26	19.1%
CET-Architectural Engineering	88	102	94	112	112	24	21.4%
Legal Secretary	10	9	47	75	99	89	89.9%
Emergency Medical Technology	115	89	86	116	98	-17	-17.3%
Diagnostic Medical Sonography	37	32	46	73	95	58	61.1%
Hospitality	110	111	108	98	87	-23	-26.4%
Drafting (ITDR)	50	41	34	65	80	30	37.5%
CET-Civil Construction Technology	42	60	41	50	61	19	31.1%
Dietetic Technician	48	37	35	55	58	10	17.2%
Educational Interpreting for the Deaf	79	73	76	78	55	-24	-43.6%
EST-Biomedical Equip Repair Technology	44	28	26	48	51	7	13.7%
Occupational Therapy Assistant	94	69	70	40	50	-44	-88.0%
American Sign Language Studies	31	39	33	45	48	17	35.4%
Horticulture		20	29	42	48	48	100.0%
EST-Computer Repair Technology	38	27	41	60	47	9	19.1%
Computer Repair (Certificate)	68	70	49	36	39	-29	-74.4%
Nuclear Medicine Technology	17	14	17	40	35	18	51.4%
CET-Construction Management	11	18	34	23	32	21	65.6%
Dental Laboratory Technology	22	18	23	18	31	9	29.0%
EST-Electronics Repair Technology	10	24	23	37	30	20	66.7%
Safety & Health Technology	48	45	40	31	26	-22	-84.6%
Carpentry	26	24	20	31	25	-1	-4.0%

**Spring Enrollment History 2000-2004 by Program
Ranked by Student Total (cont.)**

College Wide, cont.						Number Change 2000 to 2004	% Change 2000 to 2004
	2000	2001	2002	2003	2004		
Drafting (Certificate)	67	40	38	33	20	-47	-235.0%
IT- Machine Tool Technology	7	4	5	16	20	13	65.0%
Dental Hygiene	93	84	62	26	19	-74	-389.5%
Electrical Construction Technician	41	37	32	11	17	-24	-141.2%
Food Service Careers	4	5	23	25	17	13	76.5%
Massage Therapy					17	N/A	N/A
Ophthalmic Medical Assistant	25	30	17	15	15	-10	-66.7%
Electronics Repair	23	27	15	12	14	-9	-64.3%
Construction Management Technology	14	18	8	16	13	-1	-7.7%
Medical Coding - Certificate					8	8	100.0%
Business Training	51	42	51	17	5	-46	-920.0%
Air Conditioning & Refrigeration	48	59	51	37	3	-45	0.0%
Certified Nurse Assistant			23	15	2	2	100.0%
Pastry Art - Certificate					1	1	100.0%
Radiation Therapy (Certificate)					1	1	100.0%
Welding Technology	25	21	5	2	0	-25	0.0%
Workforce	7	1	0	0	0	-7	0.0%
Aircraft Airframe Maintenance Technology	2					N/A	N/A
Machine Tool Technology (Certificate)*	10	10	16			N/A	N/A

*was Commercial Arts

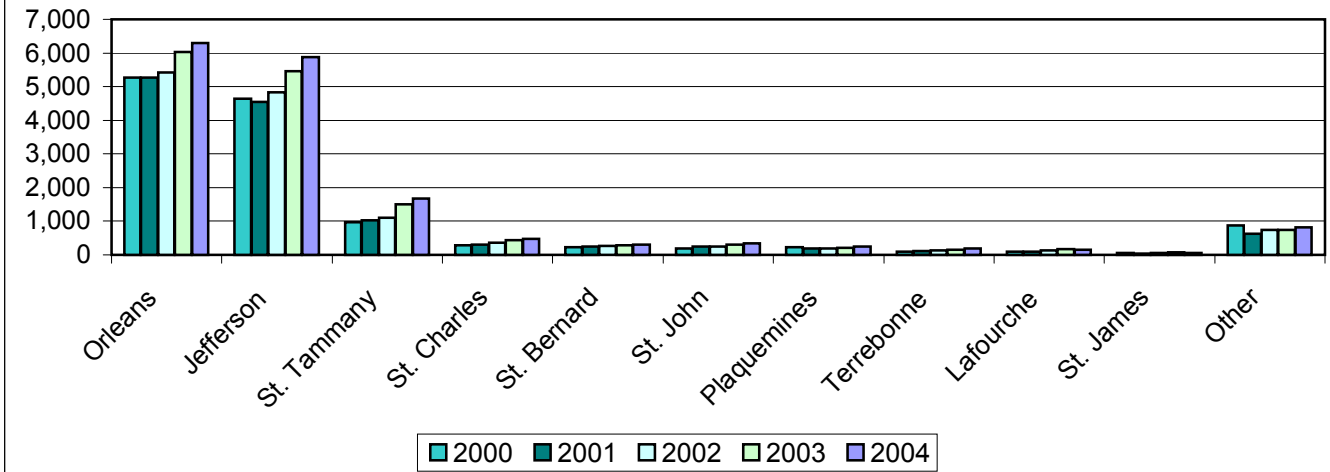
**was Office Careers

***was Manual Communication

Spring Enrollment History 2000-2004 by Parish

College Wide						Number Change 2000 to 2004	% Change 2000 to 2004
	2000	2001	2002	2003	2004		
Orleans	5,266	5,262	5,417	6,030	6,303	1,037	16.5%
Jefferson	4,637	4,541	4,833	5,467	5,886	1,249	21.2%
St. Tammany	962	1,022	1,102	1,500	1,669	707	42.4%
St. Charles	283	301	355	428	480	197	41.0%
St. Bernard	237	240	266	292	304	67	22.0%
St. John	193	239	243	308	343	150	43.7%
Plaquemines	219	186	188	207	250	31	12.4%
Terrebonne	93	119	142	159	188	95	50.5%
Lafourche	91	103	127	165	145	54	37.2%
St. James	51	41	64	67	56	5	8.9%
Other	870	622	733	749	818	-52	-6.4%
Total	12,902	12,676	13,470	15,372	16,442	3,540	21.5%

**Enrollment by Parish
College Wide**



City Park					
	2000	2001	2002	2003	2004
Orleans	4,546	4,510	4,625	5,188	5,292
Jefferson	3,128	3,067	3,156	3,453	3,629
St. Tammany	903	962	1,044	499	372
St. Charles	264	274	327	390	437
St. Bernard	195	197	209	229	238
St. John	173	223	227	291	319
Plaquemines	46	38	48	54	57
Terrebonne	82	111	136	145	168
Lafourche	83	97	118	151	127
St. James	50	39	61	66	54
Other	819	582	665	598	613
Total	10,289	10,100	10,616	11,064	11,306

Number Change 2000 to 2004
746
501
-531
173
43
146
11
86
44
4
-206
1,017

% Change 2000 to 2004
14.1%
13.8%
-142.7%
39.6%
18.1%
45.8%
19.3%
51.2%
34.6%
7.4%
-33.6%
9.0%

West Bank					
	2000	2001	2002	2003	2004
Orleans	584	606	605	672	763
Jefferson	1,333	1,296	1,491	1,767	1,922
St. Tammany	4	5	7	9	6
St. Charles	10	19	20	22	27
St. Bernard	6	5	9	12	16
St. John	9	4	3	4	5
Plaquemines	169	143	134	142	181
Terrebonne	4	1	3	10	15
Lafourche	3	5	6	7	9
St. James	0	0	2	1	1
Other	30	27	56	82	86
Total	2,152	2,111	2,336	2,728	3,031

Number Change 2000 to 2004
179
589
2
17
10
-4
12
11
6
1
56
879

% Change 2000 to 2004
23.5%
30.6%
33.3%
63.0%
62.5%
-80.0%
6.6%
73.3%
66.7%
100.0%
65.1%
29.0%

Charity School of Nursing						Number Change 2000 to 2004	% Change 2000 to 2004
	2000	2001	2002	2003	2004		
Orleans	136	146	187	162	234	98	41.9%
Jefferson	176	178	186	242	319	143	44.8%
St. Tammany	55	55	51	88	102	47	46.1%
St. Charles	9	8	8	14	13	4	30.8%
St. Bernard	36	38	48	49	48	12	25.0%
St. John	11	12	13	13	19	8	42.1%
Plaquemines	4	5	6	11	12	8	66.7%
Terrebonne	7	7	3	2	4	-3	-75.0%
Lafourche	5	1	3	6	8	3	37.5%
St. James	1	2	1	0	1	0	0.0%
Other	21	13	12	15	28	7	25.0%
Total	461	465	518	602	788	327	41.5%

Slidell/Northshore						Number Change 2000 to 2004	% Change 2000 to 2004
	2000	2001	2002	2003	2004		
Orleans				8	14	N/A	N/A
Jefferson				5	16	N/A	N/A
St. Tammany				904	1,189	N/A	N/A
St. Charles				2	3	N/A	N/A
St. Bernard				2	2	N/A	N/A
St. John				0	0	N/A	N/A
Plaquemines				0	0	N/A	N/A
Tangipahoa				16	35	N/A	N/A
Terrebonne				2	1	N/A	N/A
Lafourche				0	1	N/A	N/A
St. James				0	0	N/A	N/A
Washington				19	38	N/A	N/A
Other				20	18	N/A	N/A
Total				978	1,317	N/A	N/A

Spring Enrollment History 2000-2004 by Top "Feeder" High Schools

College Wide						Number Change 2000 to 2004	% Change 2000 to 2004
	2000	2001	2002	2003	2004		
Alcee Fortier	26	18	36	21	29	3	10.3%
Alfred Lawless Senior	15	8	8	7	17	2	11.8%
Alfred T. Bonnabel	27	14	17	26	31	4	12.9%
Andrew Jackson Fundamental	4	1	1	4	5	1	20.0%
Archbishop Blenk	3	1	7	5	3	0	0.0%
Archbishop Chapelle	5	6	4	7	4	-1	-25.0%
Archbishop Rummel	9	8	6	4	5	-4	-80.0%
Archbishop Shaw	1	6	4	5	5	4	80.0%
Booker T. Washington	9	9	11	19	10	1	10.0%

**Spring Enrollment History 2000-2004
by Top "Feeder" High Schools, (cont.)**

College Wide						Number Change 2000 to 2004	% Change 2000 to 2004
	2000	2001	2002	2003	2004		
Brother Martin	5	5	6	5	6	1	16.7%
Central Lafourche	5	1	4	5	12	7	58.3%
Chalmette	4	2	3	5	4	0	0.0%
Covington	2	3	2	12	18	16	88.9%
Dela Salle	7	2	4	7	7	0	0.0%
Destrehan	12	20	23	24	28	16	57.1%
East Jefferson	24	22	18	15	18	-6	-33.3%
East Saint John	9	10	7	6	8	-1	-12.5%
F.T. Nicholls	13	14	13	18	23	10	43.5%
Fisher Middle	2	4	10	5	2	0	0.0%
Fontainebleau	1	0	4	0	7	6	85.7%
Fredrick A. Douglass Senior	17	7	12	8	3	-14	-466.7%
George W. Carver Sr	12	15	13	16	17	5	29.4%
Grace King	29	23	20	28	25	-4	-16.0%
Hahnville	8	8	17	14	20	12	60.0%
Immaculata	4	2	4	5	1	-3	-300.0%
J.S. Clark Senior	16	18	11	18	21	5	23.8%
John Ehret	42	48	39	59	53	11	20.8%
John F. Kennedy Senior	40	44	35	48	49	9	18.4%
John McDonogh Senior	38	21	42	42	47	9	19.1%
L.B. Landry	6	9	19	9	21	15	71.4%
L.E. Rabouin Voc	14	22	32	21	30	16	53.3%
L.W. Higgins	30	21	41	34	32	2	6.3%
Marion Abramson	37	20	21	31	74	37	50.0%
Mc Donogh 35 Senior	27	19	55	30	18	-9	-50.0%
McMain Magnet	23	11	5	4	5	-18	-360.0%
Northshore	4	10	6	9	10	6	60.0%
O.Perry Walker Senior	23	22	28	24	39	16	41.0%
Pearl River	5	2	5	8	4	-1	-25.0%
Riverdale	18	17	15	15	21	3	14.3%
Salmen	9	11	7	8	5	-4	-80.0%
Sarah Reed	20	20	25	23	32	12	37.5%
Slidell	15	15	16	18	23	8	34.8%
St. Augustine	2	2	5	6	5	3	60.0%
St. Mary's Academy	5	1	94	8	4	-1	-25.0%
Terrebonne	3	1	4	5	5	2	40.0%
Walter L. Cohen	16	14	13	20	16	0	0.0%
Warren Easton Fundamental	40	33	48	40	27	-13	-48.1%
West Jefferson	41	35	35	34	59	18	30.5%
West St. John	2	1	28	0	5	3	60.0%
Xavier Preparatory	1	5	3	4	1	0	0.0%
Unknown	383	336	274	151	308	-75	-24.4%
G.E.D.	206	187	250	249	242	36	14.9%
Non-High School Grads	31	29	42	30	120	89	74.2%
Other	196	167	81	254	64	-132	-206.3%
TOTAL First Time Freshman	1,546	1,350	1,533	3,476	1,648	102	6.2%

Spring Enrollment History 2000-2004 by Zip Code (zip code order)

College Wide							Number Change	% Change
	Zip Code	2000	2001	2002	2003	2004	2000 to 2004	2000 to 2004
Metairie S of I-10	70001	478	484	459	502	557	79	14.2%
Metairie	70002	190	182	208	232	246	56	22.8%
West Metairie	70003	441	433	434	488	517	76	14.7%
Old Metairie-Bucktown	70005	232	229	211	229	256	24	9.4%
Metairie Clearview N of I-10	70006	193	190	190	172	217	24	11.1%
Belle Chasse	70037	155	125	130	152	188	33	17.6%
Chalmette	70043	105	130	127	132	158	53	33.5%
Destrehan	70047	91	91	128	125	125	34	27.2%
Gretna	70053	168	149	181	195	217	49	22.6%
Gretna/S of Whitney	70056	488	495	536	606	603	115	19.1%
Harvey	70058	486	475	564	672	717	231	32.2%
South Kenner	70062	151	156	158	191	209	58	27.8%
North Kenner	70065	587	620	618	687	732	145	19.8%
LaPlace	70068	154	178	187	245	267	113	42.3%
Marrero	70072	654	592	695	748	876	222	25.3%
Westwego	70094	293	265	319	367	406	113	27.8%
Algiers	70114	381	403	399	443	498	117	23.5%
Uptown	70115	303	326	343	338	317	14	4.4%
French Quarter-Marigny	70116	123	142	126	133	148	25	16.9%
Bywater/ Lower 9th Ward	70117	525	514	564	634	636	111	17.5%
Carrollton/Riverbend	70118	293	316	337	326	374	81	21.7%
Mid City	70119	518	503	568	615	636	118	18.6%
N.O. Postal Box Zone	70121	126	143	141	144	147	21	14.3%
Lakefront/Gentilly	70122	540	545	587	629	643	103	16.0%
Harahan-Jefferson	70123	221	228	231	265	276	55	19.9%
Lakefront/Lakeview	70124	204	201	195	229	242	38	15.7%
Broadmoor	70125	157	192	172	201	212	55	25.9%
N.O. East Crowder	70126	542	539	546	629	606	64	10.6%
N.O. East Crowder to Wright Rd	70127	358	356	385	448	464	106	22.8%
N.O. East Wright Rd to I-510	70128	268	256	264	307	359	91	25.3%
N.O. East Past I-510	70129	179	175	186	216	233	54	23.2%
N.O. CBD Lower Garden District	70130	124	107	122	144	149	25	16.8%
Lower Coast Algiers	70131	346	368	349	390	422	76	18.0%
Slidell	70458	294	301	316	402	396	102	25.8%
Slidell	70460	172	174	185	239	275	103	37.5%
Slidell	70461	182	191	224	271	279	97	34.8%
Subtotal		10,722	10,774	11,385	12,746	13,603	2,881	21.2%
Other Louisiana		1,863	1,776	1,985	2,222	2,753	890	32.3%
Total Louisiana		12,585	12,550	13,370	14,968	16,356	3,771	23.1%
Out-of-State/Unknown		317	126	100	404	86	-231	-268.6%
Total		12,902	12,676	13,470	15,372	16,442	3,540	21.5%

City Park							Number Change	% Change
	Zip Code	2000	2001	2002	2003	2004	2000 to 2004	2000 to 2004
Metairie S of I-10	70001	441	456	434	463	514	73	14.2%
Metairie	70002	175	176	202	223	236	61	25.8%
West Metairie	70003	430	416	408	458	466	36	7.7%
Old Metairie-Bucktown	70005	220	220	205	220	241	21	8.7%
Metairie Clearview N of I-10	70006	179	182	184	162	205	26	12.7%
Belle Chasse	70037	25	15	29	36	40	15	37.5%
Chalmette	70043	83	104	105	107	128	45	35.2%
Destrehan	70047	87	86	124	118	118	31	26.3%
Gretna	70053	58	43	44	52	71	13	18.3%
Gretna/S of Whitney	70056	185	176	186	188	196	11	5.6%
Harvey	70058	207	167	187	208	211	4	1.9%
South Kenner	70062	143	149	152	181	198	55	27.8%
North Kenner	70065	558	588	595	663	687	129	18.8%
LaPlace	70068	144	168	173	231	248	104	41.9%
Marrero	70072	206	166	203	208	222	16	7.2%
Westwego	70094	121	119	134	140	156	35	22.4%
Algiers	70114	131	118	111	121	132	1	0.8%
Uptown	70115	286	310	322	307	285	-1	-0.4%
French Quarter-Marigny	70116	118	135	121	128	141	23	16.3%
Bywater/ Lower 9th Ward	70117	507	492	545	618	609	102	16.7%
Carrollton/Riverbend	70118	277	308	328	308	344	67	19.5%
Mid City	70119	508	486	552	592	606	98	16.2%
N.O. Postal Box Zone	70121	123	138	133	136	135	12	8.9%
Lakefront/Gentilly	70122	521	532	569	601	603	82	13.6%
Harahan-Jefferson	70123	205	216	208	244	256	51	19.9%
Lakefront/Lakeview	70124	194	187	180	215	222	28	12.6%
Broadmoor	70125	150	188	165	196	203	53	26.1%
N.O. East Crowder	70126	525	519	527	612	574	49	8.5%
N.O. East Crowder to Wright Rd	70127	345	348	372	430	441	96	21.8%
N.O. East Wright Rd to I-510	70128	256	242	247	292	338	82	24.3%
N.O. East Past I-510	70129	174	172	178	207	220	46	20.9%
N.O. CBD Lower Garden District	70130	118	101	113	133	136	18	13.2%
Lower Coast Algiers	70131	105	114	94	131	276	171	62.0%
Slidell	70458	279	285	299	120	72	-207	-287.5%
Slidell	70460	163	162	178	65	57	-106	-186.0%
Slidell	70461	172	183	210	93	74	-98	-132.4%
Subtotal		8,419	8,467	8,817	9,207	9,661	1,242	12.9%
Other Louisiana		1,587	1,522	1,700	1,748	1,583	-4	-0.3%
Total Louisiana		10,006	9,989	10,517	10,955	11,244	1,238	11.0%
Out-of-State/Unknown		283	111	99	109	62	-221	-356.5%
Total		10,289	10,100	10,616	11,064	11,306	1,017	9.0%

West Bank							Number Change	% Change
	Zip Code	2000	2001	2002	2003	2004	2000 to 2004	2000 to 2004
Metairie S of I-10	70001	12	6	3	8	4	-8	-200.0%
Metairie	70002	5	1	0	1	1	-4	-400.0%
West Metairie	70003	1	1	3	1	4	3	75.0%
Old Metairie-Bucktown	70005	1	1	0	1	0	-1	0.0%
Metairie Clearview N of I-10	70006	3	3	1	1	1	-2	-200.0%
Belle Chasse	70037	125	107	98	105	139	14	10.1%
Chalmette	70043	2	1	2	2	5	3	60.0%
Destrehan	70047	2	1	1	1	1	-1	-100.0%
Gretna	70053	108	102	132	135	136	28	20.6%
Gretna/S of Whitney	70056	285	290	331	397	380	95	25.0%
Harvey	70058	267	293	361	439	477	210	44.0%
South Kenner	70062	1	0	0	2	3	2	66.7%
North Kenner	70065	4	0	1	3	6	2	33.3%
Jean Lafitte	70067	23	35	28	34	7	-16	-228.6%
LaPlace	70068	1	0	2	3	3	2	66.7%
Marrero	70072	420	400	461	502	607	187	30.8%
Plaquemines	70083	22	1	27	23	30	8	26.7%
Westwego	70094	164	134	172	217	229	65	28.4%
Algiers	70114	238	274	278	316	351	113	32.2%
Uptown	70115	10	9	7	10	8	-2	-25.0%
French Quarter-Marigny	70116	3	2	1	2	4	1	25.0%
Bywater/ Lower 9th Ward	70117	7	7	6	5	13	6	46.2%
Carrollton/Riverbend	70118	10	5	5	5	11	1	9.1%
Mid City	70119	5	3	5	9	8	3	37.5%
N.O. Postal Box Zone	70121	0	0	3	2	3	3	100.0%
Lakefront/Gentilly	70122	4	3	6	9	13	9	69.2%
Harahan-Jefferson	70123	2	2	5	6	4	2	50.0%
Lakefront/Lakeview	70124	4	2	0	1	2	-2	-100.0%
Broadmoor	70125	7	2	2	2	4	-3	-75.0%
N.O. East Crowder	70126	3	7	6	9	14	11	78.6%
N.O. East Crowder to Wright Rd	70127	2	2	1	9	6	4	66.7%
N.O. East Wright Rd to I-510	70128	4	4	2	3	5	1	20.0%
N.O. East Past I-510	70129	4	1	3	1	2	-2	-100.0%
N.O. CBD Lower Garden District	70130	4	1	4	7	8	4	50.0%
Lower Coast Algiers	70131	234	245	238	249	276	42	15.2%
Slidell	70458	0	1	1	3	1	1	100.0%
Slidell	70460	2	2	0	0	1	-1	-100.0%
Slidell	70461	1	0	1	2	0	-1	0.0%
Subtotal		1,990	1,948	2,197	2,525	2,767	777	28.1%
Other Louisiana		132	149	139	187	255	123	48.2%
Total Louisiana		2,122	2,097	2,336	2,712	3,022	900	29.8%
Out-of-State/Unknown		30	14	0	16	9	-21	-233.3%
Total		2,152	2,111	2,336	2,728	3,031	879	29.0%

Charity School of Nursing							Number Change	% Change
	Zip Code	2000	2001	2002	2003	2004	2000 to 2004	2000 to 2004
Metairie S of I-10	70001	25	22	22	31	39	14	35.9%
Metairie	70002	10	5	6	8	9	-1	-11.1%
West Metairie	70003	10	16	23	25	45	35	77.8%
Old Metairie-Bucktown	70005	11	8	6	8	14	3	21.4%
Metairie Clearview N of I-10	70006	11	5	5	9	10	-1	-10.0%
Belle Chasse	70037	5	3	3	11	9	4	44.4%
Chalmette	70043	20	25	20	22	24	4	16.7%
Destrehan	70047	2	4	3	6	6	4	66.7%
Gretna	70053	2	4	5	7	10	8	80.0%
Gretna/S of Whitney	70056	18	26	19	21	27	9	33.3%
Harvey	70058	12	15	16	25	29	17	58.6%
South Kenner	70062	7	7	6	7	7	0	0.0%
North Kenner	70065	25	32	22	20	38	13	34.2%
LaPlace	70068	9	10	12	11	15	6	40.0%
Marrero	70072	28	26	31	38	45	17	37.8%
Westwego	70094	8	12	13	10	20	12	60.0%
Algiers	70114	12	11	10	6	15	3	20.0%
Uptown	70115	7	7	14	21	24	17	70.8%
French Quarter-Marigny	70116	2	5	4	3	3	1	33.3%
Bywater/ Lower 9th Ward	70117	11	15	13	9	13	2	15.4%
Carrollton/Riverbend	70118	6	3	4	13	19	13	68.4%
Mid City	70119	5	14	11	13	22	17	77.3%
N.O. Postal Box Zone	70121	3	5	5	6	9	6	66.7%
Lakefront/Gentilly	70122	15	10	12	17	25	10	40.0%
Harahan-Jefferson	70123	14	10	18	15	15	1	6.7%
Lakefront/Lakeview	70124	6	12	15	13	18	12	66.7%
Broadmoor	70125	0	2	5	3	5	5	100.0%
N.O. East Crowder	70126	14	13	13	8	17	3	17.6%
N.O. East Crowder to Wright Rd	70127	11	6	12	8	15	4	26.7%
N.O. East Wright Rd to I-510	70128	8	10	15	12	15	7	46.7%
N.O. East Past I-510	70129	1	2	5	6	9	8	88.9%
N.O. CBD Lower Garden District	70130	3	5	5	4	5	2	40.0%
Lower Coast Algiers	70131	7	9	17	10	12	5	41.7%
Slidell	70458	15	15	16	27	27	12	44.4%
Slidell	70460	7	10	7	12	16	9	56.3%
Slidell	70461	9	8	13	16	17	8	47.1%
Subtotal		359	392	426	481	648	289	44.6%
Other Louisiana		98	72	91	119	136	38	27.9%
Total Louisiana		457	464	517	600	784	327	41.7%
Out-of-State/Unknown		4	1	1	2	4	0	0.0%
Total		461	465	518	602	788	327	41.5%

Slidell/Northshore							Number Change	% Change
	Zip Code	2000	2001	2002	2003	2004	2000 to 2004	2000 to 2004
Metairie S of I-10	70001							
Metairie	70002							
West Metairie	70003				1	2	1	50.0%
Old Metairie-Bucktown	70005				0	1	1	100.0%
Metairie Clearview N of I-10	70006				0	1	1	100.0%
Belle Chasse	70037							
Chalmette	70043				1	1	0	0.0%
Destrehan	70047							
Gretna	70053				1	0	-1	0.0%
Gretna/S of Whitney	70056							
Harvey	70058							
South Kenner	70062				1	1	0	0.0%
North Kenner	70065				6	1	-5	-500.0%
LaPlace	70068				0	1	1	100.0%
Marrero	70072				0	2	2	100.0%
Westwego	70094				0	1	1	100.0%
Algiers	70114							
Uptown	70115							
French Quarter-Marigny	70116							
Bywater/ Lower 9th Ward	70117				2	1	-1	-100.0%
Carrollton/Riverbend	70118							
Mid City	70119				1	0	-1	0.0%
N.O. Postal Box Zone	70121							
Lakefront/Gentilly	70122				2	2	0	0.0%
Harahan-Jefferson	70123				0	1	1	100.0%
Lakefront/Lakeview	70124							
Broadmoor	70125							
N.O. East Crowder	70126				0	1	1	100.0%
N.O. East Crowder to Wright Rd	70127				1	2	1	50.0%
N.O. East Wright Rd to I-510	70128				0	1	1	100.0%
N.O. East Past I-510	70129				2	2	0	0.0%
N.O. CBD Lower Garden District	70130							
Lower Coast Algiers	70131							
St. Tammany	70420				19	40	21	52.5%
Washington	70427				11	21	10	47.6%
Covington	70433				55	97	42	43.3%
Covington	70435				28	31	3	9.7%
St. Tammany	70445				42	61	19	31.1%
St. Tammany	70448				31	23	-8	-34.8%
St. Tammany	70452				59	69	10	14.5%
Slidell	70458				252	296	44	14.9%
Slidell	70460				162	201	39	19.4%
Slidell	70461				160	188	28	14.9%
St. Tammany	70471				25	47	22	46.8%
Subtotal					862	1,095	233	21.3%
Other Louisiana					102	211	109	51.7%
Total Louisiana					964	1,306	342	26.2%
Out-of-State/Unknown					14	11	-3	-27.3%
Total					978	1,317	339	25.7%